

(E) HYDRANTS (THREE)
 CONTRACTOR SHALL VERIFY THE WATER
 SUPPLY FOR THIS HYDRANTS. THE SUPPLY
 SHALL BE FROM IRRIGATION PIPE.
 IN CASE THE SUPPLY IS FROM DOMESTIC
 WATER PIPE THAN SHALL BE DISCONNECTED &
 CONNECT TO (E) 6" IRR. PIPE ADJACENT TO
 HYDRANTS.

(N) 8" PIPE TO BE CONNECTED
 TO (E) 8" IRR. & TO (E) HYDRANT
 BEFORE 6" ISOLATING VALVE NEXT TO
 HYDRANT

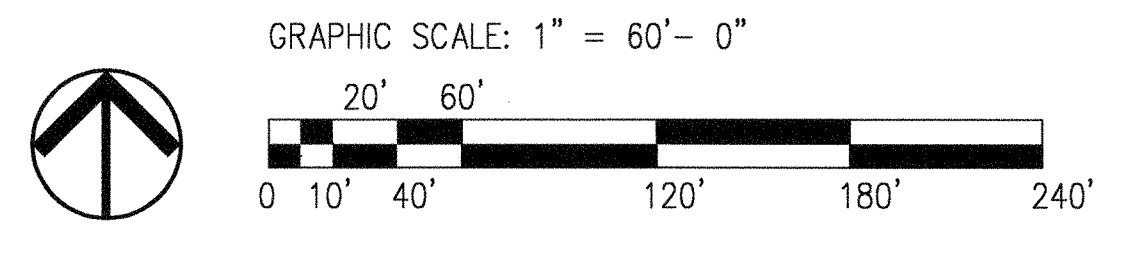
(E) 6" DOMESTIC COLD WATER
 SUPPLY TO HYDRANT TO BE DISCONNECT & CAPPED.
 (N) 6" PIPE CONNECTED TO (E) 6" IRR & TO (E) FIRE HYDRANT VISITOR / STAFF PARKING
 BEFORE 6" ISOLATING VALVE NEXT TO HYDRANT.

(E) 6" DOMESTIC COLD
 WATER SUPPLY TO HYDRANT
 TO BE DISCONNECTED & CAPPED U/G.

LIST OF MISCELLANEOUS BUILDINGS

1. AQMD TRAILER
2. STORAGE CONTAINER
3. TRANSFORMER ROOM
4. SWITCH ROOM
5. STORAGE SHED
6. STORAGE SHED
7. STORAGE SHED
8. STORAGE
9. STORAGE CONTAINER
10. STORAGE CONTAINER
11. STORAGE CONTAINER
12. PRESS BOX
13. STORAGE - FIELD EQUIPMENT
14. STORAGE
15. STORAGE CONTAINER

1 SITE PLAN
 P-3ps 1/60' = 1'-0"



2X10 FT. STAIR W-109

C:\PACKAGE\2\VP-3\15.dwg Tue Mar 28 10:58:33 2001 HRL2 file drive wood

SEQUENCE OF OPERATIONS

1. NORMAL OPERATIONS: (ONE TANK SUPPLIES IRRIGATION, ONE TANK SUPPLIES DOMESTIC COLD WATER)

WATER IS SUPPLIED FROM TWO WELLS.
 VALVES ①, ② & ③ ARE NORMALLY OPEN (N.O.)
 VALVES ④, ⑤ & ⑥ ARE NORMALLY CLOSED (C.O.)
 NEW TRIPLEX PUMPING STATION IS SUPPLING CHLORINATED WATER TO EXISTING DOMESTIC WATER NETWORK

(THE EXISTING HYDRANTS CONNECTED TO DOMESTIC NETWORK SHALL BE DISCONNECTED AND NEW PIPES AS MARKED ON DRAWING SHALL SUPPLY THEM FROM EXISTING IRRIGATION SYSTEM)

THE EXISTING PUMPING SYSTEM INCLUDING FIRE PUMP WILL SUPPLY ONLY THE IRRIGATION SYSTEM. THIS WATER WILL BE UNCHLORINATED AND SHALL SUPPLY ALL HYDRANTS ON THE SITE.

2. EMERGENCY FIRE OPERATION. (BOTH TANKS SUPPLIES IRRIGATION SYSTEM)

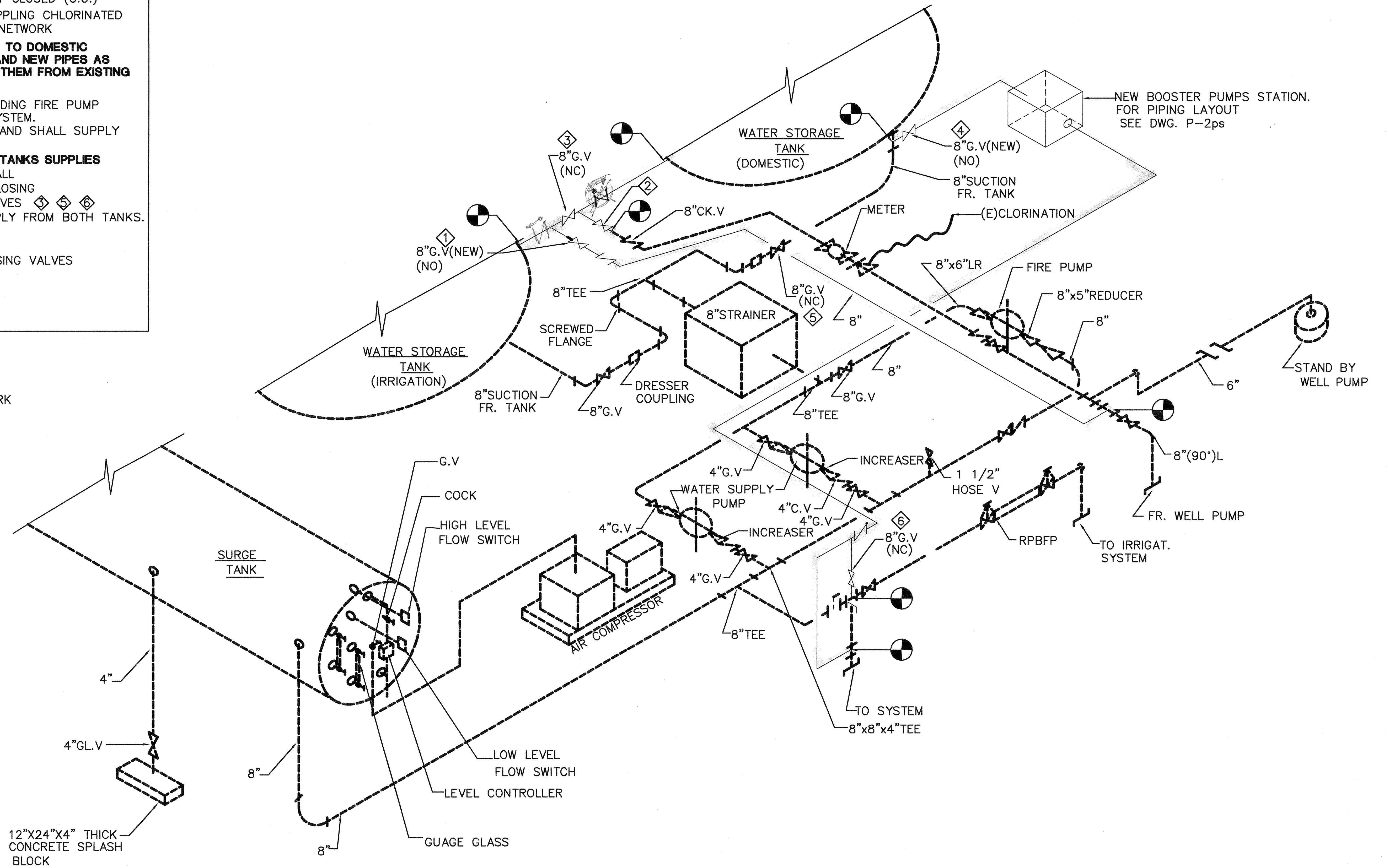
THE SYSTEM SHALL GO BACK TO OLD DISTRIBUTION BY CLOSING VALVES ① & ② AND OPEN VALVES ③, ④ & ⑤. THE FIRE PUMP WILL GET WATER SUPPLY FROM BOTH TANKS.

3. MAINTENANCE OPERATION:

EACH TANK CAN BE ISOLATED BY CLOSING VALVES ① & ③ OR VALVES ② & ④

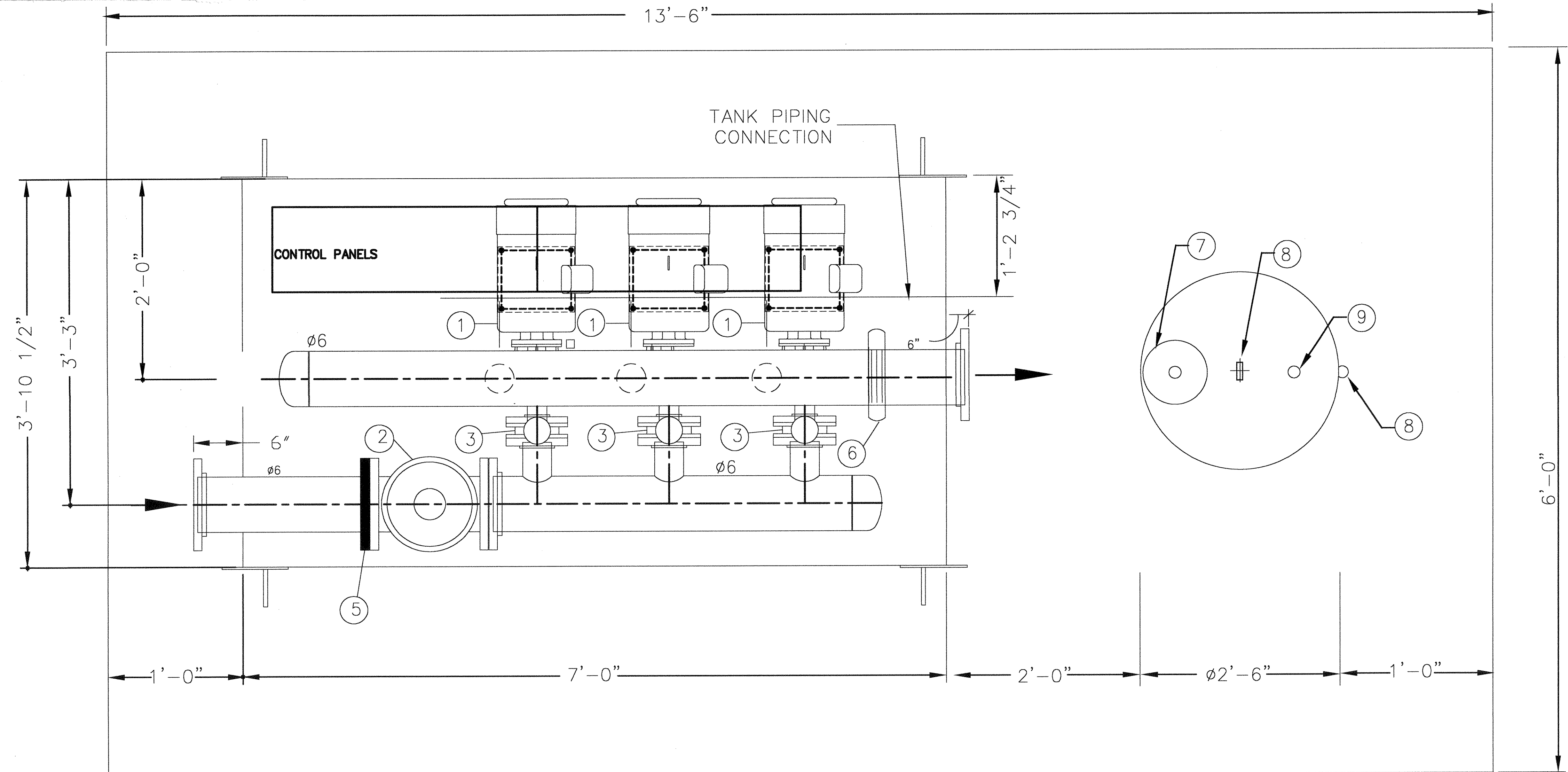
LEGEND

--- EXISTING
 --- NEW WORK



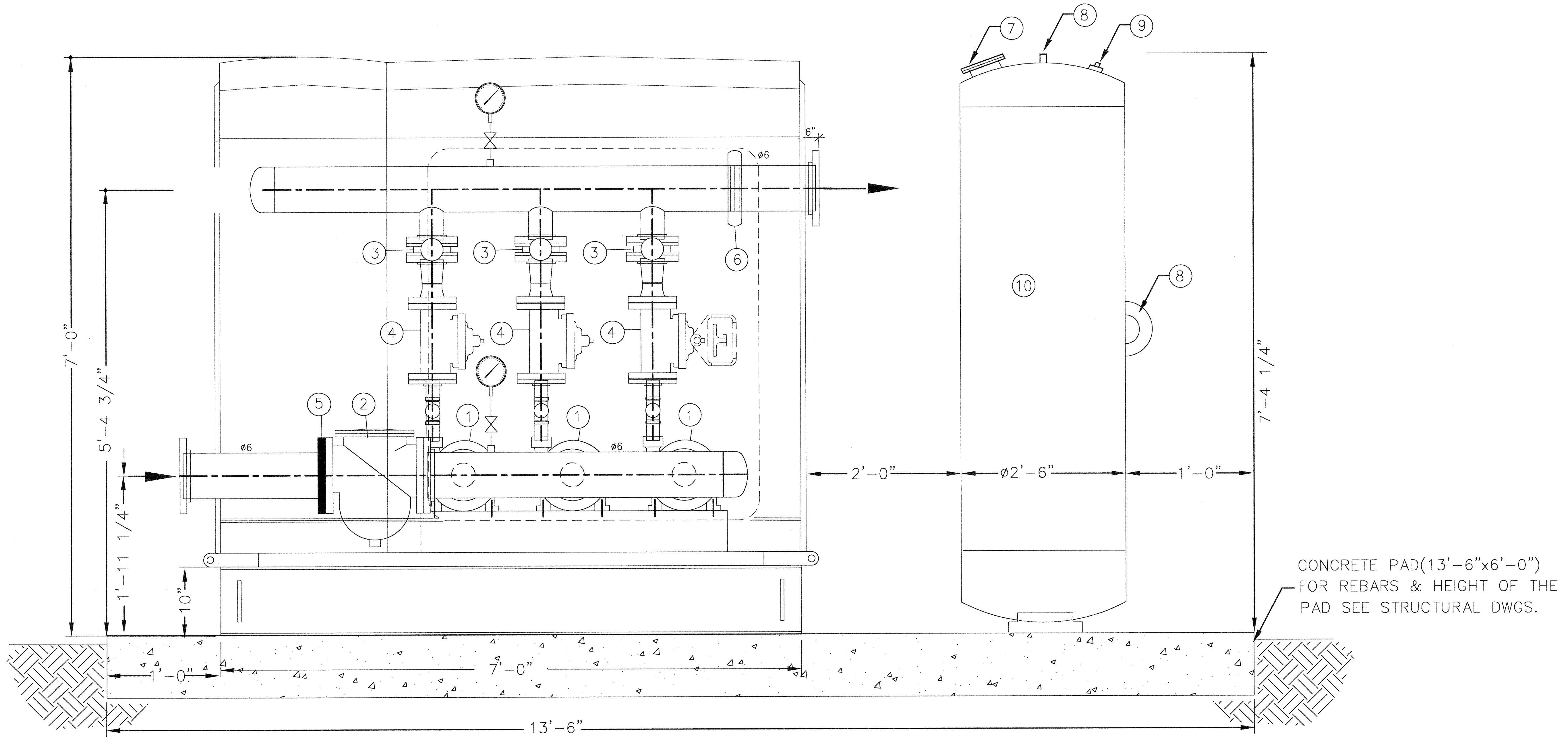
PUMP STATION ISOMETRIC DIAGRAM

NO SCALE



PLAN VIEW

KEY LEGEND	
KEY	DESCRIPTION
①	PEERLESS C815 GM 15 HP 3500 RPM
②	6" APE #265 BASKET STRAINER
③	3" LUG 8' FLY VALVE-LEVER OPER.
④	2 1/2" CLAVAL
⑤	6" VICTAULIC FLANGE #741
⑥	6" VICTAULIC COUPLING #75
⑦	1 1/2" INLET
⑧	LIFTING RING
⑨	CHARGING VALVE
⑩	ASME BLADDER EXPANSION TANK



FRONT ELEVATION

CONCRETE PAD(13'-6"x6'-0")
FOR REBARS & HEIGHT OF THE
PAD SEE STRUCTURAL DWGS.

\PACKAGE\2\dwg\pump.dwg Tue Mar 28 10:51:41 2000 HPSJZ file save word