

OXNARD UNION HIGH SCHOOL DISTRICT ADOLFO CAMARILLO HIGH SCHOOL SITE SECURITY IMPROVEMENTS

4660 MISSION OAKS BLVD, CAMARILLO, CA 93012

GENERAL NOTES

1. ANY DIFFERENCE BETWEEN THE EXISTING CONSTRUCTION AS OBSERVED IN THE FIELD AND AS SHOWN ON THE DRAWINGS SHALL BE REPORTED TO THE ARCHITECT BEFORE PROCEEDING WITH THE WORK.
2. THE CONTRACTOR SHALL VERIFY ALL DIMENSIONS PRIOR TO STARTING WORK THE ARCHITECT SHALL BE NOTIFIED OF ANY DISCREPANCIES OR INCONSISTENCIES. THE CONTRACTOR IS RESPONSIBLE FOR CHECKING AND COORDINATING ALL DIMENSIONS. REVIEW BUILDING LAYOUT WITH ARCHITECT BEFORE STARTING ANY FOOTING EXCAVATION OR FOUNDATION WORK.
3. THE CONTRACTOR IS RESPONSIBLE FOR VERIFYING ACTUAL SITE CONDITIONS REGARDLESS OF INFORMATION SHOWN ON THE DRAWINGS. DISCREPANCIES BETWEEN CONDITIONS SHOWN OR NOT SHOWN ON DRAWINGS AND ACTUAL EXISTING VISIBLE, DISCERNABLE CONDITIONS AT THE JOB SITE, DO NOT RELIEVE THE CONTRACTOR FROM PERFORMING THE WORK OF THIS CONTRACT IN FULL CONFORMANCE WITH THE CONTRACT DOCUMENTS.
4. IT SHALL BE THE RESPONSIBILITY OF THE GENERAL CONTRACTOR TO INSURE THAT ALL APPLICABLE SAFETY LAWS ARE STRICTLY ENFORCED AND TO MAINTAIN A SAFE CONSTRUCTION PROJECT.
5. BIDDERS MUST VISIT THE BUILDING SITE AND FAMILIARIZE THEMSELVES WITH EXISTING CONDITIONS. THE INTENT OF THESE DRAWINGS AND SPECIFICATIONS IS TO PROVIDE A PROJECT COMPLETE IN EVERY DETAIL AND READY FOR OCCUPANCY. DISCREPANCIES OR DELETIONS MUST BE BROUGHT TO THE ATTENTION OF THE ARCHITECT BEFORE THE BID DATE FOR CORRECTION.
6. ANY DAMAGE DONE TO THE EXISTING SITE OR FACILITIES DURING THE COURSE OF THE WORK SHALL BE REPAIRED OR REPLACED BY THE CONTRACTOR AT HIS OWN EXPENSE WITH NO ADDITIONAL COST TO THE DISTRICT.
7. BIDDERS SHALL ASSUME THAT ALL ITEMS INDICATED ON THE DRAWINGS ARE NEW CONSTRUCTION IF NOT INDICATED WITH AN (N) OR 'NEW', UNLESS INDICATED AS 'E1' OR 'EXISTING'.
8. ALL NEW WORK SHALL MATCH EXISTING IN KEEPING WITH GOOD CONSTRUCTION PRACTICE. IT IS THE INTENT OF THESE DOCUMENTS THAT THE PORTION OF THE SURFACE WHICH HAS BEEN INSTALLED, REPAIRED OR REPLACED, SHALL MATCH THE EXISTING ADJACENT SURFACES, AND THAT THE NEW WORK WILL NOT BE DISCERNABLE FROM THE EXISTING.
9. WHERE MINIMUM DIMENSIONS ARE INDICATED, EXISTING DIMENSIONS IN EXCESS OF THAT SHOWN MAY BE RETAINED UNLESS OTHERWISE NOTED.
10. CONTRACTOR SHALL NOTIFY THE ARCHITECT IMMEDIATELY OF ALL OMISSIONS AND CONFLICTS BETWEEN THE ELEMENTS OF THE CONTRACT DOCUMENTS BEFORE PROCEEDING WITH THE WORK INVOLVED.
11. CONTRACTOR SHALL PROTECT ALL EXISTING STRUCTURAL, MECHANICAL, PLUMBING, ELECTRICAL, LANDSCAPE SITE FEATURES TO REMAIN. ALL DAMAGED WORK SHALL BE REPLACED WITH THE SAME MATERIALS, INCLUDING MATCHING THE EXISTING COLORS AND TEXTURES BY THE CONTRACTOR AT HIS OWN EXPENSE WITH NO ADDITIONAL COST TO THE DISTRICT.
12. ALL WORK SHALL CONFORM TO TITLE 24, CALIFORNIA CODE OF REGULATIONS (CCR).

GENERAL REQUIREMENTS:

1. A DSA CERTIFIED PROJECT INSPECTOR EMPLOYED BY THE DISTRICT (OWNER) AND APPROVED BY THE DIVISION OF THE STATE ARCHITECT SHALL PROVIDE CONTINUOUS INSPECTION OF THE WORK. THE DUTIES OF THE INSPECTOR ARE DEFINED IN SECTION 4-342, CALIFORNIA BUILDING STANDARDS ADMINISTRATIVE CODE (PART 1, TITLE 24, CCR).
2. A DSA CERTIFIED INSPECTOR WITH CLASS 3 CERTIFICATION IS REQUIRED FOR THIS PROJECT.

APPLICABLE CODES

CONSTRUCTION SHALL COMPLY WITH THE FOLLOWING:

PART 1	2016 CALIFORNIA ADMINISTRATIVE CODE (CAC), TITLE 24 C.C.R.
PART 2	2016 CALIFORNIA BUILDING CODE (CBC), TITLE 24 C.C.R.
PART 3	2016 CALIFORNIA ELECTRICAL CODE (CEC), TITLE 24 C.C.R.
PART 4	2016 CALIFORNIA MECHANICAL CODE (CMC), TITLE 24 C.C.R.
PART 5	2016 CALIFORNIA PLUMBING CODE (CPC), TITLE 24 C.C.R.
PART 6	2016 CALIFORNIA ENERGY CODE, TITLE 24 C.C.R.
PART 8	2016 CALIFORNIA HISTORICAL BUILDING CODE, TITLE 24 C.C.R.
PART 9	2016 CALIFORNIA FIRE CODE (CFC), TITLE 24, C.C.R.
PART 10	2016 CALIFORNIA GREEN BUILDING CODE (CEBC), TITLE 24, C.C.R.
PART 11	2016 CALIFORNIA EXISTING BUILDING STANDARDS CODE (CALGREEN), TITLE 24, C.C.R.
PART 12	2016 CALIFORNIA REFERENCED STANDARDS CODE, TITLE 24, C.C.R.

PARTIAL LIST OF APPLICABLE STANDARDS:

NFPA 13 AUTOMATIC SPRINKLER SYSTEMS (CALIFORNIA AMENDED)	2016 EDITION
NFPA 14 STANDPIPE SYSTEMS (CALIFORNIA AMENDED)	2013 EDITION
NFPA 17 DRY CHEMICAL EXTINGUISHING SYSTEMS	2013 EDITION
NFPA 17A WET CHEMICAL EXTINGUISHING SYSTEMS	2013 EDITION
NFPA 20 STATIONARY PUMPS	2016 EDITION
NFPA 24 PRIVATE FIRE SERVICE MAINS (CALIFORNIA AMENDED)	2016 EDITION
NFPA 72 NATIONAL FIRE ALARM & SIGNALING CODE (CA. AMENDED)	2016 EDITION
NFPA 80 FIRE DOOR AND OTHER OPENING PROTECTIVES	2016 EDITION
NFPA 253 CRITICAL RADIANT FLUX OF FLOOR COVERING SYSTEMS	2015 EDITION
NFPA 2001 CLEAN AGENT FIRE EXTINGUISHING SYSTEM (CA. AMENDED)	2015 EDITION

NATIONAL REFERENCE STANDARDS:
 AISI SEISMIC PROVISIONS FOR STRUCTURAL STEEL BUILDINGS (ANSI/AISC 341-10)
 AISI SPECIFICATION FOR STRUCTURAL STEEL BUILDINGS (ANSI/AISC 360-10)
 NATIONAL DESIGN SPECIFICATION (NDS) FOR WOOD CONSTRUCTION (ANSI/AIA NDS 2015)
 ACI-318-14 BUILDING CODE REQUIREMENTS FOR STRUCTURAL CONCRETE

STATE BUILDING CODE

(Part 1, Title 24, C.C.R.)

"The intent of these drawings and specification is that the work of the alteration, rehabilitation or reconstruction is to be in accordance with Title 24, California Code of Regulations. Should any existing conditions such as deterioration or noncomplying construction be discovered which is not covered by the contract documents wherein the finished work will not comply with Title 24, California Code of Regulations, a change order, or a separate set of plans and specifications, detailing and specifying the required work shall be submitted to and approved by the Division of the State Architect before proceeding with the work."

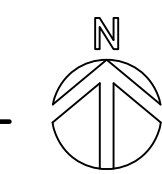
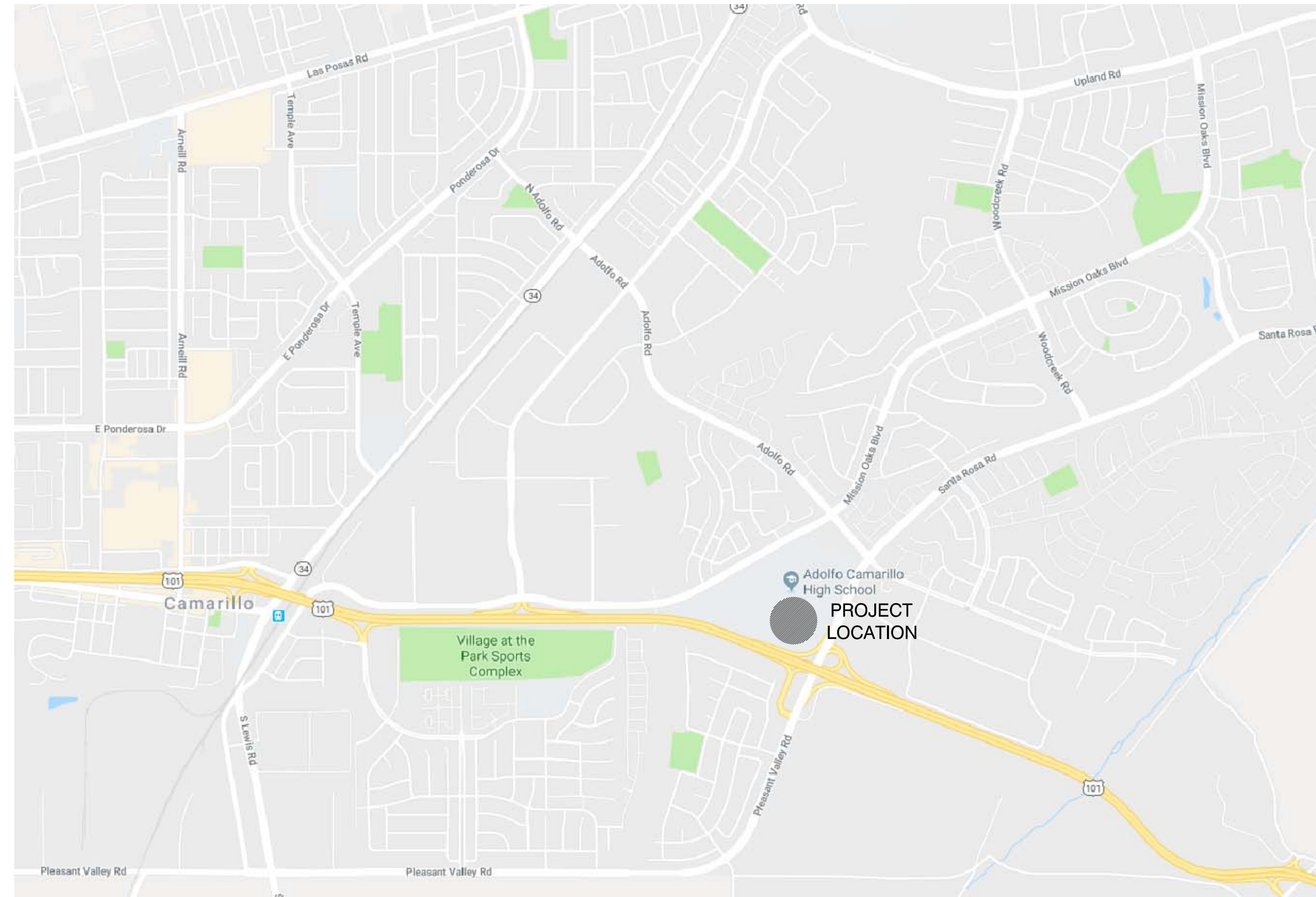
Changes to the approved drawings and specifications shall be made by an addenda or a construction change document (CCD) approved by the Division of the State Architect, as required by Section 4-338, Part 1, Title 24, CCR.

ABBREVIATIONS

ABV ABOVE	ADU ABOVE FINISHED FLOOR	A/C AIR CONDITIONING	ALT ALTERNATE	ALUM ANCHOR BOLT	AND ANGLE	ANOD ANODIZED	APPROX APPROXIMATE	ARCH ARCHITECT (URAL)	ASPH ASPHALT	AC ASPHALT CONCRETE	AUTO AUTOMATIC	BM BEAM	BLKG BLOCKING	BD BOARD	BOT BOTTOM	BN BOUNDARY NAILING	BLDG BUILDING	BUR BUILT UP ROOFING	CAB CABINET	CPT CARPET (ED)	CLG CEILING	CEM CEMENT	CIR CENTERLINE	CER CERAMIC	CIR CIRCLE	COL COLUMN	CONC CONCRETE	CMU CONCRETE MASONRY UNIT	CONN CONNECTION	CONST CONSTRUCTION	CJ CONSTRUCTION JOINT	CONT CONTINUOUS/CONTINUE	C/SK COUNTER SINK	DEM DEMOLISH / DEMOLITION	DET DETAIL	DIAG DIAGONAL	DIA DIAMETER	DIM DIMENSION	DIV DIVISION	DR DOOR	DBL DOUBLE	DN DOWN	DWG DRAWING	DF DRINKING FOUNTAIN/ DOUGLAS FIR	EA EACH	E EAST	ELEC ELECTRIC (AL)	ELEV ELEVATOR / ELEVATION	ENCL ENCLOSE (URE)	EQ EQUAL	EQUIP EQUIPMENT	EXCA EXCAVATE	EXH EXHAUST	EXP EXPANSION	EJ EXPANSION JOINT	FCO FACE OF CONCRETE	FOF FACE OF FINISH	FOM FACE OF MASONRY	FOS FACE OF STUD	FN FIELD NAILING	FIN FINISH (ED)	FIN FLR FINISH FLOOR	FG FINISH GRADE	FXT FIXTURE	FLASH FLASHING	FHMS FLATHEAD MACHINE SCREW	FHWS FLATHEAD WOOD SCREW	FLR FLOOR (ING)	FLUO FLUORESCENT	FT FOOT OR FEET	FTG FOOTING	FD FOUNDATION	FURR FURRING	GA GAGE / GAUGE	GALV GALVANIZED	GRND GROUND	GYP GYPSUM	RESIL RESILIENT	RET RETAINING	R/A RETURN AIR	REV REVISION(S) / REVISED	RH RIGHT HAND	RD ROOF DRAIN	RFG ROOFING	RM ROOM	RO ROUGH OPENING	RHMS ROUND HEAD MACHINE SCREW	RHWS ROUND HEAD WOOD SCREW	SHT SHEET	REF REFERENCE	REFR REFRIGERATOR	REG REGISTER	REINF REINFORCED	REQ'D REQUIRED	RESIL RESILIENT	RET RETAINING	R/A RETURN AIR	REV REVISION(S) / REVISED	RH RIGHT HAND	RD ROOF DRAIN	RFG ROOFING	RM ROOM	RO ROUGH OPENING	RHMS ROUND HEAD MACHINE SCREW	RHWS ROUND HEAD WOOD SCREW	SHT SHEET	SHTG SHEATHING	SMS SHEET METAL SCREW	SHWR SHOWER	SIM SIMILAR	SC SHEET CORE	S SOUTH	SPK SPEAKER	SPEC SPECIFICATION (S)	SQ SQUARE	SS STAINLESS STEEL	STD STANDARD	STL STEEL	STOR STORAGE	STRUC STRUCTURE / STRUCTURAL	SUSP SUSPENDED	SYS SYSTEM	TEL TELEPHONE	TV TELEVISION	THK THICK (NESS)	TP TOP OF PAVEMENT	TS TOP OF STEEL	TW TOP OF WALL	T TOP OF...	TREAD TREAD	TR TUBULAR STEEL	TS TYPICAL	UON UNLESS OTHERWISE NOTED	VERT VERTICAL	VG VERTICAL GRAIN	VNT VINYL COMPOSITION TILE	WCSC WATER CLOSET	WH WATER HEATER	WP WATERPROOF (ING)	WR WATER RESISTANT	WT WEIGHT	W WEST / WOMEN / WIDE	WDW WINDOW	W WITH	WO WITHOUT	WO WOOD	PLAS PLASTIC LAMINATE	PL PLATE	PLYWD PLYWOOD	POC POINT OF CONNECTION	PVC POLYVINYL CHLORIDE	PPF POUNDS PER CUBIC FOOT	PSF POUNDS PER SQUARE FOOT	PT PRESSURE TREATED	RAD RADIUS	REF REFERENCE	REFR REFRIGERATOR	REG REGISTER	REINF REINFORCED	REQ'D REQUIRED	RESIL RESILIENT	RET RETAINING	R/A RETURN AIR	REV REVISION(S) / REVISED	RH RIGHT HAND	RD ROOF DRAIN	RFG ROOFING	RM ROOM	RO ROUGH OPENING	RHMS ROUND HEAD MACHINE SCREW	RHWS ROUND HEAD WOOD SCREW	SHT SHEET	SHTG SHEATHING	SMS SHEET METAL SCREW	SHWR SHOWER	SIM SIMILAR	SC SHEET CORE	S SOUTH	SPK SPEAKER	SPEC SPECIFICATION (S)	SQ SQUARE	SS STAINLESS STEEL	STD STANDARD	STL STEEL	STOR STORAGE	STRUC STRUCTURE / STRUCTURAL	SUSP SUSPENDED	SYS SYSTEM	TEL TELEPHONE	TV TELEVISION	THK THICK (NESS)	TP TOP OF PAVEMENT	TS TOP OF STEEL	TW TOP OF WALL	T TOP OF...	TREAD TREAD	TR TUBULAR STEEL	TS TYPICAL	UON UNLESS OTHERWISE NOTED	VERT VERTICAL	VG VERTICAL GRAIN	VNT VINYL COMPOSITION TILE	WCSC WATER CLOSET	WH WATER HEATER	WP WATERPROOF (ING)	WR WATER RESISTANT	WT WEIGHT	W WEST / WOMEN / WIDE	WDW WINDOW	W WITH	WO WITHOUT	WO WOOD
-----------	--------------------------	----------------------	---------------	------------------	-----------	---------------	--------------------	-----------------------	--------------	---------------------	----------------	---------	---------------	----------	------------	---------------------	---------------	----------------------	-------------	-----------------	-------------	------------	----------------	-------------	------------	------------	---------------	---------------------------	-----------------	--------------------	-----------------------	--------------------------	-------------------	---------------------------	------------	---------------	--------------	---------------	--------------	---------	------------	---------	-------------	-----------------------------------	---------	--------	--------------------	---------------------------	--------------------	----------	-----------------	---------------	-------------	---------------	--------------------	----------------------	--------------------	---------------------	------------------	------------------	-----------------	----------------------	-----------------	-------------	----------------	-----------------------------	--------------------------	-----------------	------------------	-----------------	-------------	---------------	--------------	-----------------	-----------------	-------------	------------	-----------------	---------------	----------------	---------------------------	---------------	---------------	-------------	---------	------------------	-------------------------------	----------------------------	-----------	---------------	-------------------	--------------	------------------	----------------	-----------------	---------------	----------------	---------------------------	---------------	---------------	-------------	---------	------------------	-------------------------------	----------------------------	-----------	----------------	-----------------------	-------------	-------------	---------------	---------	-------------	------------------------	-----------	--------------------	--------------	-----------	--------------	------------------------------	----------------	------------	---------------	---------------	------------------	--------------------	-----------------	----------------	-------------	-------------	------------------	------------	----------------------------	---------------	-------------------	----------------------------	-------------------	-----------------	---------------------	--------------------	-----------	-----------------------	------------	--------	------------	---------	-----------------------	----------	---------------	-------------------------	------------------------	---------------------------	----------------------------	---------------------	------------	---------------	-------------------	--------------	------------------	----------------	-----------------	---------------	----------------	---------------------------	---------------	---------------	-------------	---------	------------------	-------------------------------	----------------------------	-----------	----------------	-----------------------	-------------	-------------	---------------	---------	-------------	------------------------	-----------	--------------------	--------------	-----------	--------------	------------------------------	----------------	------------	---------------	---------------	------------------	--------------------	-----------------	----------------	-------------	-------------	------------------	------------	----------------------------	---------------	-------------------	----------------------------	-------------------	-----------------	---------------------	--------------------	-----------	-----------------------	------------	--------	------------	---------

VICINITY MAP

SCALE: N.T.S.



SYMBOLS LEGEND

KEY NOTE SYMBOLS	1 (NEW)	1 (DEMO)
ROOM NUMBER (SEE ROOM LEGEND)	101	
DOOR NUMBER - SEE DOOR AND FRAME SCHEDULE	1	
WINDOW NUMBER - SEE WINDOW SCHEDULE	X	
WALL TYPE (MODIFIES WALL TYPE)	X	
DETAIL SYMBOL	7 - DETAIL NO. AB.1 - SHEET NO.	
DETAIL CUT SYMBOL	7 - DETAIL NO. AB.1 - SHEET NO.	
ELEVATIONS	A - ELEVATION NO. 2 - DRAWING NO. AS.0 - SHEET NO. B	
SECTION/ELEVATION KEY	1 - SECTION/ A1.0 - SHEET NO.	
DIMENSION LINES	8'-0"	
ACCESSIBLE WHEELCHAIR SPACE, 30"W x 48"D CLEAR FLOOR SPACE, 27"H CLEAR KNEE SPACE MIN. 34"H MAX. TO TOP OF TABLE/COUNTER.	30" 48"	
60" DIAMETER CLEAR WHEELCHAIR TURNING CIRCLE	60"	
INDICATES REQUIRED CLR. FLR SPACE AT DOOR OPENINGS.		
WORK CONTROL/DATUM		
BREAK LINE		
CENTER LINE		
GRID LINE SYMBOL	1	
MATCHLINE SYMBOL		
REVISION MARK		
REVISION NO. AREA OF REVISION		
PROJECT REFERENCE NORTH		

SHEET INDEX

GENERAL	G-001 TITLE SHEET
ARCHITECTURAL	A-100 SITE PLAN SITE DETAILS A-101 EXISTING RESTROOM PLANS A-200 BUILDING 'Q' OVERALL FLOOR PLAN A-201 ENLARGED DEMO PLAN ENLARGED DEMO FLOOR PLAN INTERIOR ELEVATIONS
	A-401 DOOR SCHEDULE A-402 ROOM FINISH SCHEDULE
	A-600 REFLECTED CEILING PLAN A-800 DETAILS
ELECTRICAL	FA-100 FIRE ALARM CALCULATIONS SHEET FA-200 FIRE ALARM DEMO PLAN FIRE ALARM PLAN FA-300 FIRE ALARM DATA SHEETS
TOTAL SHEET COUNT:	12

PROJECT TEAM

ARCHITECT
 KRUGER BENSEN ZIEMER ARCHITECTS, INC.
 199 FIGUEROA STREET, SUITE 100A, VENTURA, CA 93001
 OFFICE: (805) 650-1033

PRINCIPAL-IN-CHARGE: TODD A. JESPERSEN, AIA
 EMAIL ADDRESS: toddj@kbzarch.com

PROJECT TEAM:
 JONATHAN D. LEE
 EMAIL ADDRESS: jonathanl@kbzarch.com

PATRICK PANLAQUI
 EMAIL ADDRESS: patrickp@kbzarch.com

ELECTRICAL ENGINEER
 C. HOOD & ASSOCIATES, INC.
 858 EAST FRONT STREET, VENTURA, CA 93001
 OFFICE: (805) 641-4012

ENGINEER: CRAIG HOOD
 EMAIL ADDRESS: craig@choodassociates.com

PROJECT DATA

PROJECT LOCATION : 4660 MISSION OAKS BLVD, CAMARILLO, CA 93012
 FIRE DISTRICT : COUNTY OF VENTURA
 BUILDING OCCUPANCY : B
 BUILDING CONSTRUCTION TYPE : V-B (NON SPRINKLERED)
 ACTUAL LOBBY AREA : 200 SQ. FT.
 NO NEW SQUARE FOOTAGE

PROJECT SCOPE

THE PROJECT IS TO PROVIDE A SECURED ADMINISTRATION RECEPTION AREA BY INSTALLING A PERMANENT WALL WITH A SECURITY WINDOW BETWEEN THE LOBBY AND THE RECEPTION AREA. SCOPE OF WORK INCLUDES DEMOLITION, FRAMING, FINISHING, AND ASSOCIATED ELECTRICAL WORK.

OWNER

OXNARD UNION HIGH SCHOOL DISTRICT
 309 S. 'K' STREET, OXNARD, CA 93030
 OFFICE: (805) 385-2500

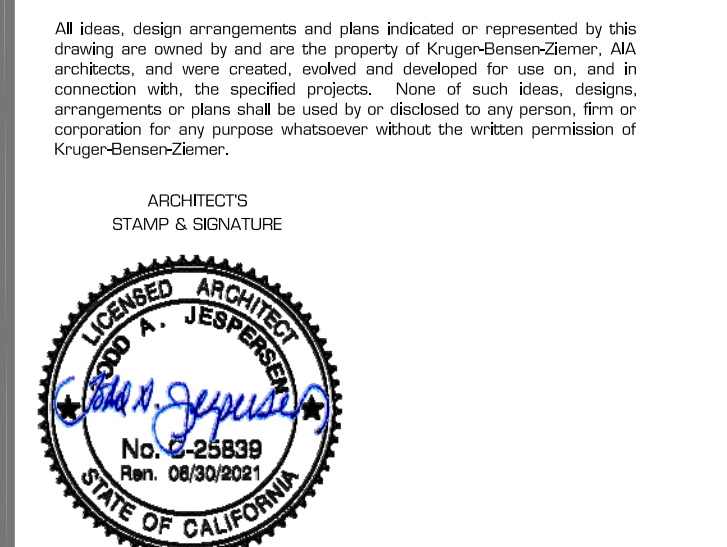
OXNARD UNION HIGH SCHOOL DISTRICT
 ADOLFO CAMARILLO HIGH SCHOOL
 4660 MISSION OAKS BLVD, CAMARILLO, CA 93012
 SITE SECURITY IMPROVEMENTS



KRUGER BENSEN ZIEMER ARCHITECTS, INC. AIA
 199 FIGUEROA ST, SUITE 100A VENTURA, CA 93001
 TELEPHONE (805) 650-1033

TODD A. JESPERSEN, AIA
 ARCHITECTURAL ASSISTANT

JONATHAN D. LEE
 ARCHITECTURAL ASSISTANT

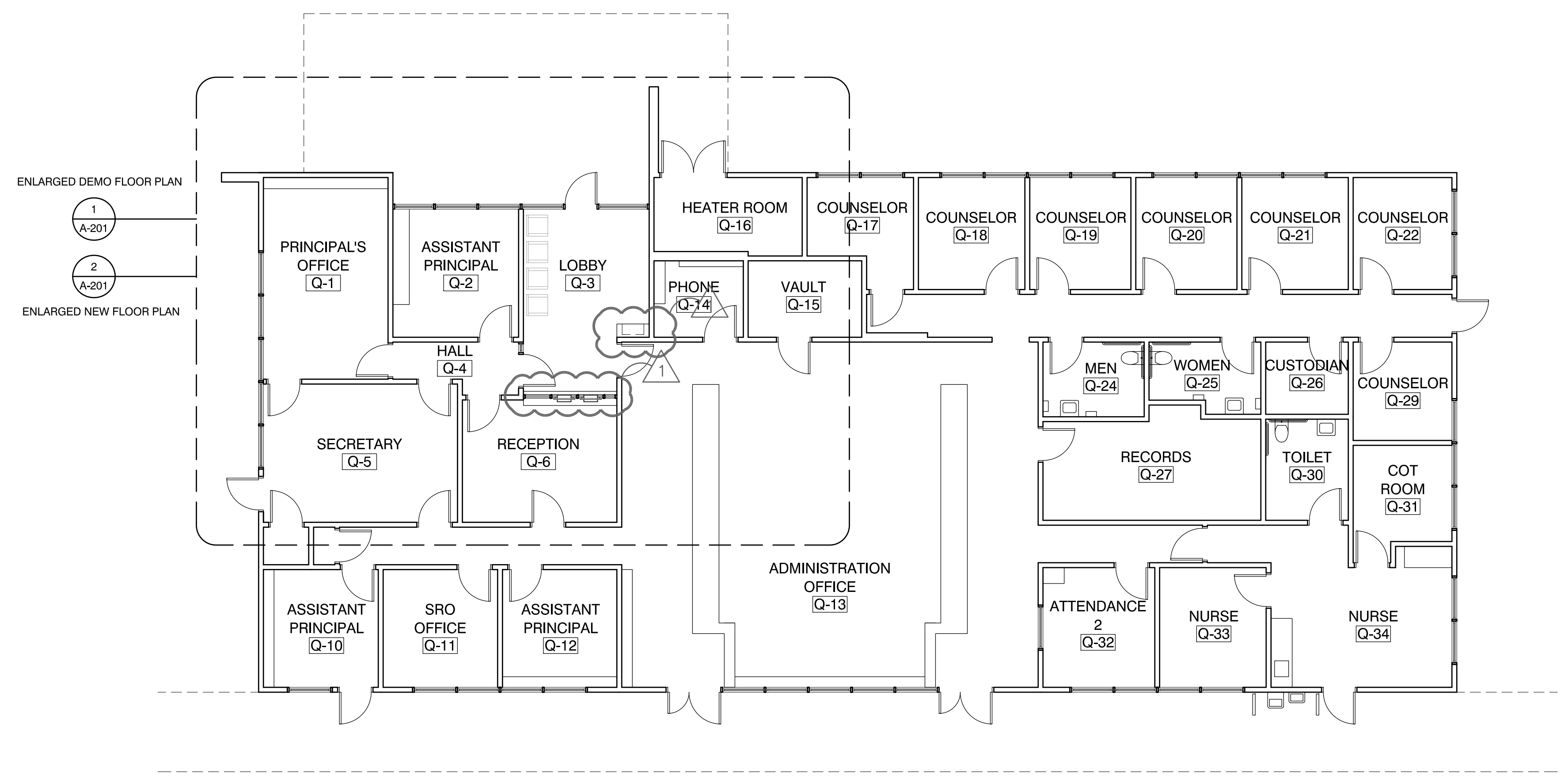


REVISION	DESCRIPTION	DATE	BY
REVISIONS_01		8/30/19	TJ

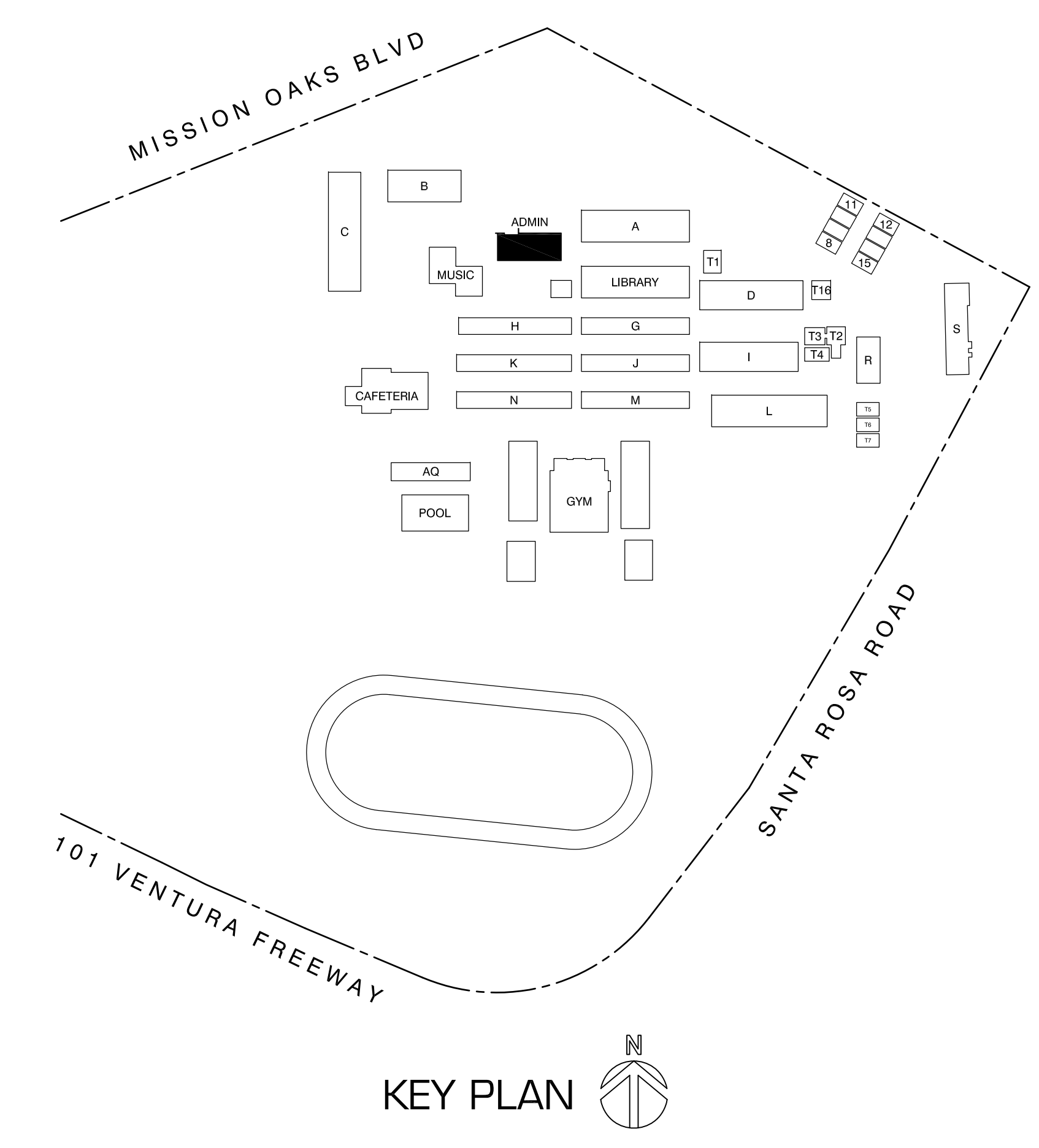
DRAWN	TJ
CHECKED	JL
DATE	1/19/2018
JOB. NO.	18014

SHEET	TITLE SHEET
TITLE	

G-001



1 BUILDING 'Q' OVERALL FLOOR PLAN
 SCALE : 1/8" = 1'-0"



KEY PLAN



KRUGER BENSEN ZIEMER ARCHITECTS, INC. AIA
 199 FIELDRON ST., SUITE 100A VENTURA CA 93001
 TELEPHONE (805) 850-1033

TODD A. JESPERSEN, AIA
 PRINCIPAL/ARCHITECT

JONATHAN D. LEE
 ARCHITECTURAL ASSISTANT

All ideas, design arrangements and plans indicated or represented by this drawing are owned by and are the property of KrugerBensenZiemer, AIA, architects, and were created, edited and developed for use on, and in connection with, the specific project. None of such ideas, design, arrangements or plans shall be used by or disclosed to any person, firm or corporation for any purpose whatsoever without the written permission of KrugerBensenZiemer.

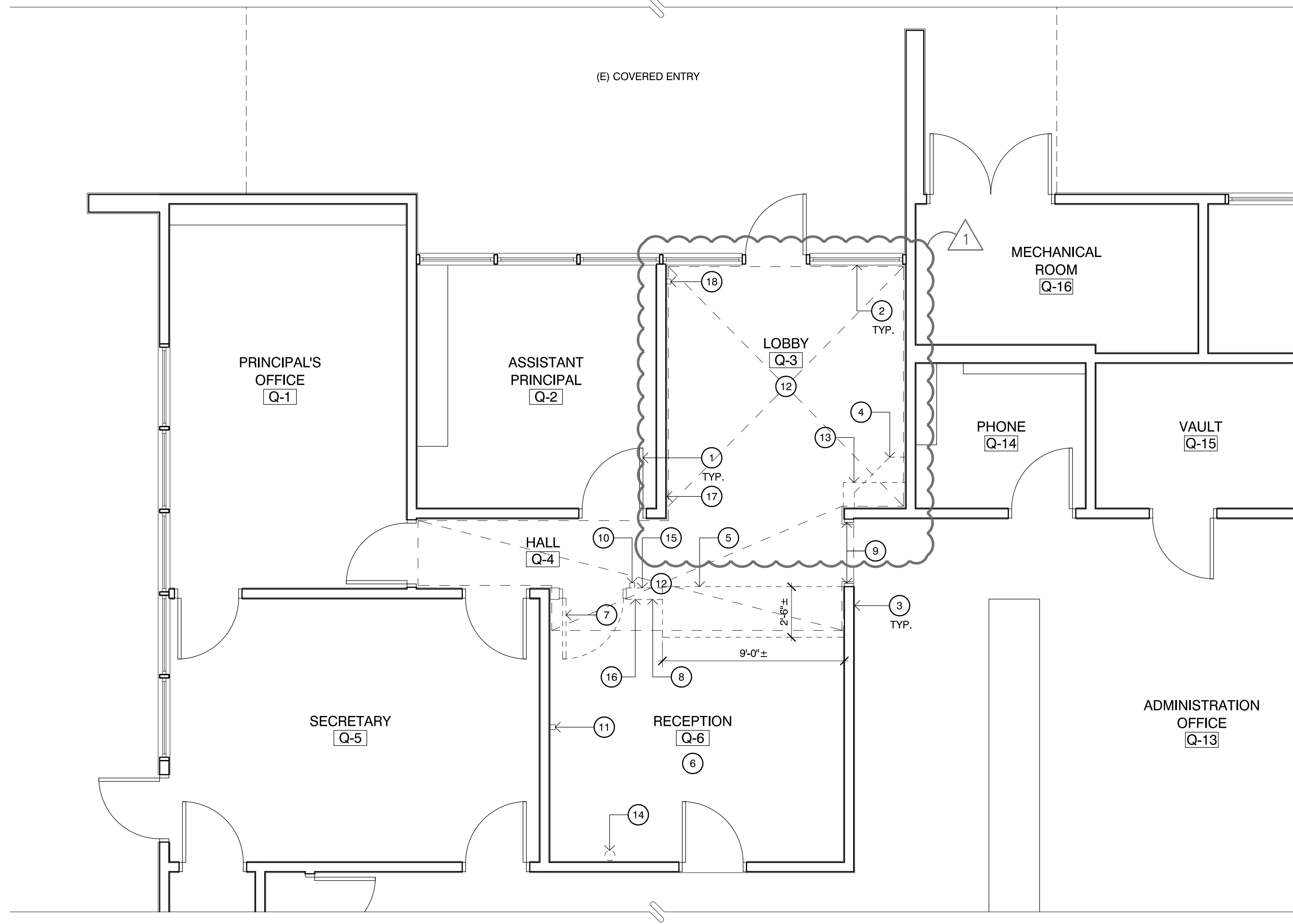


ARCHITECTS
 STAMP & SIGNATURE

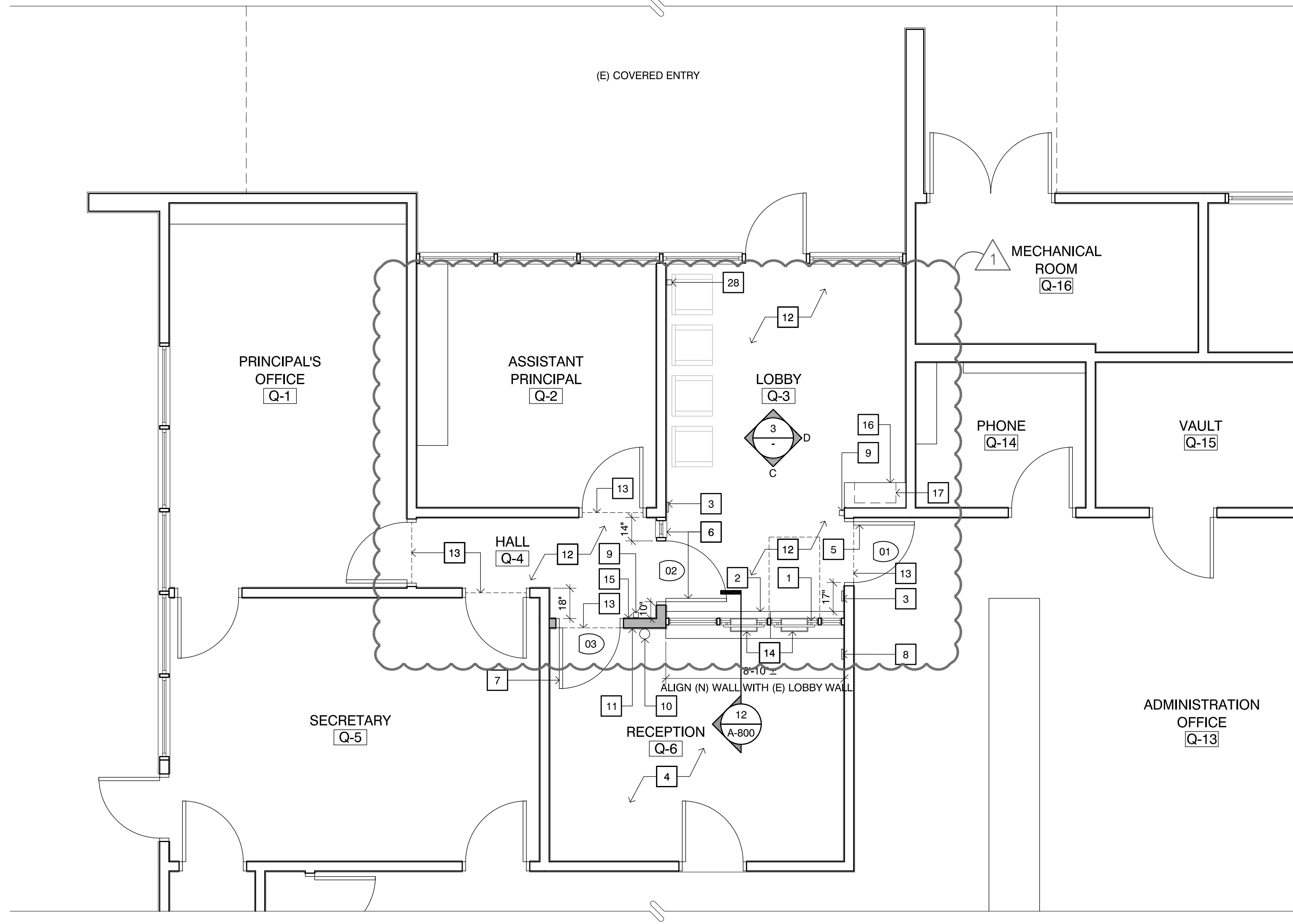
REVISION	REVISIONS.01	DATE	DESCRIPTION	DATE	BY
1		8/30/19			TJ

DRAWN JL
 CHECKED TJ
 DATE 1/19/2018
 JOB. NO. 18014

SHEET BUILDING 'Q' OVERALL FLOOR PLAN
 TITLE



1 ENLARGED DEMO FLOOR PLAN
 SCALE: 1/4" = 1'-0"



2 ENLARGED NEW FLOOR PLAN
 SCALE: 1/4" = 1'-0"

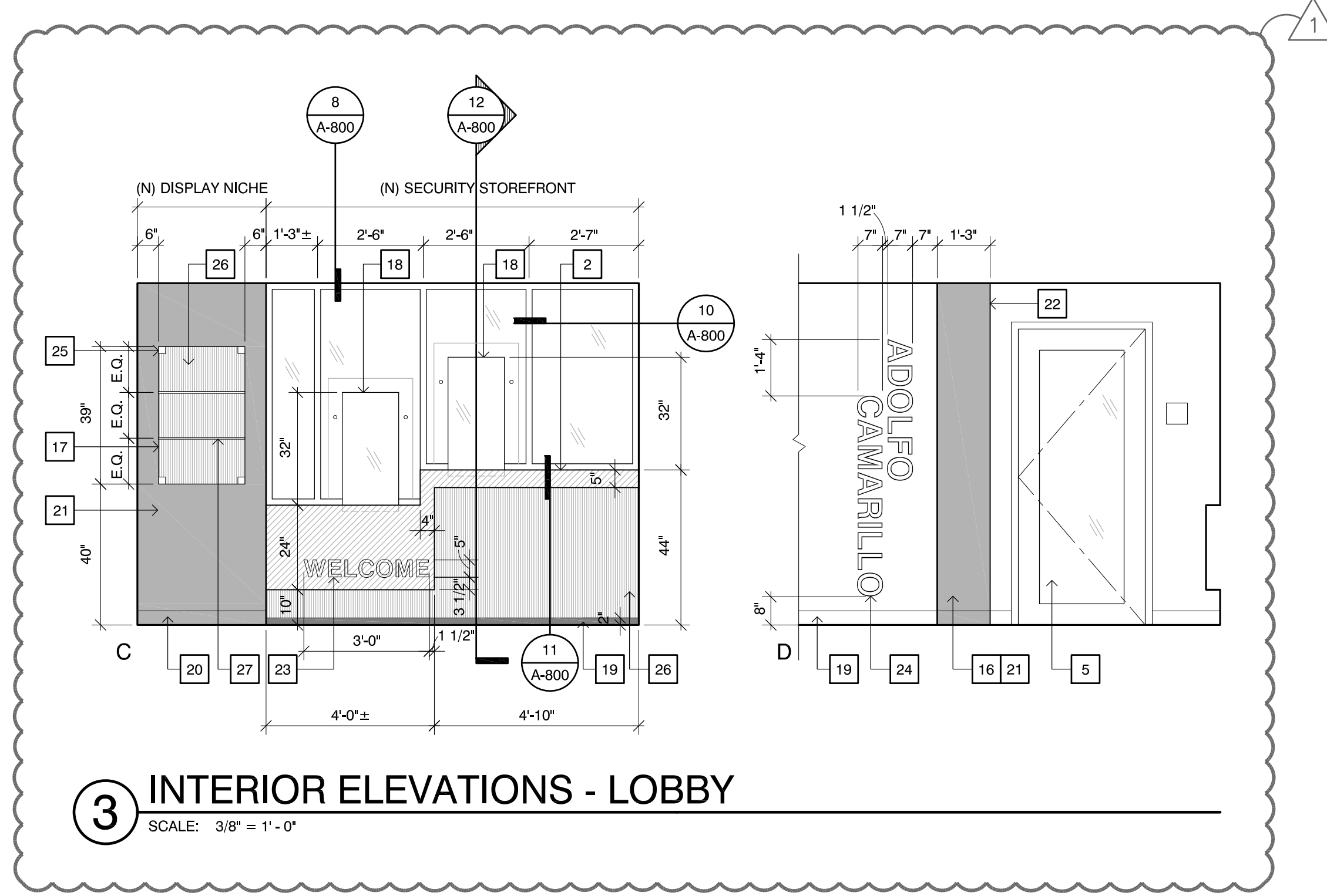
DEMO PLAN KEYNOTES

- 1 (E) DOOR TO REMAIN
- 2 (E) WINDOW TO REMAIN
- 3 (E) WALL TO REMAIN
- 4 (E) CABINET TO BE REMOVED
- 5 DEMO (E) COUNTER & BASE CABINETS
- 6 REMOVE (E) CARPET & RUBBER BASE
- 7 DEMO (E) DOOR
- 8 DEMO (E) WALL
- 9 DEMO (E) DOOR FRAME/CASING
- 10 UPDATE (E) FIRE ALARM STROBE TO HORN/STROBE AND RELOCATE
- 11 (E) FIRE ALARM DEVICE TO REMAIN
- 12 REMOVE (E) VCT, CARPET & BASE FOR (N) WORK
- 13 REMOVE (E) CEILING AS REQUIRED FOR NEW BLOCKING
- 14 RELOCATE (E) FIRE EXTINGUISHER
- 15 RELOCATE (E) WALL OUTLET
- 16 RELOCATE (E) LIGHT SWITCH
- 17 (E) LIGHT SWITCH TO REMAIN
- 18 (E) PULL STATION TO REMAIN

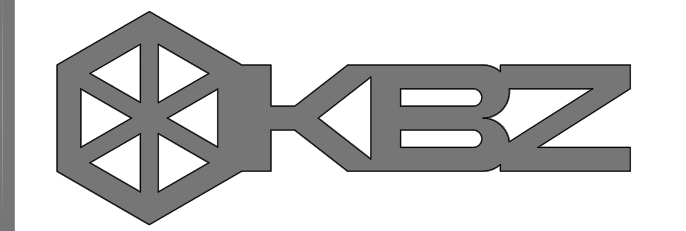
NEW PLAN & INTERIOR ELEVATION KEYNOTES

- 1 (N) SECURITY STOREFRONT ASSEMBLY
- 2 (N) HI-LO SOLID SURFACE COUNTER
- 3 (N) ACCESS CARD READER @ +40" AFF.
- 4 (N) ENHANCED RESILIENT TILE
- 5 (N) DOOR & FRAME IN (E) OPENING
- 6 (N) INTEG. H.M. SIDE LIGHT + DOOR & FRAME w/ BULLET-RESISTANT 1-1/4" LP-125 LAMINATED GLASS
- 7 (N) DOOR & FRAME
- 8 (N) DOOR ACCESS CONTROLS @ +36" AFF
- 9 (N) LOCATION FOR (N) FIRE ALARM HORN/STROBE
- 10 (N) LOCATION FOR (E) FIRE EXTINGUISHER
- 11 (N) LOCATION FOR LIGHT SWITCH
- 12 (N) EXPOSED CONC. w/ STAIN
- 13 (N) ALUMINUM TRANSITION STRIP
- 14 (N) BULLET-TRAP RECESSED CURRENCY TRAY
- 15 (N) LOCATION FOR WALL OUTLET
- 16 (N) DISPLAY NICHE
- 17 (N) PAINTED MDF w/ BORE HOLES FOR ADJUSTABLE SHELVING
- 18 (N) RECTANGULAR TRANSACTION WINDOW
- 19 (N) 2" DRMB ALUM. DRYWALL REVEAL BASE
- 20 (N) RUBBER BASE
- 21 (N) GYP. BRD. PAINTED SEE PAINT COLOR LEGEND ON SHEET A-402
- 22 (N) 1/2" REVEAL
- 23 (N) VINYL LETTERS ADHERED TO SOLID SURFACE COUNTER (FONT TO BE SELECTED BY ARCHITECT)
- 24 (N) VINYL LETTERS ADHERED TO WALL (FONT TO BE SELECTED BY ARCHITECT)
- 25 (N) FRAME-LESS GLASS WITH A DOOR LOCK
- 26 (N) WOOD PATTERN HIGH PRESSURE LAMINATE
- 27 (N) ADJUSTABLE GLASS SHELVES
- 28 (E) PULL STATION TO REMAIN

LEGEND
 (N) WALL, MATCH (E) ADJACENT FINISHES



3 INTERIOR ELEVATIONS - LOBBY
 SCALE: 3/8" = 1'-0"



KRUGER BENSEN ZIEMER ARCHITECTS, INC.
 1599 FIDELITY ST., SUITE 100A VENTURA, CA 93001
 TELEPHONE (805) 650-1033

TODD A. JESPERSEN, AIA
 PRINCIPAL/ARCHITECT

JONATHAN D. LEE
 ARCHITECTURAL ASSISTANT

All ideas, design arrangements and plans indicated or represented by this drawing are owned by and are the property of KrugerBensenZiemer, Inc. All copyrights, and more created, copied and distributed for use on, and in connection with, the specific project. None of such ideas, designs, arrangements or plans shall be used by or disclosed to any person, firm or corporation for any purpose whatsoever without the written permission of KrugerBensenZiemer.

ARCHITECTS
 STAMP & SIGNATURE



△	-	-/-	XX
△	-	-/-	XX
△	-	-/-	XX
△	-	-/-	XX
△	-	-/-	XX
△	REVISIONS.01	8/30/19	TJ
REVISION	DESCRIPTION	DATE	BY

DRAWN JL
 CHECKED TJ
 DATE 1/19/2018
 JOB. NO. 18014

SHEET ENLARGED DEMO FLOOR PLAN
 TITLE ENLARGED NEW FLOOR PLAN
 INTERIOR ELEVATIONS

DOOR, FRAME AND SIGNAGE MESSAGE SCHEDULE																												
DOOR	DOOR INFO																	SIGNAGE INFO										
	DOOR OPENING		DOOR					CUTOUTS		HDWR GROUP	ASS'Y FIRE RATING	FRAME				DETAILS				DOOR REMARKS	SIGN TYPE/ SEE DETAIL SIDE OF DOOR		DESCRIPTION		MESSAGE		SIGNAGE REMARKS	
	WIDTH	HEIGHT	TYPE	MATL	THICK	FIN	COLOR	LITE	LVR			TYPE	MATL	FIN	COLOR	HEAD	JAMB	SILL	SIGNAGE		PULL SIDE	PUSH SIDE	PULL SIDE	PUSH SIDE	PULL SIDE	PUSH SIDE		
1	3'-0"	7'-0"	A	ALUM	1 3/4"	FF	-	1	-	01	-	1	ALUM	FF	-	4	4	7	G1	S1	CARD READER & ACCESS CONTROL	S1	S1	◇	◇	EXIT	OFFICE	◇
2	3'-0"	7'-0"	A	ALUM	1 3/4"	FF	-	1	-	02	-	1	ALUM	FF	-	4	4	7	G1	S1	CARD READER & ACCESS CONTROL	S1	S1	◇	◇	PRINCIPAL/ ASSISTANT PRINCIPAL	EXIT	◇
3	3'-0"	7'-0"	A	ALUM	1 3/4"	FF	-	1	-	03	-	1	ALUM	FF	-	4	4	7	G1	S1		S1	S1	◇	◇	EXIT	RECEPTION	◇

DOOR SCHEDULE KEYNOTES

- 1 DOOR HARDWARE PROVIDED BY MODULAR PARTITION MANUFACTURER

SIGNAGE KEYNOTES

- 1 EXTERIOR PANEL SIGN
- 2 INTERIOR PANEL SIGN

GLAZING TYPES

- GL1 LAMINATED SAFETY GLASS (CLEAR) - 1/2" THICK
- GL2 BULLET-RESISTANT 1-1/4" LP 125 - LAMINATED (CLEAR)

ABBREVIATIONS

- ALUM ALUMINUM
- FF FACTORY FINISH
- HM HOLLOW METAL
- MFR PER MANUFACTURER
- PT PAINTED
- SC WD SOLID CORE WOOD
- SS STAINLESS STEEL

GENERAL NOTES

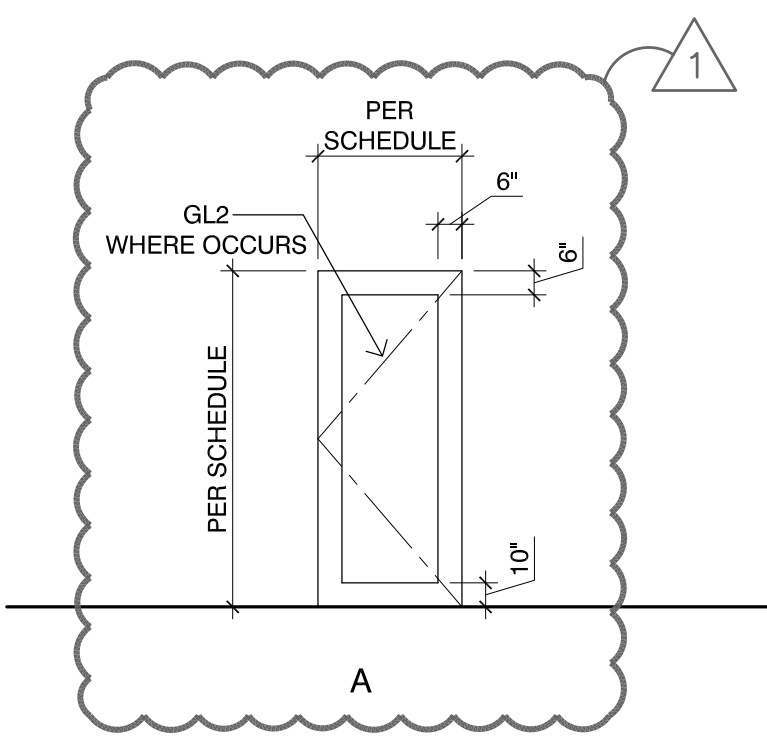
- SEE S1/A-800 FOR INTERIOR PANEL SIGNAGE MOUNTING HEIGHTS.
- SEE DOOR & FRAME SCHEDULE FOR PANEL SIGNAGE ASSOCIATED w/ A DOOR.
- SEE SHEET A-800 FOR SIGN DETAILS.

SIGNAGE NOTES

- SK1 PANEL WALL MOUNT

DOORS NOTES

- VERIFY ALL ROUGH OPENINGS DIMENSIONS PRIOR TO FABRICATION.
- ALL DOORS SHALL HAVE LEVER HARDWARE U.G.N. DOOR HANDLES, PULLS, LATCHES, LOCKS, AND OTHER OPERATING DEVICES SHALL BE INSTALLED MINIMUM 34" AND MAXIMUM 48" ABOVE FINISH FLOOR. (CBC 1008.1.9.2).
- ALL EXIT DOORS SHALL BE OPENABLE FROM INSIDE WITHOUT THE USE OF A KEY OR SPECIAL KNOWLEDGE (CBC 1008.1.9) AND THE FORCE REQUIRED TO PUSH OR PULL AN EGRESS DOOR TO THE OPEN POSITION SHALL NOT EXCEED 5 POUND (CBC 1008.1.3).
- CONTRACTOR SHALL PROVIDE POWER AS NECESSARY FOR FULL OPERATION OF KEYPAD ACCESS.
- PANIC HARDWARE SHALL CONTAIN A MINIMUM OF TWO LOCKING POINTS ON EACH DOOR.
- GLAZING IN DOORS OR WITHIN 40" OF ANY DOOR LOCKING MECHANISM SHALL BE FULLY TEMPERED SAFETY GLASS.
- ALL PEDESTRIAN DOORS AND GATES (EXCEPT SLIDING DOORS) SHALL BE PROVIDED WITH A KICKPLATE AT THE BOTTOM 10 INCHES OF THE PUSH SIDE OF THE DOOR.
- PROVIDE STEEL INSERTS AT STOREFRONTS AS REQUIRED.



DOOR TYPES
SCALE: 1/4" = 1'-0"



DOOR FRAME TYPES
SCALE: 1/4" = 1'-0"



KRUGER BENSEN ZIEMER ARCHITECTS, INC. AIA
 199 FIELSON ST, SUITE 100A VENTURA CA 93001
 TELEPHONE (805) 650-1033

TODD A. JESPERSEN, AIA
 PRINCIPAL/ARCHITECT
JONATHAN D. LEE
 ARCHITECTURAL ASSISTANT

All ideas, design arrangements and plans indicated or represented by this drawing are owned by and are the property of KrugerBensenZiemer, AIA, architects, and were created, edited and developed for use on, and in connection with, the specific project. None of such ideas, design, arrangements or plans shall be used by or disclosed to any person, firm or corporation for any purpose whatsoever without the written permission of KrugerBensenZiemer.



△	-	-/-	XX
△	-	-/-	XX
△	-	-/-	XX
△	-	-/-	XX
△	REVISIONS.01	8/30/19	XX
REVISION	DESCRIPTION	DATE	BY

DRAWN JL
 CHECKED TJ
 DATE 1/19/2018
 JOB. NO. 18014

SHEET DOOR SCHEDULE
 TITLE

ROOM FINISH SCHEDULE

ROOM NO.	ROOM NAME	FLOOR			BASE		WAINSCOT				WALLS								CEILING			REMARKS							
		SUB FLOOR	FLOOR MATERIAL	FINISH	COLOR	MATERIAL	FINISH	COLOR	MATERIAL	FINISH	COLOR	HEIGHT	NORTH		EAST		SOUTH		WEST		MATERIAL		FINISH	COLOR	HEIGHT				
													MATERIAL	FINISH	COLOR	MATERIAL	FINISH	COLOR	MATERIAL	FINISH						COLOR	MATERIAL	FINISH	COLOR
Q-4	HALL	F1	F3	FN3	C5	B1	FN1	C2	-	-	-	-	W1	FN2	P1	W1	FN2	P1	W2	FN2	P1	W1	FN2	P1	CL2	FN1	C3	VARIES	
Q-6	RECEPTION	F1	F2	FN1	C1	B1	FN1	C2	-	-	-	-	W2	FN2	P1	W1	FN2	P1	W1	FN2	P1	W1	FN2	P1	CL1	FN1	C3	VARIES	1
Q-3	LOBBY	F1	F3	FN3	C5	B1/B2	FN1	C2/C4	-	-	-	-	W1	FN2	P1	W1	FN2	P1	W3	FN1	C8	W1	FN2	P1	CL1&2	FN1	C3	VARIES	1

ROOM FINISH NOTES

1. ALL FINISHES SHALL COMPLY WITH CBC CHAPTERS 3, 4, 6, 7, 8 AND 10 AND CFC.
2. ALL EXPOSED STEEL FRAMING AND CONNECTORS AT BUILDING INTERIOR SHALL BE PAINTED.
3. ALL EXPOSED SPRINKLER PIPING AT BUILDING INTERIOR SHALL BE PAINTED.
4. ALL EXPOSED DUCTWORK SHALL BE PAINTED.
5. ALL EXPOSED GYPSUM BOARD SHALL RECEIVE A LEVEL 4 FINISH.
6. ALL INTERIOR WALL AND CEILING FINISHES SHALL MEET THE FLAMESPREAD AND SMOKE DEVELOPED INDEXES OF CBC TABLE 803.9.
7. FURNISH AND INSTALL 4'-0" HIGH 1" STAINLESS STEEL CORNER GUARDS AT ALL OUTSIDE WALL CORNERS WITHIN THE BUILDING.
8. CONTRACTOR SHALL BE RESPONSIBLE FOR SHOP DRAWINGS AND PROVIDING AND INSTALLING THE REQUIRED FACILITY INFRASTRUCTURE FOR THE SUPPORT SYSTEM SERVING ALL EQUIPMENTS. SUPPORT SYSTEMS INCLUDE, BUT NOT LIMITED TO CONDUITS, WIRES AND BOXES, UTILITIES SERVING ALL APPLIANCES. CONTRACTOR SHALL PROVIDE AND INSTALL ALL STRUCTURAL, MECHANICAL, PLUMBING, ELECTRICAL AND OTHER REQUIRED SUPPORT SERVICES NECESSARY TO SUPPORT THE OPERATION OF THE BUILDING COMPONENTS.

OXNARD UNION HIGH SCHOOL DISTRICT
 ADOLFO CAMARILLO HIGH SCHOOL
 4660 MISSION OAKS BLVD. CAMARILLO, CA. 93012
 SITE SECURITY IMPROVEMENTS

MATERIALS LEGEND		MISC COLOR LEGEND	
Subfloor/Flooring	F1 (E) CONCRETE SUBFLOOR F2 (N) ENHANCED RESILIENT TILE F3 (N) EXPOSED (E) CONCRETE, PATCH AS REQUIRED	Walls	C1 ENHANCED RESILIENT TILE COLOR AND PATTERN TBD C2 RUBBER BASE COLOR TBD C3 TECTUM ACOUSTIC CEILING PANEL COLOR TBD C4 2" DRMB ALUM. BASE COLOR TBD C5 EXPOSED CONCRETE PATTERN & COLOR TBD C6 WOOD PATTERN HIGH PRESSURE LAMINATE COLOR TBD
Base	B1 (N) 4" RUBBER BASE B2 (N) 2" DRMB ALUM. DRYWALL REVEAL BASE	Ceilings	PAINT COLOR LEGEND P1 DUNN EDWARDS, PAINT COLOR: T.B.D. (WALLS & CEILINGS) P2 DUNN EDWARDS, PAINT COLOR: T.B.D. (DISPLAY CASE)
Finish	FN1 FACTORY FINISH FN2 PAINT FN3 STAINED	Keynotes	KEYNOTES 1 NOT USED
		General Notes	GENERAL NOTES 1. DIRECTIONAL LOCATIONS INDICATED ON ROOM FINISH SCHEDULES ARE ORIENTATED ACCORDING TO TRUE NORTH AS SHOWN ON PLAN. 2. ALL WALLS TO BE PAINTED P1 U.N.O. 3. PROVIDE TRANSITIONS AT ALL FLOORING MATERIAL CHANGES - REF DETAILS THIS SHEET. 4. ALL MATERIALS TO MEET CBC TABLE 8A FOR FRAME SPREAD. 5. INTERIOR WALL AND CEILING FINISHES SHALL BE CLASSIFIED FOR FIRE PERFORMANCE AND SMOKE DEVELOPMENT PER 2016 CALIFORNIA BUILDING CODE, SEC. 803. 6. INTERIOR WALL AND CEILING FINISHES SHALL BE CLASSIFIED BY OCCUPANCY PER TABLE 803.9 OR BE TESTED PER SEC. 803.12 (NFPA 286 CRITERIA) OF 2016 CALIFORNIA BUILDING CODE. 7. TEXTILE WALL AND VINYL COVERINGS SHALL BE TESTED PER SEC. 803.1.3 ACCEPTANCE CRITERIA OF NFPA 265 OR PER SEC. 803.1.4 ACCEPTANCE CRITERIA TESTED TO ASTM E84 OR UL 723 CLASS A FLAME SPREAD INDEX AND HAVE AFSS PER SEC. 903.1.1 OR 903.1.1.2, 2010 CALIFORNIA BUILDING CODE. a. EXCEPTION: 803.2 MATERIALS LESS THAN 0.036" THICK APPLIED DIRECTLY NEED NOT BE TESTED. b. PER SEC. 803.5, TEXTILE WALL COVERINGS, INCLUDING CARPET, SHALL BE TESTED USING PRODUCT MOUNTING SYSTEM INCLUDING ADHESIVE. c. PER SEC. 803.6, TEXTILE CEILING COVERINGS SHALL BE TESTED USING PRODUCT MOUNTING SYSTEM INCLUDING ADHESIVE. d. PER SEC. 803.7, EXPANDED VINYL WALL COVERINGS SHALL BE TESTED USING PRODUCT MOUNTING SYSTEM INCLUDING ADHESIVE. e. PER SEC. 803.8, EXPANDED VINYL CEILING COVERINGS SHALL BE TESTED USING PRODUCT MOUNTING SYSTEM INCLUDING ADHESIVE. 8. PER SEC. 803.810, STABILITY - INTERIOR FINISH MATERIALS WILL NOT BECOME READILY DETACHED WHERE SUBJECTED TO ROOM TEMP. OF 200 DEG. F FOR 30 MIN. 9. DECORATIVE TRIM & MATERIALS SHALL COMPLY WITH 2016 CALIFORNIA BUILDING CODE. 10. THERMAL AND ACOUSTICAL INSULATION SHALL COMPLY WITH SEC. 719, 2010 CALIFORNIA BUILDING CODE.

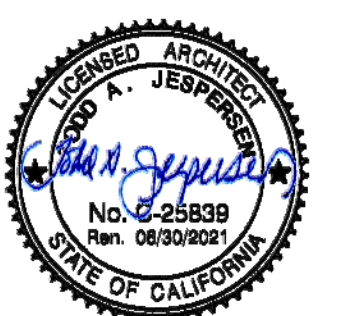


KRUGER BENSEN ZIEMER ARCHITECTS, INC. AIA
 199 FELERSON ST., SUITE 100A VENTURA CA 93001
 TELEPHONE (805) 650-1033

TODD A. JESPERSEN, AIA
 ARCHITECT/ARCHITECT-IN-CHARGE
JONATHAN D. LEE
 ARCHITECTURAL ASSISTANT

All ideas, design arrangements and plans indicated or represented by this drawing are owned by and are the property of Kruger-Bensen-Ziemer, AIA, architects, and were created, edited and developed for use on, and in connection with, the specific project. None of such ideas, design, arrangements or plans shall be used by or disclosed to any person, firm or corporation for any purpose whatsoever without the written permission of Kruger-Bensen-Ziemer.

ARCHITECTS
 STAMP & SIGNATURE



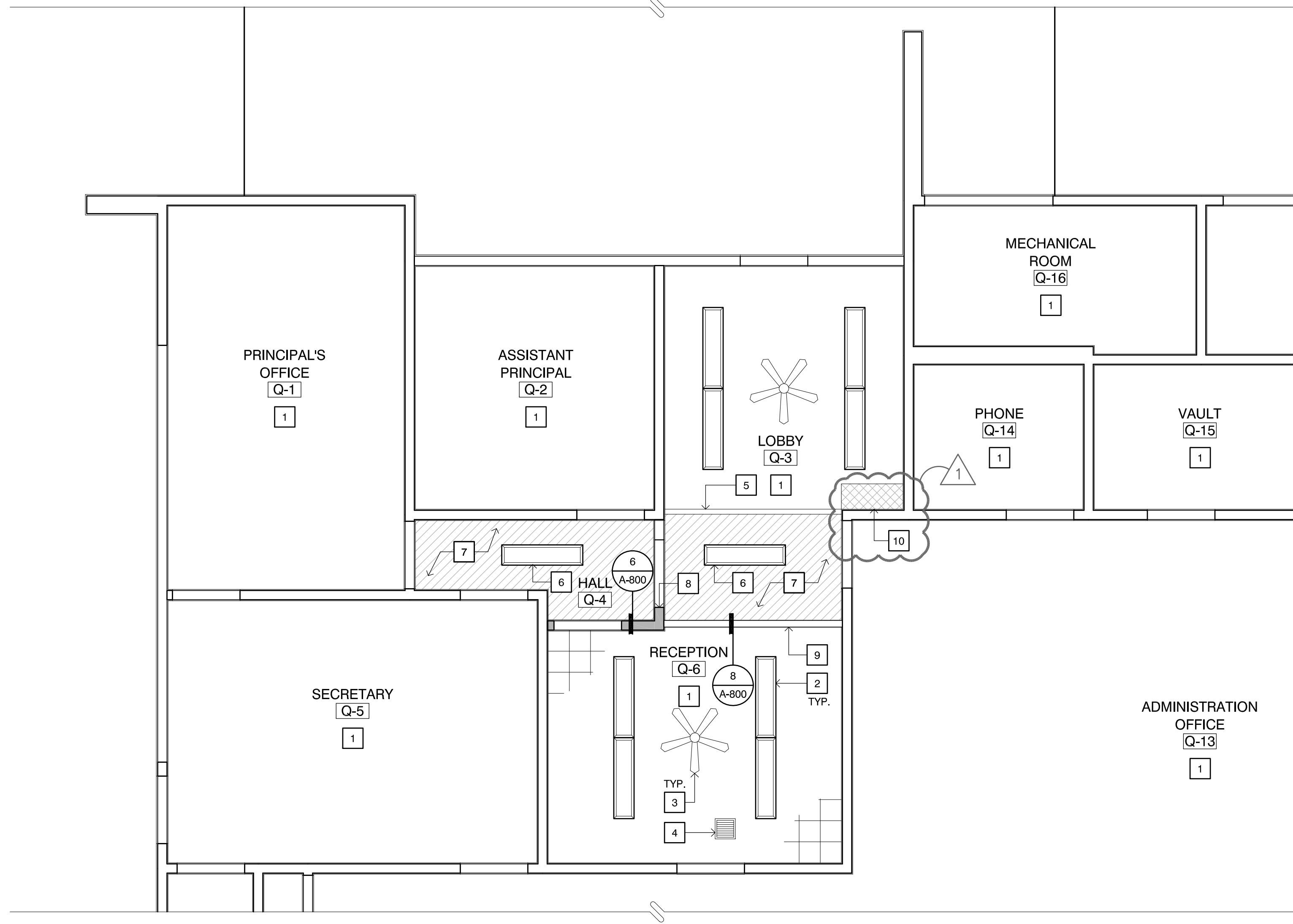
△	-	-/-/-	XX
△	-	-/-/-	XX
△	-	-/-/-	XX
△	-	-/-/-	XX
△	REVISIONS.01	8/30/19	TJ
REVISION	DESCRIPTION	DATE	BY

DRAWN JL
 CHECKED TJ
 DATE 1/19/2018
 JOB NO. 18014

SHEET ROOM FINISH SCHEDULE
 TITLE

SHEET

A-402



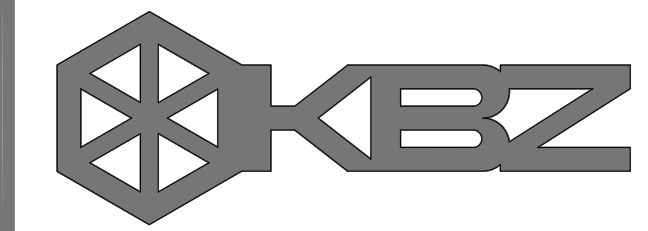
CEILING PLAN KEYNOTES

- 1 (E) CEILING TO REMAIN
- 2 (E) LIGHT FIXTURE TO REMAIN
- 3 (E) FAN TO REMAIN
- 4 (E) GRILLE TO REMAIN
- 5 (E) GYPSUM BOARD SOFFIT EDGE TO REMAIN
- 6 REMOVE & RE-INSTALL (E) LIGHT FIXTURE AS REQ'D. FOR CEILING TILE REPLACEMENT
- 7 REMOVE (E) 12x12 GLUED ON CEILING TILE & REPLACE WITH (N) USE Henry 237 AcousGlum CEILING TILE ADHESIVE (SOLVENT-FREE, NONFLAMMABLE) TO INSTALL.
- 8 (N) WALL - FROM FLOOR TO CEILING
- 9 (N) SECURITY STOREFRONT
- 10 (N) PATCH & REPAIR (E) CEILING AS REQUIRED. MATCH (E) ADJACENT FINISHES

LEGEND

- (N) WALL, MATCH (E) ADJACENT FINISHES
- (N) 12x12 GLUED ON CEILING TILE
- (N) CEILING PATCH AS REQUIRED

1 REFLECTED CEILING PLAN
SCALE: 1/4" = 1'-0"



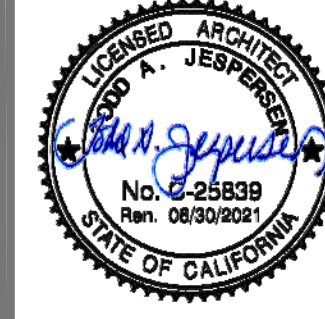
KRUGER BENSEN ZIEMER ARCHITECTS, INC. AIA
 199 FIELSON ST., SUITE 100A VENTURA CA 93001
 TELEPHONE (805) 850-1033

TODD A. JESPERSEN, AIA
 PRINCIPAL/ARCHITECT

JONATHAN D. LEE
 ARCHITECTURAL ASSISTANT

All ideas, design arrangements and plans indicated or represented by this drawing are owned by and are the property of KrugerBensenZiemer, AIA, architects, and were created, edited and developed for use on, and in connection with, the specific project. None of such ideas, design, arrangements or plans shall be used by or disclosed to any person, firm or corporation for any purpose whatsoever without the written permission of KrugerBensenZiemer.

ARCHITECTS
 STAMP & SIGNATURE

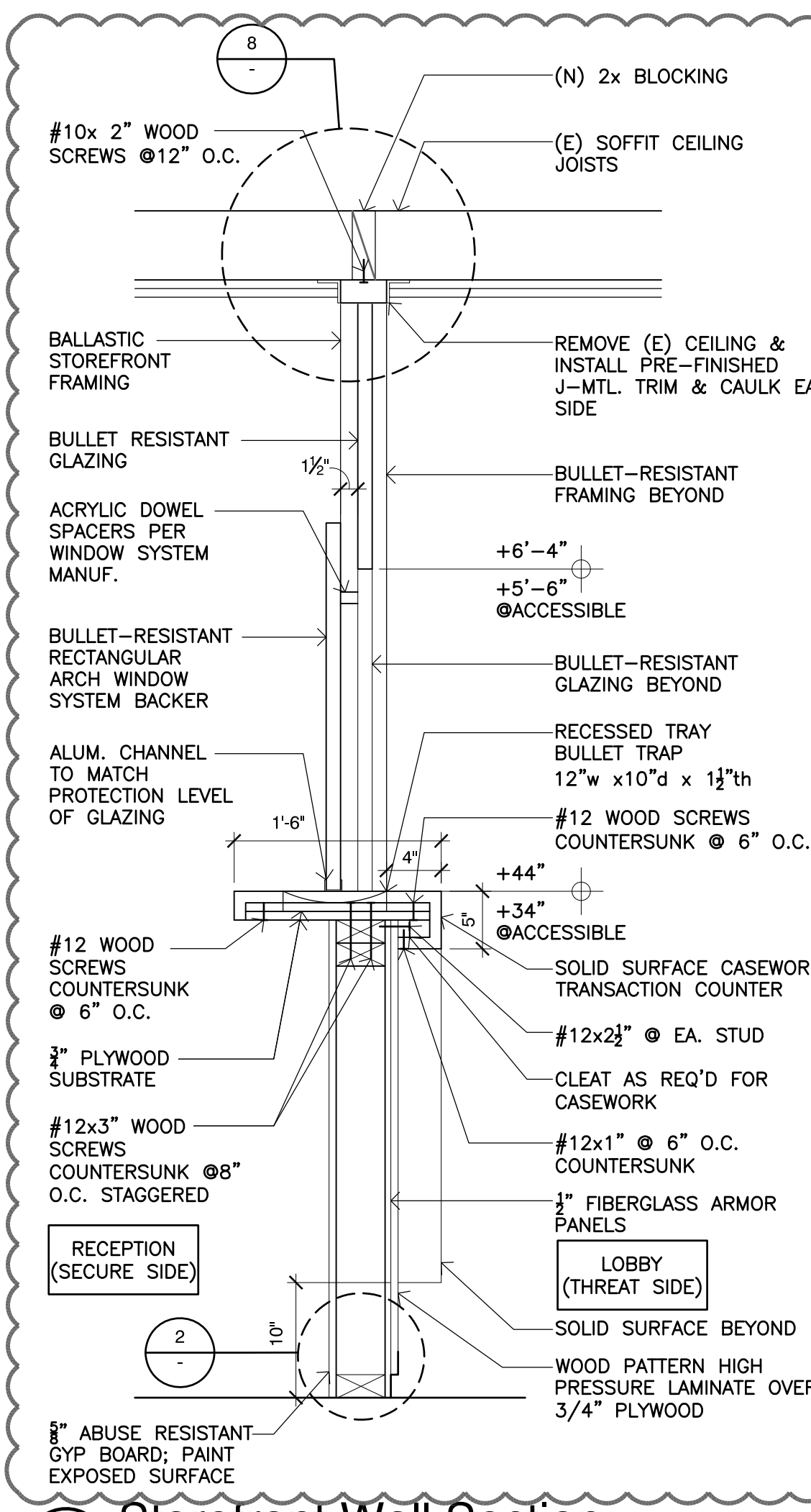


△	-	-/-	XX
△	-	-/-	XX
△	-	-/-	XX
△	-	-/-	XX
△	-	-/-	XX
△	REVISIONS.01	8/30/19	TJ
△	REVISION DESCRIPTION	DATE	BY

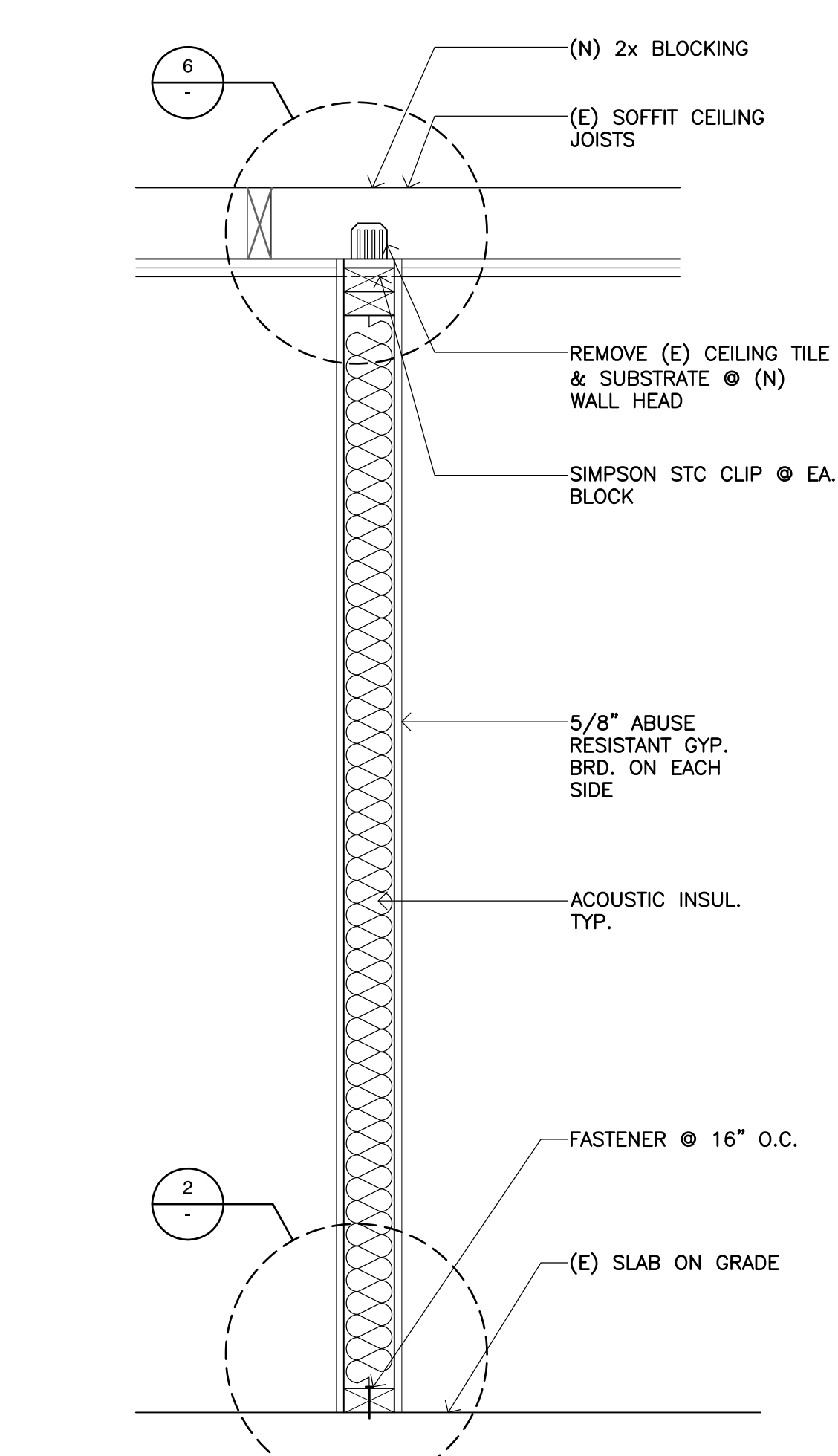
DRAWN JL
 CHECKED TJ
 DATE 1/19/2018
 JOB. NO. 18014

SHEET REFLECTED CEILING PLAN
 TITLE

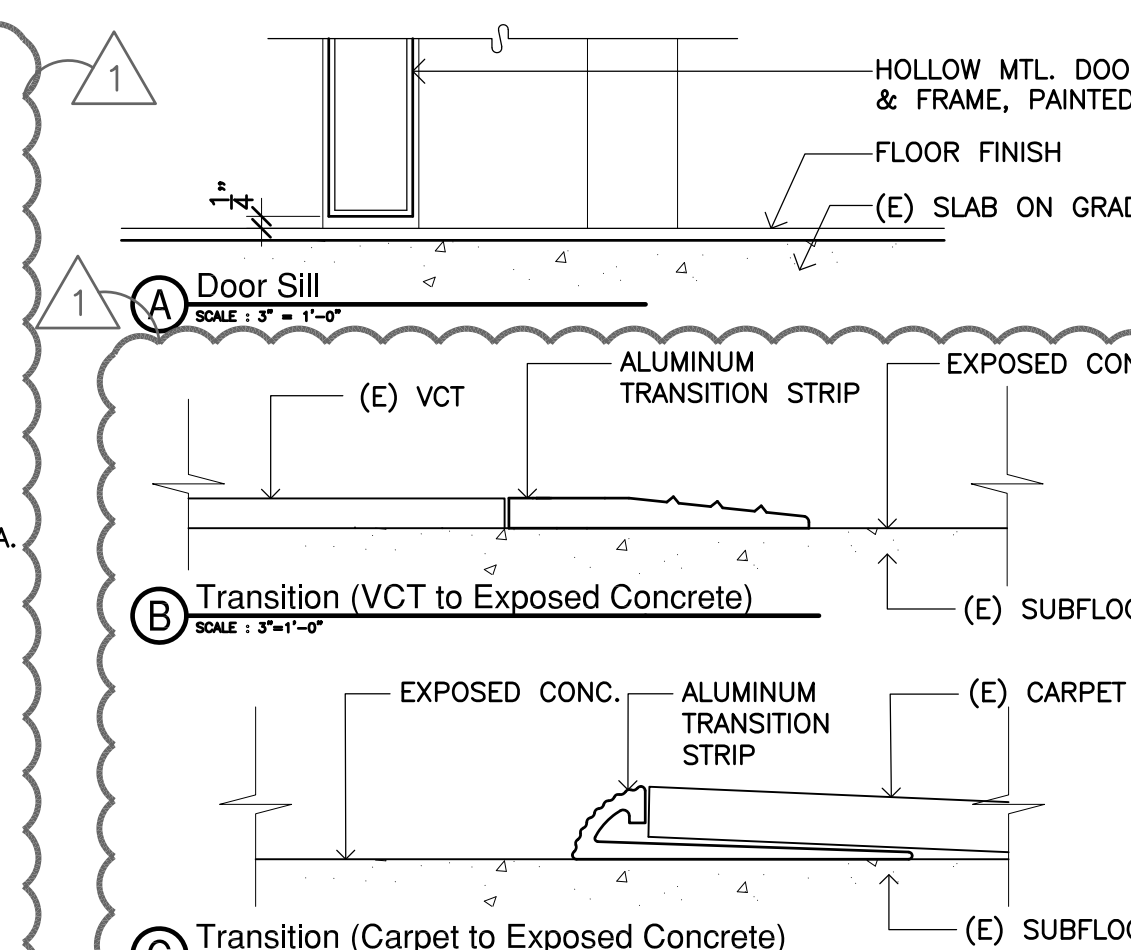
SHEET
A-600



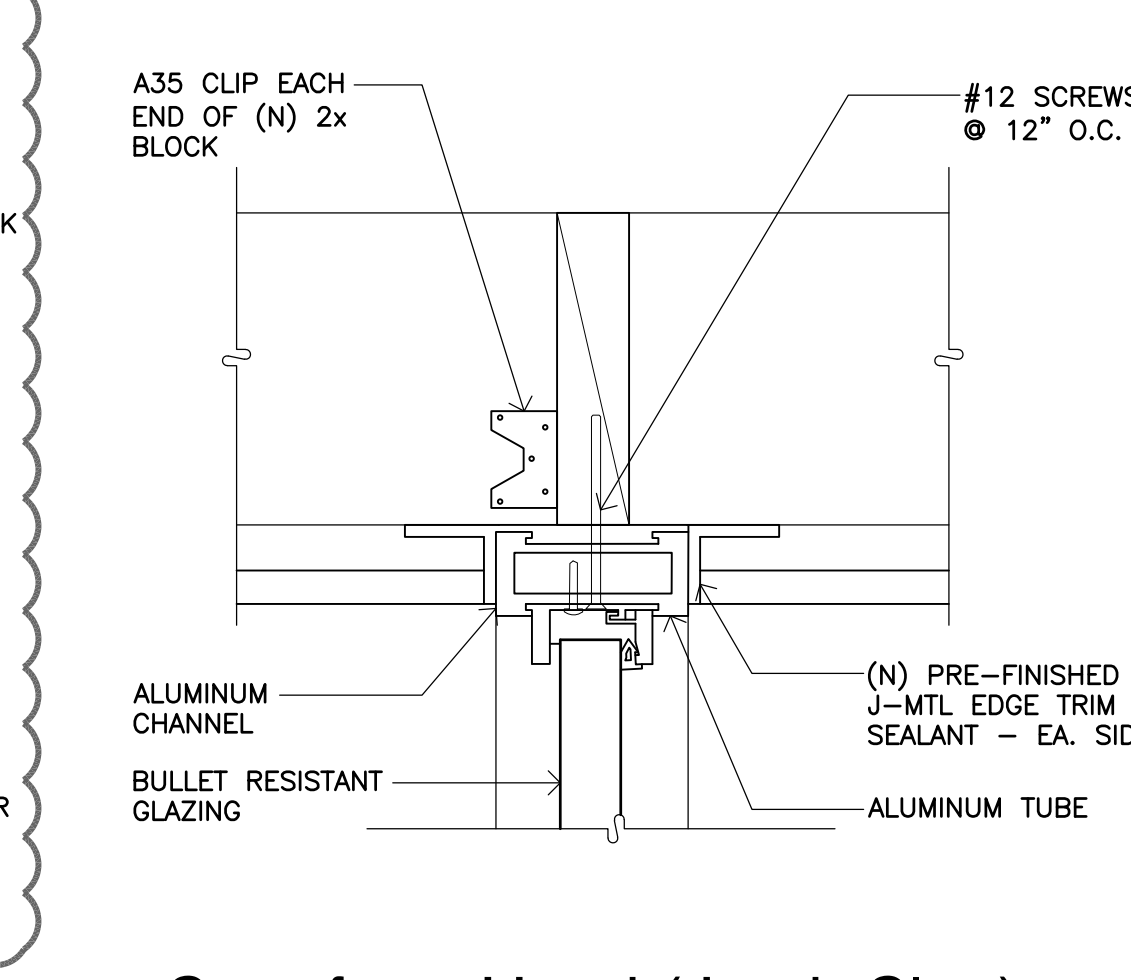
12 Storefront Wall Section
SCALE: 1" = 1'-0"



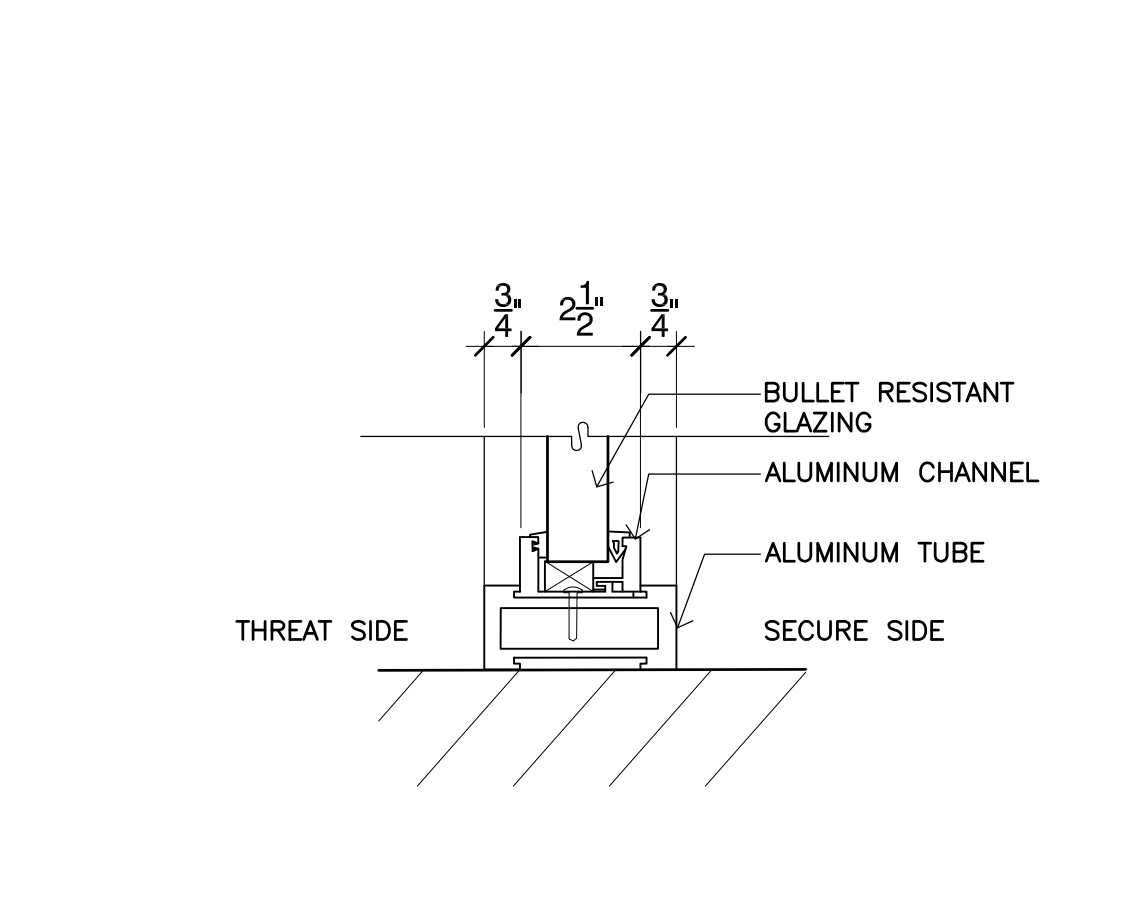
13 Wall Section
SCALE: 1" = 1'-0"



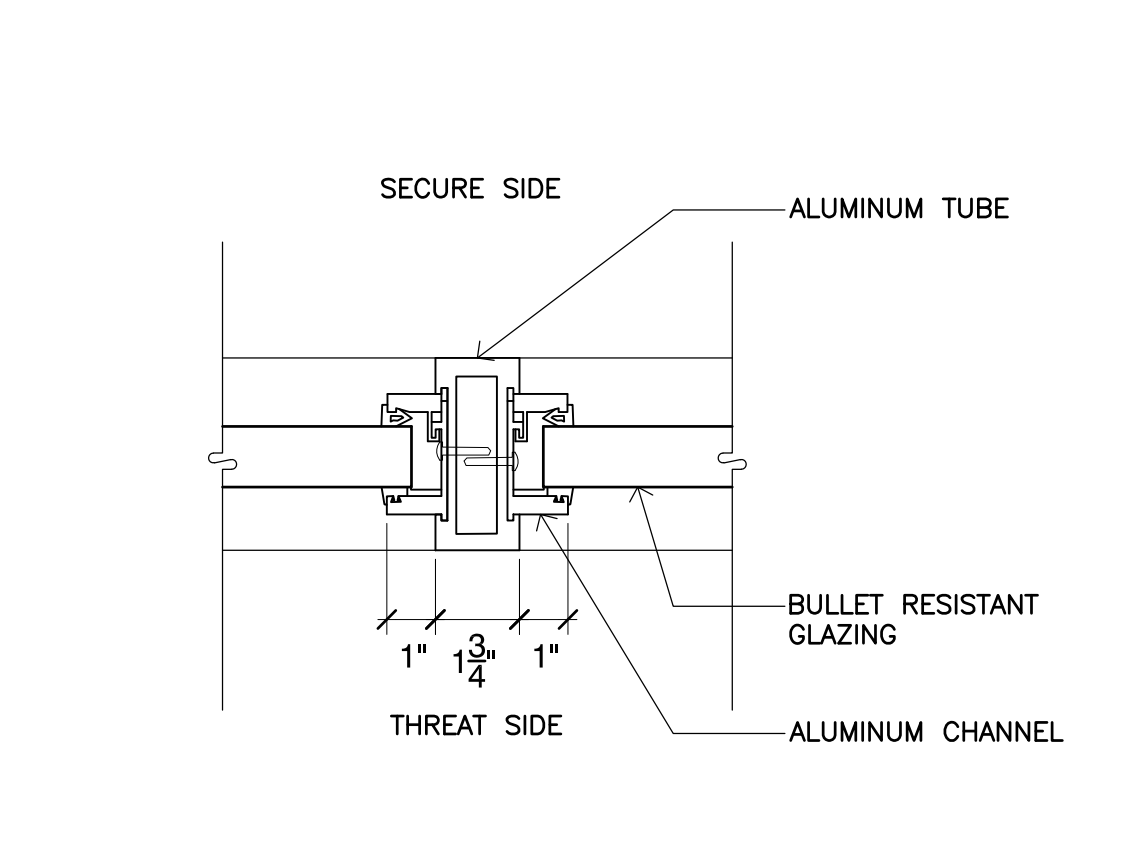
7 Door Sill & Transition Strip
SCALE: 3" = 1'-0"



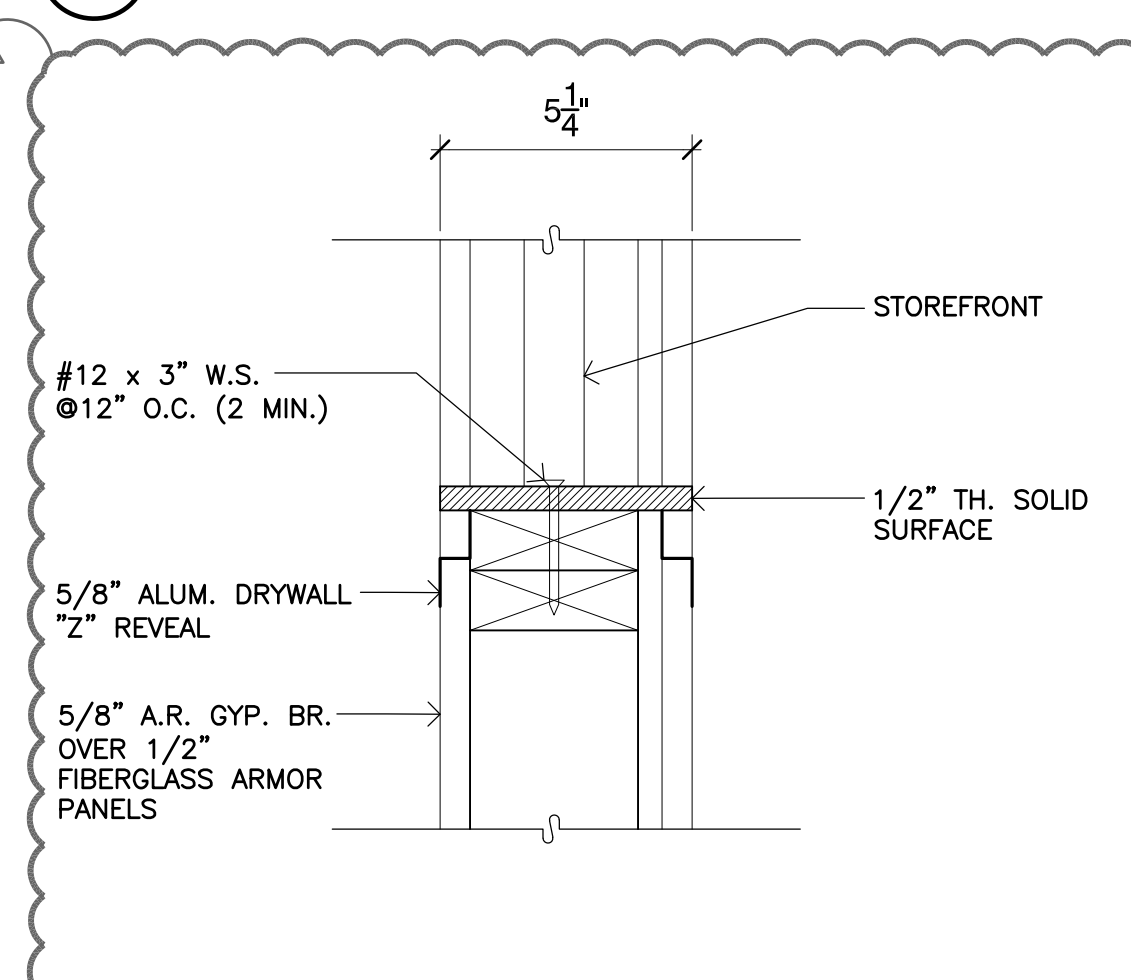
8 Storefront Head (Jamb Sim.)
SCALE: 3" = 1'-0"



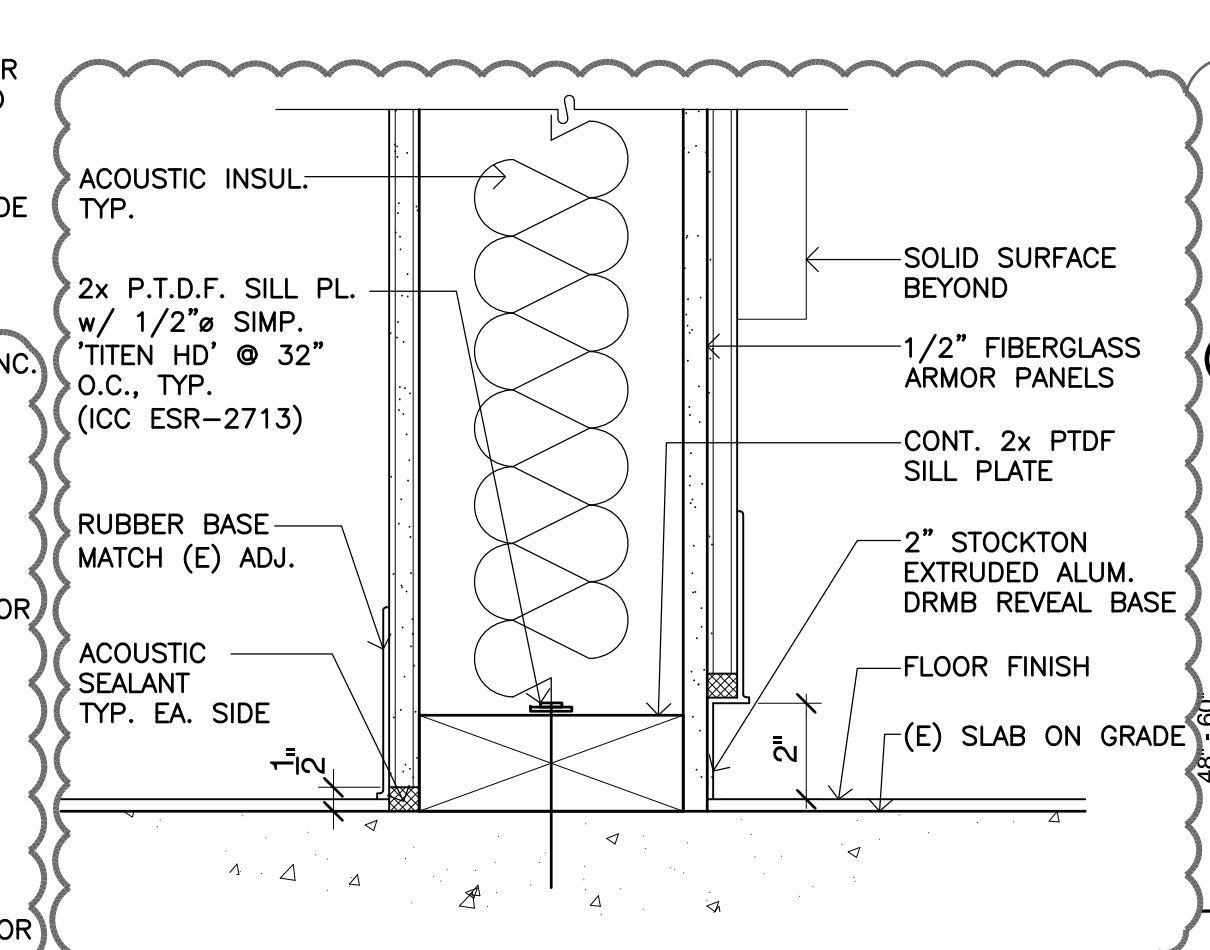
9 Storefront Sill
SCALE: 3" = 1'-0"



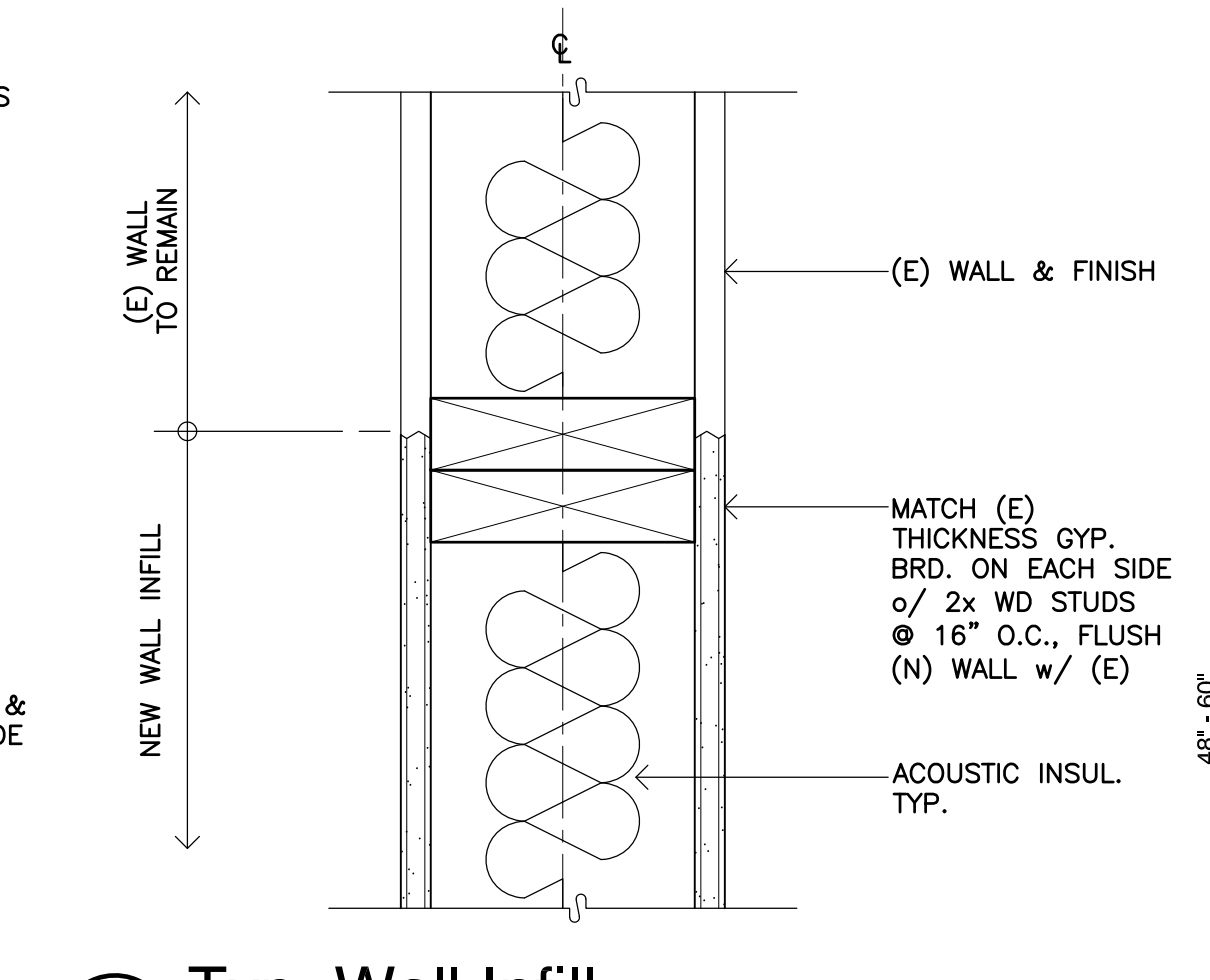
10 Storefront Mullion
SCALE: 3" = 1'-0"



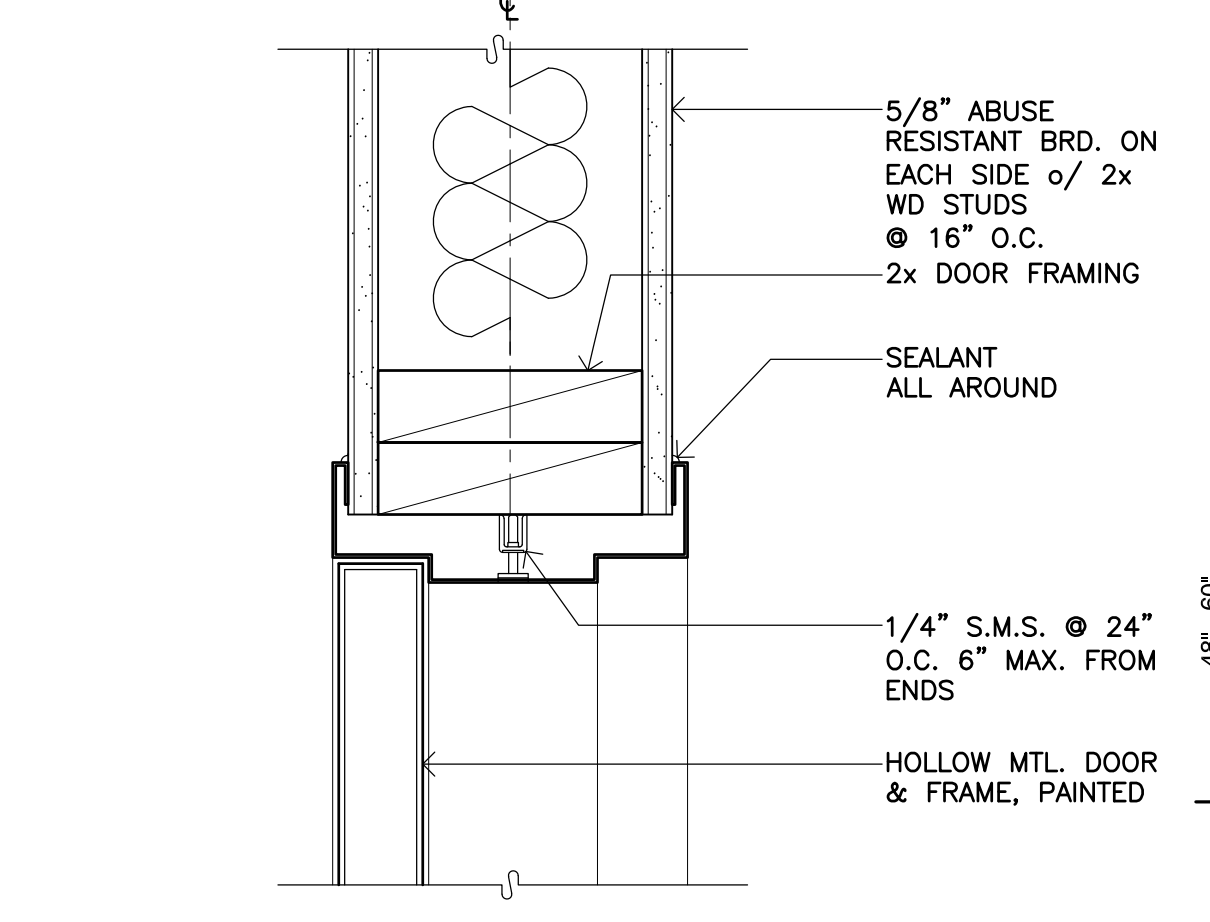
11 Storefront Wall Section
SCALE: 3" = 1'-0"



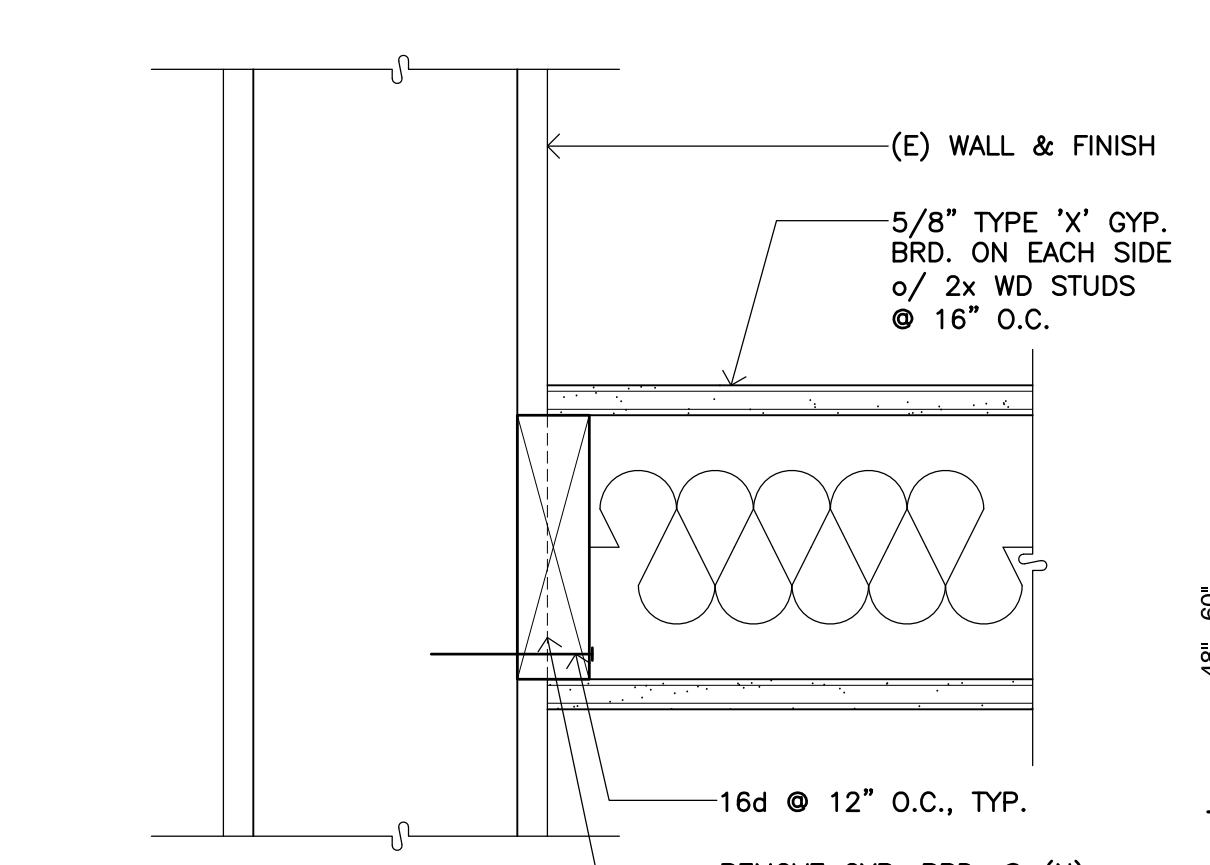
2 Non-bearing Interior Wall to Conc.
SCALE: 3" = 1'-0"



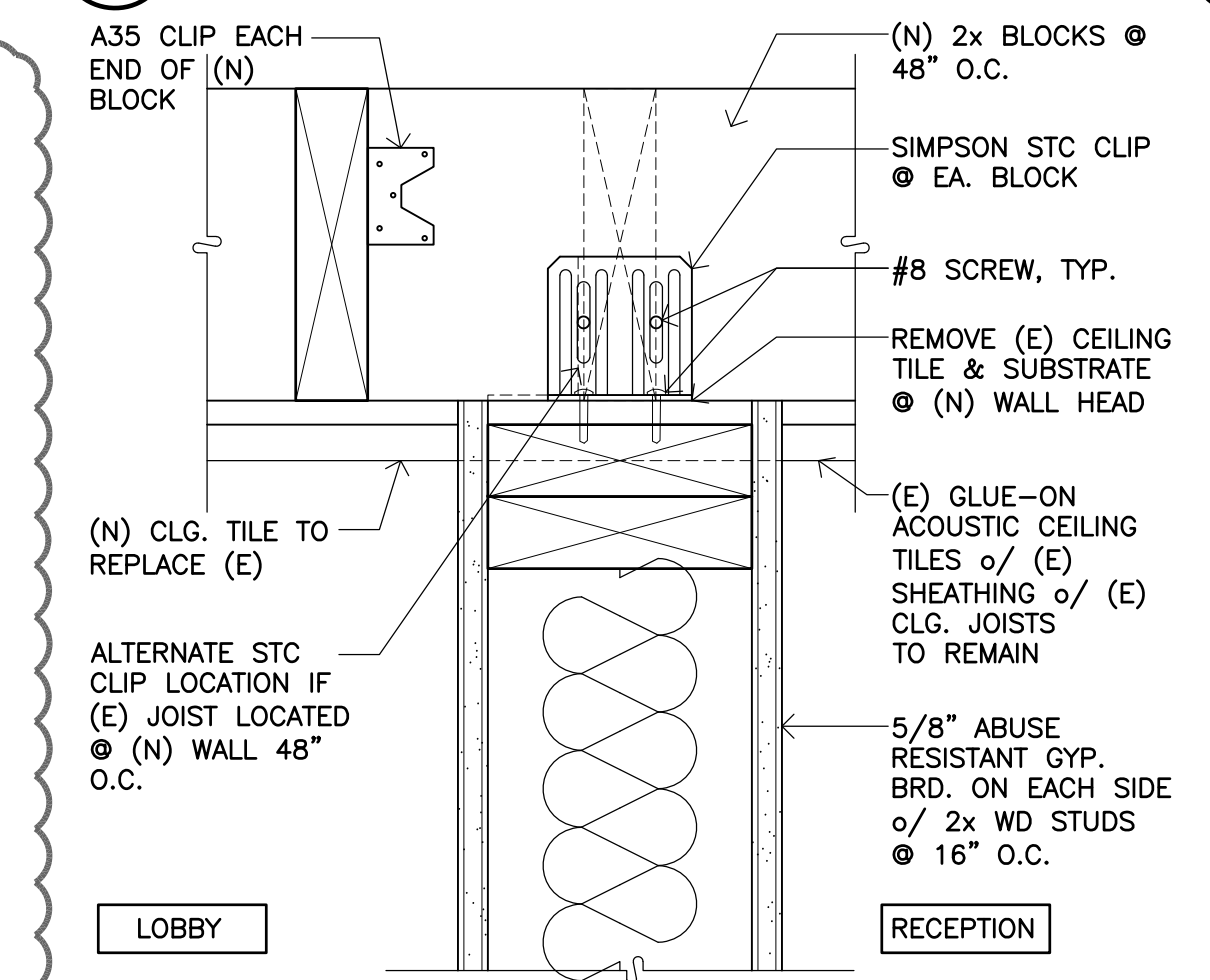
3 Typ. Wall Infill
SCALE: 3" = 1'-0"



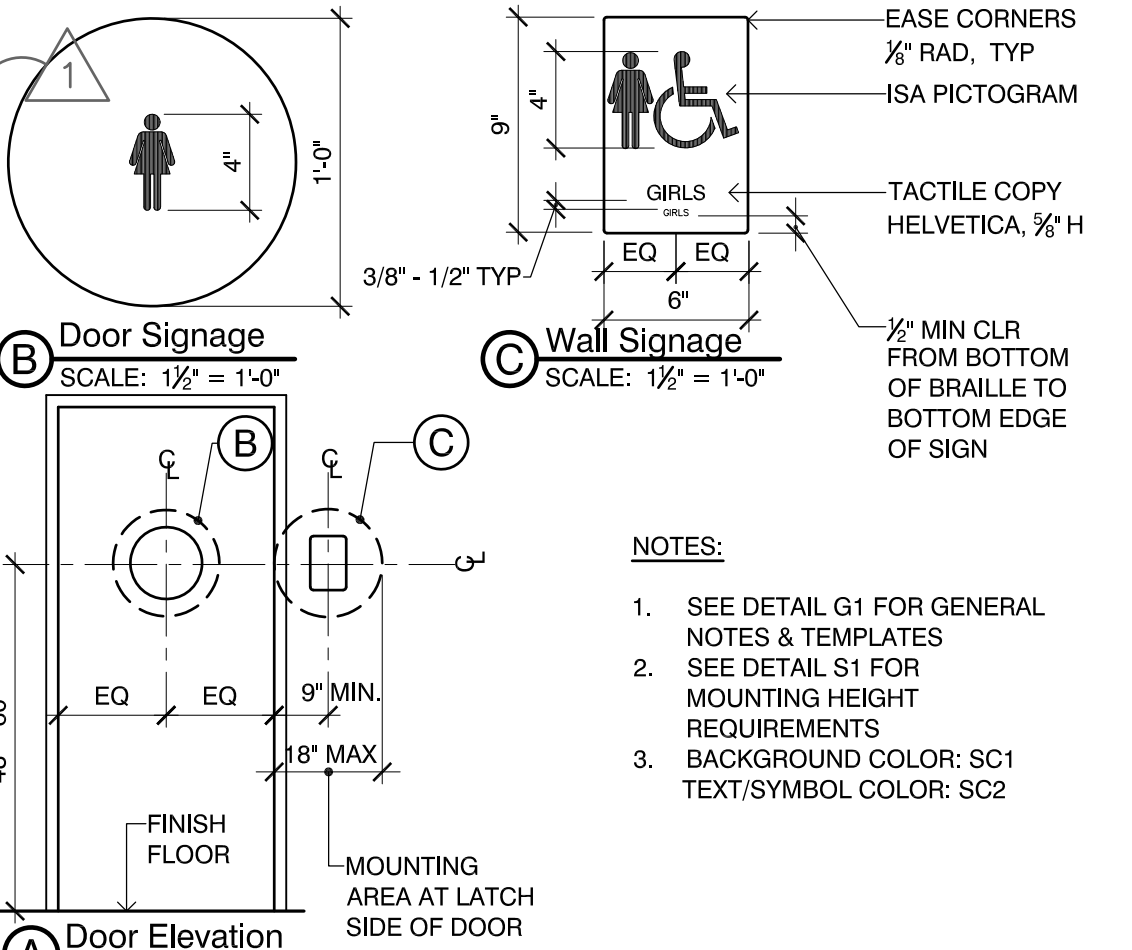
4 Head at Interior Door (Jamb Sim.)
SCALE: 3" = 1'-0"



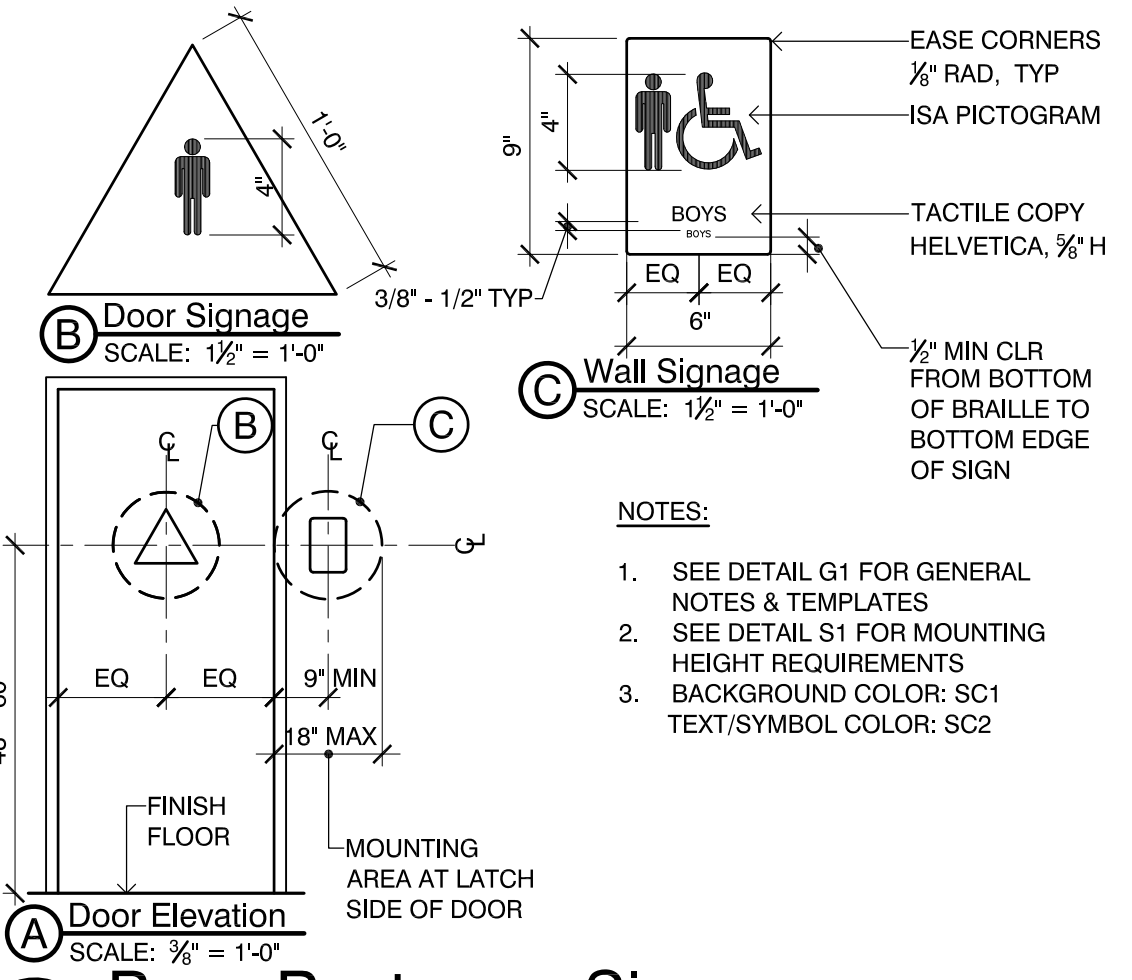
5 Wall Detail
SCALE: 3" = 1'-0"



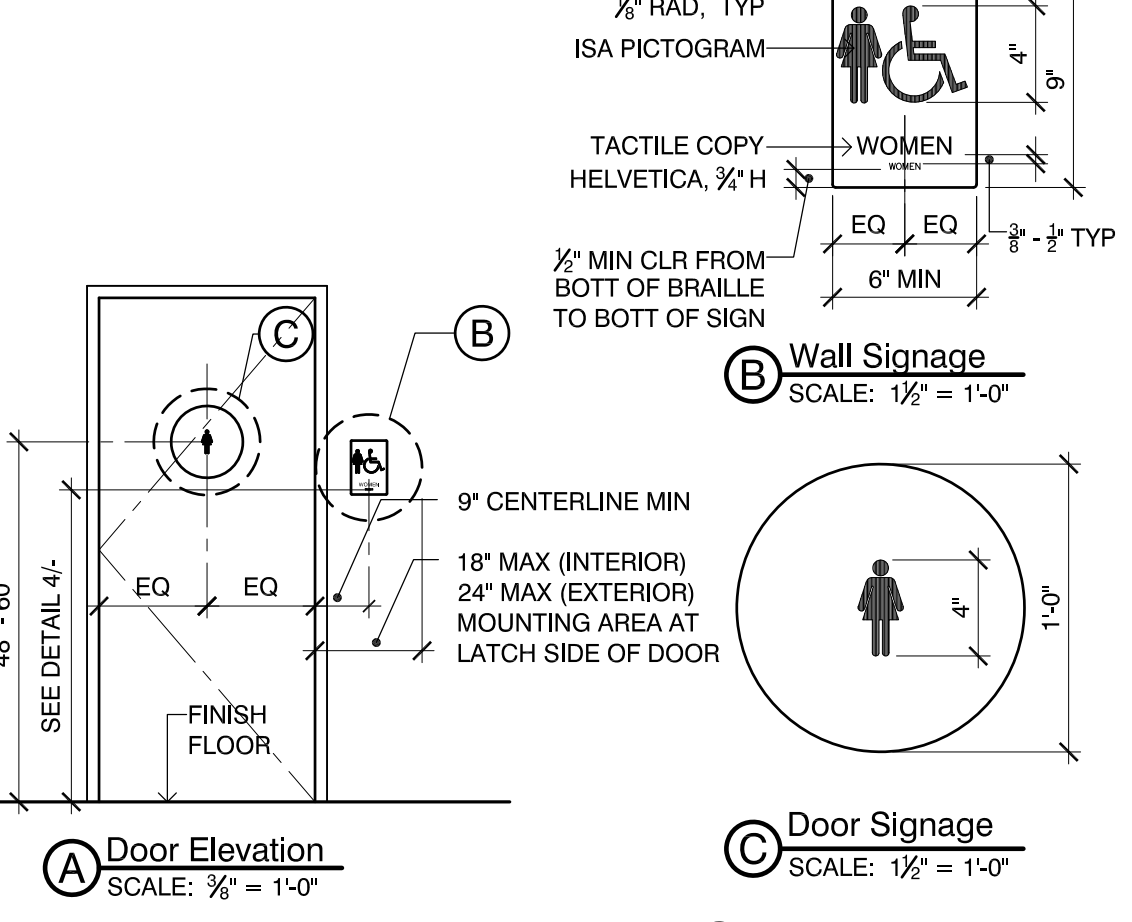
6 Wall Detail
SCALE: 3" = 1'-0"



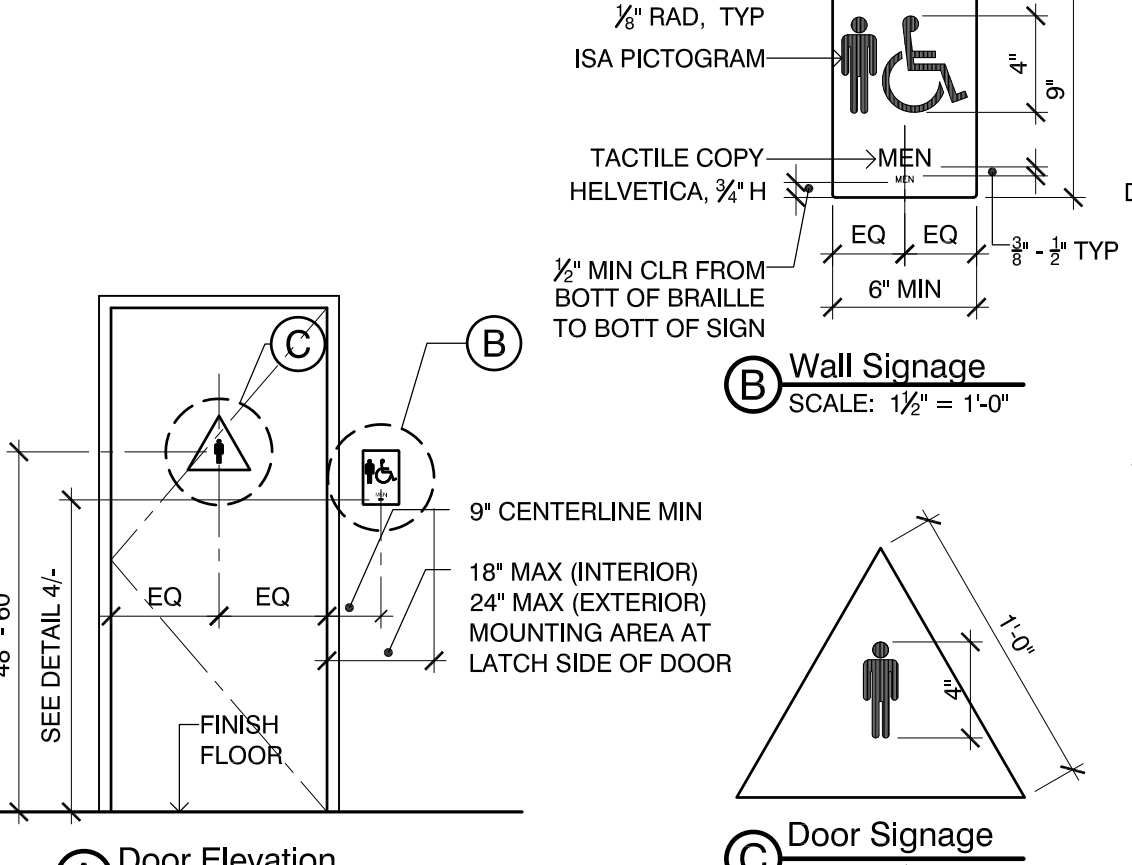
2 Non-bearing Interior Wall to Conc.
SCALE: 3" = 1'-0"



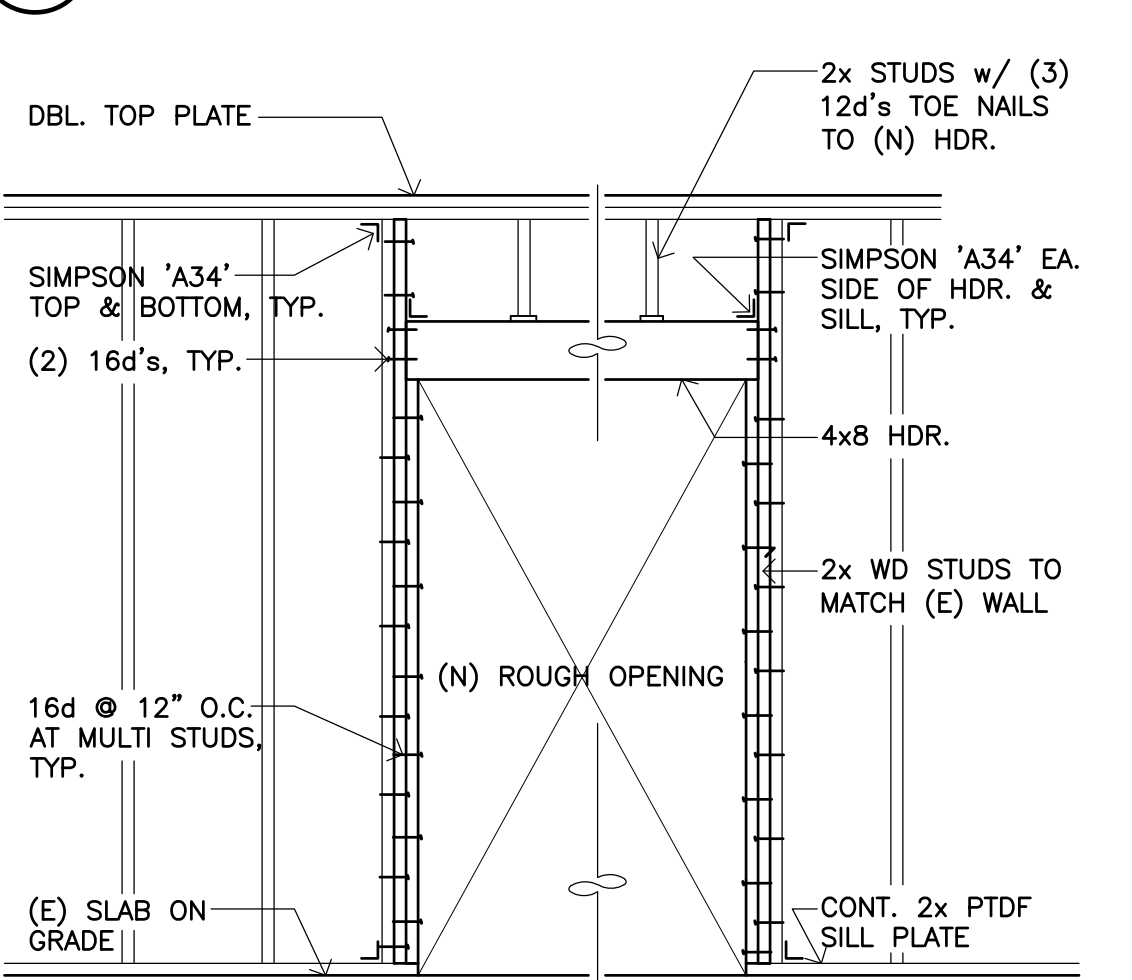
3 Typ. Wall Infill
SCALE: 3" = 1'-0"



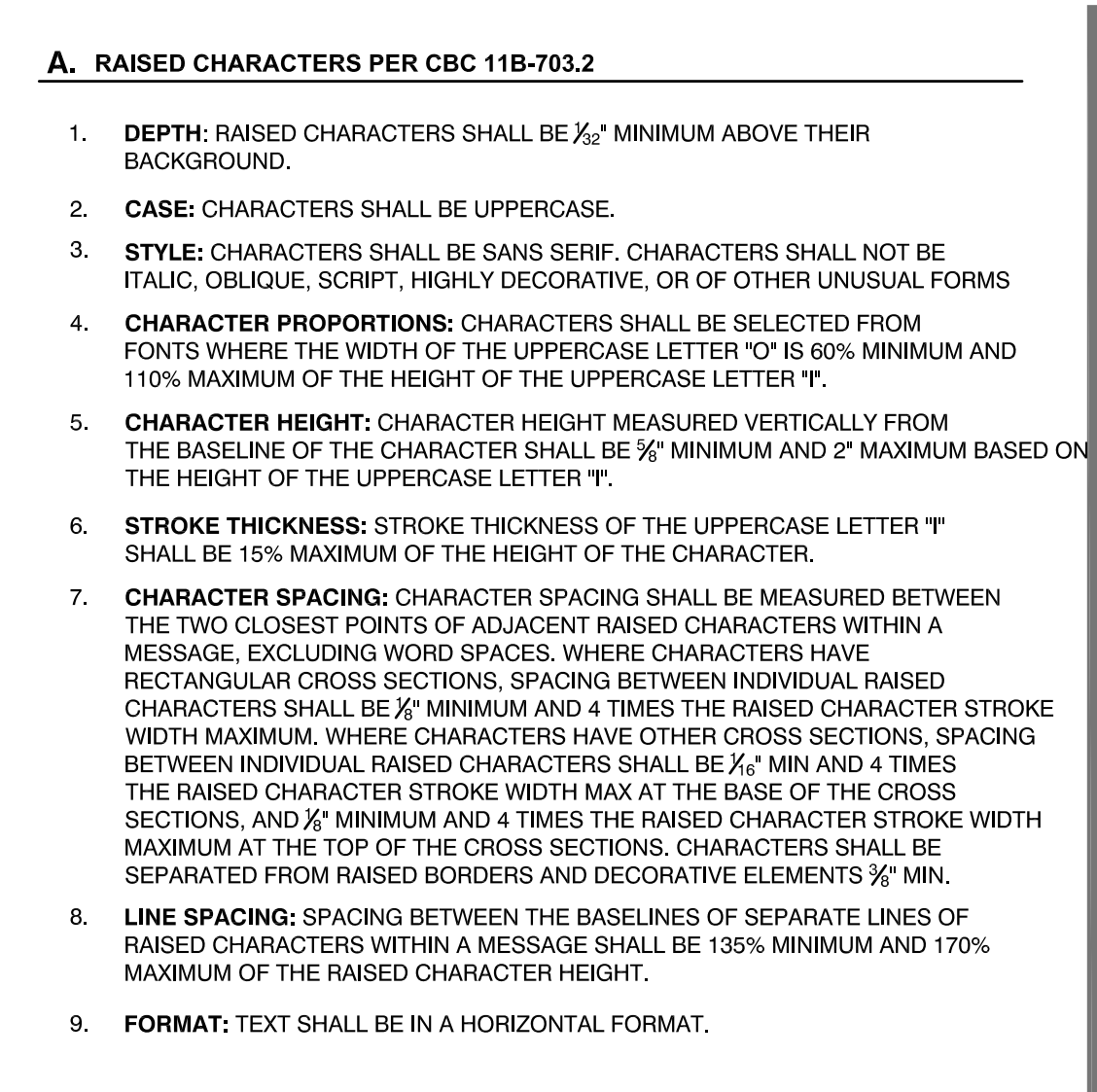
4 Head at Interior Door (Jamb Sim.)
SCALE: 3" = 1'-0"



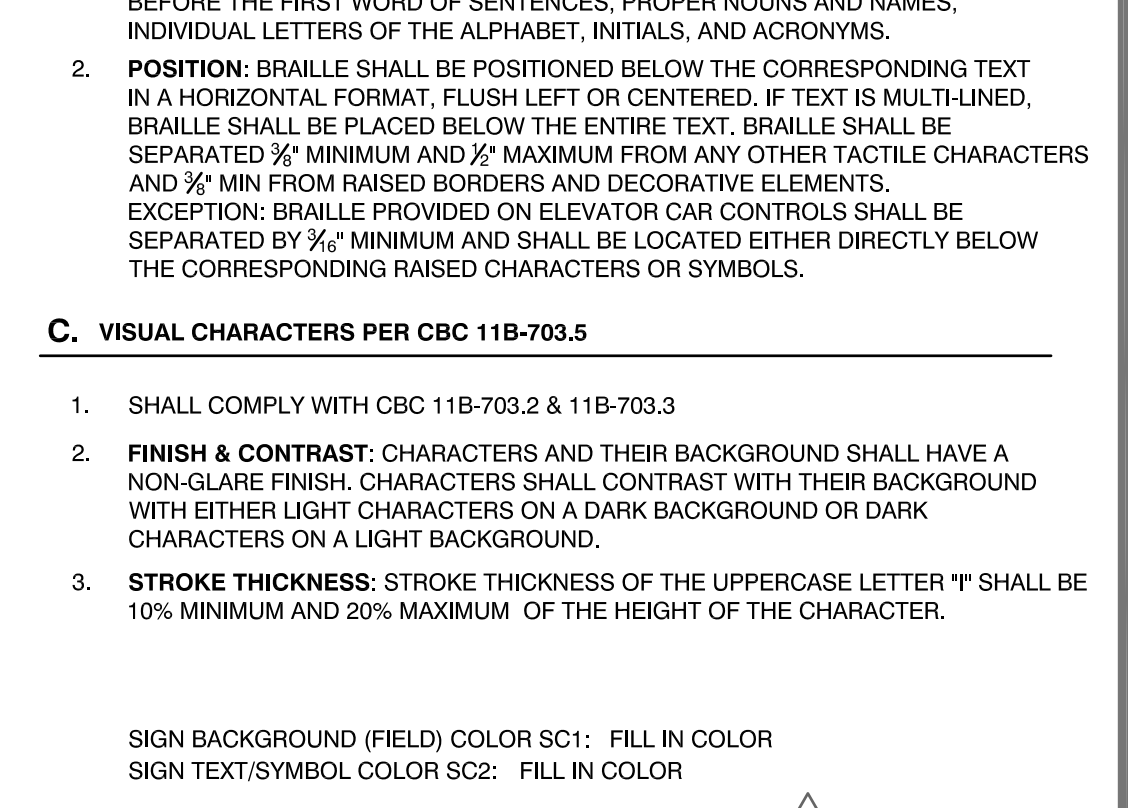
5 Wall Detail
SCALE: 3" = 1'-0"



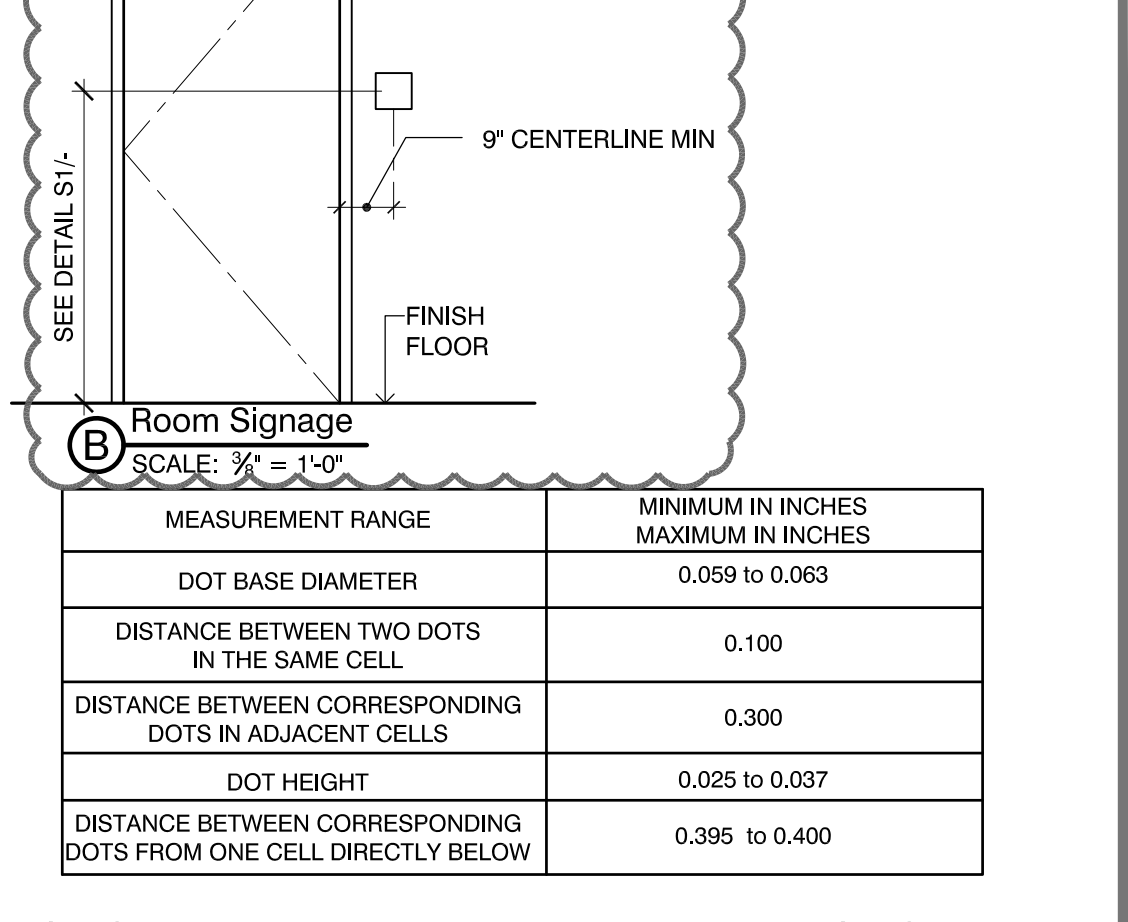
6 Wall Detail
SCALE: 3" = 1'-0"



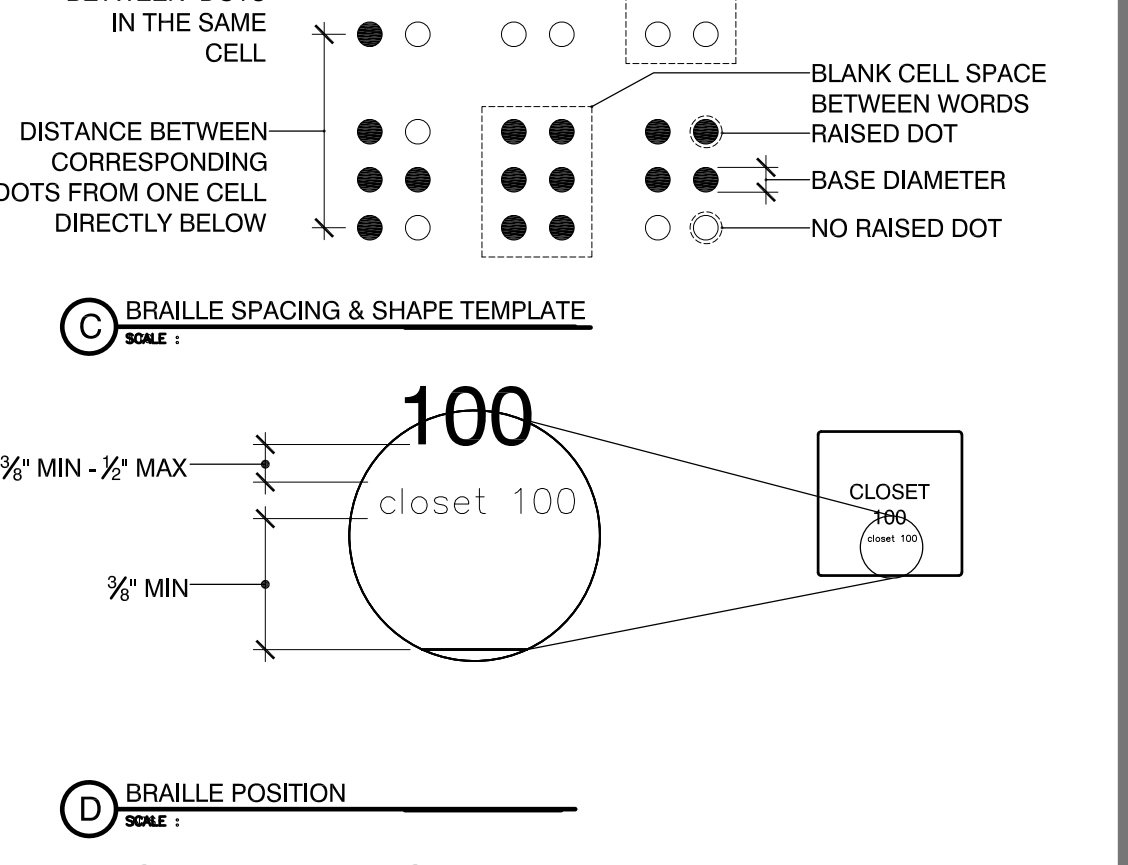
S2 Girls Restroom Signage
SCALE: AS NOTED



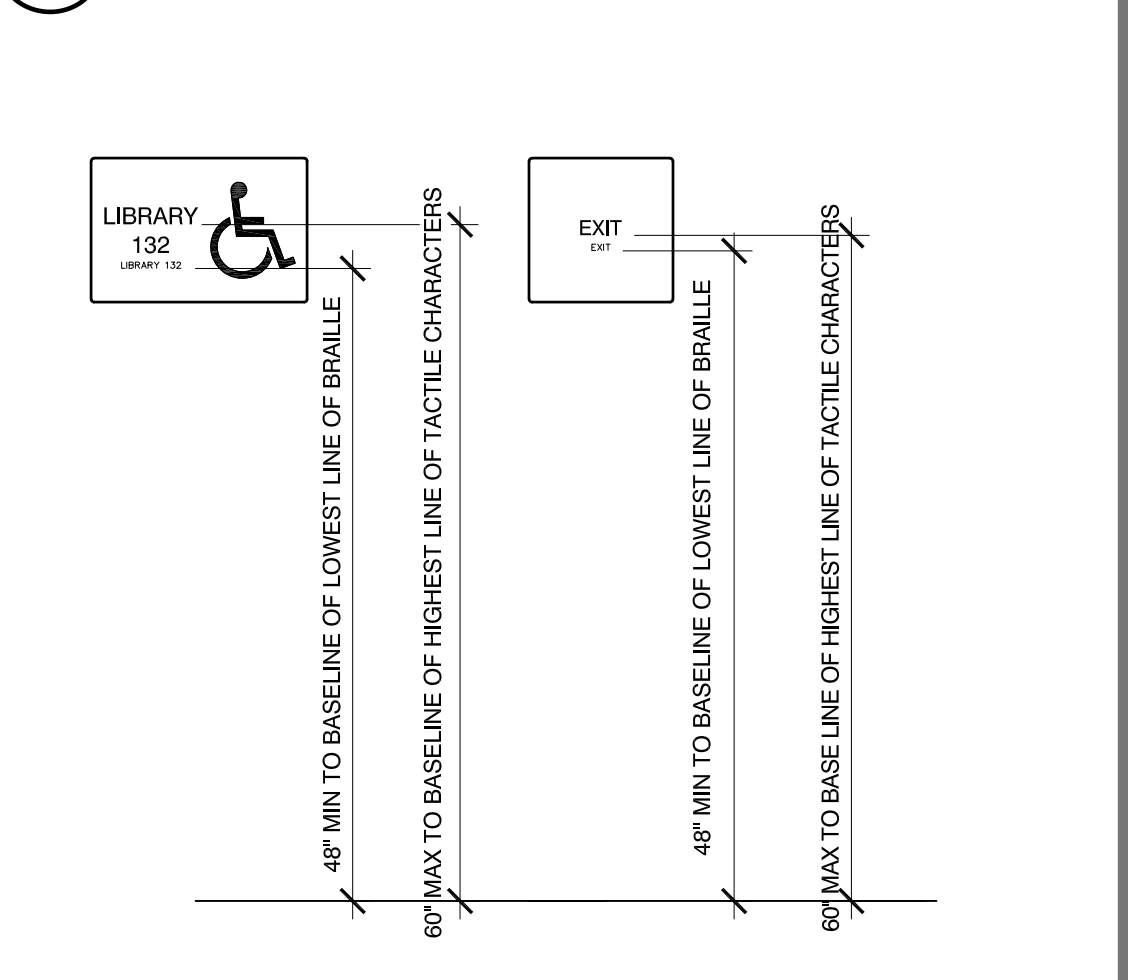
S3 Boys Restroom Signage
SCALE: AS NOTED



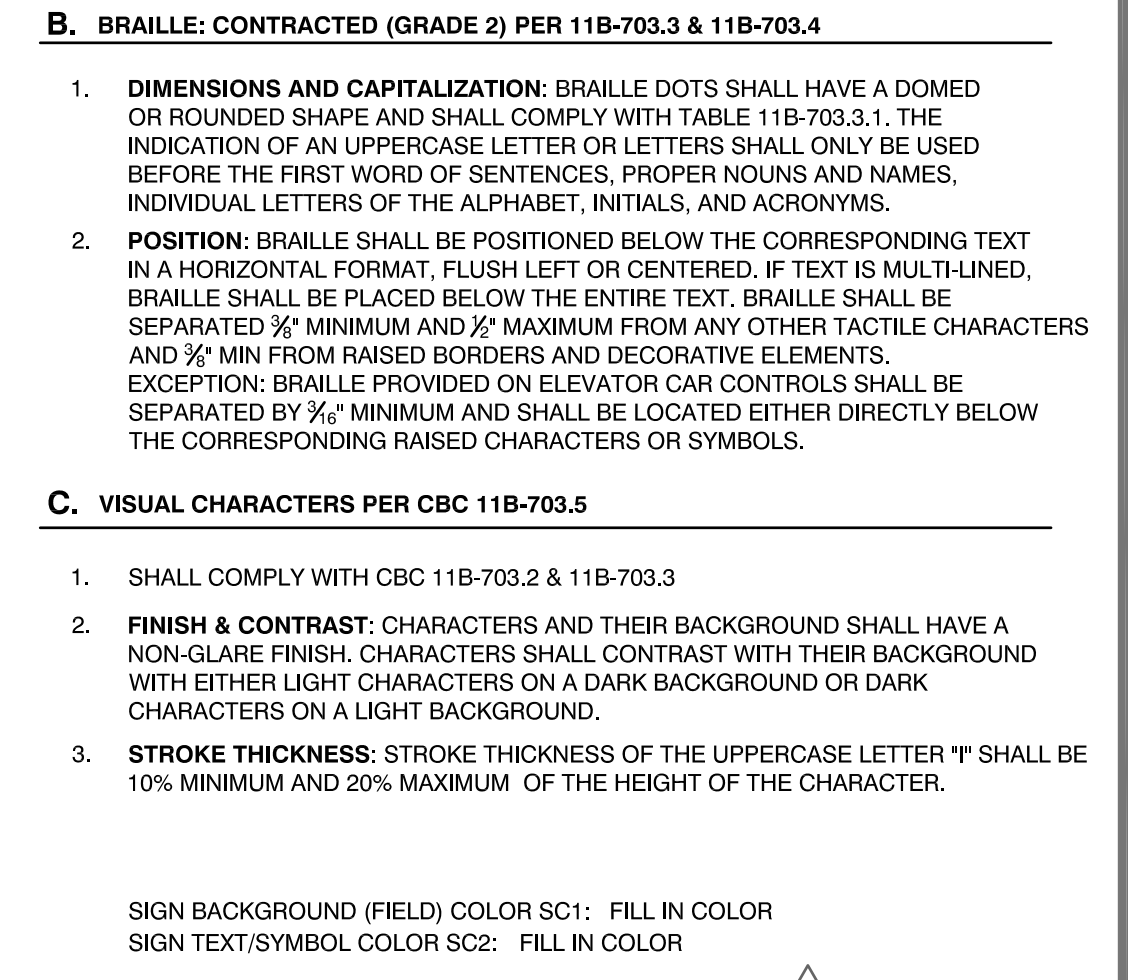
S4 Womens Restroom Signage
SCALE: AS NOTED



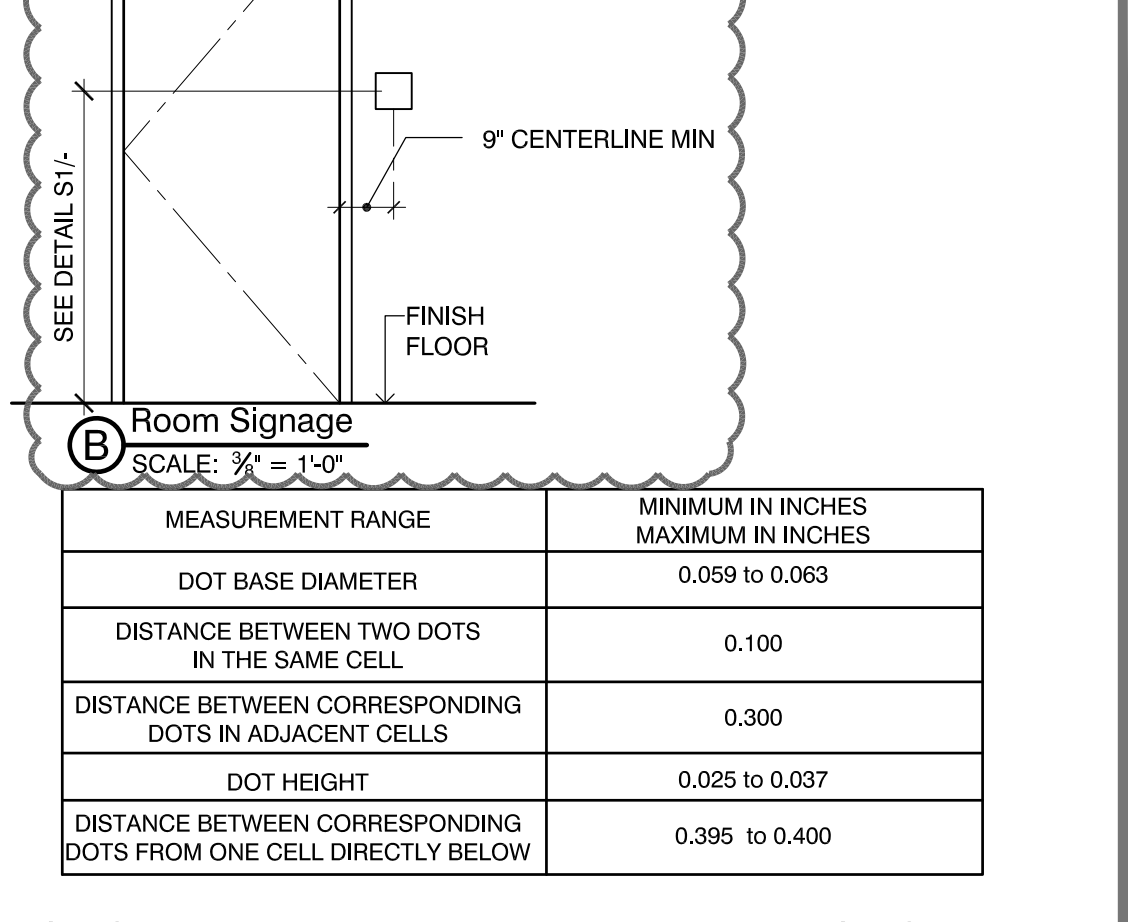
S5 Mens Restroom Signage
SCALE: AS NOTED



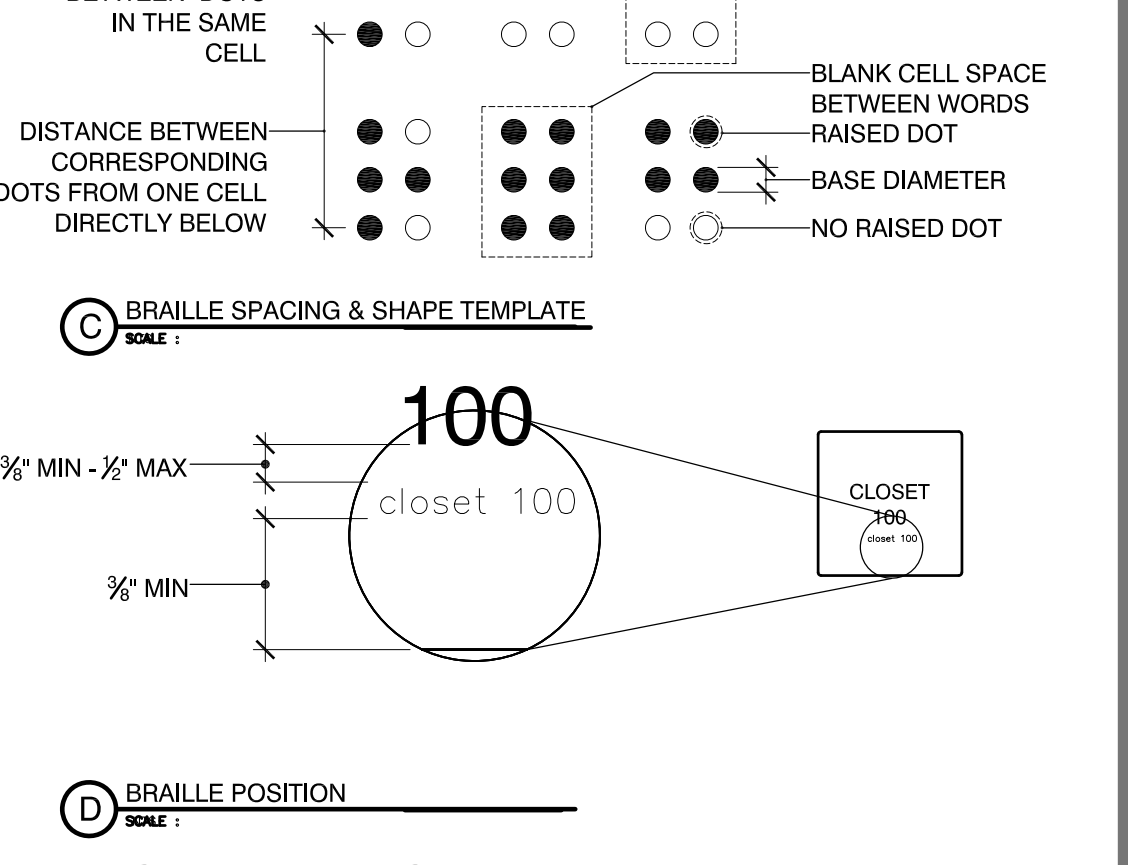
S1 Typ Mounting Hgt. Requirements
SCALE: AS NOTED



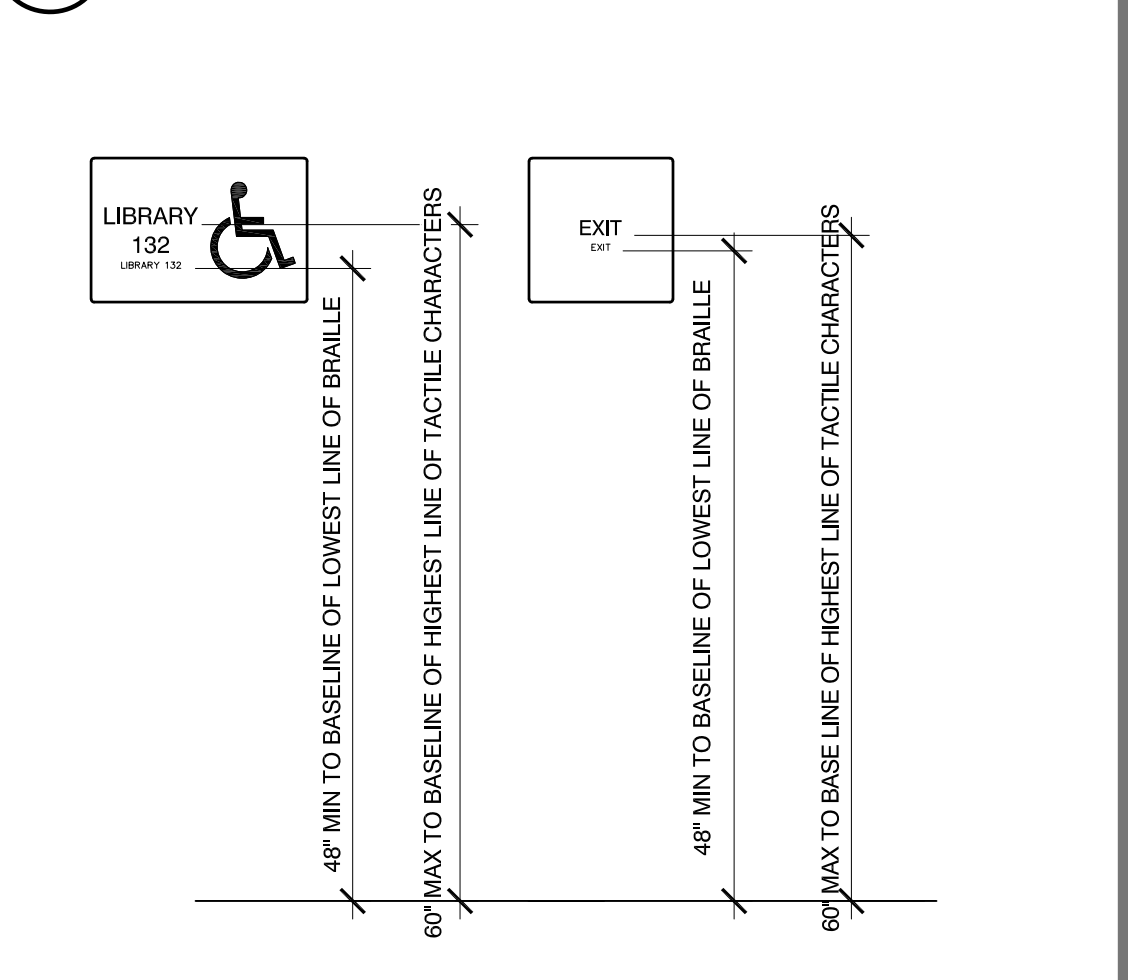
G1 Signage General Notes & Templates
SCALE: NONE



G2 Braille Spacing & Shape Template
SCALE: NONE



G3 Braille Position
SCALE: NONE



G4 Signage General Notes & Templates
SCALE: NONE

OXNARD UNION HIGH SCHOOL DISTRICT
ADOLFO CAMARILLO HIGH SCHOOL
4660 MISSION OAKS BLVD, CAMARILLO, CA 93012

SITE SECURITY IMPROVEMENTS

KRUGER BENSON ZIEMER ARCHITECTS, INC.
199 FELDFORD ST, SUITE 100A VENTURA, CA 93001
TELEPHONE (805) 650-1033

TODD A. JESPERSEN, AIA
PRINCIPAL/ARCHITECT

JONATHAN D. LEE
ARCHITECTURAL ASSISTANT

All ideas, design arrangements and plans indicated or represented by this drawing are owned by and are the property of KrugerBensonZiemer, AIA, architects, and were created, edited and developed for use on, and in connection with, the specified project. None of such ideas, designs, arrangements or plans shall be used by or disclosed to any person, firm or corporation for any purpose whatsoever without the written permission of KrugerBensonZiemer.

ARCHITECTS
STAMP & SIGNATURE

REVISIONS

REVISION	DATE	DESCRIPTION	BY
REVISIONS.01	8/30/19	TJ	

DRAWN: PP/JL
CHECKED: TJ
DATE: 1/19/2018
JOB NO.: 18014

SHEET: DETAILS
TITLE:

SHEET

A-800