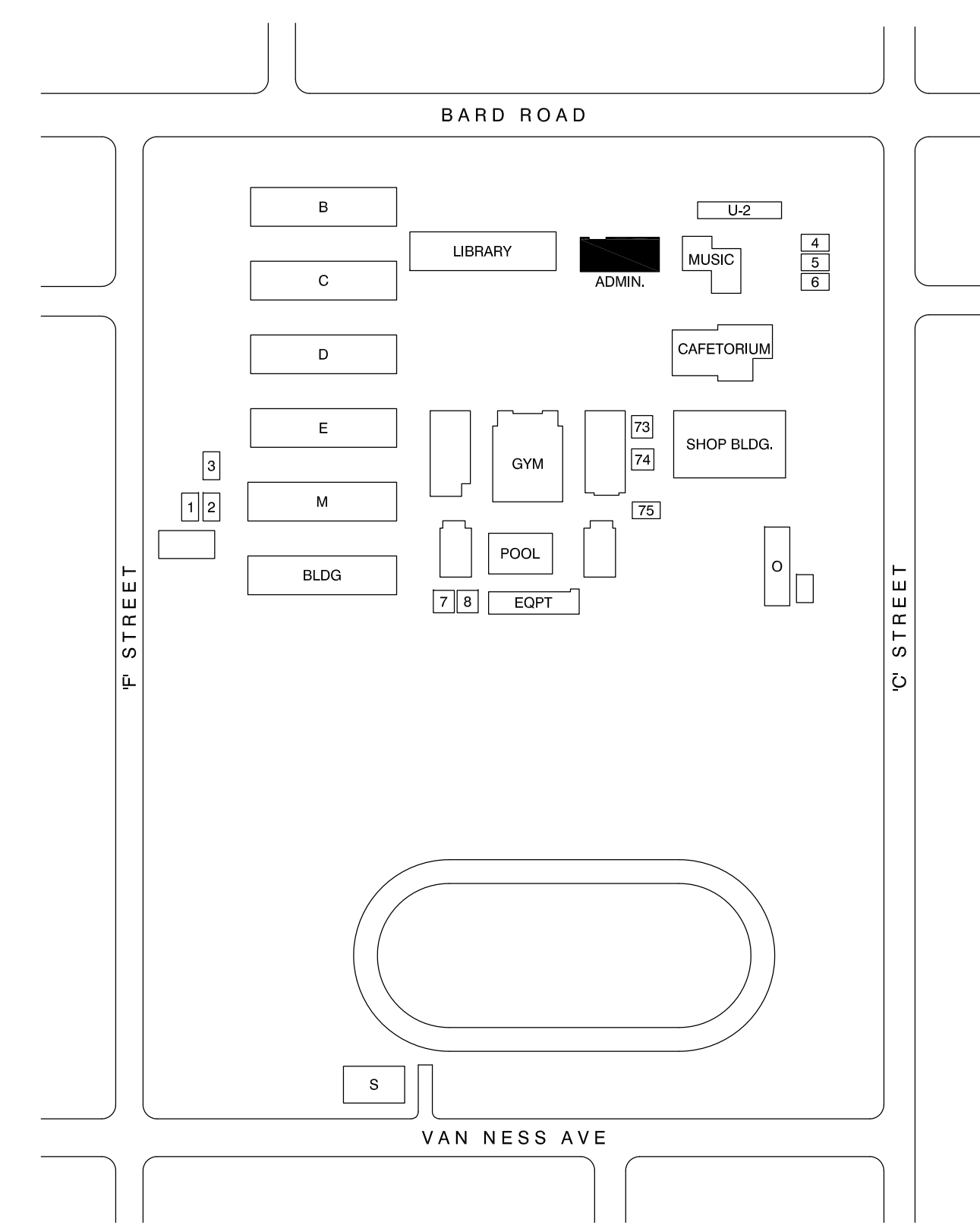
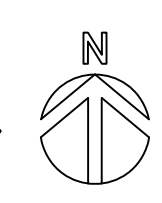
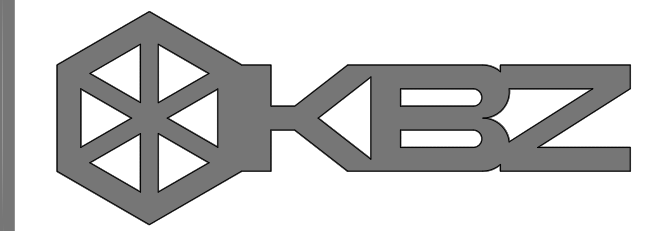


ENLARGED DEMO FLOOR PLAN  
 1 A-201  
 ENLARGED NEW FLOOR PLAN  
 2 A-201

1 BUILDING 'K' FLOOR PLAN  
 SCALE : 1/8" = 1'-0"



KEY PLAN



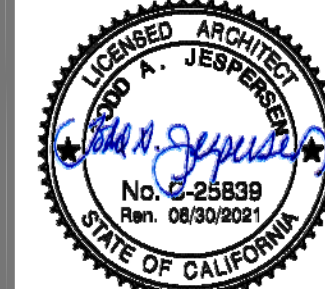
KRUGER BENSEN ZIEMER ARCHITECTS, INC. AIA  
 199 FIELDFORD ST. SUITE 100A VENTURA CA 93001  
 TELEPHONE (805) 650-1033

TODD A. JESPERSEN, AIA  
 PRINCIPAL/ARCHITECT

JONATHAN D. LEE  
 ARCHITECTURAL ASSISTANT

All ideas, design arrangements and plans indicated or represented by this drawing are owned by and are the property of KrugerBensenZiemer, AIA, architects, and were created, edited and developed for use on, and in connection with, the specific project. None of such ideas, designs, arrangements or plans shall be used by or disclosed to any person, firm or corporation for any purpose whatsoever without the written permission of KrugerBensenZiemer.

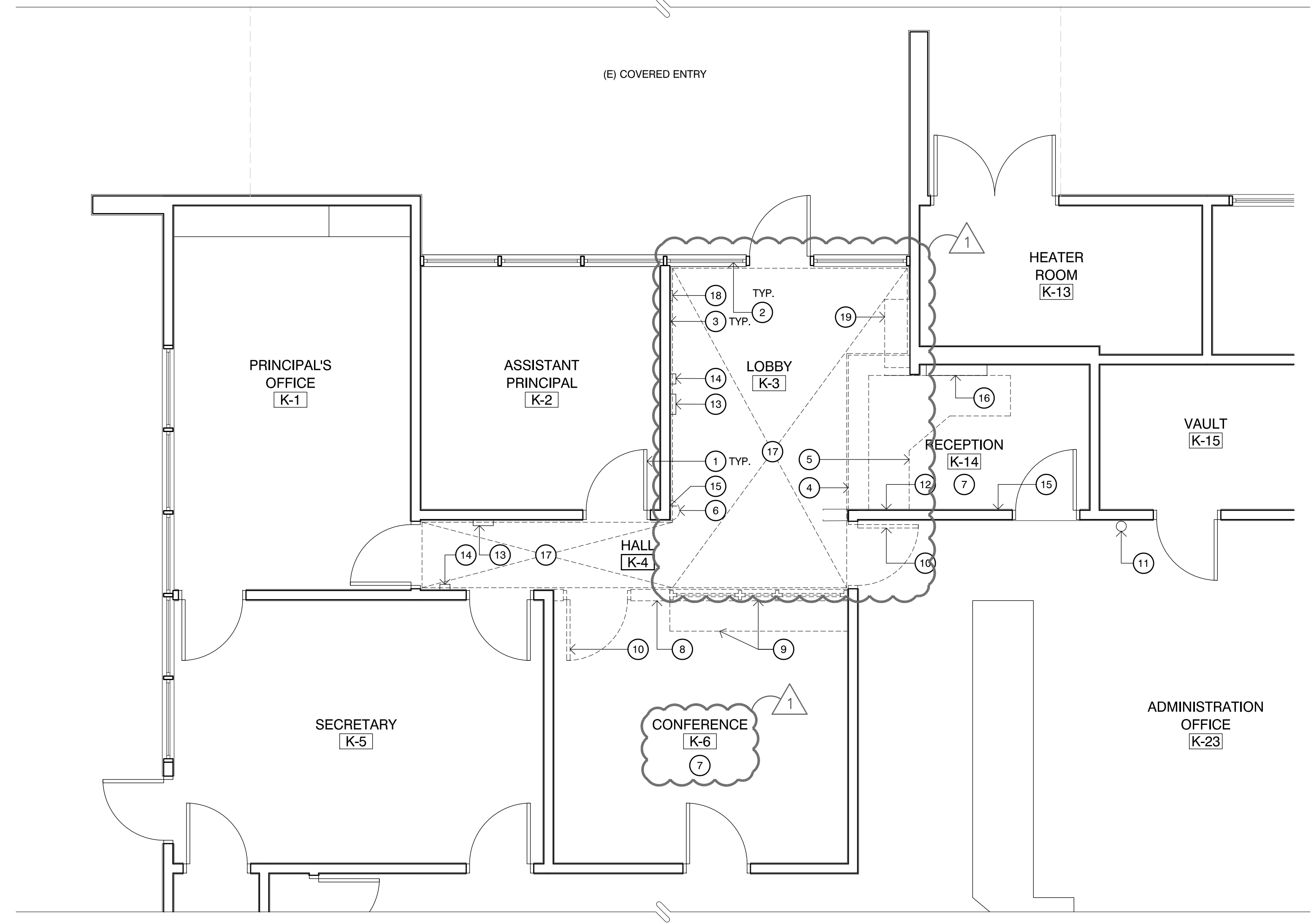
ARCHITECTS  
 STAMP & SIGNATURE



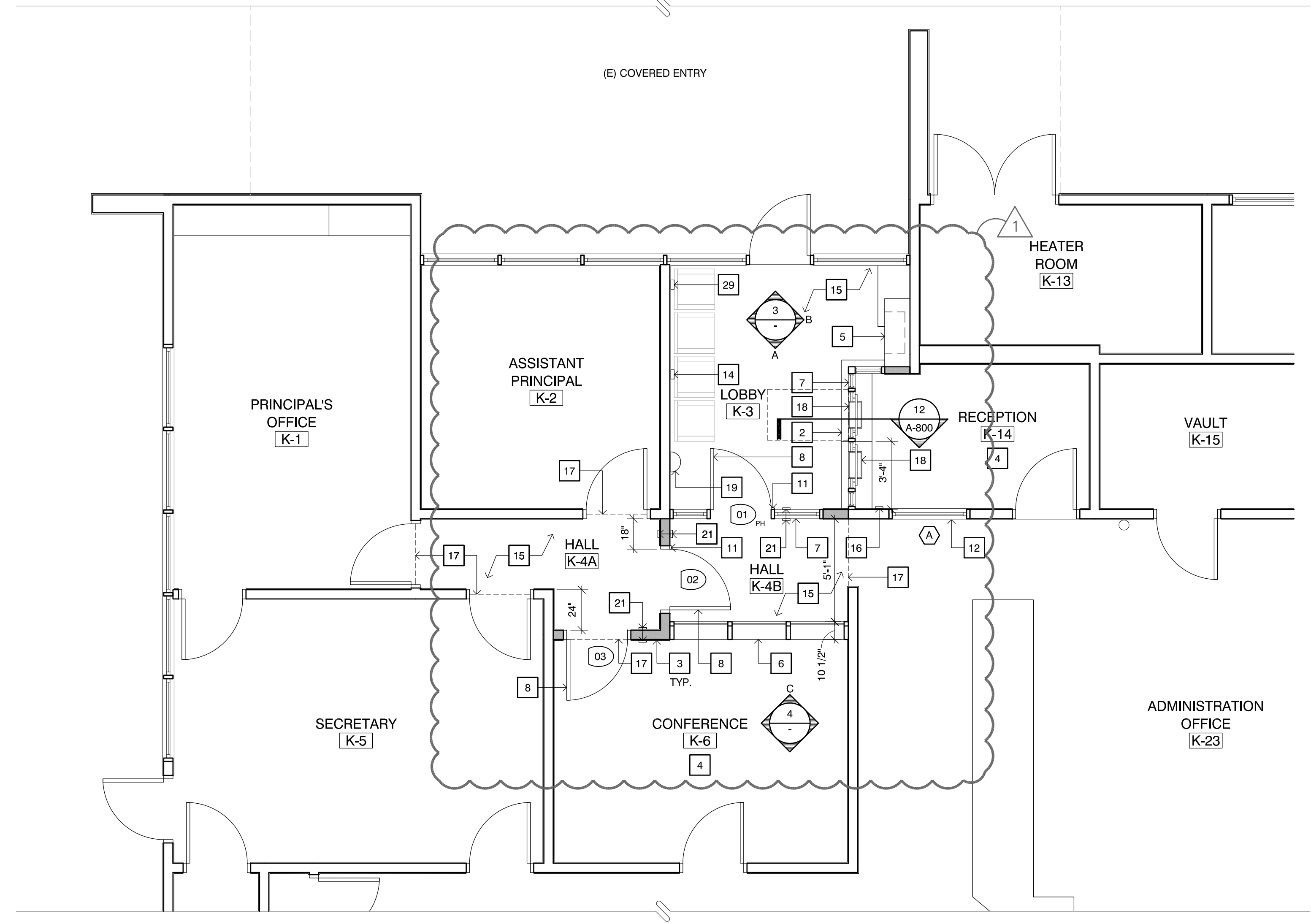
△	-	-/-	XX
△	-	-/-	XX
△	-	-/-	XX
△	-	-/-	XX
△	REVISIONS.01	9/11/19	TJ
REVISION	DESCRIPTION	DATE	BY

DRAWN JL  
 CHECKED TJ  
 DATE 1/19/2019  
 JOB. NO. 18016

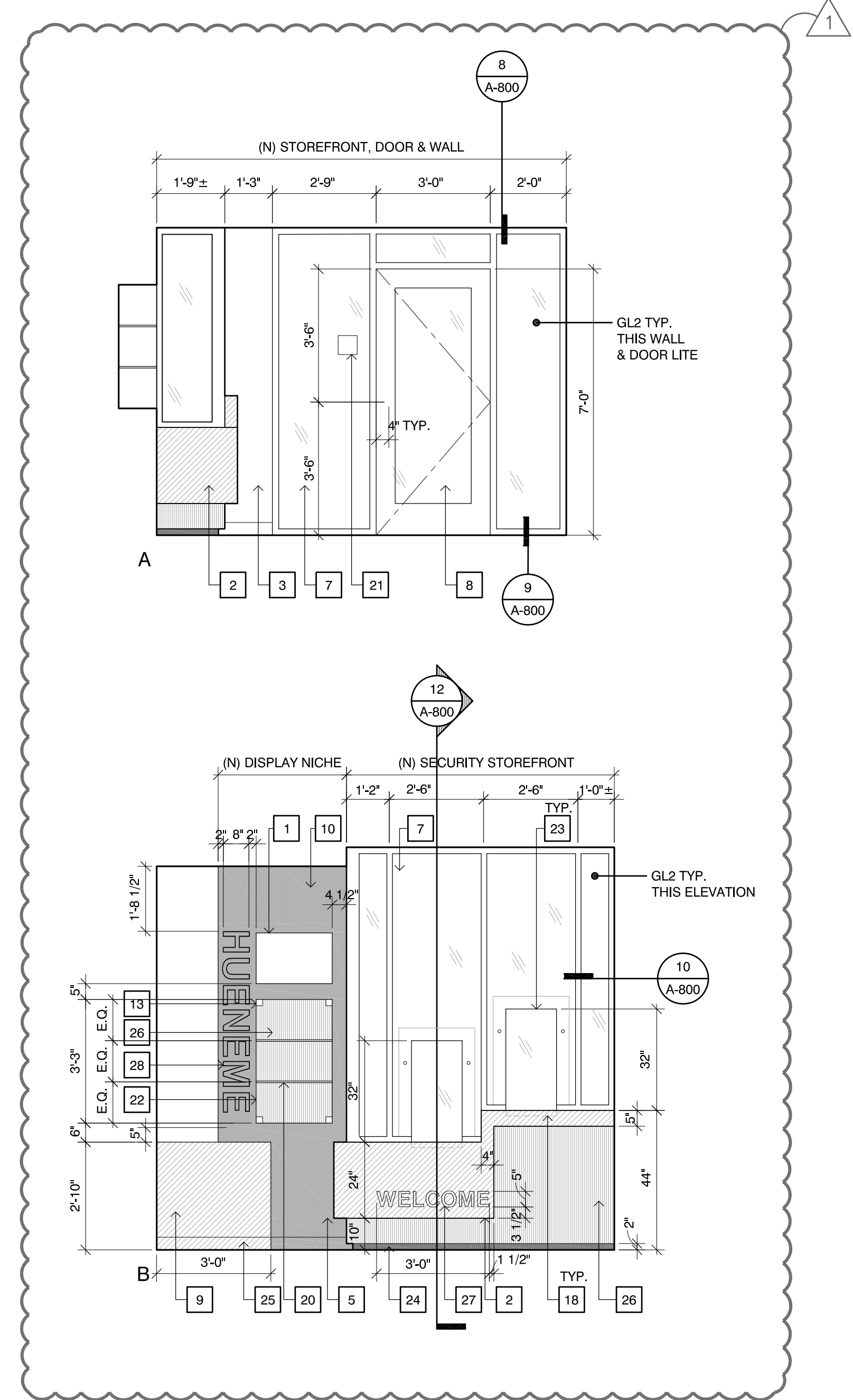
SHEET BUILDING 'K' FLOOR PLAN  
 TITLE



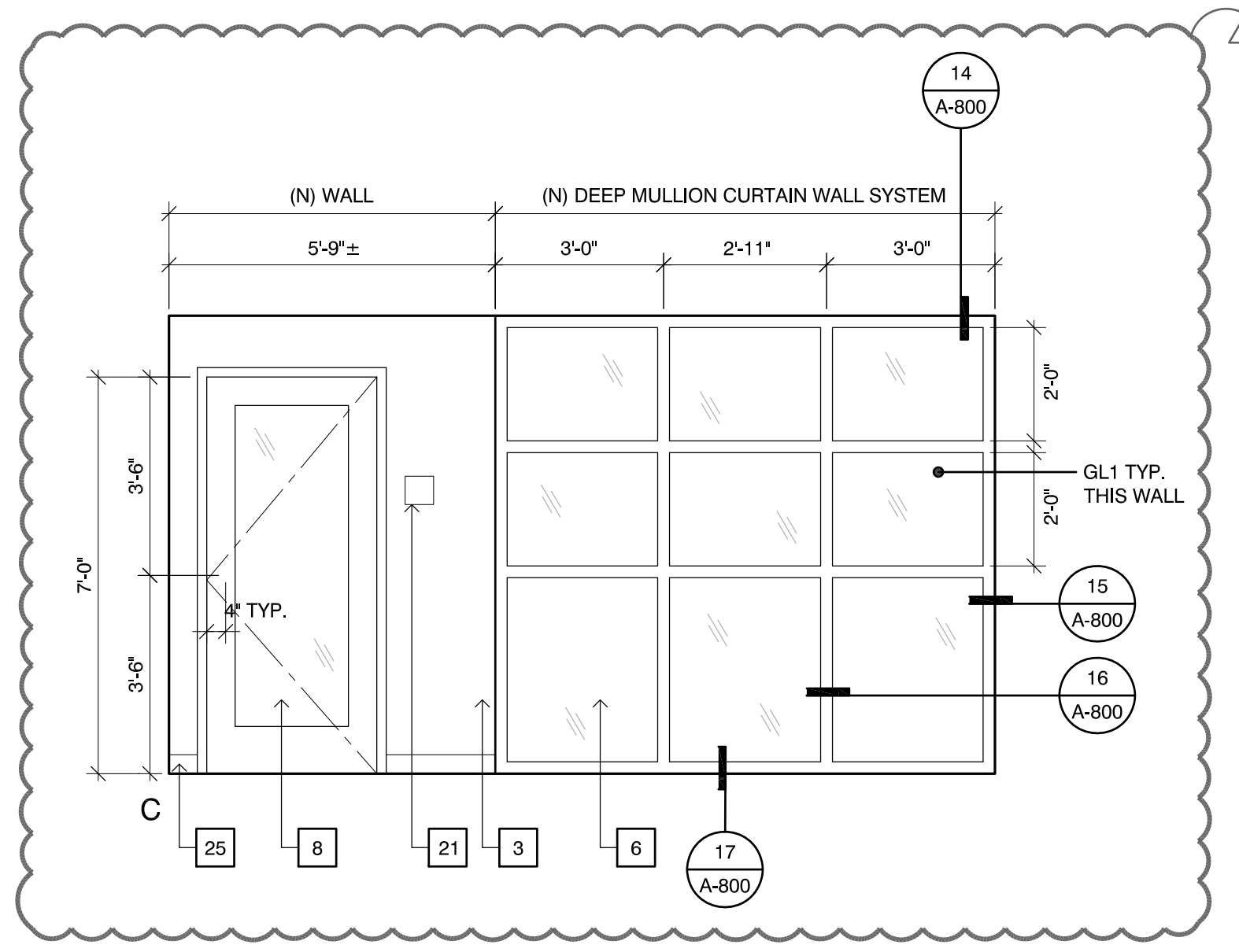
1 ENLARGED DEMO FLOOR PLAN  
 SCALE: 1/4" = 1'-0"



2 ENLARGED NEW FLOOR PLAN  
 SCALE: 1/4" = 1'-0"



3 INTERIOR ELEVATIONS - LOBBY  
 SCALE: 3/8" = 1'-0"



4 INTERIOR ELEVATIONS - CONFERENCE  
 SCALE: 3/8" = 1'-0"

DEMO PLAN KEYNOTES

- 1 (E) DOOR TO REMAIN
- 2 (E) WINDOW TO REMAIN
- 3 (E) WALL TO REMAIN
- 4 DEMO (E) COUNTER
- 5 REMOVE (E) WORKSTATION
- 6 RELOCATE (E) HALF-DOME SAFETY MIRROR
- 7 REMOVE (E) CARPET & RUBBER BASE
- 8 DEMO (E) WALL
- 9 DEMO (E) WINDOW & STOREFRONT/COUNTER ASSEMBLY
- 10 DEMO (E) DOOR & FRAME
- 11 (E) FIRE EXTINGUISHER TO REMAIN
- 12 (E) WALL OUTLET TO REMAIN
- 13 (E) EMERGENCY LIGHTING TO REMAIN
- 14 UPDATE (E) FIRE ALARM STROBE TO HORN/STROBE
- 15 (E) LIGHT SWITCH TO REMAIN
- 16 (E) FIRE ALARM PANEL TO REMAIN
- 17 (E) REMOVE (E) VCT & BASE FOR (N) WORK
- 18 (E) PULL STATION TO REMAIN
- 19 REMOVE (E) CEILING AS REQ'D FOR (N) BLOCKING

NEW PLAN & INTERIOR ELEVATIONS KEYNOTES

- 1 (N) DATA/ELECT. OUTLET FOR LCD SCREEN
- 2 (N) HI-LO SOLID SURFACE COUNTER, RETURNS @ 90° CORNER
- 3 (N) WALL
- 4 (N) ENHANCED RESILIENT TILE
- 5 (N) TROPHY DISPLAY NICHE
- 6 (N) 10 1/2" DEEP MULLION CURTAIN WALL SYSTEM w/ 1/4" LAMINATED SAFETY GLASS
- 7 (N) SECURITY STOREFRONT ASSEMBLY
- 8 (N) DOOR
- 9 (N) GYP. BRD. PAINTED SEE PAINT COLOR LEGEND ON SHEET A-402 P1
- 10 (N) GYP. BRD. PAINTED SEE PAINT COLOR LEGEND ON SHEET A-402 P2
- 11 (N) ACCESS CARD READER @ +40" AFF
- 12 (N) 4" W. WINDOW
- 13 (N) FRAME-LESS GLASS WITH A DOOR LOCK
- 14 (N) FIRE ALARM HORN/STROBE
- 15 (N) EXPOSED CONC. w/ STAIN
- 16 (N) DOOR ACCESS CONTROLS @ +36" AFF
- 17 (N) ALUMINUM TRANSITION STRIP
- 18 (N) BULLET-TRAP RECESSED CURRENCY TRAY
- 19 (N) LOCATION FOR (E) HALF-DOME SAFETY MIRROR
- 20 (N) ADJUSTABLE GLASS SHELVES
- 21 (N) ROOM SIGNAGE
- 22 (N) PAINTED MDF w/ BORE HOLES FOR ADJUSTABLE SHELVING
- 23 (N) RECTANGULAR TRANSACTION WINDOW
- 24 (N) 2" DRMB ALUM. DRYWALL REVEAL BASE
- 25 (N) RUBBER BASE
- 26 (N) WOOD PATTERN HIGH PRESSURE LAMINATE
- 27 (N) VINYL LETTERS ADHERED TO SOLID SURFACE COUNTER (FONT TO BE SELECTED BY ARCHITECT)
- 28 (N) VINYL LETTERS ADHERED TO CASEWORK (FONT TO BE SELECTED BY ARCHITECT)
- 29 (E) PULL STATION TO REMAIN

LEGEND

(N) WALL, MATCH (E) ADJACENT FINISHES



KRUGER BENSEN ZIEMER ARCHITECTS, INC. AIA  
 1199 FULFORD ST., SUITE 100A VENTURA, CA 93001  
 TELEPHONE (805) 650-1033

TODD A. JESPERSEN, AIA  
 PRINCIPAL/ARCHITECT

JONATHAN D. LEE  
 ARCHITECTURAL ASSISTANT

All ideas, design arrangements and plans indicated or represented by this drawing are owned by and are the property of KrugerBensenZiemer, AIA, architects, and were created, edited and developed for use on, and in connection with, the specified projects. None of such ideas, designs, arrangements or plans shall be used by or disclosed to any person, firm or corporation for any purpose whatsoever without the written permission of KrugerBensenZiemer.

ARCHITECTS  
 STAMP & SIGNATURE



REVISION	DESCRIPTION	DATE	BY
REVISIONS.01		9/11/19	TJ

DRAWN JL  
 CHECKED TJ  
 DATE 1/19/2019  
 JOB. NO. 18016

SHEET ENLARGED DEMO FLOOR PLAN  
 TITLE ENLARGED NEW FLOOR PLAN  
 INTERIOR ELEVATIONS

DOOR, FRAME AND SIGNAGE MESSAGE SCHEDULE																													
DOOR	DOOR INFO																		SIGNAGE INFO										
	DOOR OPENING		DOOR					CUTOUTS		HDWR GROUP	ASSY FIRE RATING	FRAME				DETAILS				DOOR REMARKS	SIGN TYPE/ SEE DETAIL SIDE OF DOOR		DESCRIPTION		MESSAGE		SIGNAGE REMARKS		
	WIDTH	HEIGHT	TYPE	MATL	THICK	FIN	COLOR	LITE	LVR			TYPE	MATL	FIN	COLOR	HEAD	JAMB	SILL	SIGNAGE		PULL SIDE	PUSH SIDE	PULL SIDE	PUSH SIDE	PULL SIDE	PUSH SIDE			
1	3'-0"	7'-0"	A	ALUM	1 3/4"	FF	-	1	-	01	-	1	ALUM	FF	-	4 A-800	4 A-800	4 A-800	7 A-800	G1 A-800	S1 A-800	CARD READER & ACCESS CONTROL PANIC HARDWARE	S1	S1	◇	◇	OFFICE	EXIT	◇
2	3'-0"	7'-0"	A	ALUM	1 3/4"	FF	-	1	-	02	-	1	ALUM	FF	-	4 A-800	4 A-800	4 A-800	7 A-800	G1 A-800	S1 A-800	CARD READER & ACCESS CONTROL	S1	S1	◇	◇	PRINCIPAL ASSISTANT PRINCIPAL EXIT	CONFERENCE	◇
3	3'-0"	7'-0"	A	ALUM	1 3/4"	FF	-	1	-	02	-	1	ALUM	FF	-	4 A-800	4 A-800	4 A-800	7 A-800	G1 A-800	S1 A-800		S1	S1	◇	◇			◇

**DOOR & WINDOW SCHEDULE KEYNOTES**

- 1 DOOR HARDWARE PROVIDED BY MODULAR PARTITION MANUFACTURER

**SIGNAGE KEYNOTES**

- 1 EXTERIOR PANEL SIGN
- 2 INTERIOR PANEL SIGN

**GLAZING TYPES**

- GL1 LAMINATED SAFETY GLASS (CLEAR) - 1/2" THICK
- GL2 BULLET-RESISTANT 1-1/4" LP 125 - LAMINATED (CLEAR)

**ABBREVIATIONS**

- ALUM ALUMINUM
- FF FACTORY FINISH
- HM HOLLOW METAL
- MFR PER MANUFACTURER
- PT PAINTED
- SC WD SOLID CORE WOOD
- SS STAINLESS STEEL
- BR BULLET-RESISTANT
- P.LAM PLASTIC LAMINATE

**GENERAL NOTES**

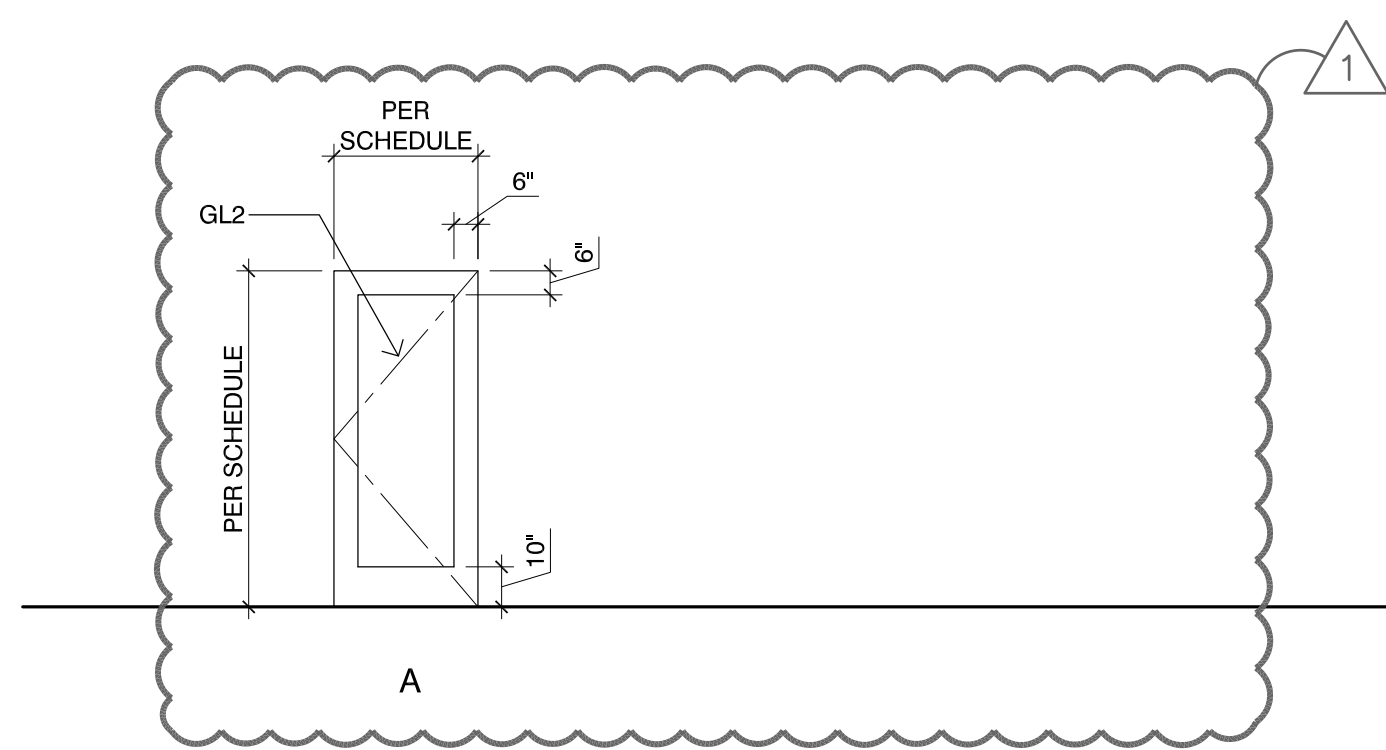
1. SEE S1/A-800 FOR INTERIOR PANEL SIGNAGE MOUNTING HEIGHTS.
2. SEE DOOR & FRAME SCHEDULE FOR PANEL SIGNAGE ASSOCIATED w/ A DOOR.
5. SEE SHEET A-800 FOR SIGN DETAILS.

**SIGNAGE NOTES**

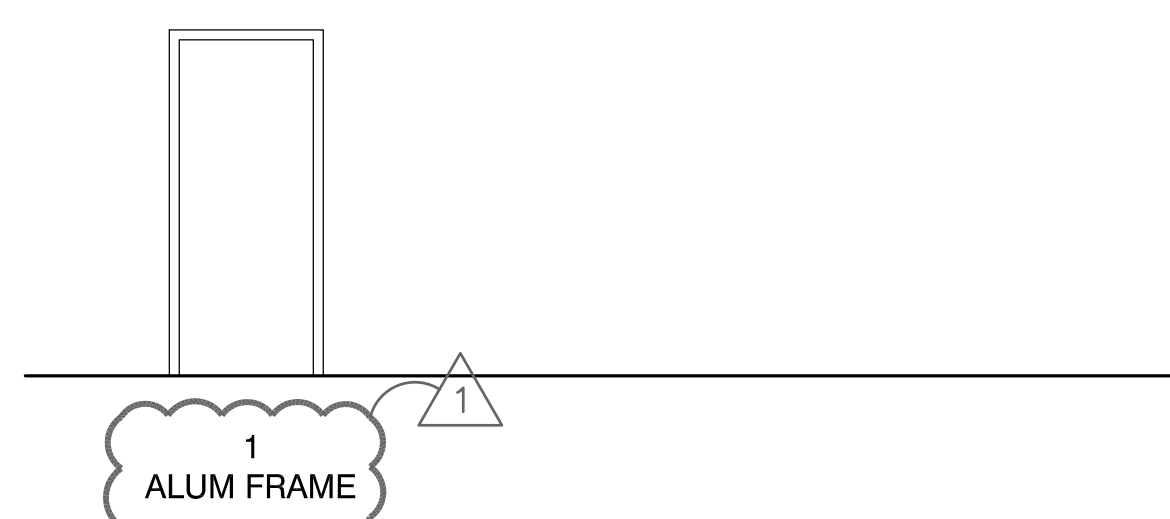
- SK1 PANEL WALL MOUNT

**DOORS AND WINDOWS NOTES**

1. VERIFY ALL ROUGH OPENINGS DIMENSIONS PRIOR TO FABRICATION.
2. ALL DOORS SHALL HAVE LEVER HARDWARE U.G.N. DOOR HANDLES, PULLS, LATCHES, LOCKS, AND OTHER OPERATING DEVICES SHALL BE INSTALLED MINIMUM 34" AND MAXIMUM 48" ABOVE FINISH FLOOR. (CBC 1008.1.9.2).
3. ALL EXIT DOORS SHALL BE OPENABLE FROM INSIDE WITHOUT THE USE OF A KEY OR SPECIAL KNOWLEDGE (CBC 1008.1.9) AND THE FORCE REQUIRED TO PUSH OR PULL AN EGRESS DOOR TO THE OPEN POSITION SHALL NOT EXCEED 5 POUND (CBC 1008.1.3).
4. CONTRACTOR SHALL PROVIDE POWER AS NECESSARY FOR FULL OPERATION OF KEYPAD ACCESS.
5. PANIC HARDWARE SHALL CONTAIN A MINIMUM OF TWO LOCKING POINTS ON EACH DOOR.
6. GLAZING IN DOORS OR WITHIN 40" OF ANY DOOR LOCKING MECHANISM SHALL BE FULLY TEMPERED SAFETY GLASS.
7. ALL PEDESTRIAN DOORS AND GATES (EXCEPT SLIDING DOORS) SHALL BE PROVIDED WITH A KICKPLATE AT THE BOTTOM 10 INCHES OF THE PUSH SIDE OF THE DOOR.
8. PROVIDE STEEL INSERTS AT STOREFRONTS AS REQUIRED.

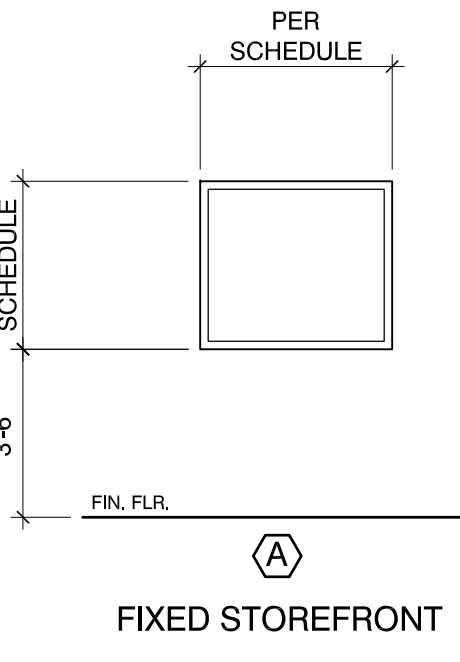


**DOOR TYPES**  
SCALE: 1/4" = 1'-0"

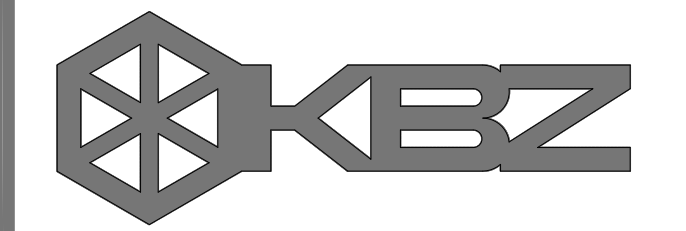


**DOOR FRAME TYPES**  
SCALE: 1/4" = 1'-0"

WINDOW & LOUVER SCHEDULE														
WINDOW TYPE	NOMINAL SIZE		FRAME			GLASS (2)		SCREEN	ASSY FIRE RATING	DETAILS				REMARKS
	WIDTH	HEIGHT	MATERIAL	FIN	COLOR	TYPE	THK			HEAD	L JAMB	R JAMB	SILL	
A	4'-0"	3'-6"	ALUM.	FF	TBD	GL-1	1/4"	-	NONE	18 A-800	18 A-800	18 A-800	18 A-800	FIXED STOREFRONT



**WINDOW TYPES**  
SCALE: 1/4" = 1'-0"



**KRUGER BENSEN ZIEMER ARCHITECTS, INC. AIA**  
 199 FIELSON ST., SUITE 100A VENTURA, CA 93001  
 TELEPHONE (805) 650-1033

**TODD A. JESPERSEN, AIA**  
 PRINCIPAL/ARCHITECT  
**JONATHAN D. LEE**  
 ARCHITECTURAL ASSISTANT

All ideas, design arrangements and plans indicated or represented by this drawing are owned by and are the property of Kruger-Bensen-Ziemer, AIA, architects, and were created, edited and developed for use on, and in connection with, the specific project. None of such ideas, design, arrangements or plans shall be used by or disclosed to any person, firm or corporation for any purpose whatsoever without the written permission of Kruger-Bensen-Ziemer.



△	-	-/-	XX
△	-	-/-	XX
△	-	-/-	XX
△	-	-/-	XX
△	REVISIONS.01	9/11/19	TJ
△	REVISION	DESCRIPTION	DATE

DRAWN JL  
 CHECKED TJ  
 DATE 1/19/2019  
 JOB. NO. 18016

SHEET DOOR & WINDOW SCHEDULE  
 TITLE

## ROOM FINISH SCHEDULE

ROOM NO.	ROOM NAME	FLOOR			BASE		WAINSCOT				WALLS								CEILING			REMARKS						
		SUB FLOOR	FLOOR MATERIAL	FINISH	COLOR	MATERIAL	FINISH	COLOR	MATERIAL	FINISH	COLOR	HEIGHT	NORTH		EAST		SOUTH		WEST		MATERIAL		FINISH	COLOR	HEIGHT			
													MATERIAL	FINISH	COLOR	MATERIAL	FINISH	COLOR	MATERIAL	FINISH						COLOR	MATERIAL	FINISH
K-3	LOBBY	F1	F3	FN3	C5	B1/B2	FN1	C2/C4	-	-	-	-	W1	FN2	P1	W2/3	FN1/2	P1/2&C6	W2	FN2	P1	W1	FN2	P1	CL3	-	-	VARIES
K-4A	HALL	F1	F3	FN3	C5	B1	FN1	C2	-	-	-	-	W1	FN2	P1	W2	FN2	P1	W1/2	FN2	P1	W1	FN2	P1	CL3	-	-	VARIES
K-4B	HALL	F1	F3	FN3	C5	B1	FN1	C2	-	-	-	-	W2	FN2	P1	W1	FN2	P1	W4	FN1	-	W2	FN2	P1	CL3	-	-	VARIES
K-6	CONFERENCE	F1	F2	FN1	C1	B1	FN1	C2	-	-	-	-	W2/4	FN1/2	P1	W1	FN2	P1	W1	FN2	P1	W1	FN2	P1	CL3	-	-	VARIES
K-14	RECEPTION	F1	F2	FN1	C1	B1	FN1	C2	-	-	-	-	W1/2	FN2	P1	W1	FN2	P1	W1	FN2	P1	W2	FN2	P1	CL3	-	-	VARIES

### ROOM FINISH NOTES

1. ALL FINISHES SHALL COMPLY WITH CBC CHAPTERS 3, 4, 6, 7, 8, 10 AND 11B AND CFC.
2. ALL EXPOSED STEEL FRAMING AND CONNECTORS AT BUILDING INTERIOR SHALL BE PAINTED.
3. ALL EXPOSED SPRINKLER PIPING AT BUILDING INTERIOR SHALL BE PAINTED.
4. ALL EXPOSED DUCTWORK SHALL BE PAINTED.
5. ALL EXPOSED GYPSUM BOARD SHALL RECEIVE A LEVEL 4 FINISH.
6. ALL INTERIOR WALL AND CEILING FINISHES SHALL MEET THE FLAMESPREAD AND SMOKE DEVELOPED INDEXES OF CBC TABLE 803.9.
7. FURNISH AND INSTALL 4'-0" HIGH 1" STAINLESS STEEL CORNER GUARDS AT ALL OUTSIDE WALL CORNERS WITHIN THE BUILDING.
8. CONTRACTOR SHALL BE RESPONSIBLE FOR SHOP DRAWINGS AND PROVIDING AND INSTALLING THE REQUIRED FACILITY INFRASTRUCTURE FOR THE SUPPORT SYSTEM SERVING ALL EQUIPMENTS. SUPPORT SYSTEMS INCLUDE, BUT NOT LIMITED TO CONDUITS, WIRES AND BOXES, UTILITIES SERVING ALL APPLIANCES. CONTRACTOR SHALL PROVIDE AND INSTALL ALL STRUCTURAL, MECHANICAL, PLUMBING, ELECTRICAL AND OTHER REQUIRED SUPPORT SERVICES NECESSARY TO SUPPORT THE OPERATION OF THE BUILDING COMPONENTS.
9. ALL FINISH FLOORING SURFACES SHALL BE FIRM, STABLE, AND SLIP RESISTANT.

MATERIALS LEGEND		MISC COLOR LEGEND	
Subfloor/Flooring	F1 (E) CONCRETE SUBFLOOR F2 (N) ENHANCED RESILIENT TILE F3 EXPOSED (E) CONCRETE, PATCH AS REQUIRED.	Base	B1 (N) 4" RUBBER BASE B2 (N) 2" DRMB ALUM. DRYWALL REVEAL BASE
Walls	W1 (E) GYP. BRD. W2 (N) GYP. BRD. W3 (N) WOOD PATTERN HIGH PRESSURE LAMNATE W4 (N) DEEP MULLION CURTAIN WALL SYSTEM	Paint Color Legend	P1 DUNN EDWARDS, PAINT COLOR: T.B.D. (WALLS & CEILINGS) P2 DUNN EDWARDS, PAINT COLOR: T.B.D. (DISPLAY CASE)
Ceilings	CL1 (E) ACOUSTICAL PANELS CL2 (N) ACOUSTICAL PANELS CL3 (E) GYP. BRD. CEILING	Keynotes	1 NOT USED
Finish	FN1 FACTORY FINISH FN2 PAINT FN3 STAINED	General Notes	<ol style="list-style-type: none"> <li>1. DIRECTIONAL LOCATIONS INDICATED ON ROOM FINISH SCHEDULES ARE ORIENTATED ACCORDING TO TRUE NORTH AS SHOWN ON PLAN</li> <li>2. ALL WALLS TO BE PAINTED P1 U.N.O.</li> <li>3. PROVIDE TRANSITIONS AT ALL FLOORING MATERIAL CHANGES - REF DETAILS THIS SHEET.</li> <li>4. ALL MATERIALS TO MEET CBC TABLE 8A FOR FRAME SPREAD.</li> <li>5. INTERIOR WALL AND CEILING FINISHES SHALL BE CLASSIFIED FOR FIRE PERFORMANCE AND SMOKE DEVELOPMENT PER 2016 CALIFORNIA BUILDING CODE, SEC. 803.</li> <li>6. INTERIOR WALL AND CEILING FINISHES SHALL BE CLASSIFIED BY OCCUPANCY PER TABLE 803.9 OR BE TESTED PER SEC. 803.12 (NFPA 286 CRITERIA) OF 2016 CALIFORNIA BUILDING CODE.</li> <li>7. TEXTILE WALL AND VINYL COVERINGS SHALL BE TESTED PER SEC. 803.1.3 ACCEPTANCE CRITERIA OF NFPA 265 OR PER SEC. 803.1.4 ACCEPTANCE CRITERIA TESTED TO ASTM E84 OR UL 723 CLASS A FLAME SPREAD INDEX AND HAVE AFSS PER SEC. 903.1.1 OR 903.1.1.2, 2010 CALIFORNIA BUILDING CODE.                             <ol style="list-style-type: none"> <li>a. EXCEPTION: 803.2 MATERIALS LESS THAN 0.036" THICK APPLIED DIRECTLY NEED NOT BE TESTED.</li> <li>b. PER SEC. 803.5, TEXTILE WALL COVERINGS, INCLUDING CARPET, SHALL BE TESTED USING PRODUCT MOUNTING SYSTEM INCLUDING ADHESIVE.</li> <li>c. PER SEC. 803.6, TEXTILE CEILING COVERINGS SHALL BE TESTED USING PRODUCT MOUNTING SYSTEM INCLUDING ADHESIVE.</li> <li>d. PER SEC. 803.7, EXPANDED VINYL WALL COVERINGS SHALL BE TESTED USING PRODUCT MOUNTING SYSTEM INCLUDING ADHESIVE.</li> <li>e. PER SEC. 803.8, EXPANDED VINYL CEILING COVERINGS SHALL BE TESTED USING PRODUCT MOUNTING SYSTEM INCLUDING ADHESIVE.</li> </ol> </li> <li>8. PER SEC. 803.8.10, STABILITY - INTERIOR FINISH MATERIALS WILL NOT BECOME READILY DETACHED WHERE SUBJECTED TO ROOM TEMP. OF 200 DEG. F FOR 30 MIN.</li> <li>9. DECORATIVE TRIM &amp; MATERIALS SHALL COMPLY WITH 2016 CALIFORNIA BUILDING CODE.</li> <li>10. THERMAL AND ACOUSTICAL INSULATION SHALL COMPLY WITH SEC. 719, 2010 CALIFORNIA BUILDING CODE.</li> </ol>

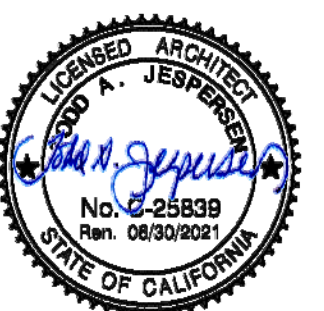


**KRUGER BENSEN ZIEMER ARCHITECTS, INC. AIA**  
 199 FELERSON ST. SUITE 100A VENTURA CA 93001  
 TELEPHONE (805) 650-1033

**TODD A. JESPERSEN, AIA**  
 PRINCIPAL/ARCHITECT  
**JONATHAN D. LEE**  
 ARCHITECTURAL ASSISTANT

All ideas, design arrangements and plans indicated or represented by this drawing are owned by and are the property of Kruger-Bensen-Ziemer, AIA, architects, and may be created, copied and distributed for use on, and in connection with, the specific project. None of such ideas, designs, arrangements or plans shall be used by or disclosed to any person, firm or corporation for any purpose whatsoever without the written permission of Kruger-Bensen-Ziemer.

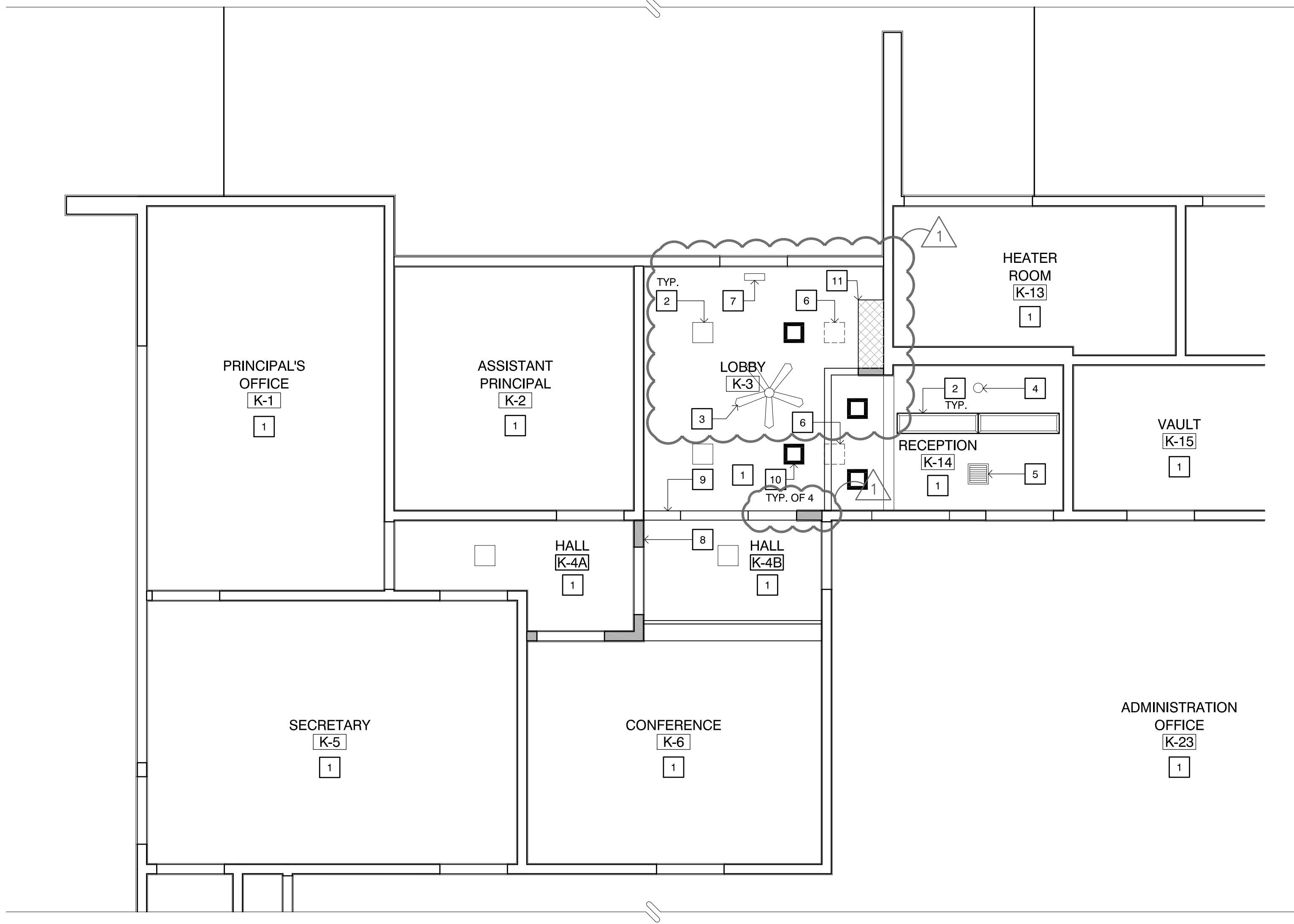
ARCHITECTS  
STAMP & SIGNATURE



△	-	-/-	XX
△	-	-/-	XX
△	-	-/-	XX
△	-	-/-	XX
△	REVISIONS.01	9/11/19	TJ
REVISION	DESCRIPTION	DATE	BY

DRAWN JL  
 CHECKED TJ  
 DATE 1/19/2019  
 JOB NO. 18016

SHEET ROOM FINISH SCHEDULE  
 TITLE



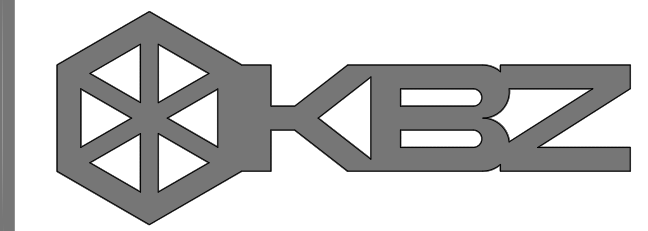
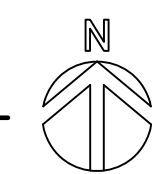
CEILING PLAN KEYNOTES

- 1 (E) CEILING TO REMAIN
- 2 (E) LIGHT FIXTURE TO REMAIN
- 3 (E) CEILING FAN TO REMAIN
- 4 (E) SMOKE DETECTOR TO REMAIN
- 5 (E) GRILLE TO REMAIN
- 6 REMOVE (E) LIGHT FIXTURE, PATCH CEILING TO MATCH (E)
- 7 (E) EXIT SIGN TO REMAIN
- 8 (N) WALL - FROM FLOOR TO CEILING
- 9 (N) SECURITY STOREFRONT
- 10 (N) LIGHT FIXTURE: LITHONIA WF6-SQ-S-LED-3500K-MW WITH WFSJU HANGER & WFEY CABLE AS REQUIRED. PATCH & REPAIR CEILING AS REQD. MATCH (E) ADJACENT FINISHES
- 11 (N) CEILING PATCH AS REQUIRED

LEGEND

- (N) WALL, MATCH (E) ADJACENT FINISHES
- (N) CEILING PATCH AS REQUIRED

1 REFLECTED CEILING PLAN  
 SCALE: 1/4" = 1'-0"

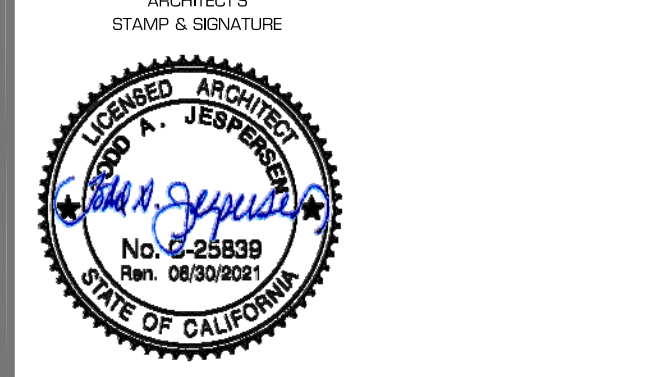


KRUGER BENSEN ZIEMER ARCHITECTS, INC. AIA  
 199 FIELDFORD ST., SUITE 100A VENTURA CA 93001  
 TELEPHONE (805) 850-1033

TODD A. JESPERSEN, AIA  
 PRINCIPAL/ARCHITECT

JONATHAN D. LEE  
 ARCHITECTURAL ASSISTANT

All ideas, design arrangements and plans indicated or represented by this drawing are owned by and are the property of KrugerBensenZiemer, AIA, architects, and were created, edited and developed for use on, and in connection with, the specific project. None of such ideas, design, arrangements or plans shall be used by or disclosed to any person, firm or corporation for any purpose whatsoever without the written permission of KrugerBensenZiemer.

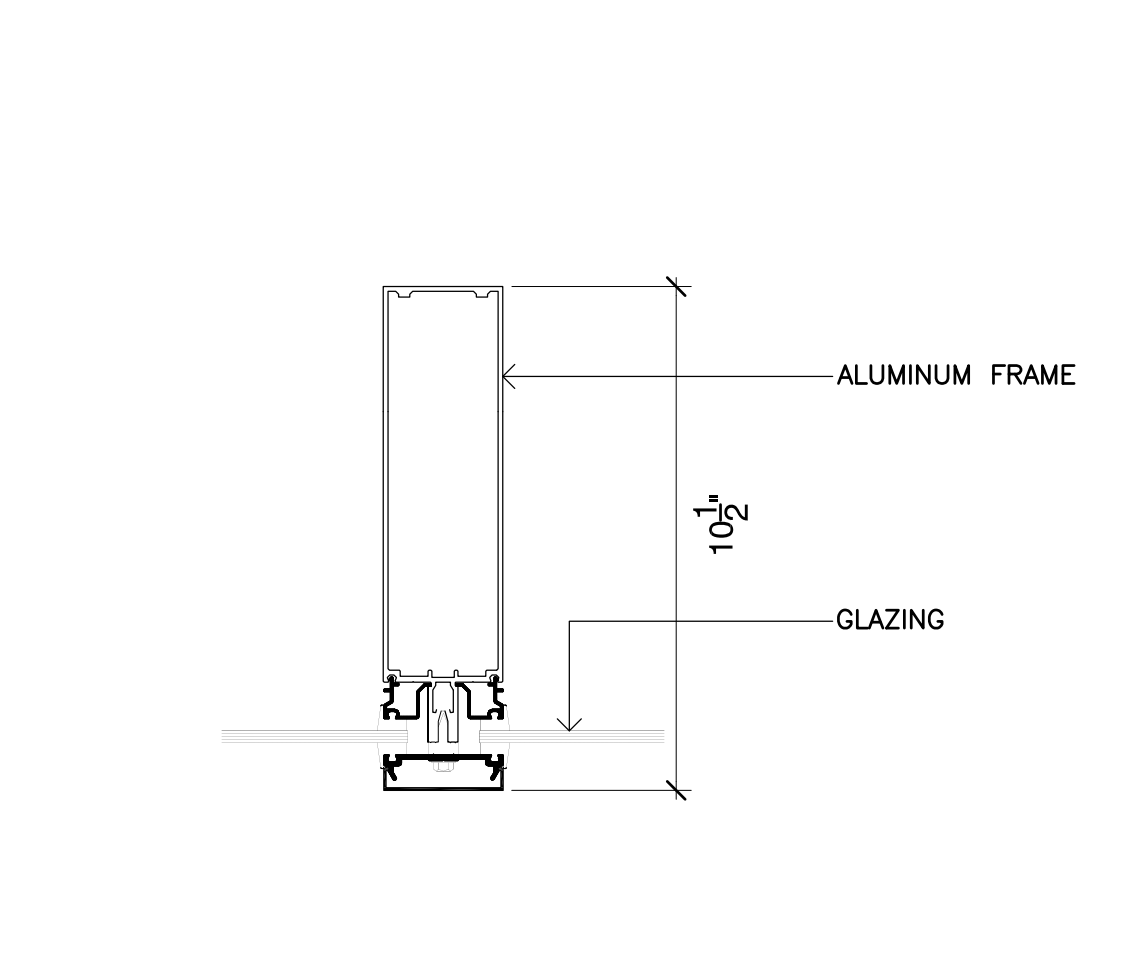


△	-	--/	XX
△	-	--/	XX
△	-	--/	XX
△	-	--/	XX
△	REVISIONS.01	9/11/19	TJ
REVISION	DESCRIPTION	DATE	BY

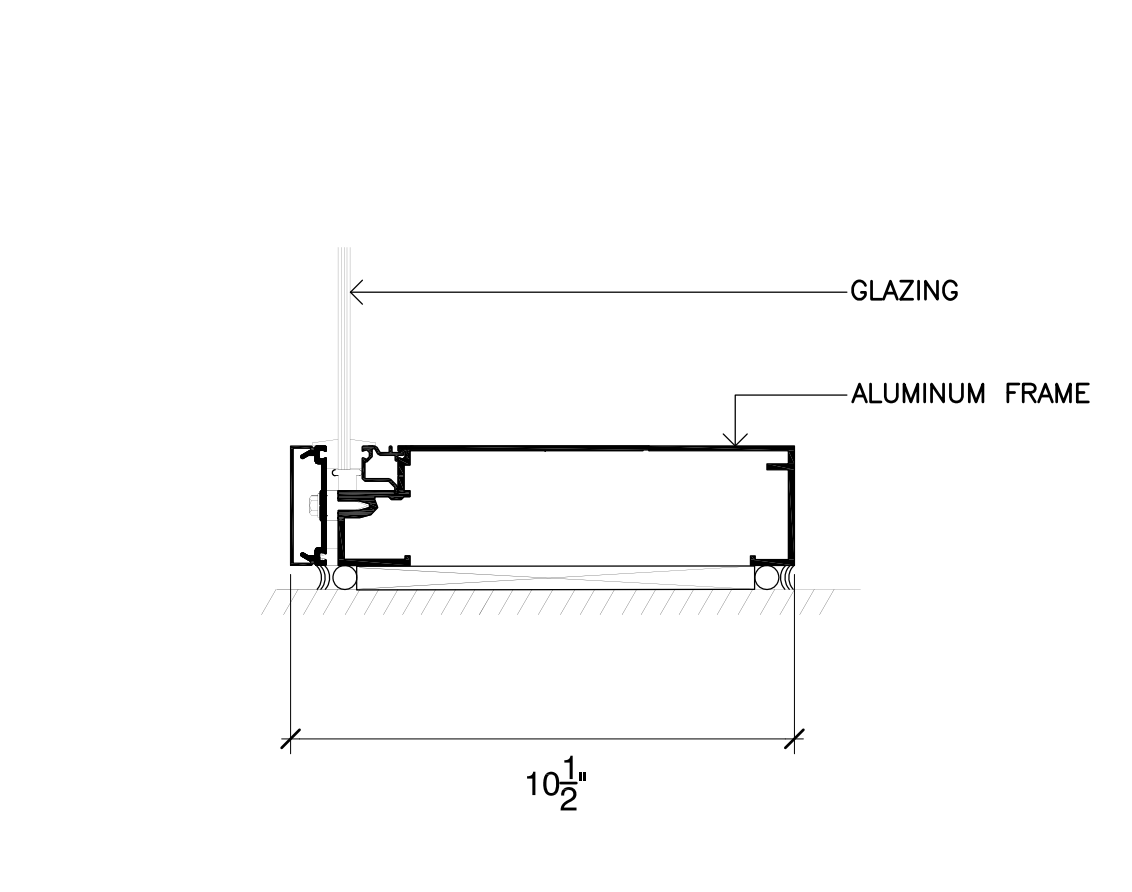
DRAWN JL  
 CHECKED TJ  
 DATE 1/19/2019  
 JOB. NO. 18016

SHEET REFLECTED CEILING PLAN  
 TITLE

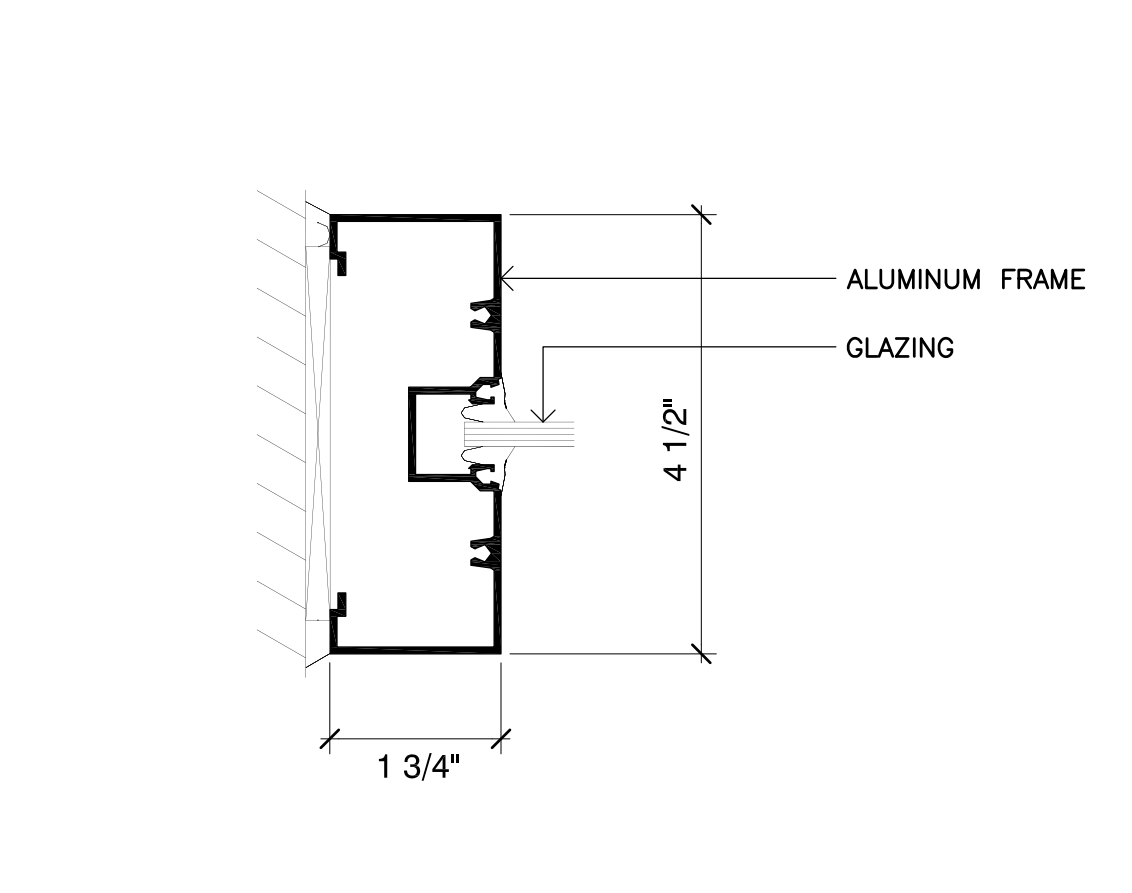
SHEET A-600



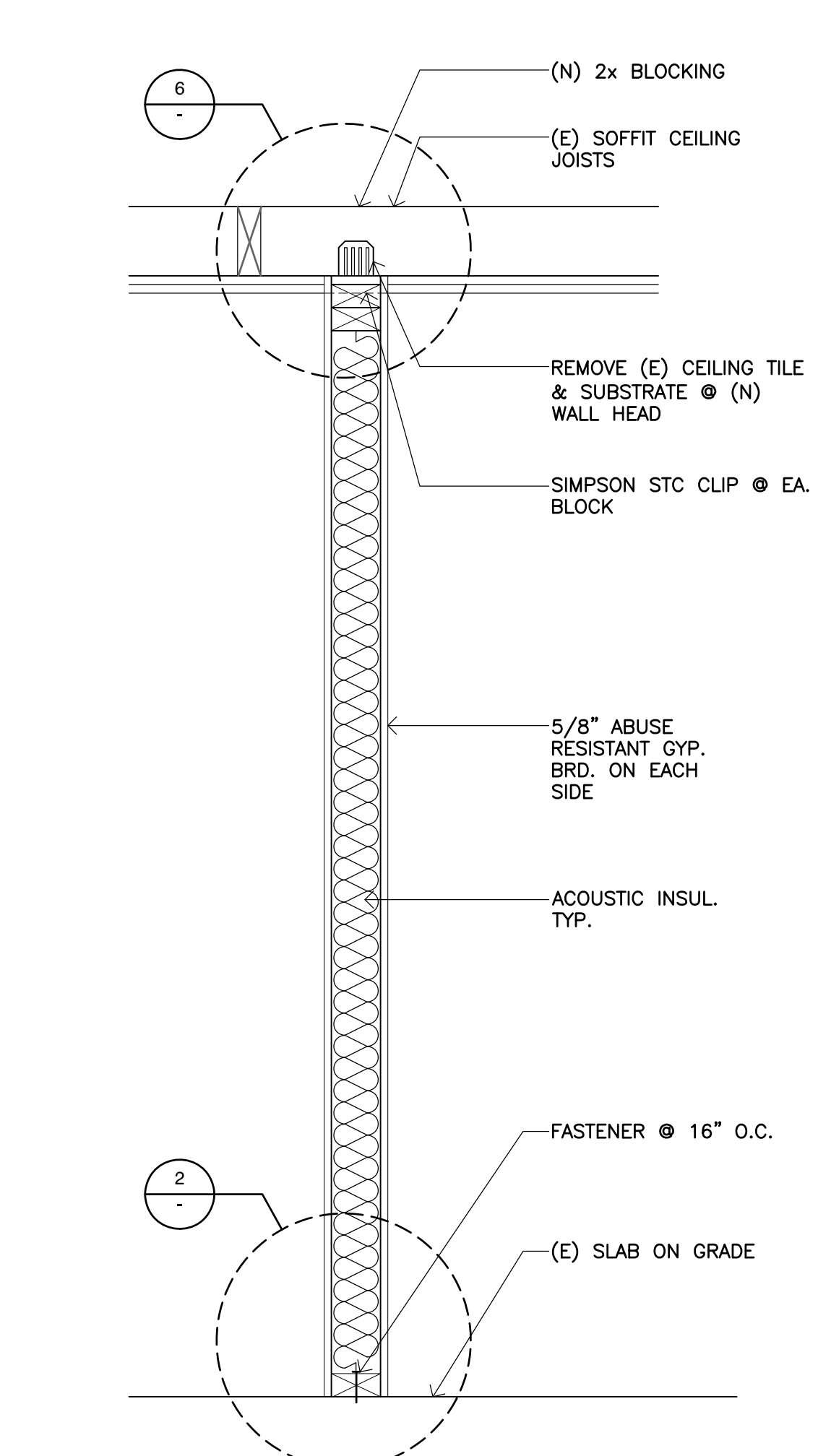
**16 Deep Mullion Curtain Wall Mullion**  
SCALE: 3" = 1'-0"



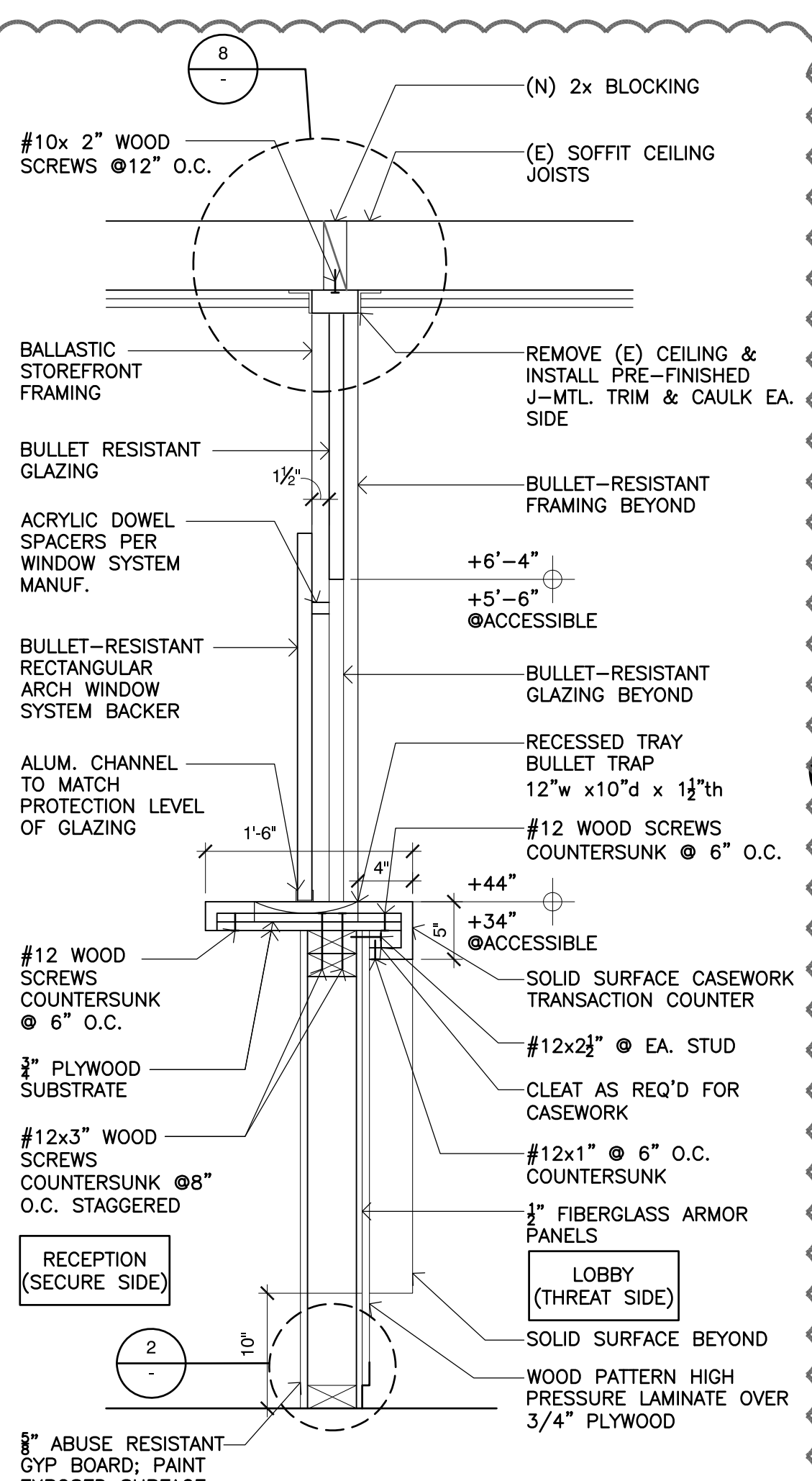
**17 Deep Mullion Curtain Wall Sill**  
SCALE: 3" = 1'-0"



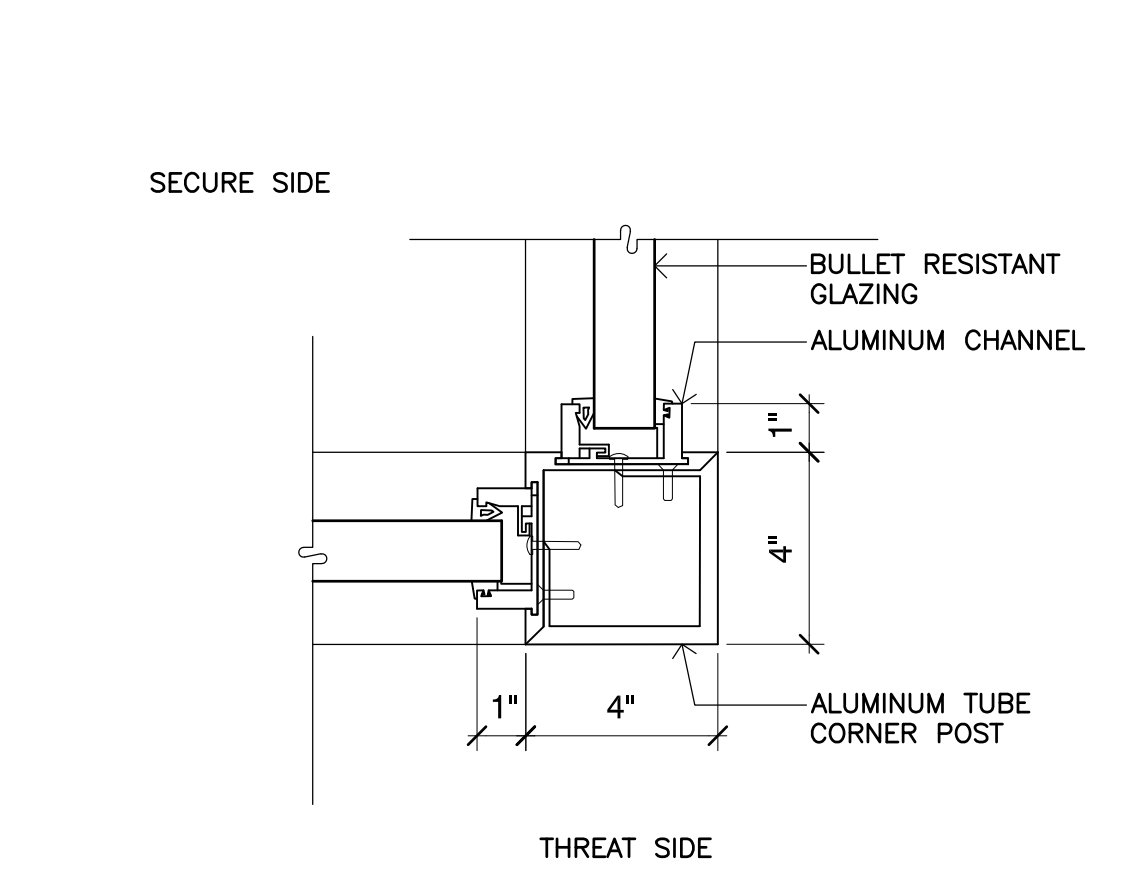
**18 Fixed Storefront**  
SCALE: 6" = 1'-0"



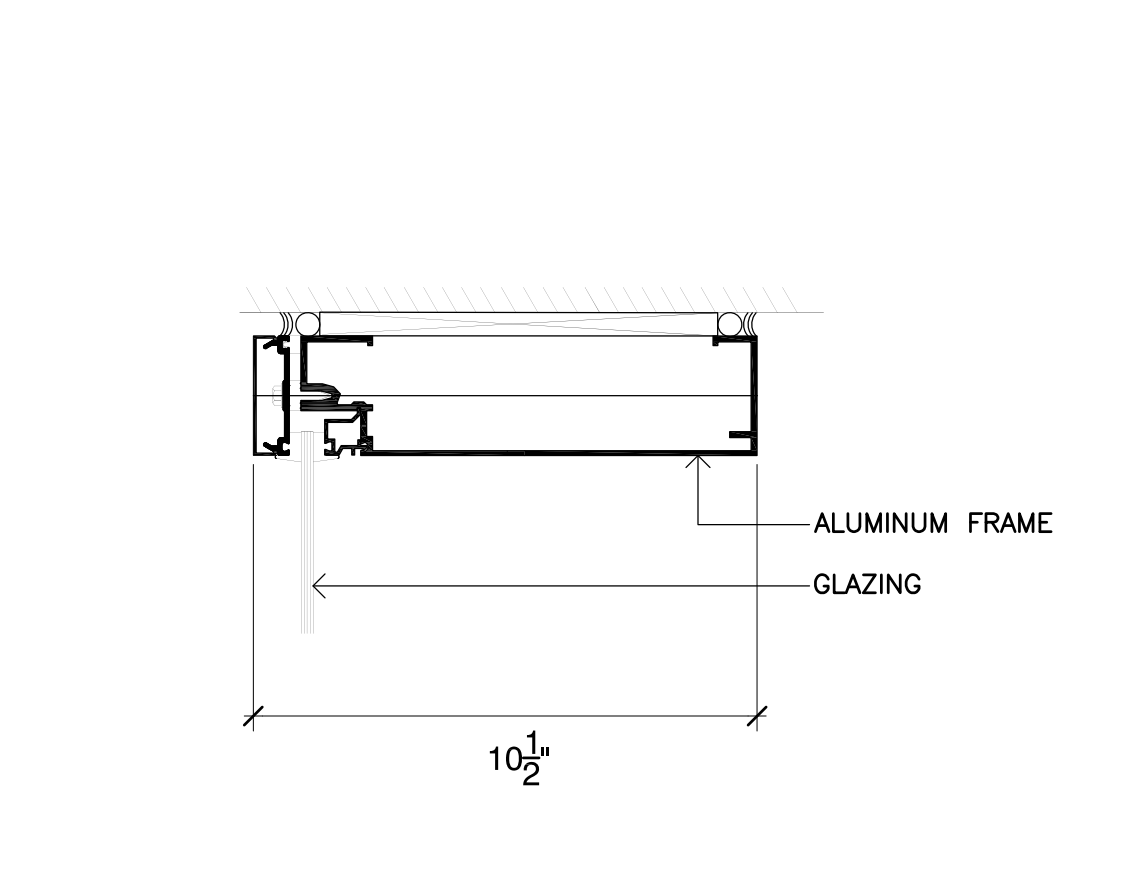
**19 Wall Section**  
SCALE: 1" = 1' - 0"



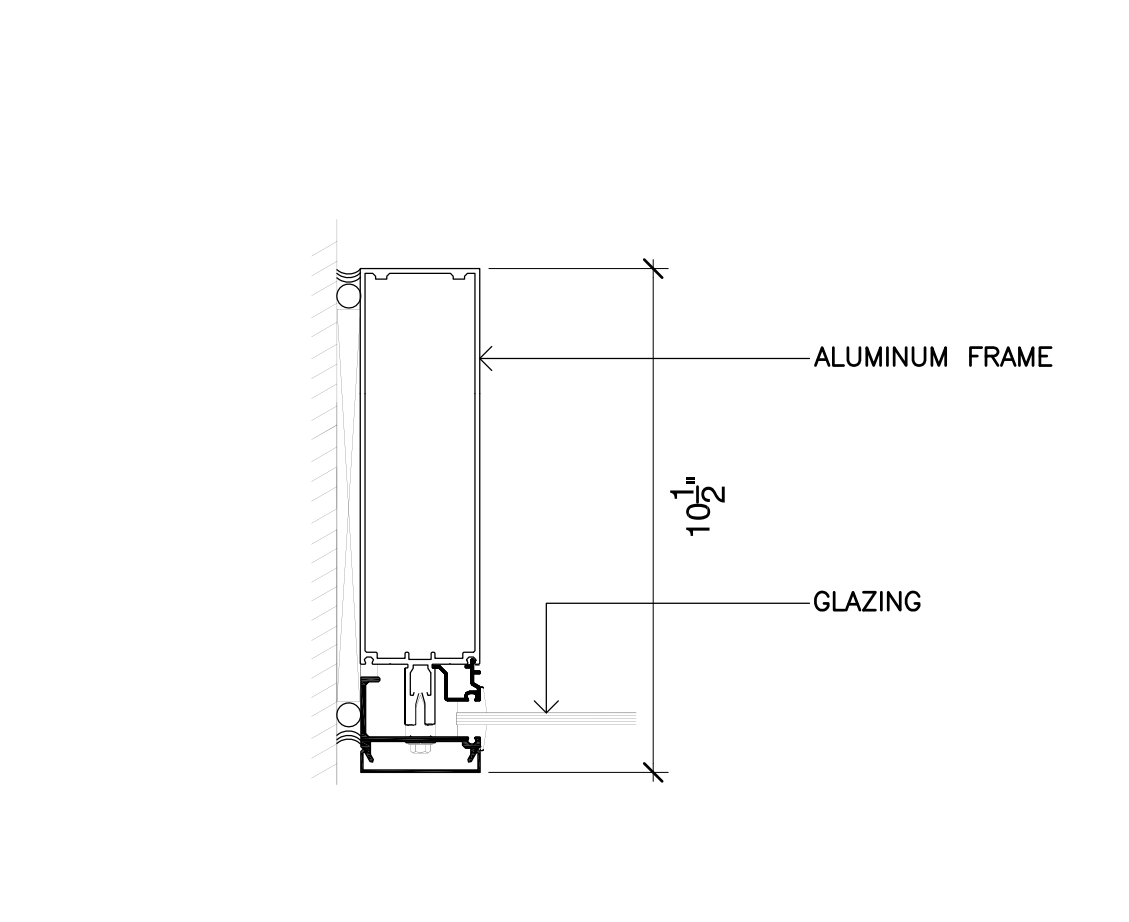
**12 Storefront Wall Section**  
SCALE: 1" = 1' - 0"



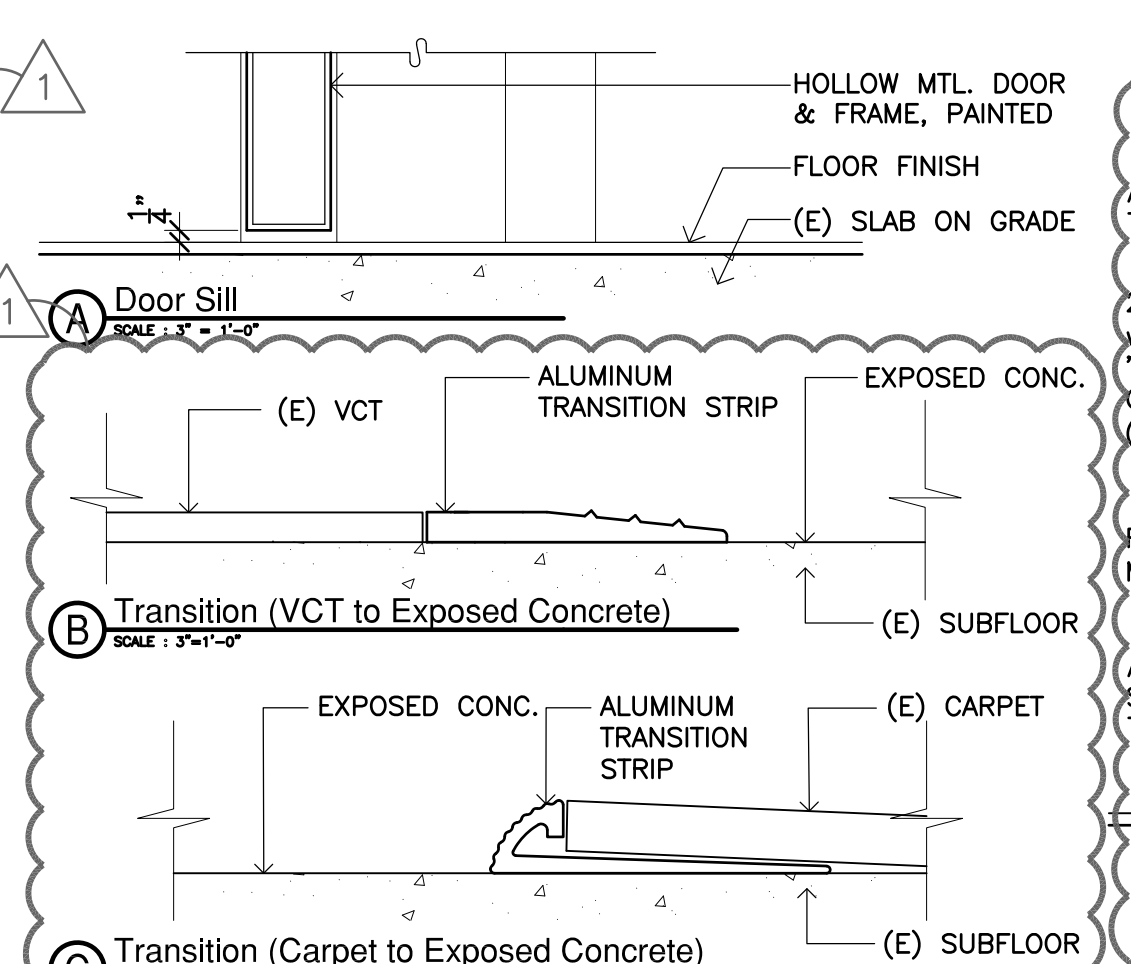
**13 Storefront Corner**  
SCALE: 3" = 1'-0"



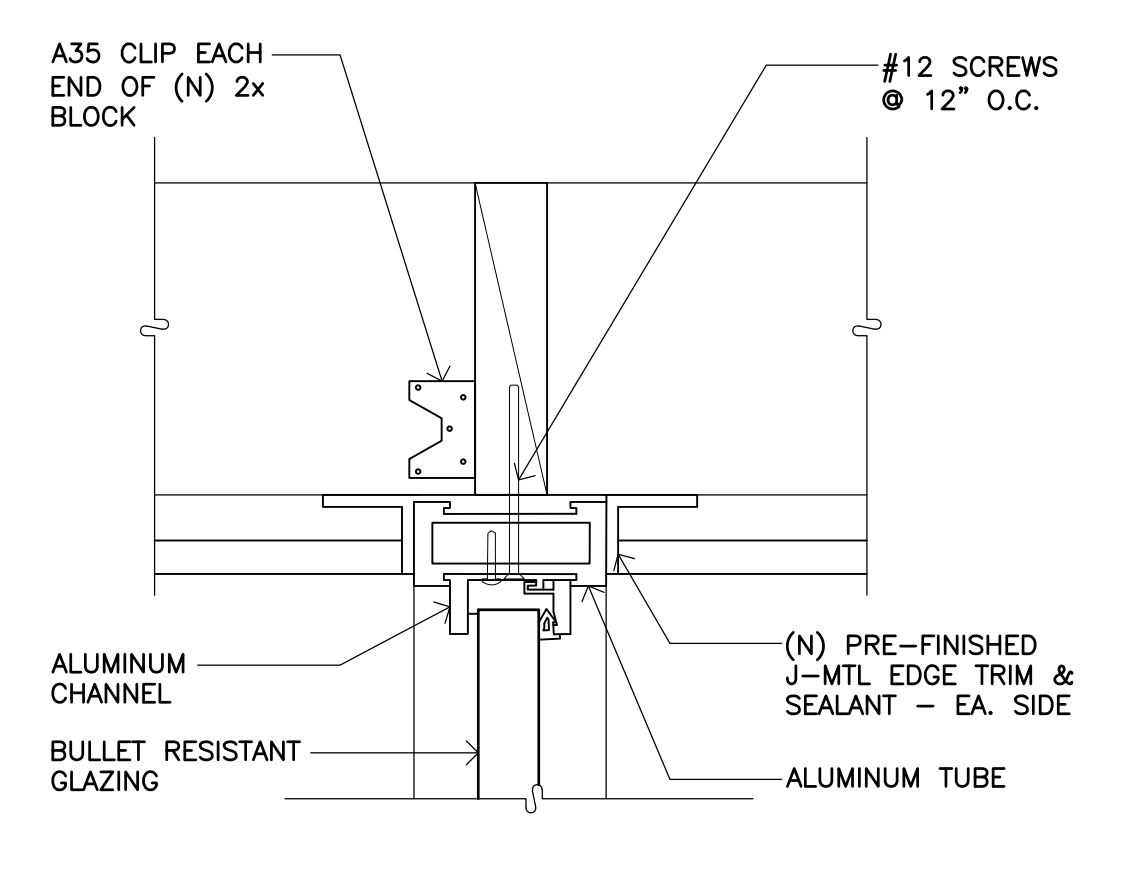
**14 Deep Mullion Curtain Wall Head**  
SCALE: 3" = 1'-0"



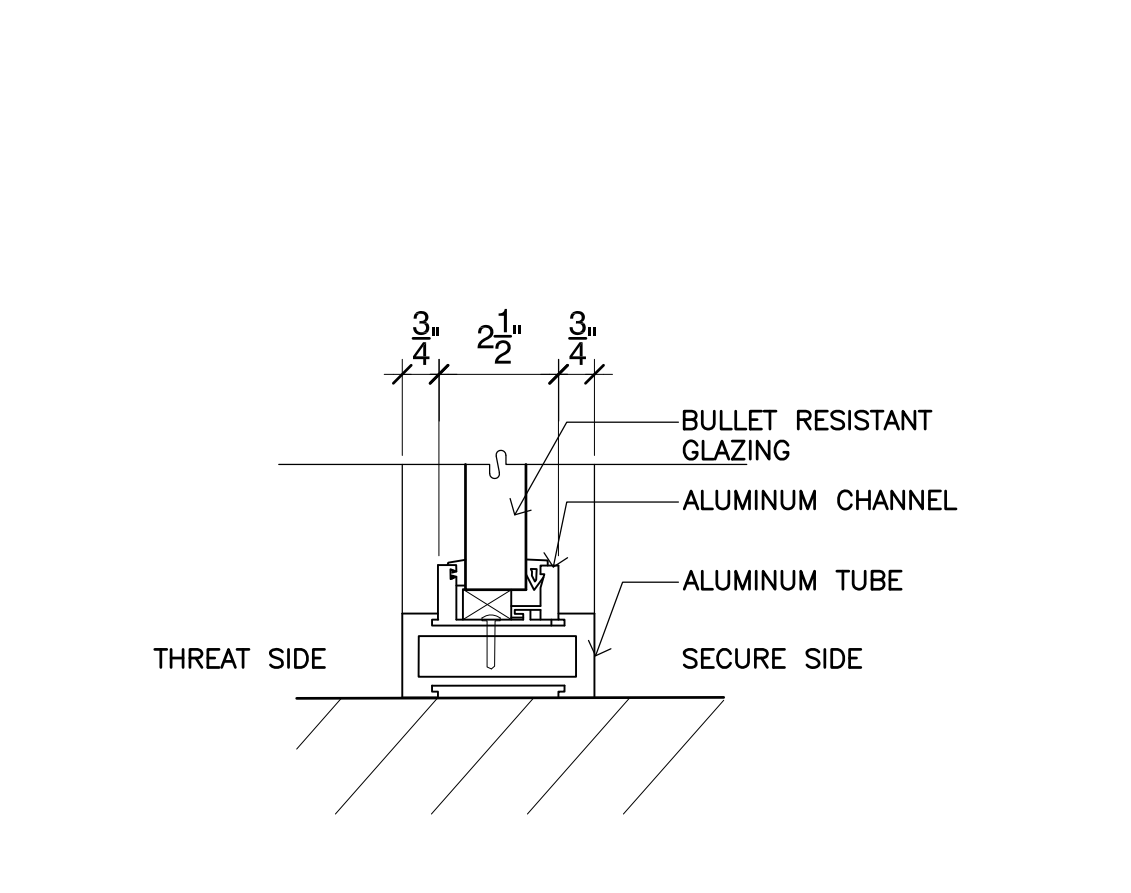
**15 Deep Mullion Curtain Wall Jamb**  
SCALE: 3" = 1'-0"



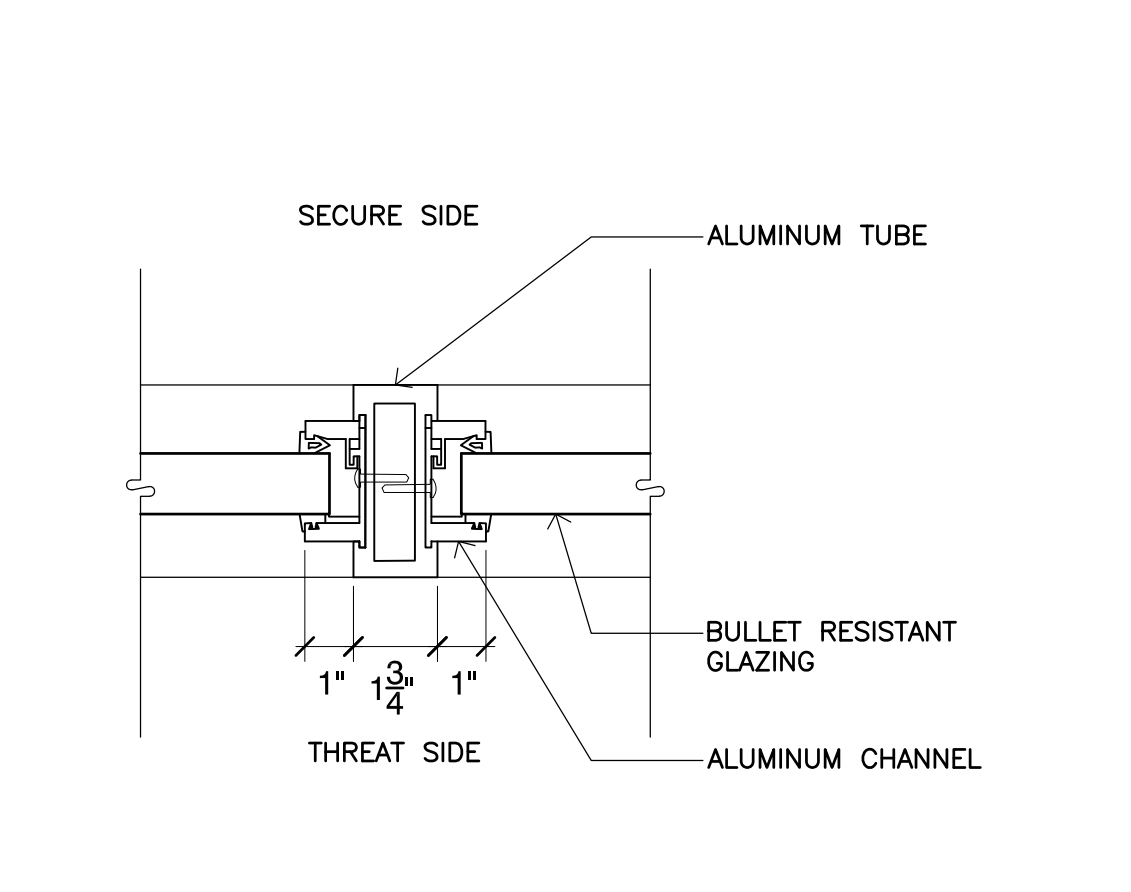
**7 Door Sill & Transition Strip**  
SCALE: 3" = 1'-0"



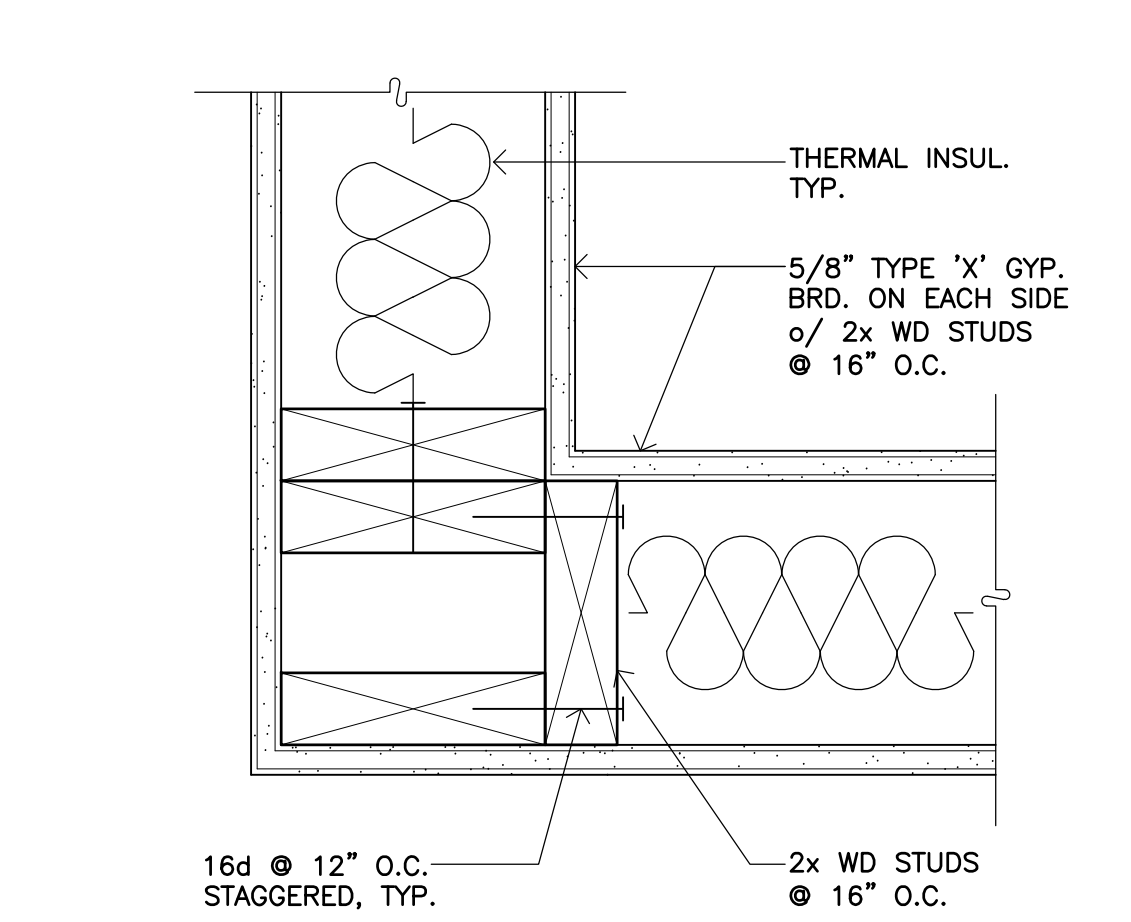
**8 Storefront Head (Jamb Sim.)**  
SCALE: 3" = 1'-0"



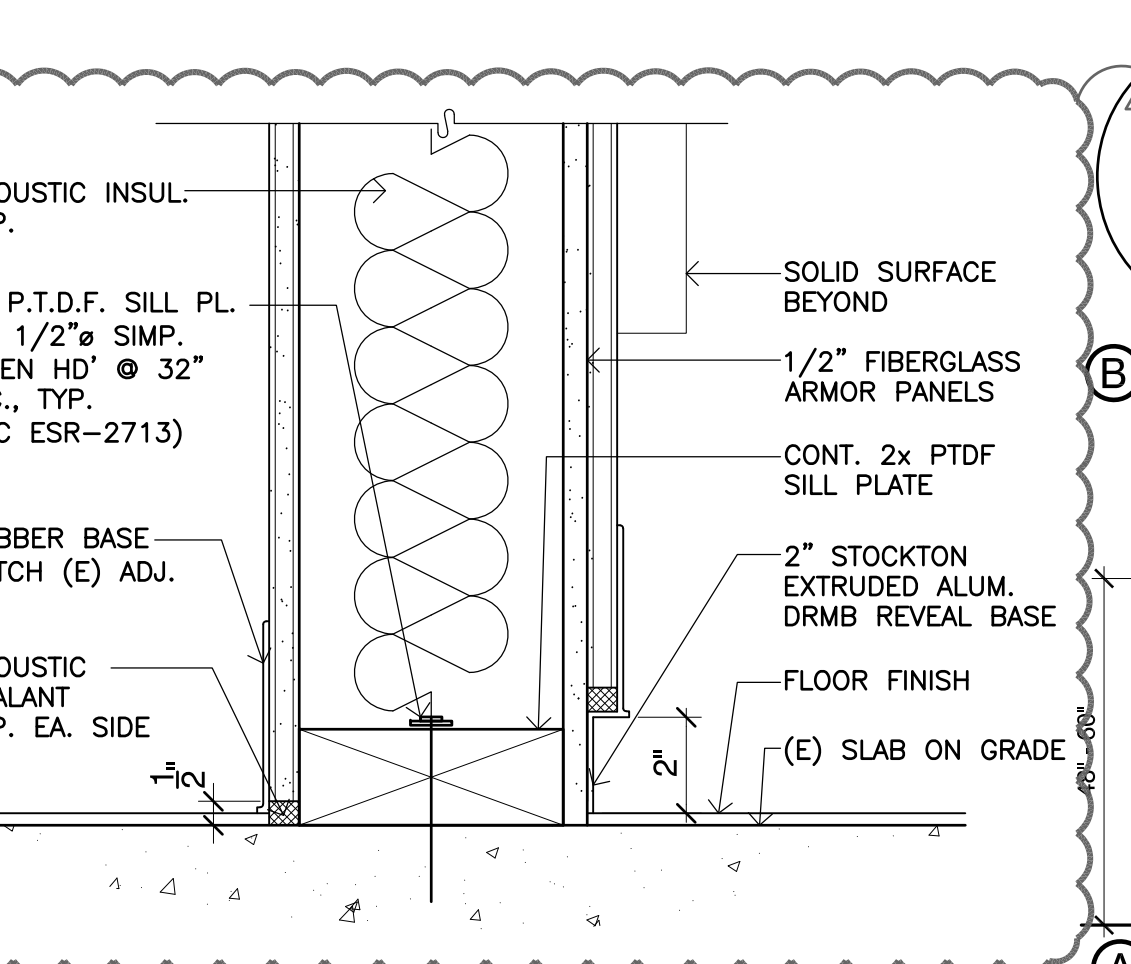
**9 Storefront Sill**  
SCALE: 3" = 1'-0"



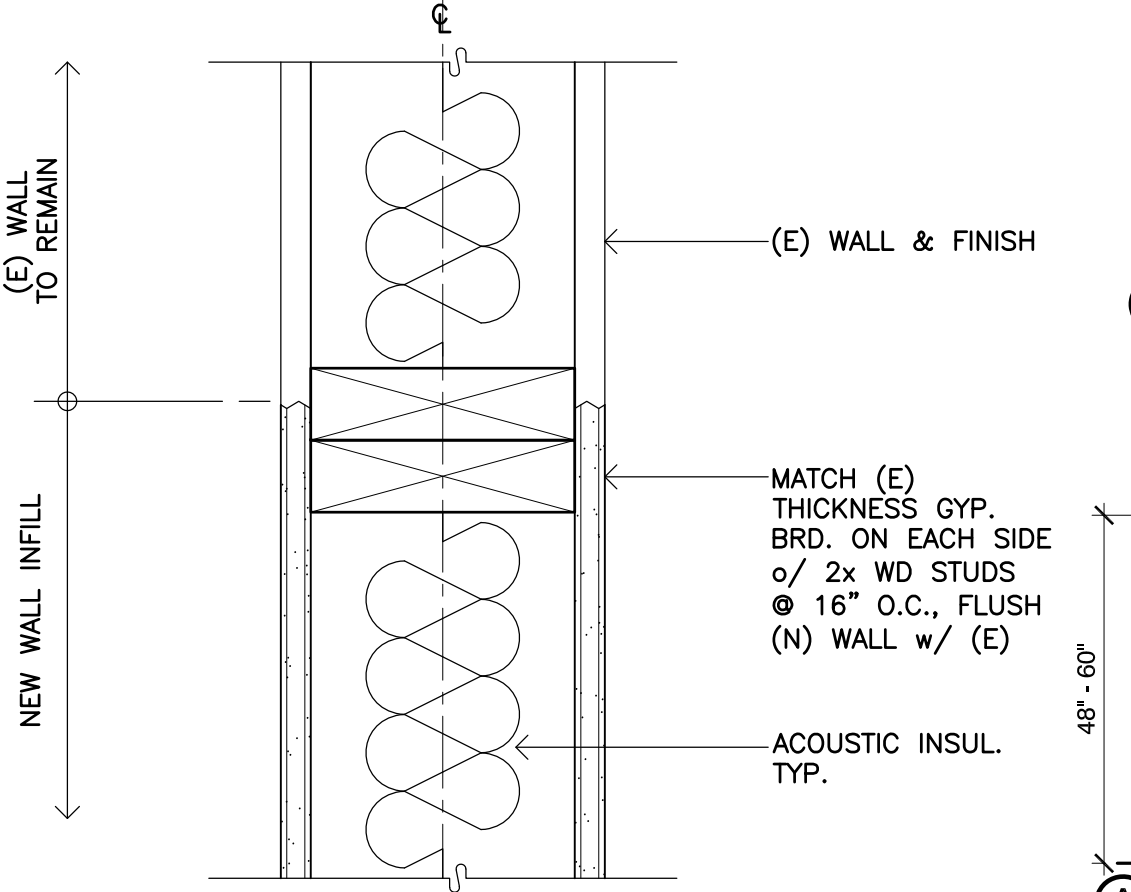
**10 Storefront Mullion**  
SCALE: 3" = 1'-0"



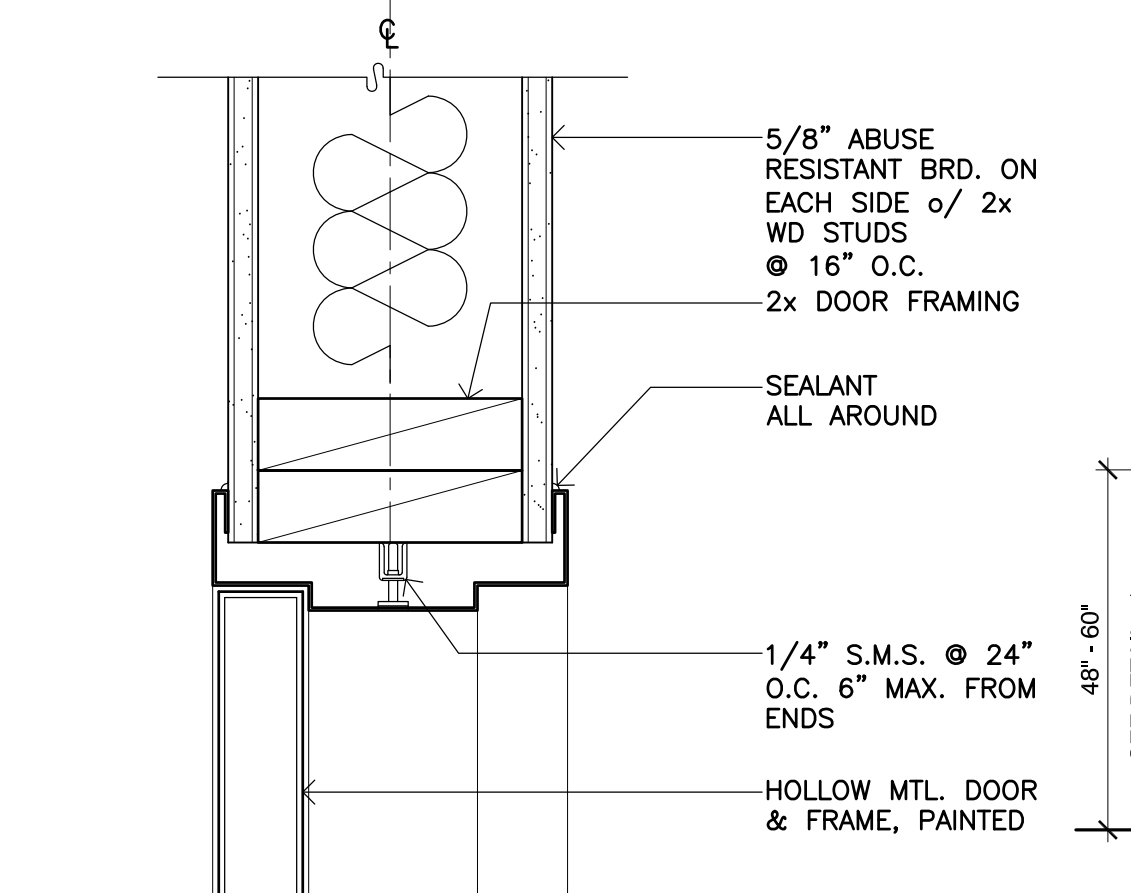
**11 Wall Corner Detail**  
SCALE: 3" = 1'-0"



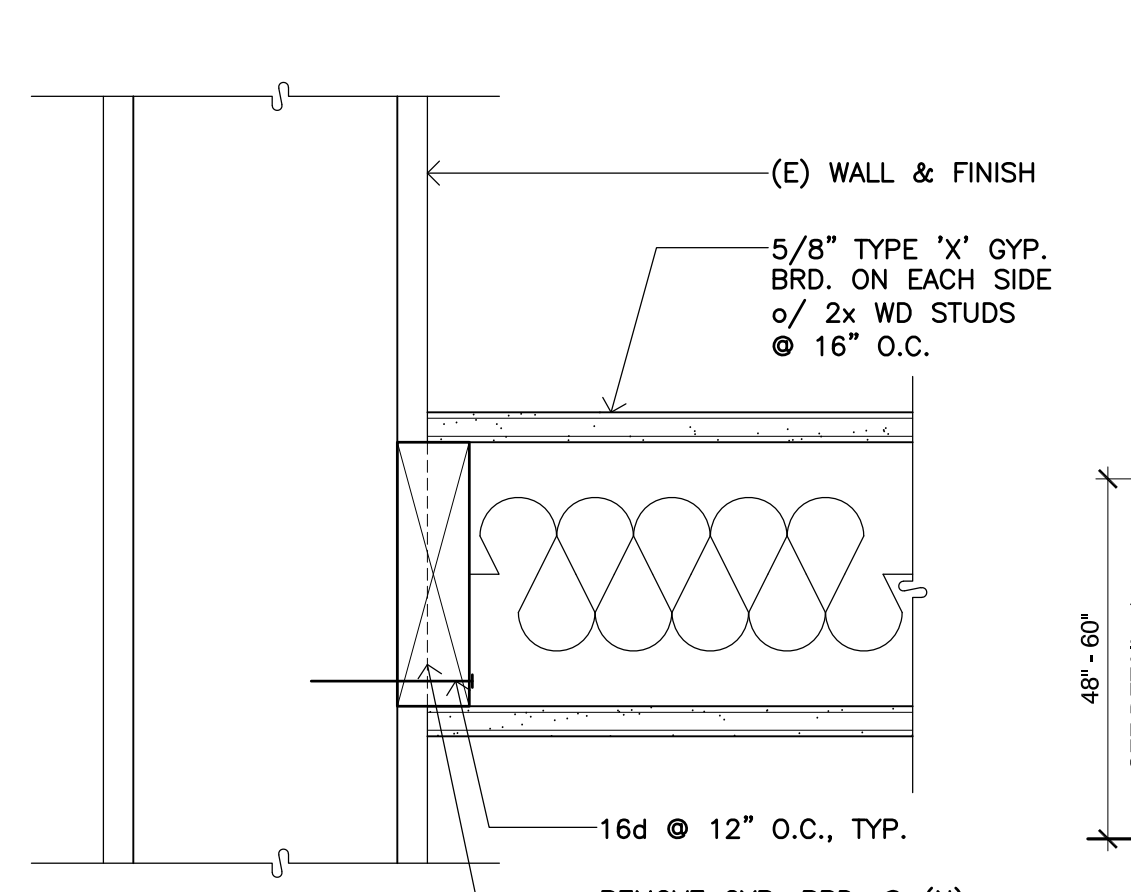
**2 Non-bearing Interior Wall to Conc.**  
SCALE: 3" = 1'-0"



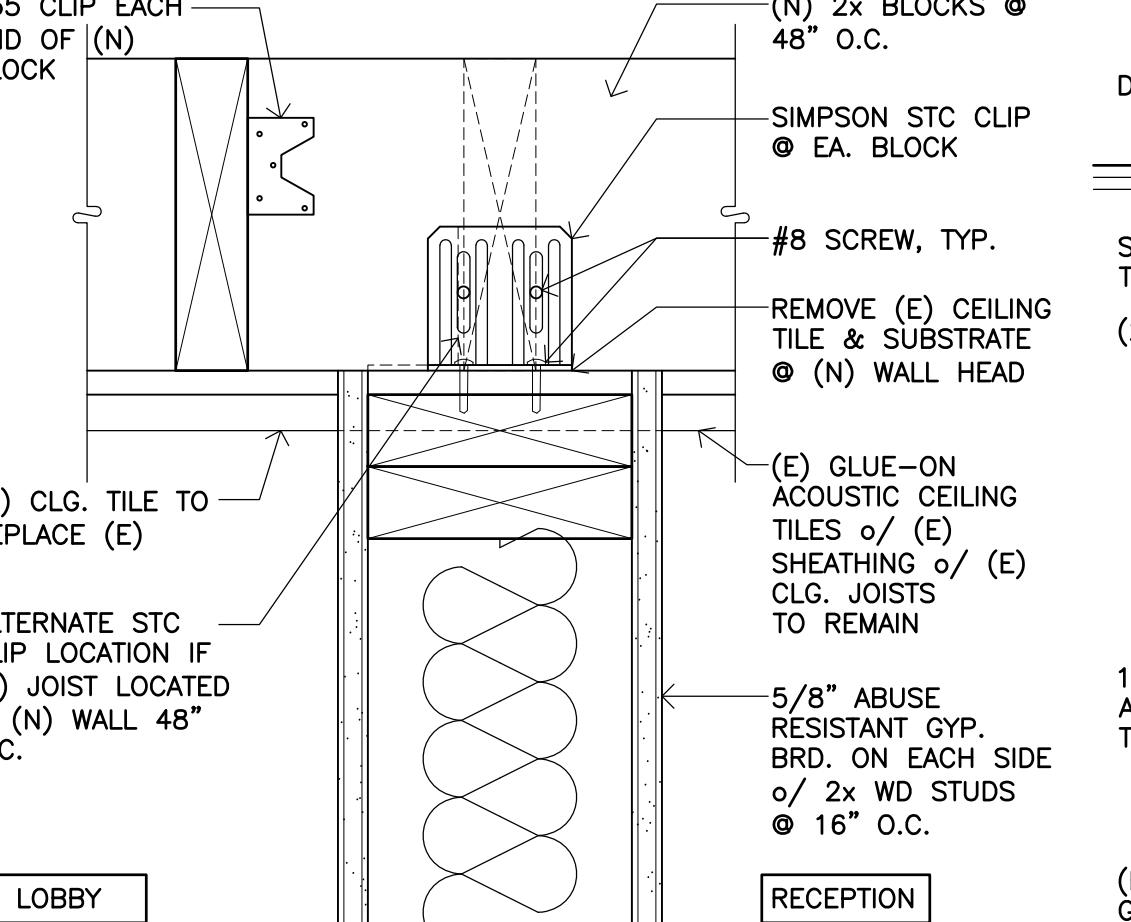
**3 Typ. Wall Infill**  
SCALE: 3" = 1'-0"



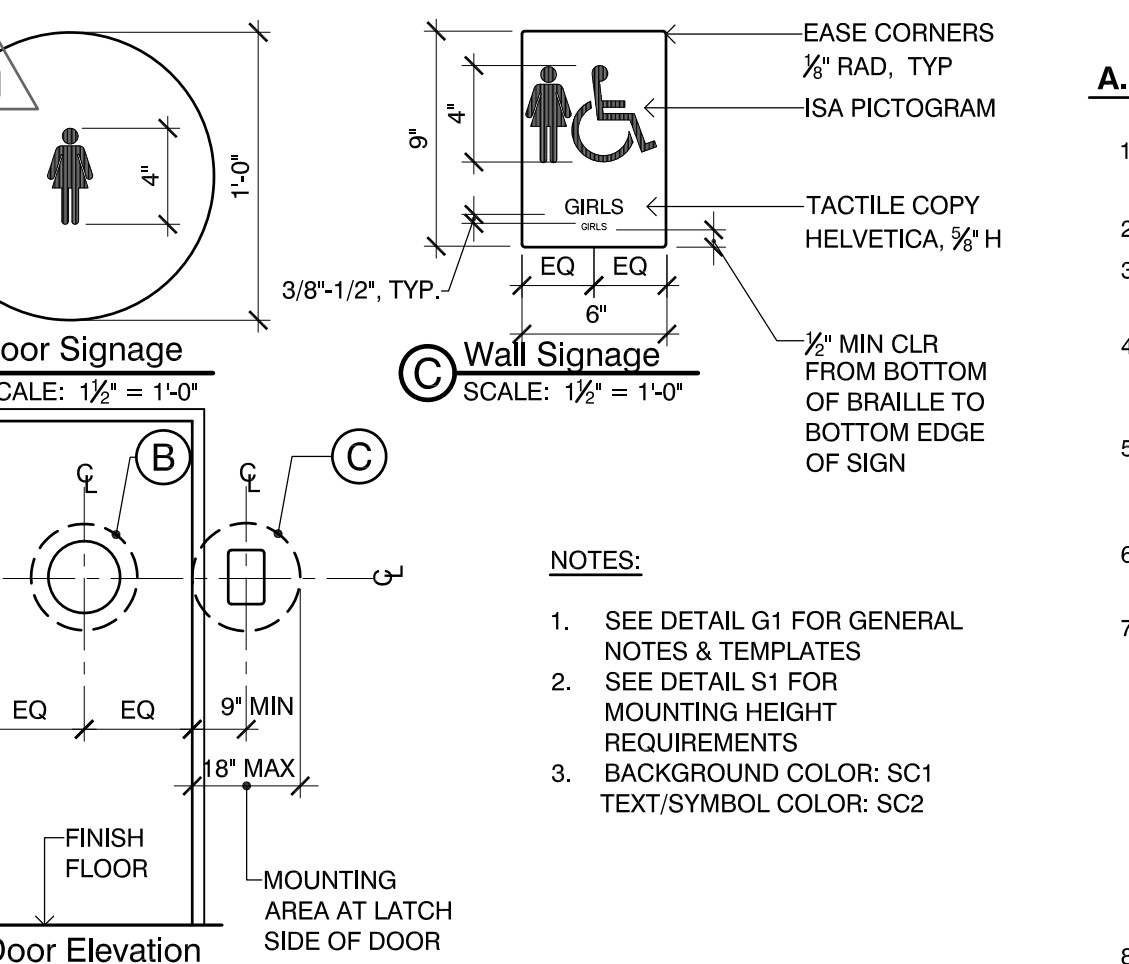
**4 Head at Interior Door (Jamb Sim.)**  
SCALE: 3" = 1'-0"



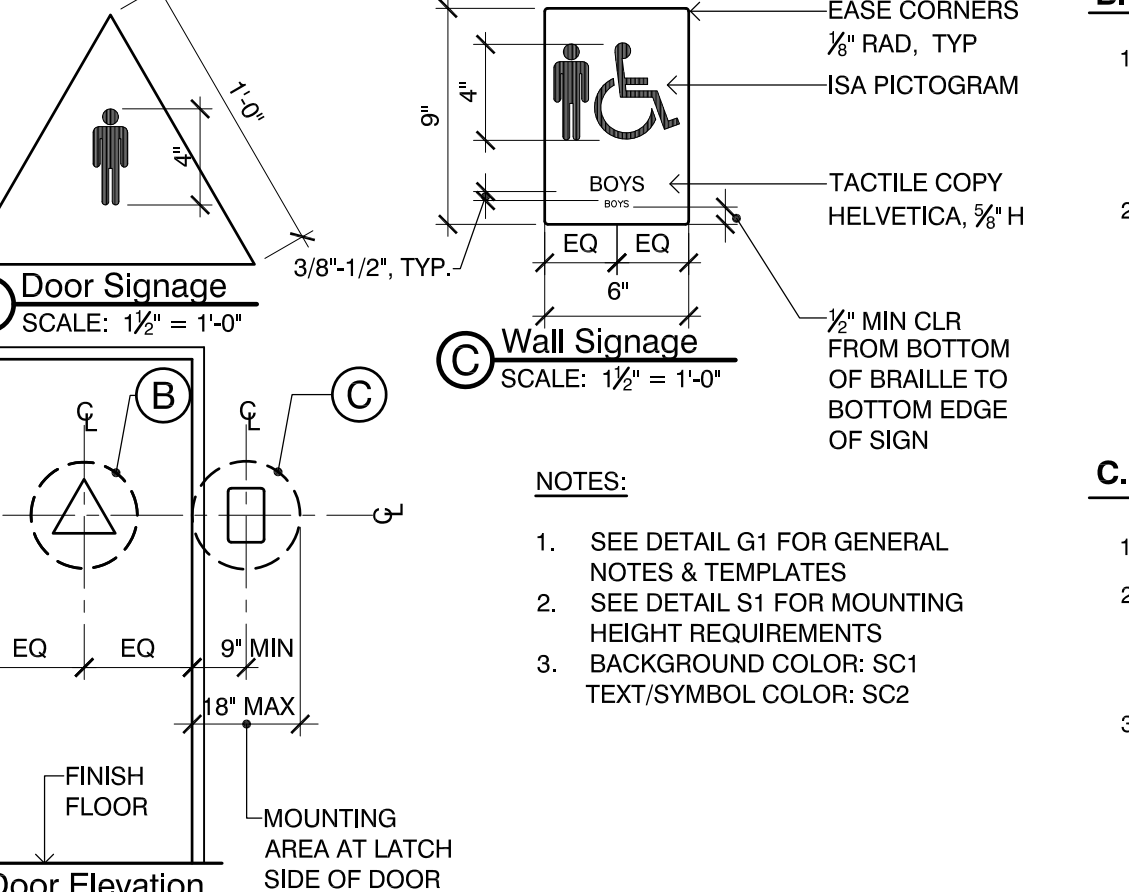
**5 Wall Detail**  
SCALE: 3" = 1'-0"



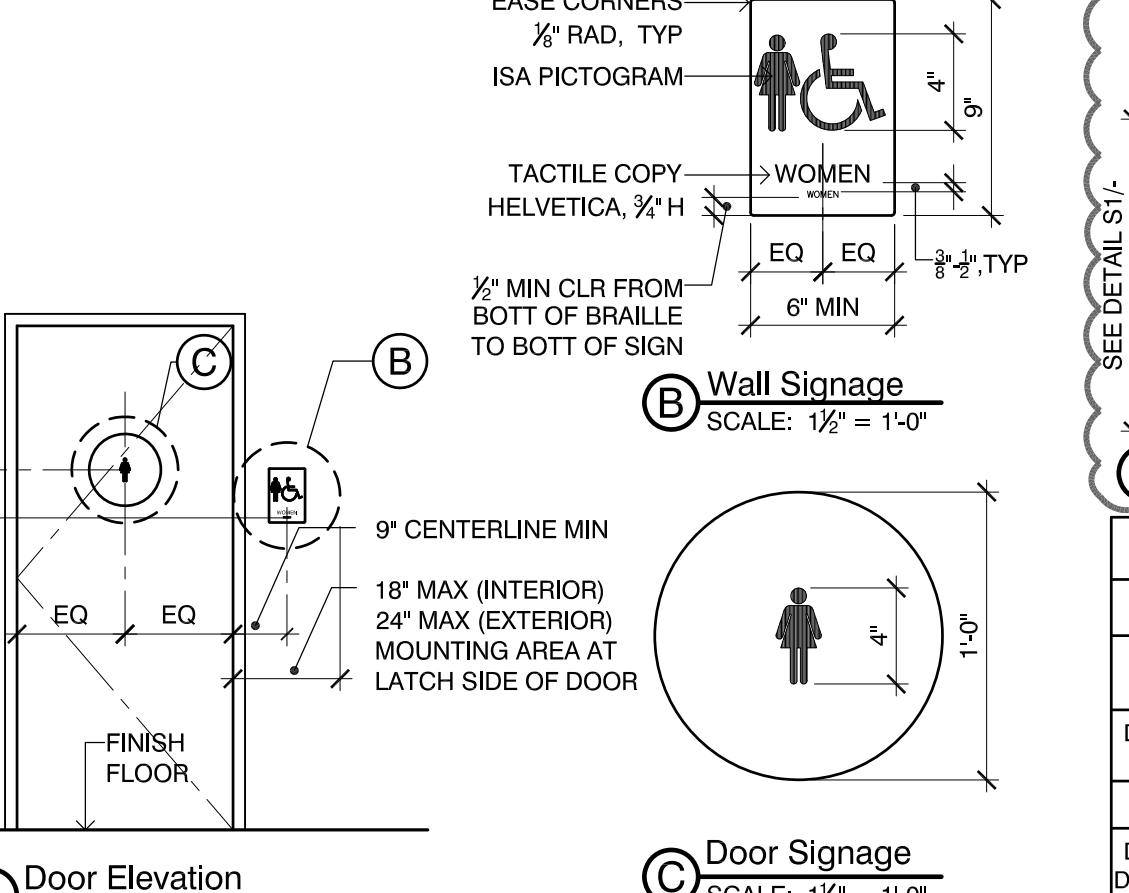
**6 Wall Detail**  
SCALE: 3" = 1'-0"



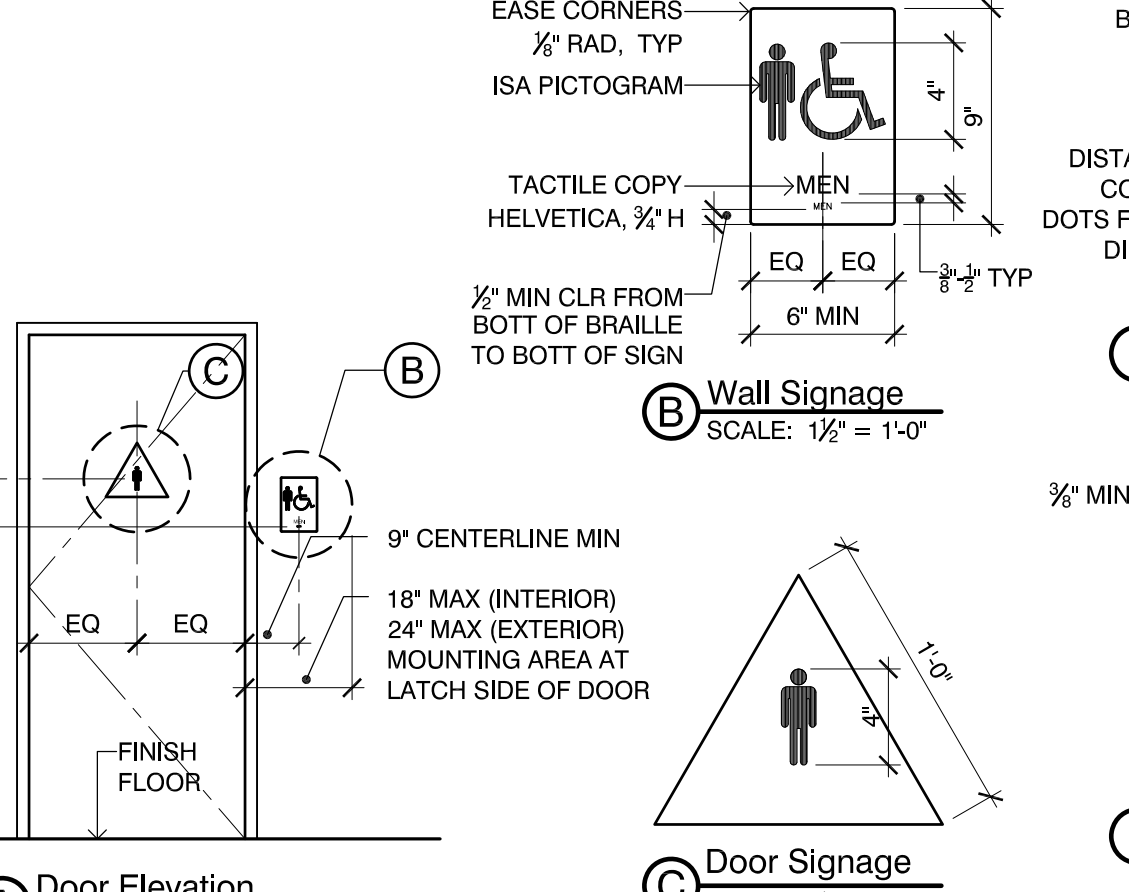
**S2 Girls Restroom Signage**  
SCALE: AS NOTED



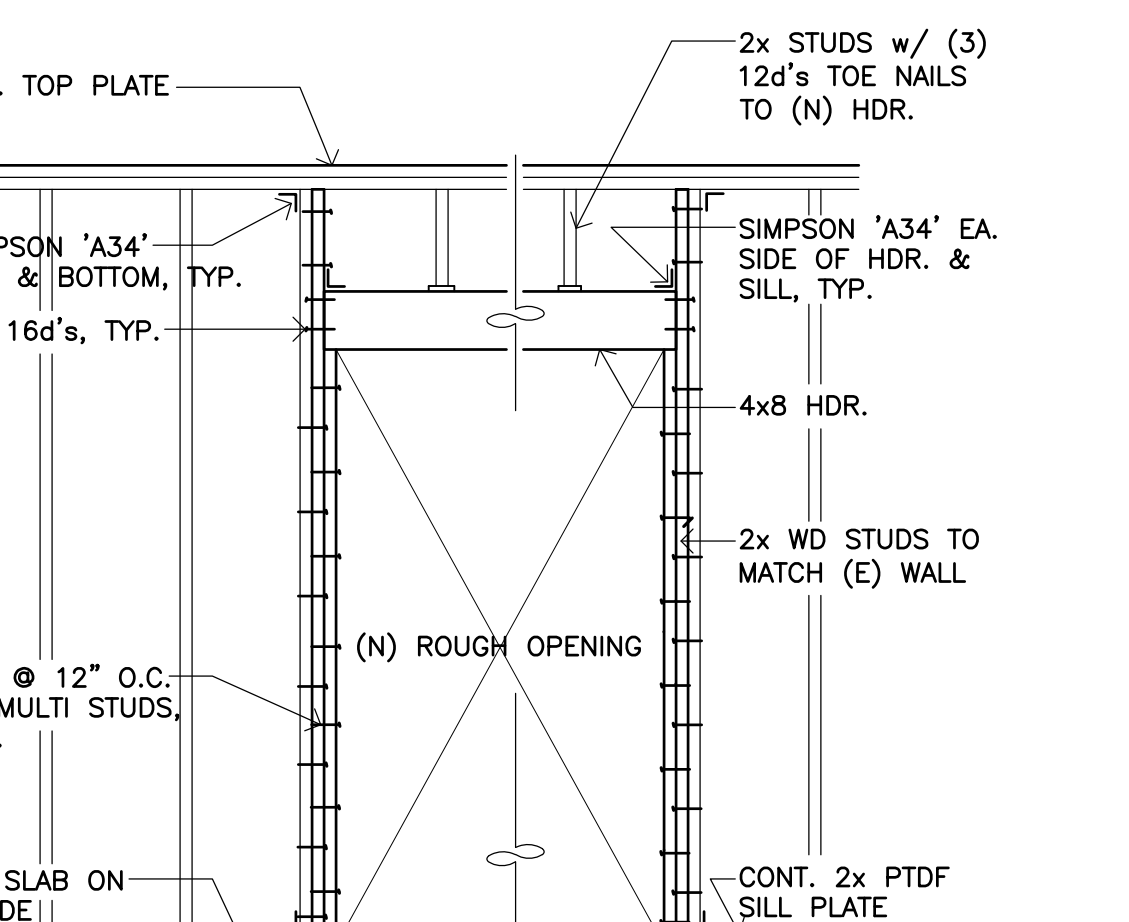
**S3 Boys Restroom Signage**  
SCALE: AS NOTED



**S4 Womens Restroom Signage**  
SCALE: AS NOTED



**S5 Mens Restroom Signage**  
SCALE: AS NOTED



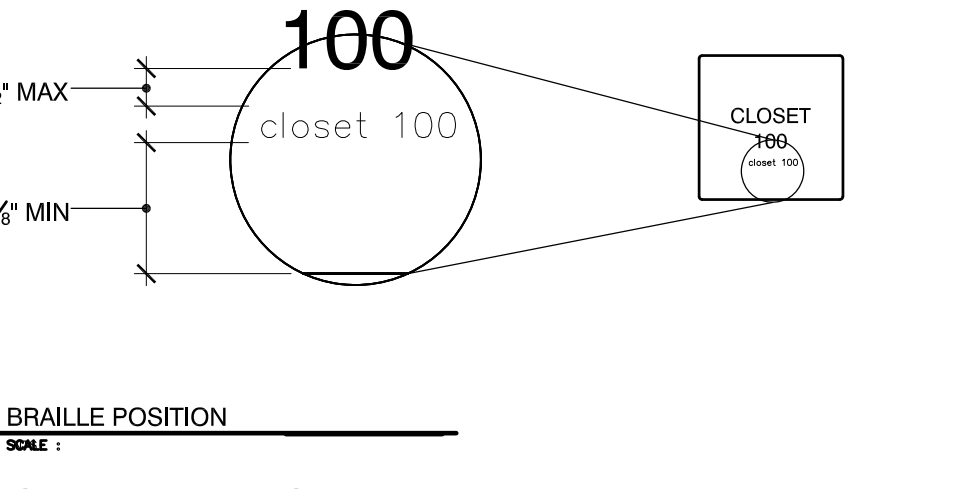
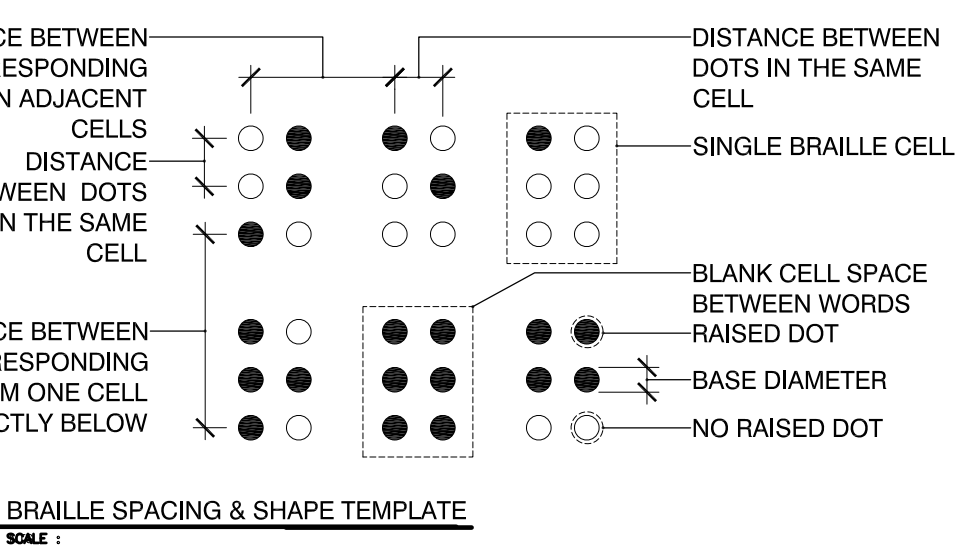
**1 (N) Door Framing Detail**  
SCALE: N.T.S.

- A. RAISED CHARACTERS PER CBC 11B-703.2**
- DEPTH: RAISED CHARACTERS SHALL BE 1/4" MINIMUM ABOVE THEIR BACKGROUND.
  - CASE: CHARACTERS SHALL BE UPPERCASE.
  - STYLE: CHARACTERS SHALL BE SANS SERIF. CHARACTERS SHALL NOT BE ITALIC, OBLIQUE, SCRIPT, HIGHLY DECORATIVE, OR OF OTHER UNUSUAL FORMS.
  - CHARACTER PROPORTIONS: CHARACTERS SHALL BE SELECTED FROM FONTS WHERE THE WIDTH OF THE UPPERCASE LETTER 'I' IS 60% MINIMUM AND 110% MAXIMUM OF THE HEIGHT OF THE UPPERCASE LETTER 'T'.
  - CHARACTER HEIGHT: CHARACTER HEIGHT MEASURED VERTICALLY FROM THE BASELINE OF THE CHARACTER SHALL BE 1/2" MINIMUM AND 2" MAXIMUM BASED ON THE HEIGHT OF THE UPPERCASE LETTER 'T'.
  - STROKE THICKNESS: STROKE THICKNESS OF THE UPPERCASE LETTER 'I' SHALL BE 15% MAXIMUM OF THE HEIGHT OF THE CHARACTER.
  - CHARACTER SPACING: CHARACTER SPACING SHALL BE MEASURED BETWEEN THE TWO CLOSEST POINTS OF ADJACENT RAISED CHARACTERS WITHIN A MESSAGE, EXCLUDING WORD SPACES, WHERE CHARACTERS HAVE RECTANGULAR CROSS SECTIONS. SPACING BETWEEN INDIVIDUAL RAISED CHARACTERS SHALL BE 1/4" MIN AND 4 TIMES THE RAISED CHARACTER STROKE WIDTH MAXIMUM. WHERE CHARACTERS HAVE OTHER CROSS SECTIONS, SPACING BETWEEN INDIVIDUAL RAISED CHARACTERS SHALL BE 1/4" MIN AND 4 TIMES THE RAISED CHARACTER STROKE WIDTH MAX AT THE BASE OF THE CROSS SECTIONS, AND 1/2" MINIMUM AND 4 TIMES THE RAISED CHARACTER STROKE WIDTH MAXIMUM AT THE TOP OF THE CROSS SECTIONS. CHARACTERS SHALL BE SEPARATED FROM RAISED BORDERS AND DECORATIVE ELEMENTS 1/4" MIN.
  - LINE SPACING: SPACING BETWEEN THE BASELINES OF SEPARATE LINES OF RAISED CHARACTERS WITHIN A MESSAGE SHALL BE 150% MINIMUM AND 170% MAXIMUM OF THE RAISED CHARACTER HEIGHT.
  - FORMAT: TEXT SHALL BE IN A HORIZONTAL FORMAT.

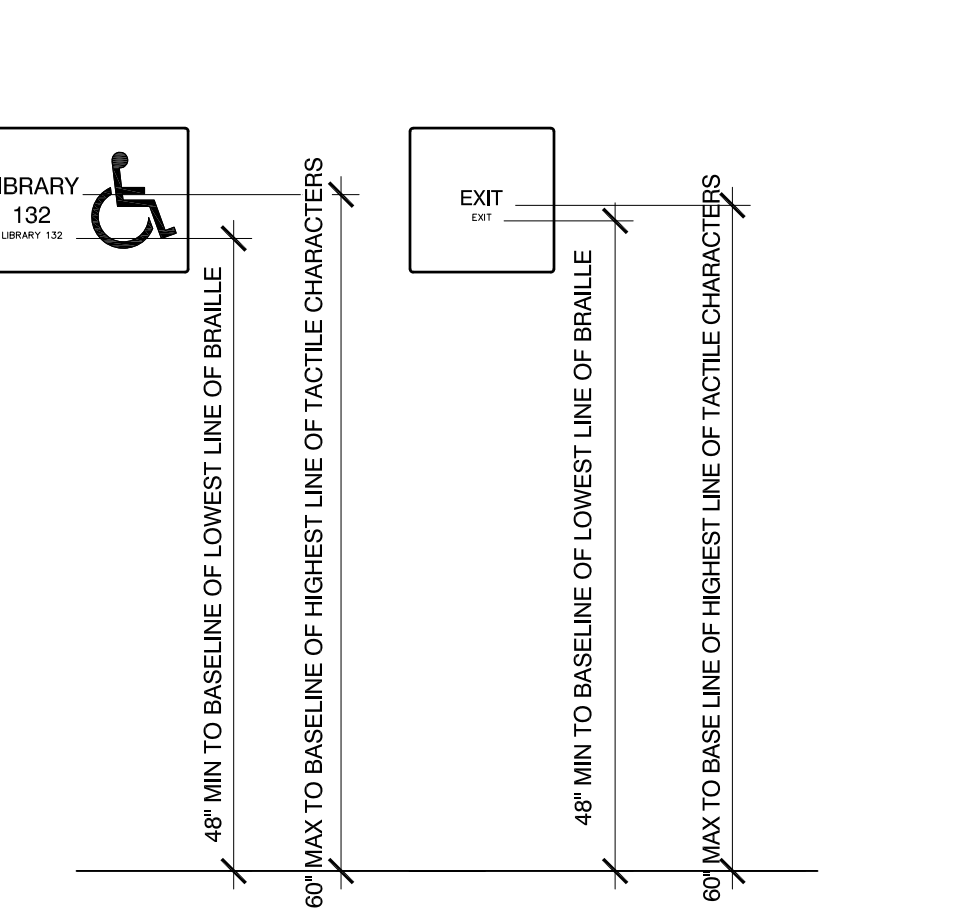
- B. BRAILLE: CONTRACTED (GRADE 2) PER 11B-703.3 & 11B-703.4**
- DIMENSIONS AND CAPITALIZATION: BRAILLE DOTS SHALL HAVE A DOMED OR ROUNDED SHAPE AND SHALL COMPLY WITH TABLE 11B-703.3.1. THE INDICATION OF AN UPPERCASE LETTER OR LETTERS SHALL ONLY BE USED BEFORE THE FIRST WORD OF SENTENCES, PROPER NOUNS AND NAMES, INDIVIDUAL LETTERS OF THE ALPHABET, INITIALS, AND ACRONYMS.
  - POSITION: BRAILLE SHALL BE POSITIONED BELOW THE CORRESPONDING TEXT IN A HORIZONTAL FORMAT, FLUSH LEFT OR CENTERED. IF TEXT IS MULTI-LINED, BRAILLE SHALL BE PLACED BELOW THE ENTIRE TEXT. BRAILLE SHALL BE SEPARATED 1/2" MINIMUM AND 1/2" MAXIMUM FROM ANY OTHER TACTILE CHARACTERS AND 1/2" MIN FROM RAISED BORDERS AND DECORATIVE ELEMENTS. EXCEPTION: BRAILLE PROVIDED ON ELEVATOR CAR CONTROLS SHALL BE SEPARATED BY 1/2" MINIMUM AND SHALL BE LOCATED EITHER DIRECTLY BELOW THE CORRESPONDING RAISED CHARACTERS OR SYMBOLS.
- C. VISUAL CHARACTERS PER CBC 11B-703.5**
- SHALL COMPLY WITH CBC 11B-703.2 & 11B-703.3
  - FINISH & CONTRAST: CHARACTERS AND THEIR BACKGROUND SHALL HAVE A NON-GLARE FINISH. CHARACTERS SHALL CONTRAST WITH THEIR BACKGROUND WITH EITHER LIGHT CHARACTERS ON A DARK BACKGROUND OR DARK CHARACTERS ON A LIGHT BACKGROUND.
  - STROKE THICKNESS: STROKE THICKNESS OF THE UPPERCASE LETTER 'I' SHALL BE 10% MINIMUM AND 20% MAXIMUM OF THE HEIGHT OF THE CHARACTER.

MEASUREMENT RANGE      MINIMUM IN INCHES  
MAXIMUM IN INCHES

DOT BASE DIAMETER	0.059 to 0.063
DISTANCE BETWEEN TWO DOTS IN THE SAME CELL	0.100
DISTANCE BETWEEN CORRESPONDING DOTS IN ADJACENT CELLS	0.300
DOT HEIGHT	0.025 to 0.037
DISTANCE BETWEEN CORRESPONDING DOTS FROM ONE CELL DIRECTLY BELOW	0.395 to 0.400



**Signage General Notes & Templates**  
SCALE: NONE



**S1 Typ Mounting Hgt. Requirements**  
SCALE: AS NOTED

OXNARD UNION HIGH SCHOOL DISTRICT  
 HUENEME HIGH SCHOOL  
 500 W. BARD RD. OXNARD, CA 93033  
**SITE SECURITY IMPROVEMENTS**

**KBZ**  
**KRUGER BENSON ZIEMER ARCHITECTS, INC. AIA**  
 1599 FELICIA ST. SUITE 100A VENTURA, CA 93001  
 TELEPHONE (805) 650-1033  
 TODD A. JESPERSEN, AIA  
 PRINCIPAL ARCHITECT  
 JONATHAN D. LEE  
 ARCHITECTURAL ASSISTANT

All ideas, design arrangements and plans indicated or represented by this drawing are owned by and are the property of KrugerBensonZiemer, AIA, architects, and were created, edited and developed for use on, and in connection with, the specified projects. None of such ideas, designs, arrangements or plans shall be used for any other project, firm or corporation for any purpose whatsoever without the written permission of KrugerBensonZiemer.

ARCHITECTS  
 STAMP & SIGNATURE

REVISIONS	DATE	BY
REVISIONS.01	9/11/19	TJ
DATE	1/19/2019	TJ
JOB. NO.	18016	
SHEET	DETAILS	
TITLE		
SHEET		

**A-800**