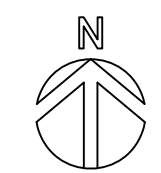


1 BUILDING 'A' FLOOR PLAN
 SCALE : 1/8" = 1'-0"

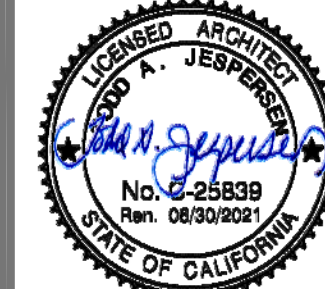


KRUGER BENSEN ZIEMER ARCHITECTS, INC. AIA
 199 FIELDFORD ST., SUITE 100A VENTURA, CA 93001
 TELEPHONE (805) 850-1033

TODD A. JESPERSEN, AIA
 PRINCIPAL/ARCHITECT
 JONATHAN D. LEE
 ARCHITECTURAL ASSISTANT

All ideas, design arrangements and plans indicated or represented by this drawing are owned by and are the property of KrugerBensenZiemer, AIA, architects, and may be copied, edited and distributed for use on, and in connection with, the specific project. None of such ideas, design, arrangements or plans shall be used by or disclosed to any person, firm or corporation for any purpose whatsoever without the written permission of KrugerBensenZiemer.

ARCHITECTS STAMP & SIGNATURE ENGINEERS STAMP & SIGNATURE

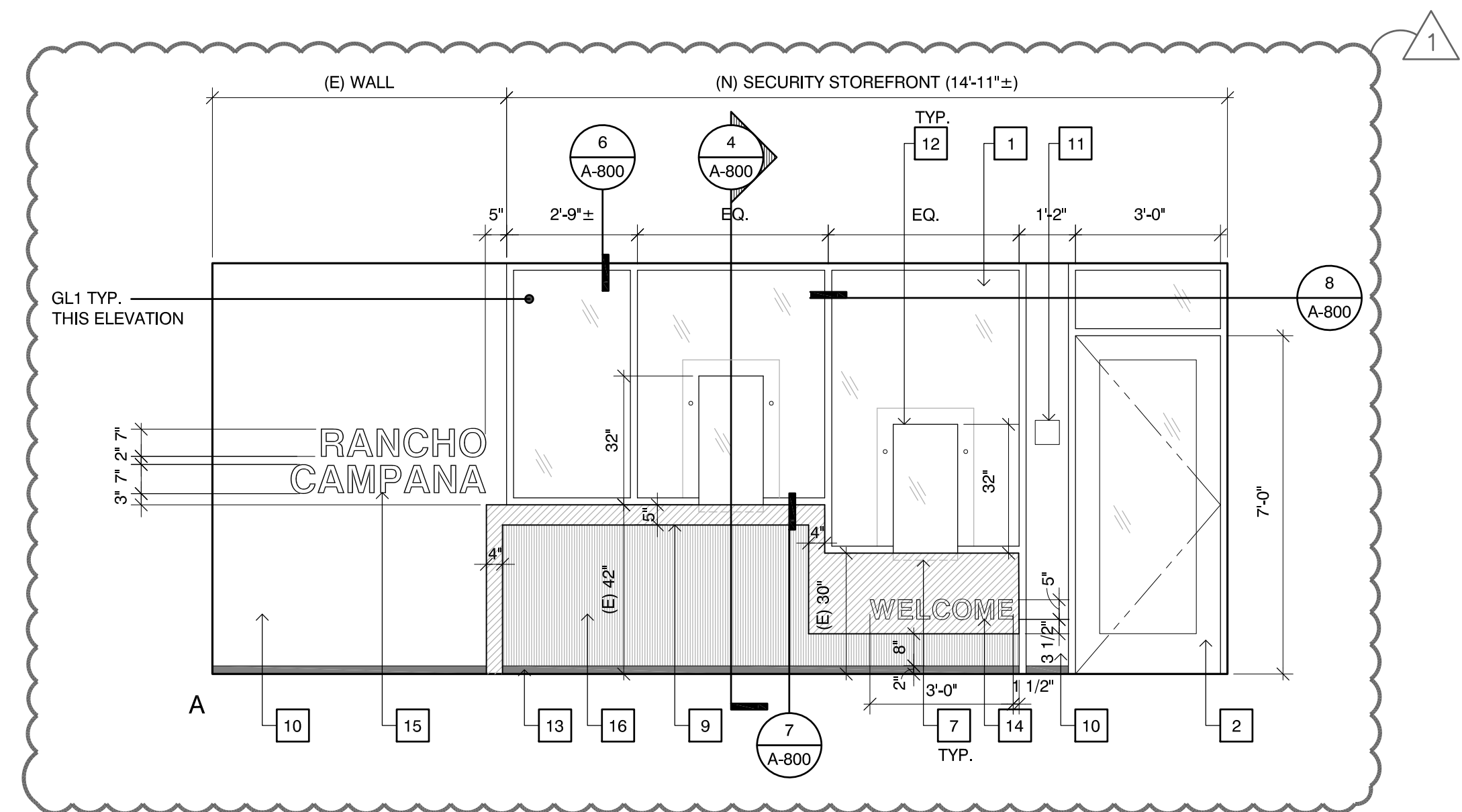


△	-	-/-	XX
△	-	-/-	XX
△	-	-/-	XX
△	-	-/-	XX
△	REVISIONS.01	9/11/19	TJ
REVISION	DESCRIPTION	DATE	BY

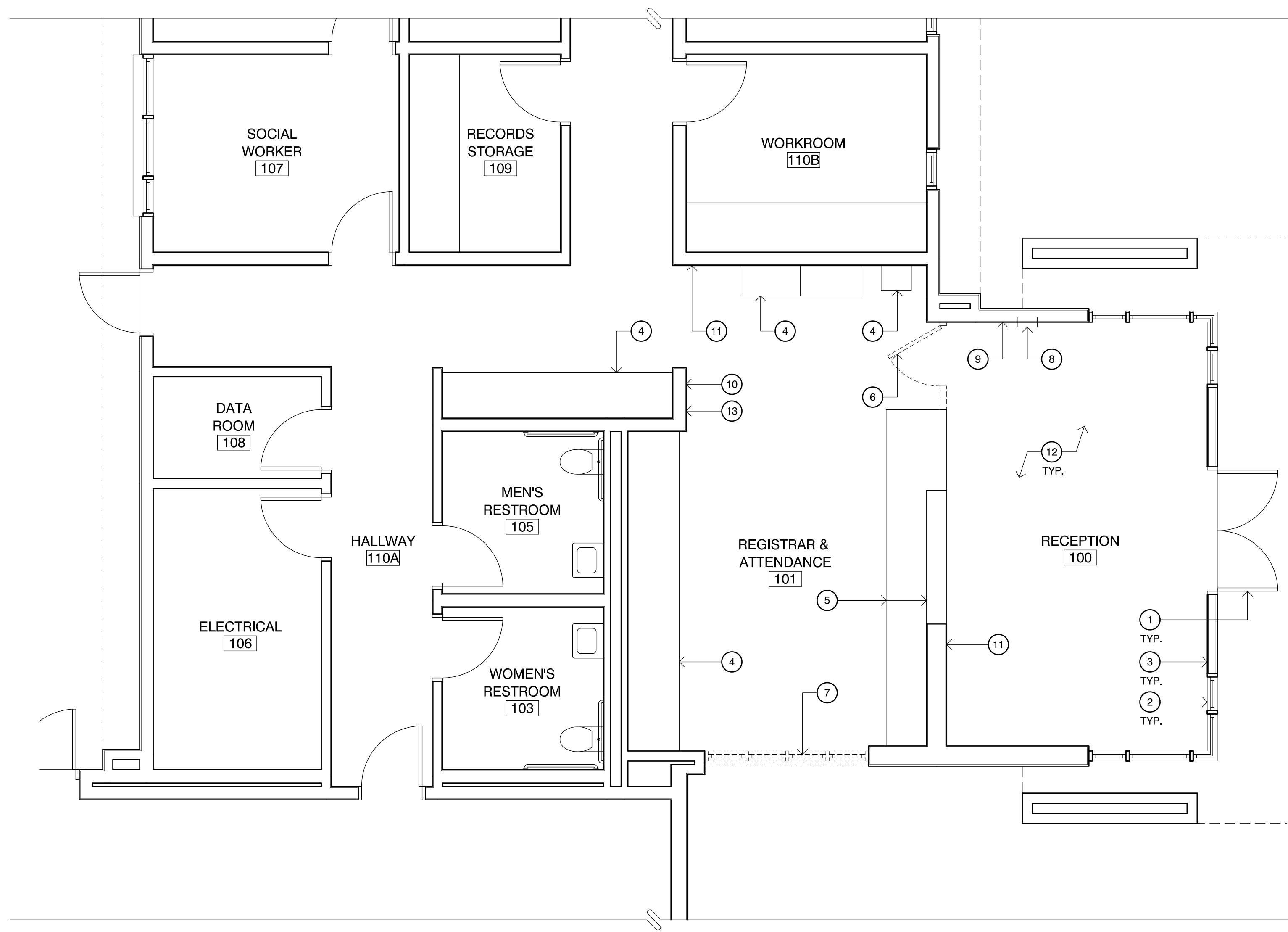
DRAWN JL
 CHECKED TJ
 DATE 6/5/2019
 JOB. NO. 18028

SHEET BUILDING 'A' FLOOR PLAN
 TITLE

SHEET A-200



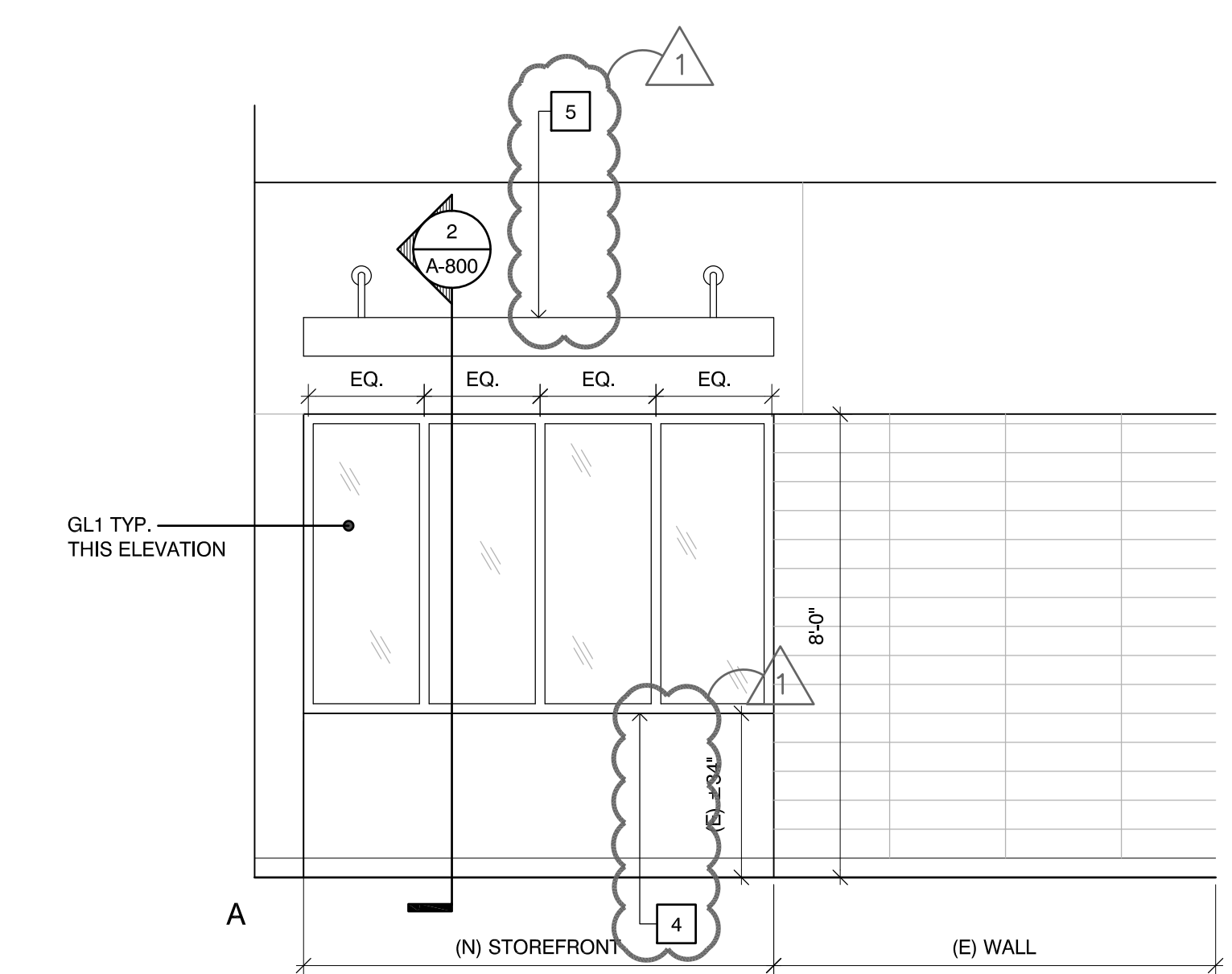
3 INTERIOR ELEVATION
 SCALE: 3/8" = 1'-0"



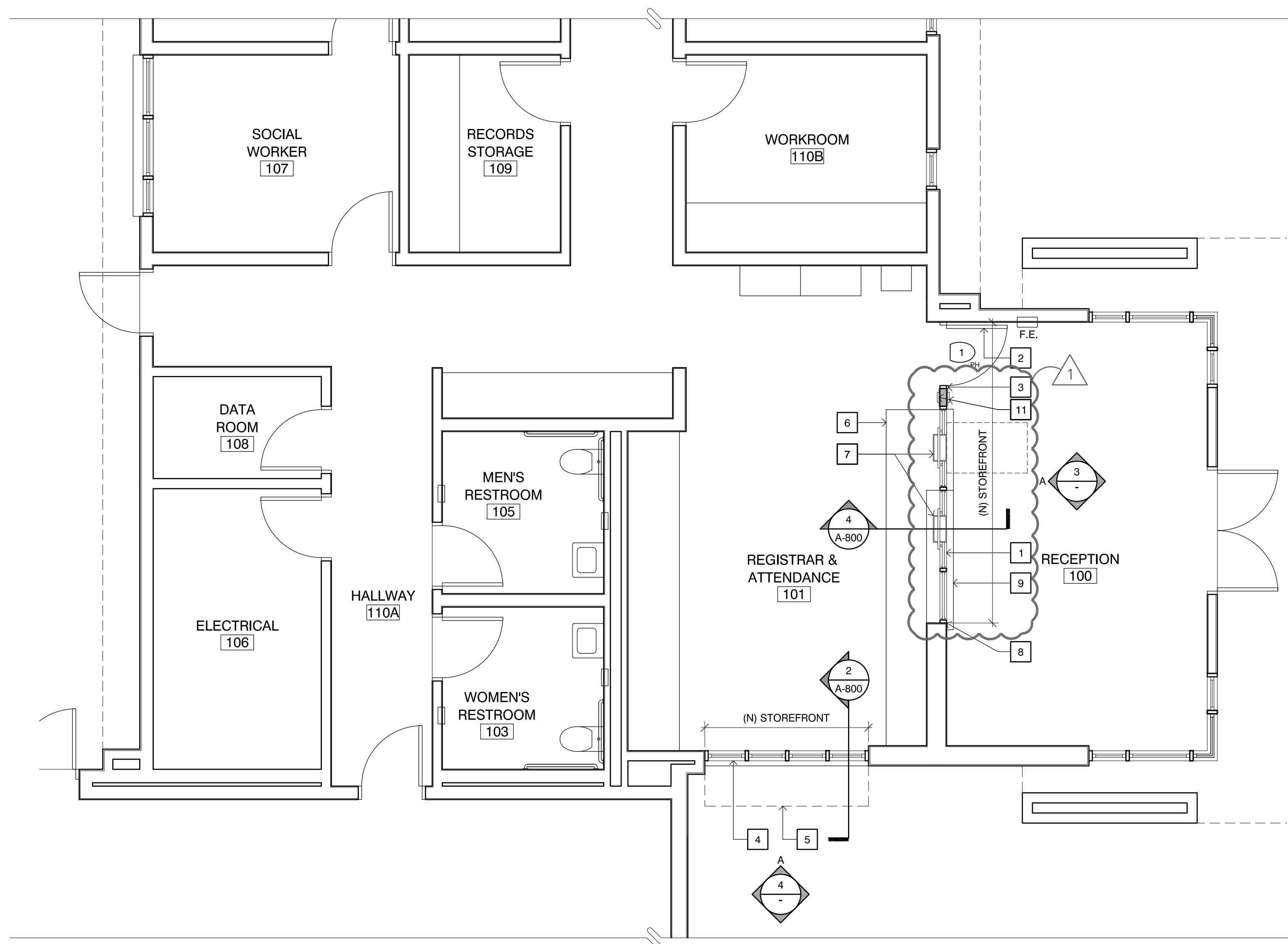
1 ENLARGED DEMO FLOOR PLAN
 SCALE: 1/4" = 1'-0"

DEMO PLAN KEYNOTES

- 1 (E) DOOR TO REMAIN
- 2 (E) WINDOW TO REMAIN
- 3 (E) WALL TO REMAIN
- 4 (E) CABINET TO REMAIN
- 5 (E) DESK WITH HI-LOW TRANSACTION COUNTERTOP TO REMAIN
- 6 REMOVE (E) DOOR
- 7 DEMO (E) WINDOW WITH TRANSACTION COUNTER
- 8 (E) FIRE EXTINGUISHER CABINET TO REMAIN
- 9 (E) WALL OUTLET TO REMAIN
- 10 (E) LIGHT SWITCH TO REMAIN
- 11 (E) FIRE ALARM HORN/STROBE TO REMAIN
- 12 (E) VCT FLOORING TO REMAIN
- 13 (E) FIRE ALARM PULL STATION TO REMAIN



4 INTERIOR ELEVATION
 SCALE: 3/8" = 1'-0"



2 ENLARGED NEW FLOOR PLAN
 SCALE: 1/4" = 1'-0"

NEW PLAN & INTERIOR ELEVATIONS KEYNOTES

- 1 (N) SECURITY STOREFRONT ASSEMBLY
- 2 (N) STOREFRONT DOOR
- 3 (N) ACCESS CARD READER @ 40" AFF
- 4 (N) PERMANENT FIXED STOREFRONT & NEW SLOPED SILL
- 5 (N) AWNING
- 6 (N) DOOR ACCESS CONTROLS MOUNT IN FACE OF (E) CABINET
- 7 (N) BULLET-TRAP RECESSED CURRENCY TRAY (REMOVE (E) SOLID SURFACE TO INSTALL)
- 8 INSTALL (N) STOREFRONT FACE FLUSH WITH (E) WALL FACE
- 9 (N) HI-LO SOLID SURFACE COUNTER
- 10 (N) GYP.BD., PAINT COLOR TBD
- 11 (N) ROOM SIGNAGE
- 12 (N) RECTANGULAR TRANSACTION WINDOW
- 13 (N) 2" DRMB ALUM. DRYWALL REVEAL BASE
- 14 (N) VINYL LETTERS ADHERED TO SOLID SURFACE COUNTER (FONT TO BE SELECTED BY ARCHITECT)
- 15 (N) VINYL LETTERS ADHERED TO WALL (FONT TO BE SELECTED BY ARCHITECT)
- 16 (N) WOOD PATTERN HIGH PRESSURE LAMINATE

LEGEND

(N) WALL, MATCH (E) ADJACENT FINISHES



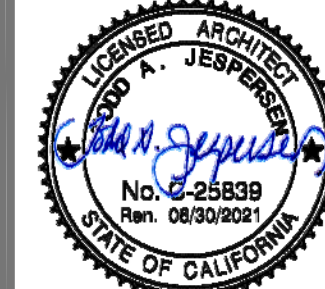
KRUGER BENSEN ZIEMER ARCHITECTS, INC. AIA
 199 FULFORD ST., SUITE 100A VENTURA, CA 93001
 TELEPHONE (805) 650-1033

TODD A. JESPERSEN, AIA
 PRINCIPAL/ARCHITECT

JONATHAN D. LEE
 ARCHITECTURAL ASSISTANT

All ideas, design arrangements and plans indicated or represented by this drawing are owned by and are the property of KrugerBensenZiemer, AIA, architects, and were created, edited and developed for use on, and in connection with, the specific project. None of such ideas, designs, arrangements or plans shall be used by or disclosed to any person, firm or corporation for any purpose whatsoever without the written permission of KrugerBensenZiemer.

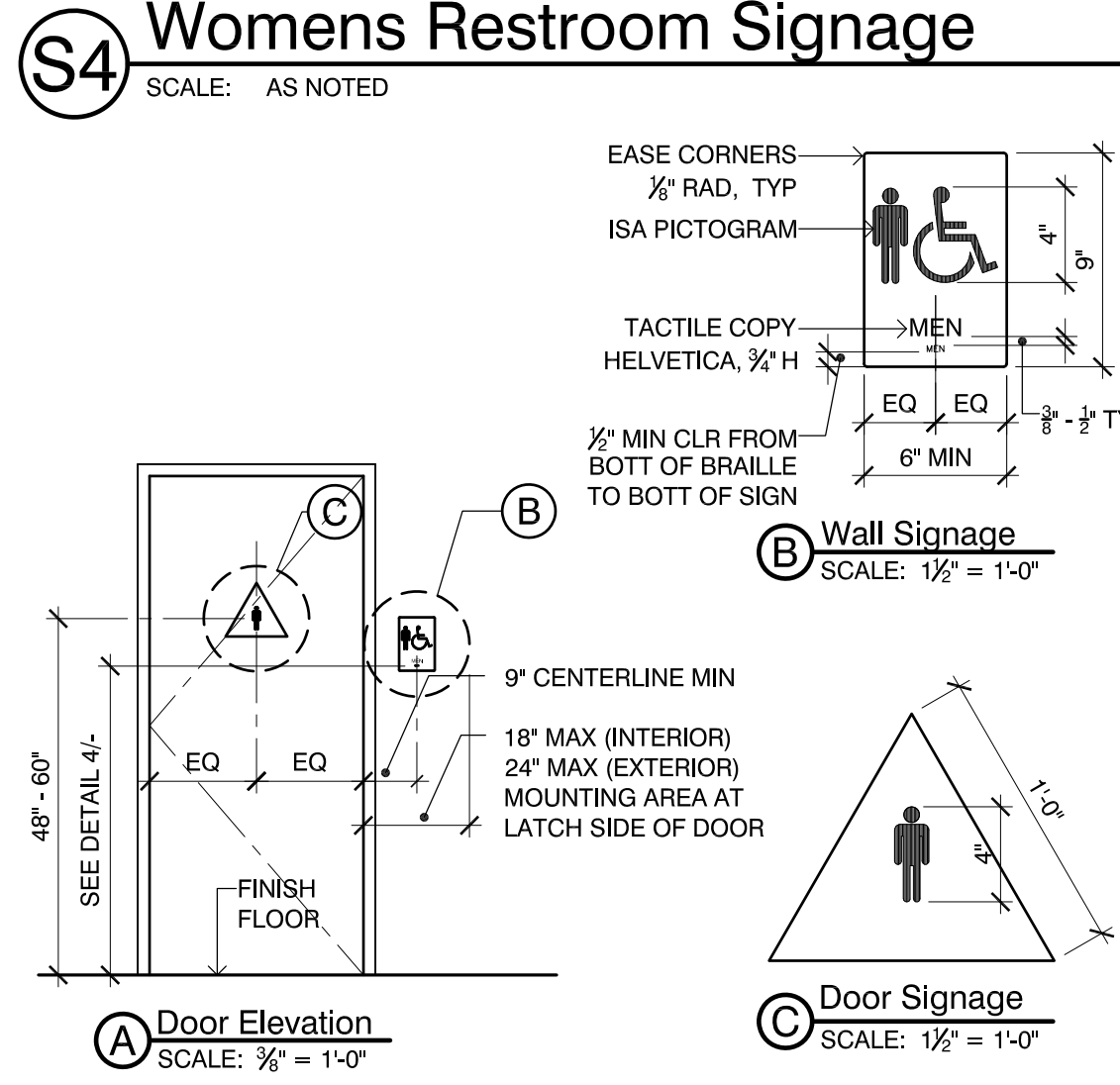
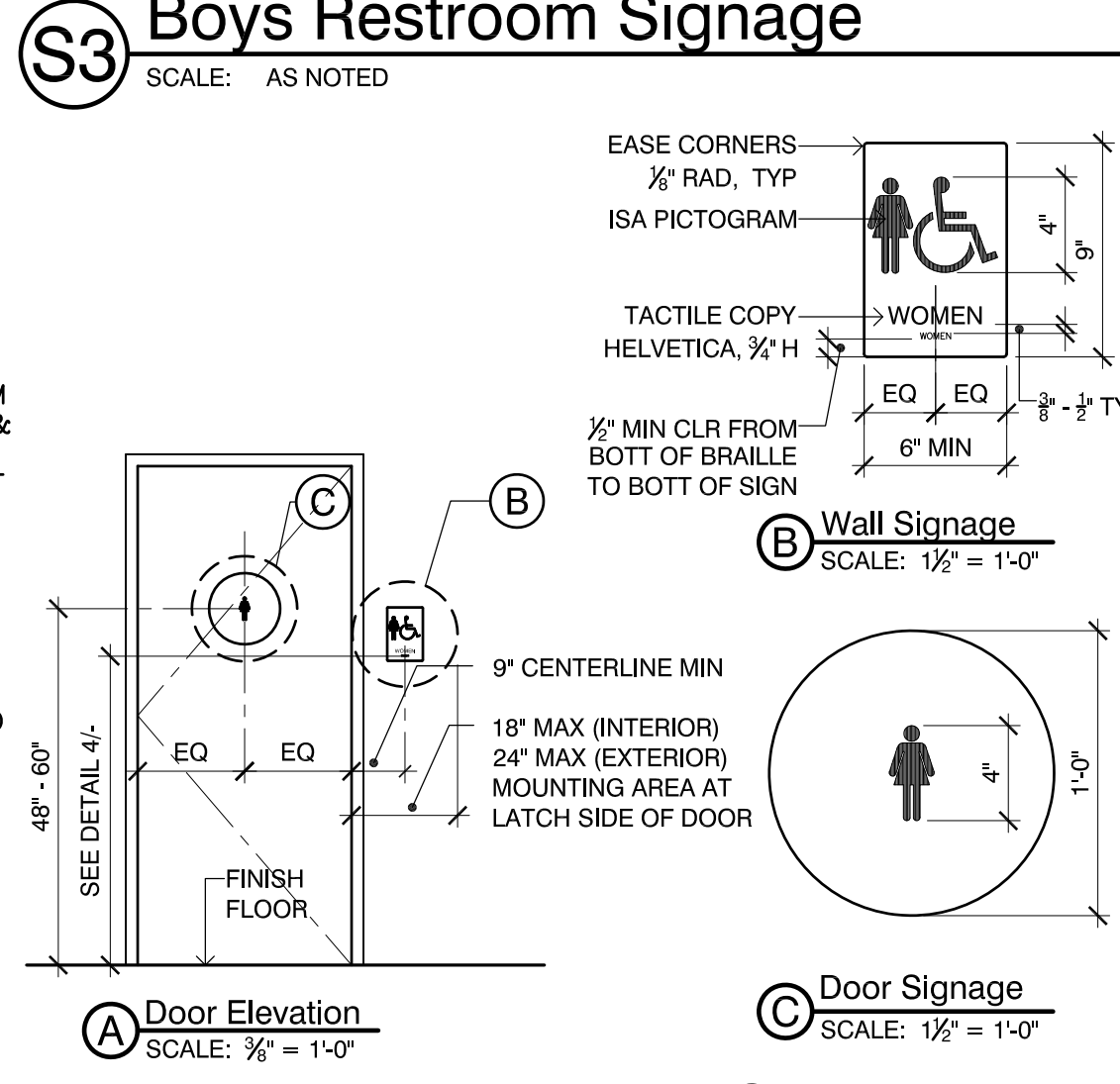
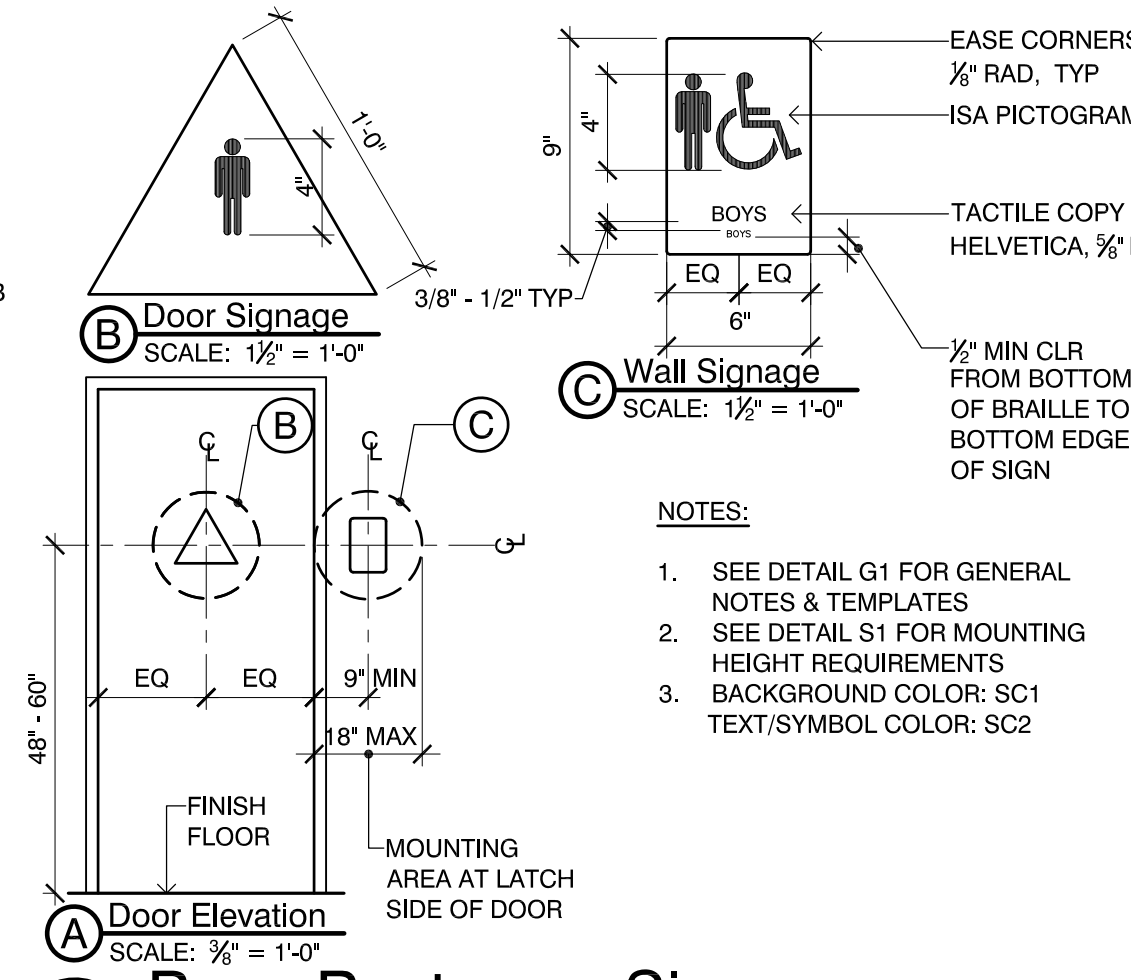
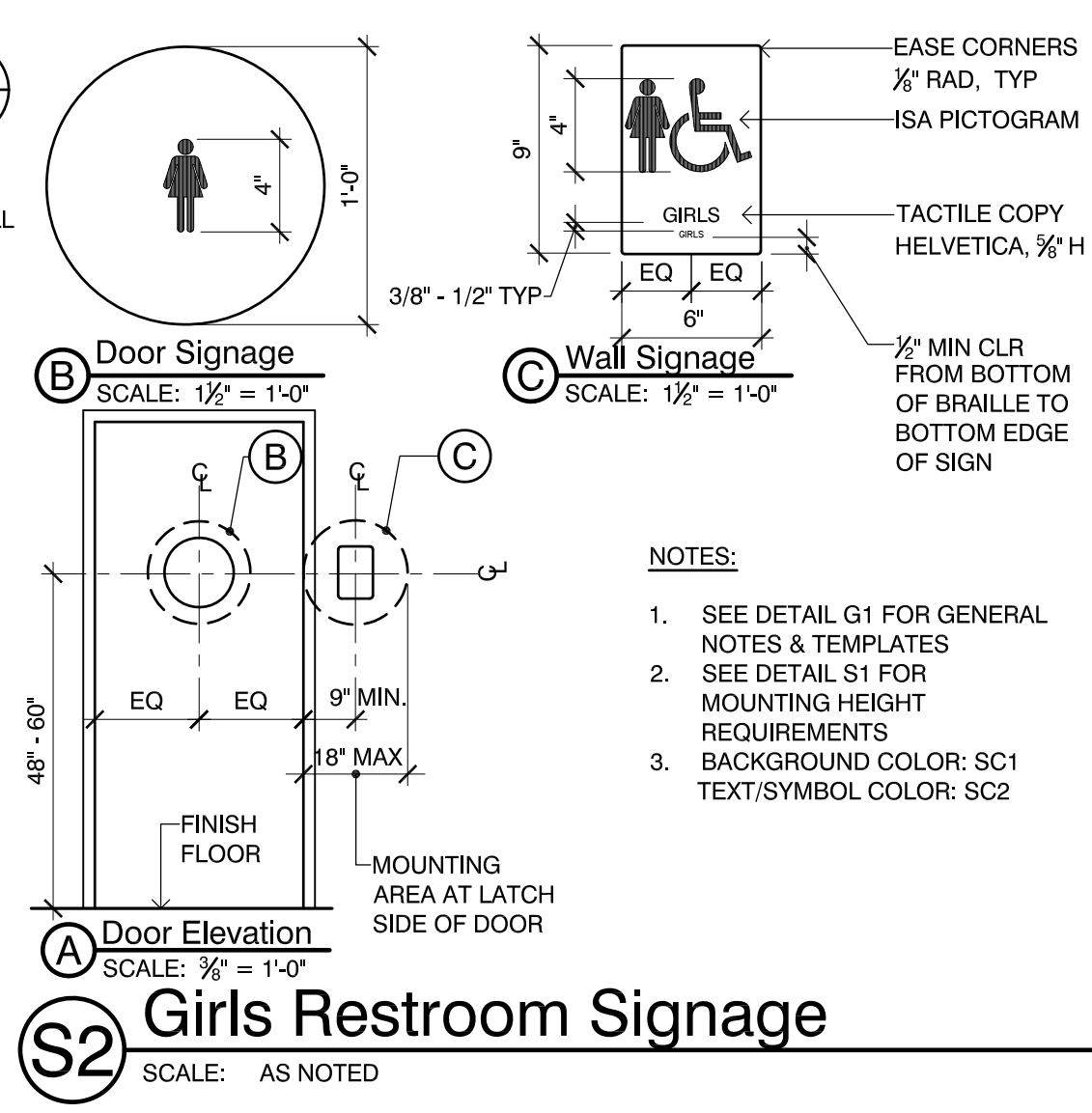
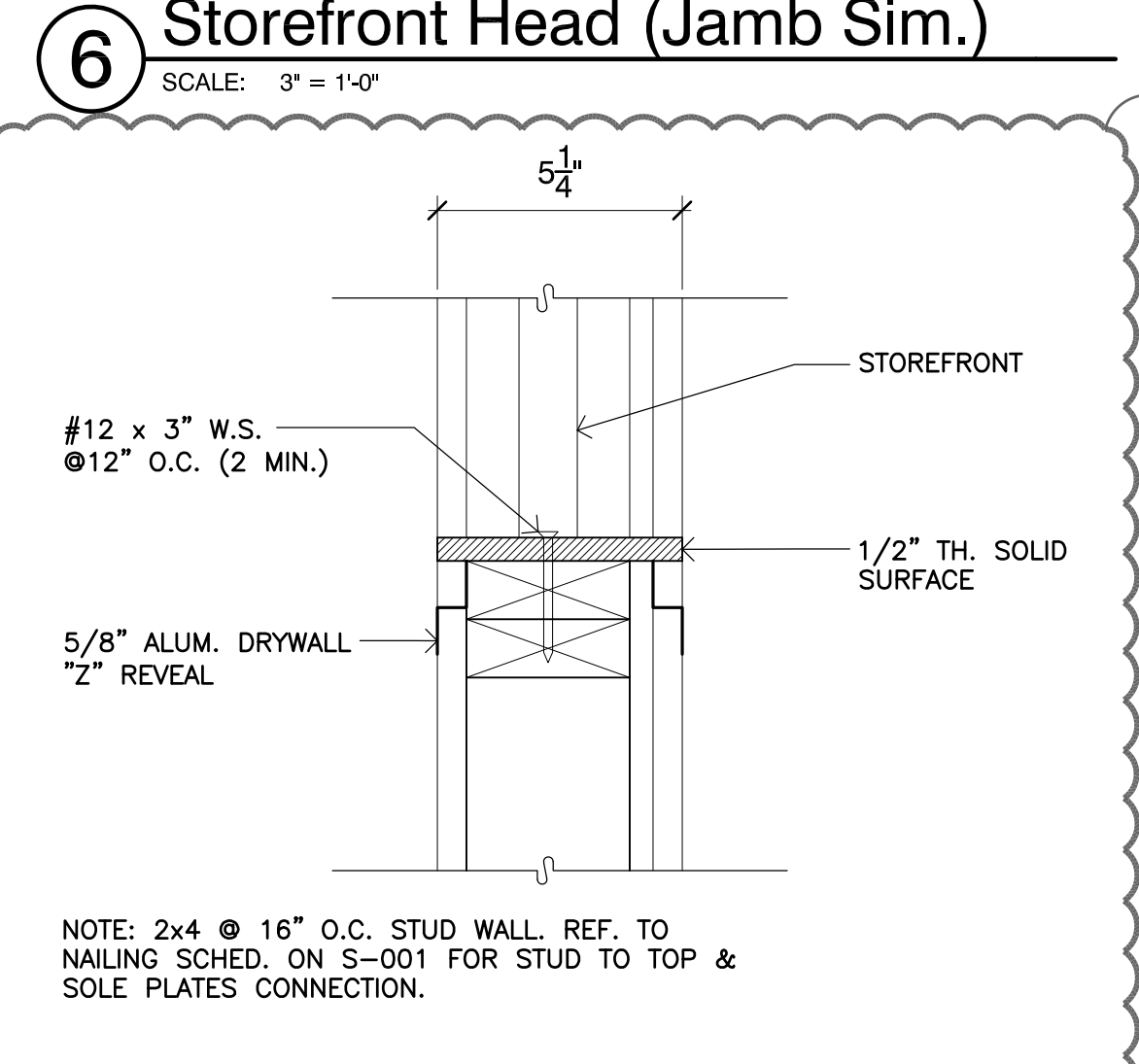
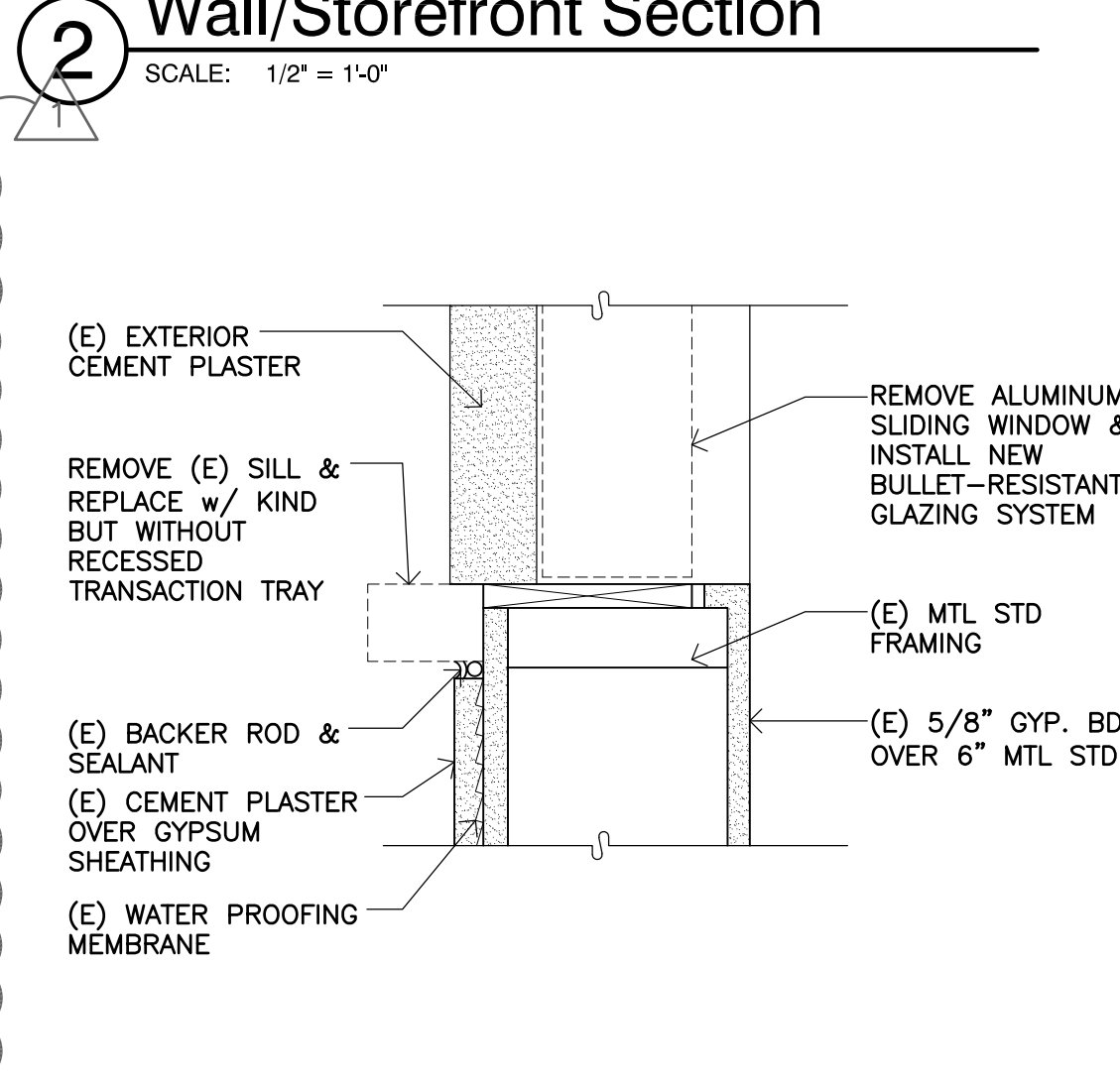
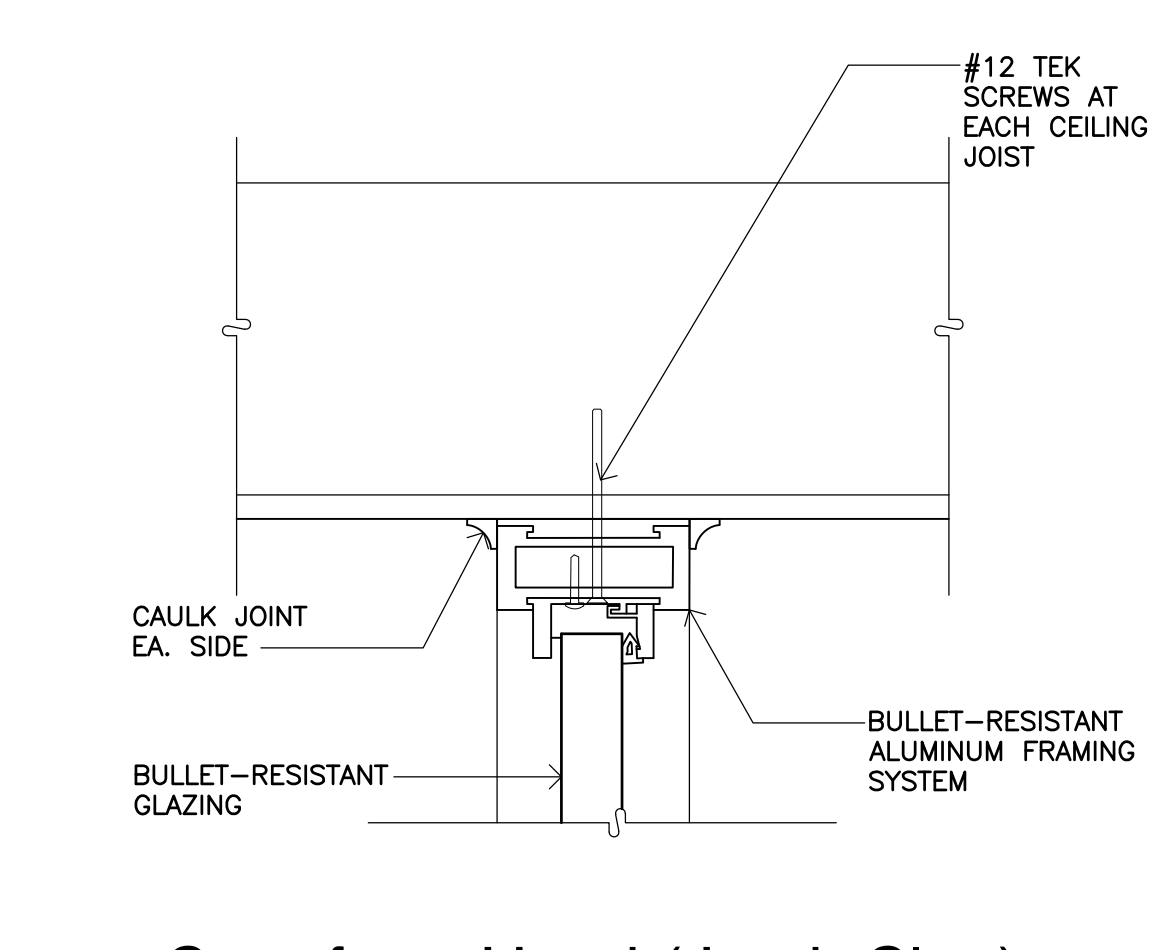
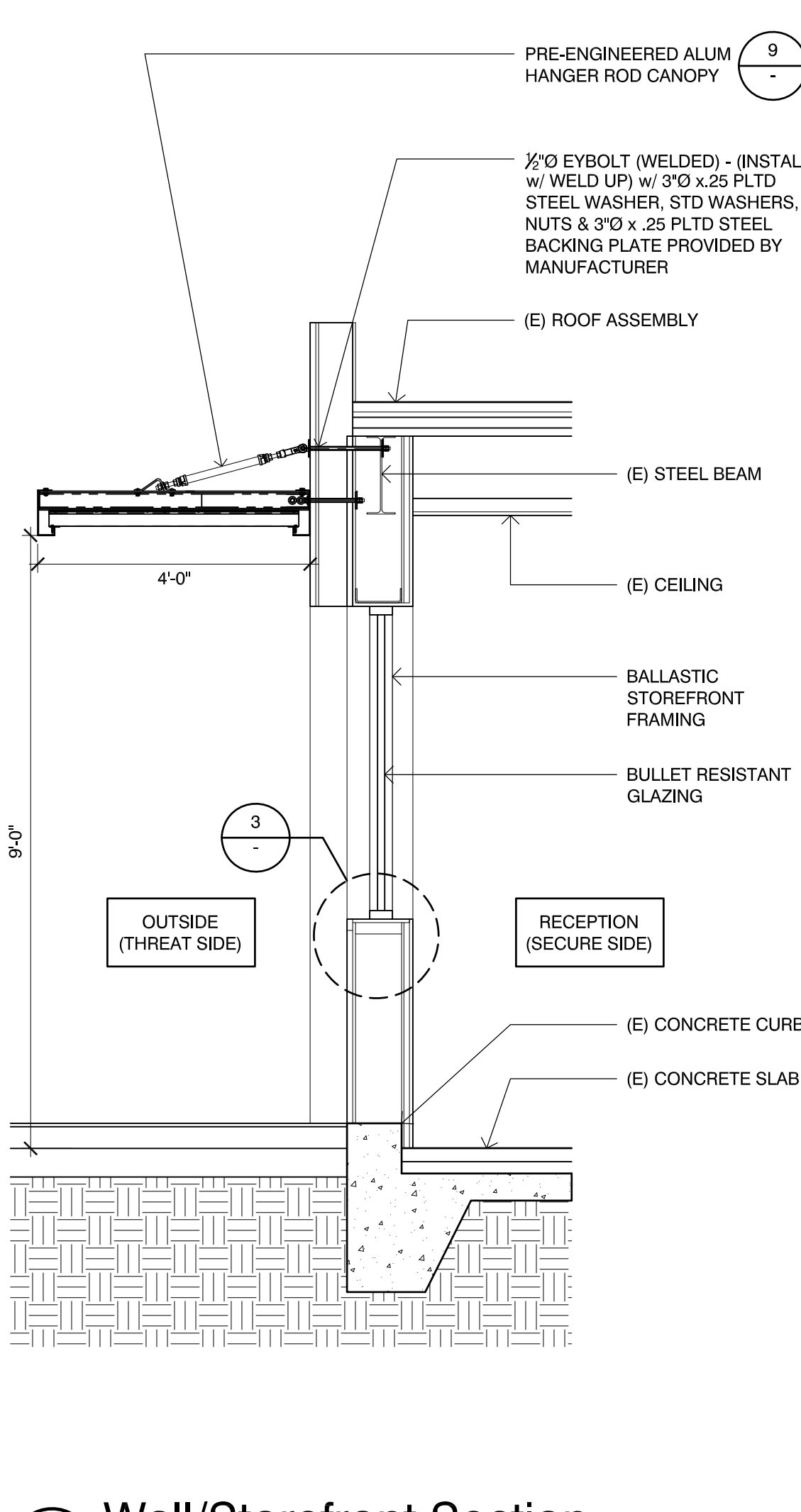
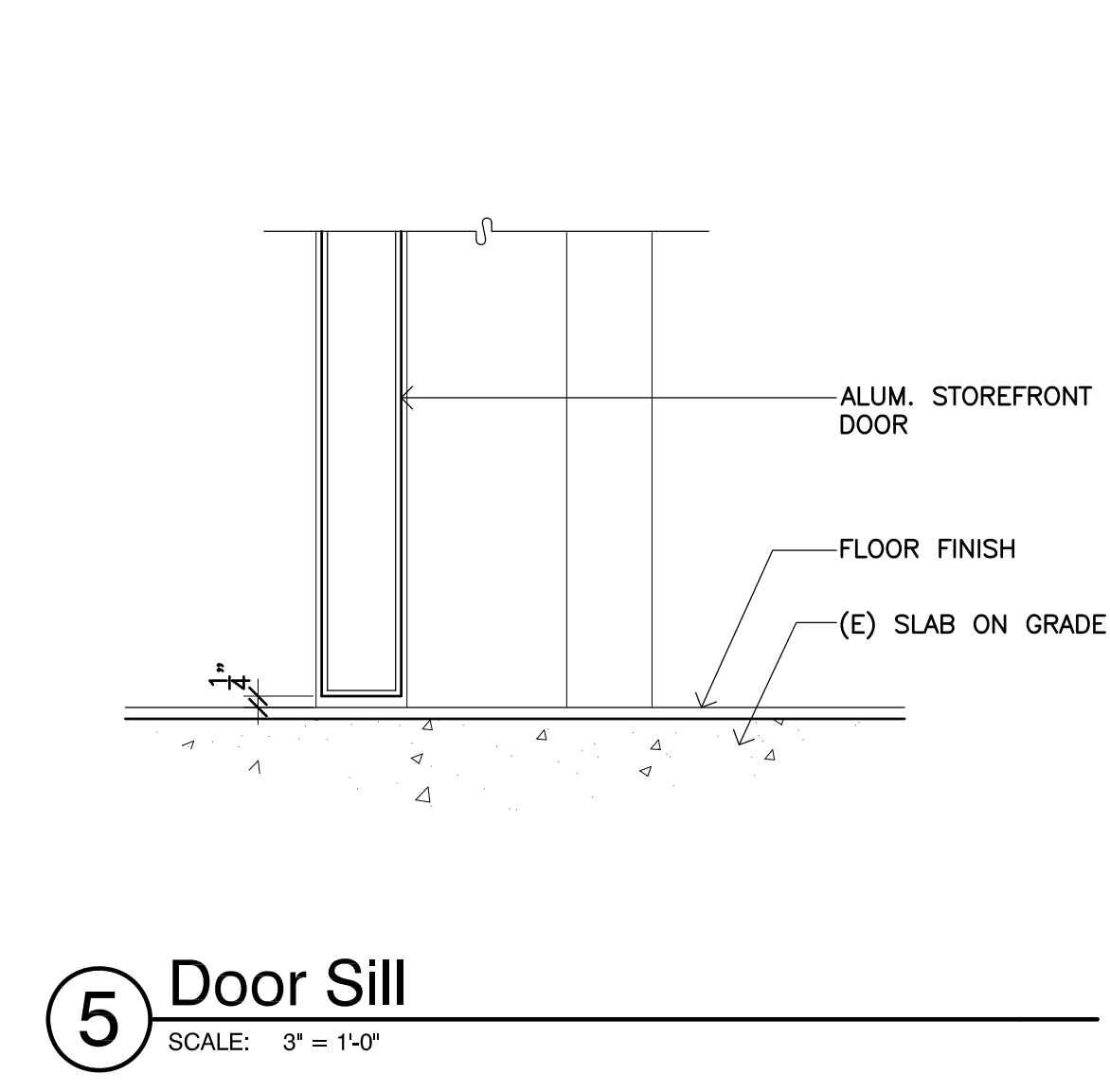
ARCHITECTS STAMP & SIGNATURE ENGINEERS STAMP & SIGNATURE



△	-	-/-	XX
△	-	-/-	XX
△	-	-/-	XX
△	-	-/-	XX
△	REVISIONS.01	9/11/19	TJ
REVISION	DESCRIPTION	DATE	BY

DRAWN JL
 CHECKED TJ
 DATE 6/5/2019
 JOB. NO. 18028

SHEET ENLARGED DEMO FLOOR PLAN
 TITLE ENLARGED NEW FLOOR PLAN
 INTERIOR ELEVATION



A. RAISED CHARACTERS PER CBC 11B-703.2

- DEPTH:** RAISED CHARACTERS SHALL BE 1/4" MINIMUM ABOVE THEIR BACKGROUND.
- CASE:** CHARACTERS SHALL BE UPPERCASE.
- STYLE:** CHARACTERS SHALL BE SANS SERIF. CHARACTERS SHALL NOT BE ITALIC, OBLIQUE, SCRIPT, HIGHLY DECORATIVE, OR OF OTHER UNUSUAL FORMS.
- CHARACTER PROPORTIONS:** CHARACTERS SHALL BE SELECTED FROM FONTS WHERE THE WIDTH OF THE UPPERCASE LETTER 'O' IS 60% MINIMUM AND 110% MAXIMUM OF THE HEIGHT OF THE UPPERCASE LETTER 'T'.
- CHARACTER HEIGHT:** CHARACTER HEIGHT MEASURED VERTICALLY FROM THE BASELINE OF THE CHARACTER SHALL BE 1/2" MINIMUM AND 2" MAXIMUM BASED ON THE HEIGHT OF THE UPPERCASE LETTER 'T'.
- STROKE THICKNESS:** STROKE THICKNESS OF THE UPPERCASE LETTER 'I' SHALL BE 15% MAXIMUM OF THE HEIGHT OF THE CHARACTER.
- CHARACTER SPACING:** CHARACTER SPACING SHALL BE MEASURED BETWEEN THE TWO CLOSEST POINTS OF ADJACENT RAISED CHARACTERS WITHIN A MESSAGE, EXCLUDING WORD SPACES, WHERE CHARACTERS HAVE RECTANGULAR CROSS SECTIONS. SPACING BETWEEN INDIVIDUAL RAISED CHARACTERS SHALL BE 1/2" MINIMUM AND 4 TIMES THE RAISED CHARACTER STROKE WIDTH MAXIMUM, WHERE CHARACTERS HAVE OTHER CROSS SECTIONS. SPACING BETWEEN INDIVIDUAL RAISED CHARACTERS SHALL BE 1/2" MIN AND 4 TIMES THE RAISED CHARACTER STROKE WIDTH MAX AT THE BASE OF THE CROSS SECTIONS, AND 1/2" MINIMUM AND 4 TIMES THE RAISED CHARACTER STROKE WIDTH MAXIMUM AT THE TOP OF THE CROSS SECTIONS. CHARACTERS SHALL BE SEPARATED FROM RAISED BORDERS AND DECORATIVE ELEMENTS 1/2" MIN.
- LINE SPACING:** SPACING BETWEEN THE BASELINES OF SEPARATE LINES OF RAISED CHARACTERS WITHIN A MESSAGE SHALL BE 135% MINIMUM AND 170% MAXIMUM OF THE RAISED CHARACTER HEIGHT.
- FORMAT:** TEXT SHALL BE IN A HORIZONTAL FORMAT.

B. BRAILLE: CONTRACTED (GRADE 2) PER 11B-703.3 & 11B-703.4

- DIMENSIONS AND CAPITALIZATION:** BRAILLE DOTS SHALL HAVE A DOMED OR ROUNDED SHAPE AND SHALL COMPLY WITH TABLE 11B-703.3.1. THE INDICATION OF AN UPPERCASE LETTER OR LETTERS SHALL ONLY BE USED BEFORE THE FIRST WORD OF SENTENCES, PROPER NOUNS AND NAMES, INDIVIDUAL LETTERS OF THE ALPHABET, INITIALS, AND ACRONYMS.
- POSITION:** BRAILLE SHALL BE POSITIONED BELOW THE CORRESPONDING TEXT IN A HORIZONTAL FORMAT, FLUSH LEFT OR CENTERED. IF TEXT IS MULTI-LINED, BRAILLE SHALL BE PLACED BELOW THE ENTIRE TEXT. BRAILLE SHALL BE SEPARATED 1/2" MINIMUM AND 1/2" MAXIMUM FROM ANY OTHER TACTILE CHARACTERS AND 1/2" MIN FROM RAISED BORDERS AND DECORATIVE ELEMENTS. EXCEPTION: BRAILLE PROVIDED ON ELEVATOR CAR CONTROLS SHALL BE SEPARATED BY 1/2" MINIMUM AND SHALL BE LOCATED EITHER DIRECTLY BELOW THE CORRESPONDING RAISED CHARACTERS OR SYMBOLS.

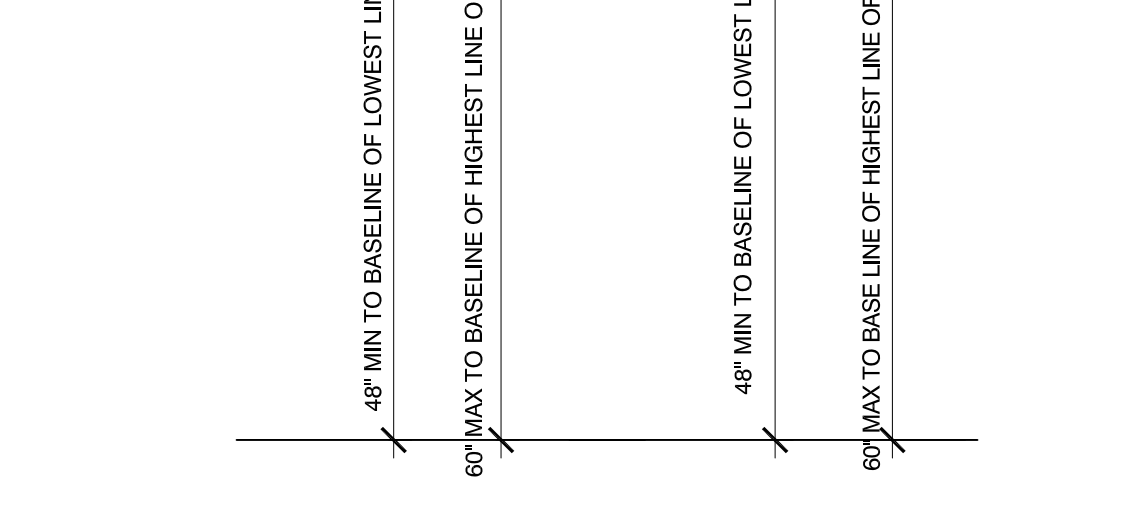
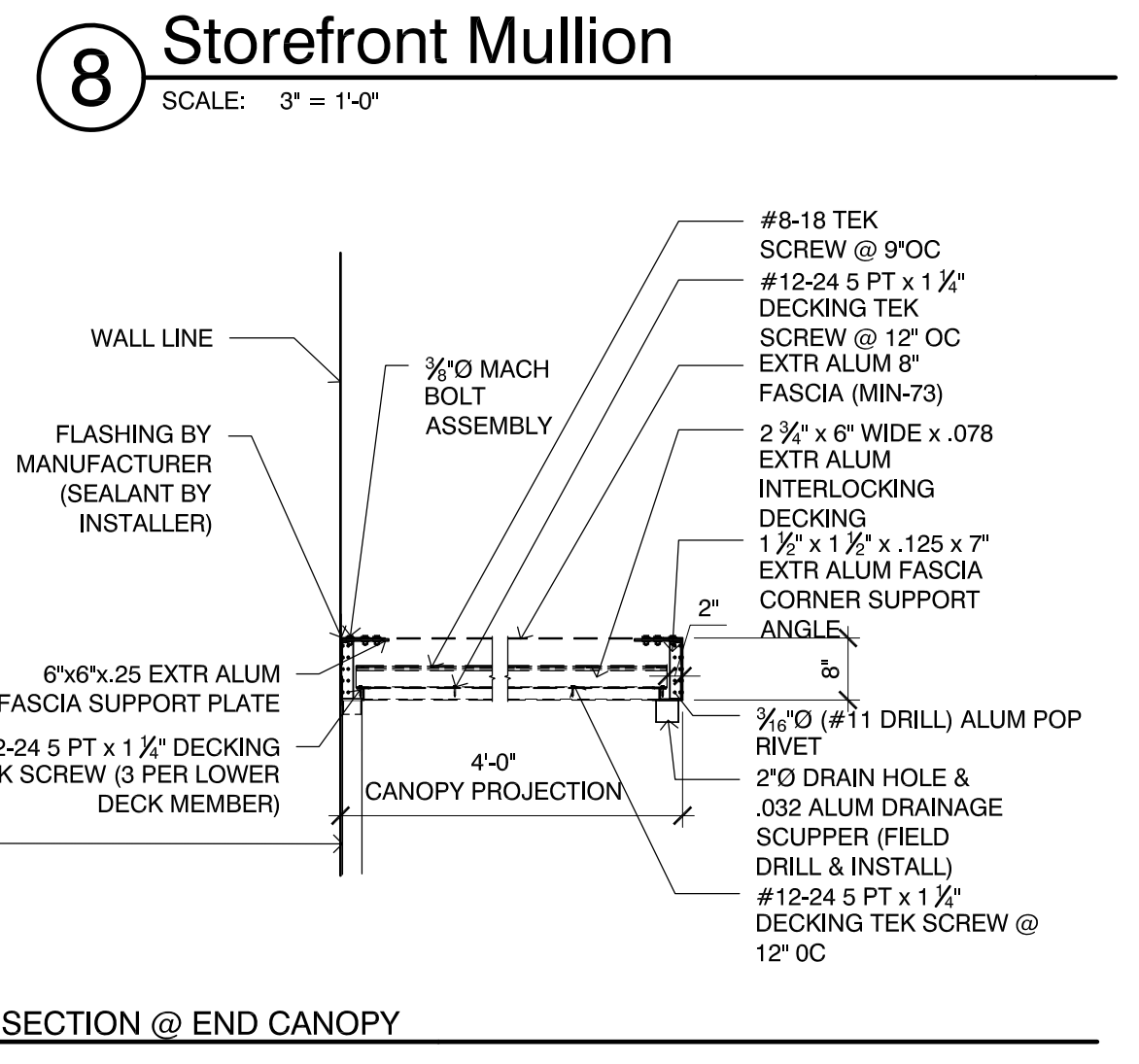
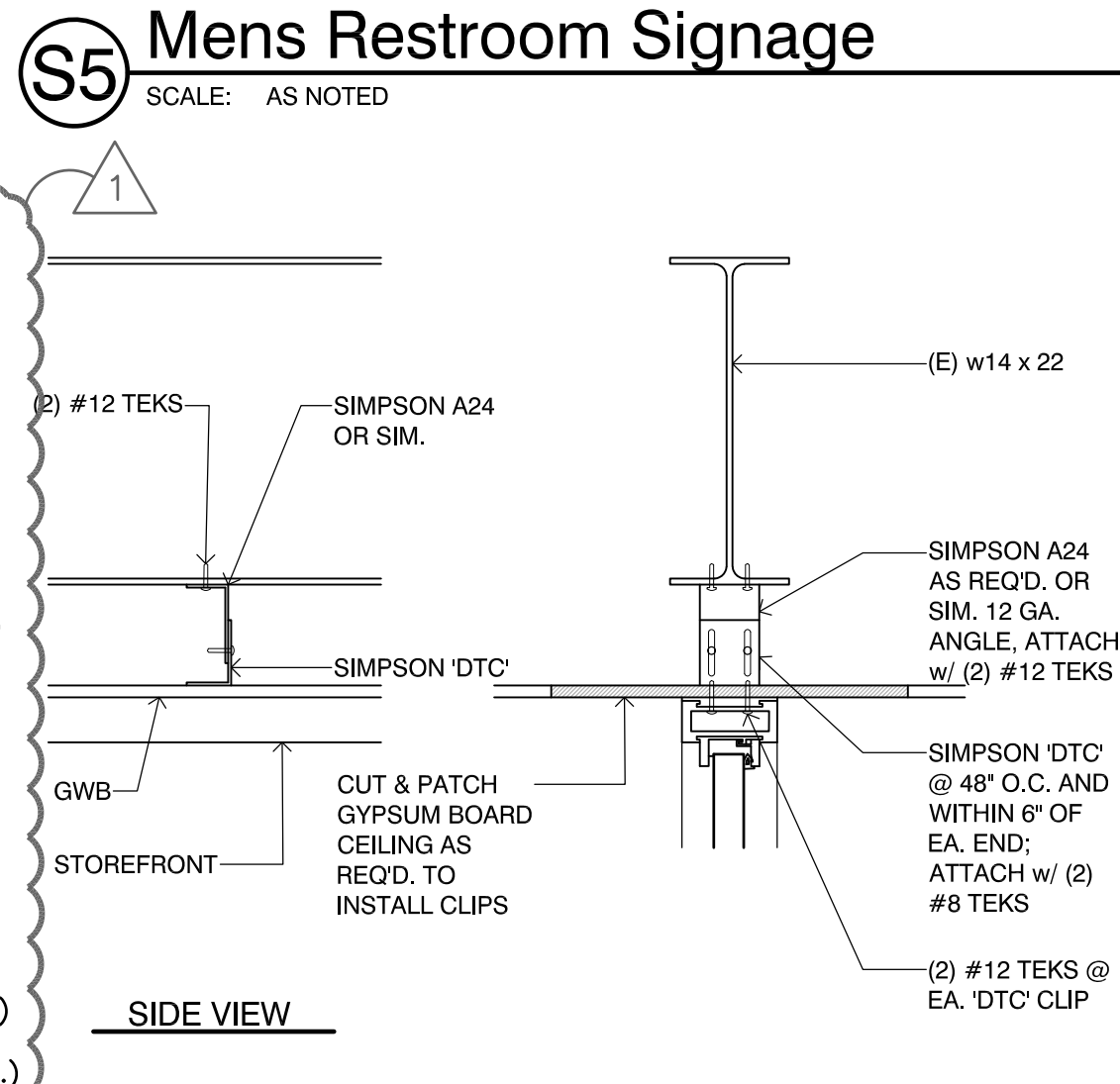
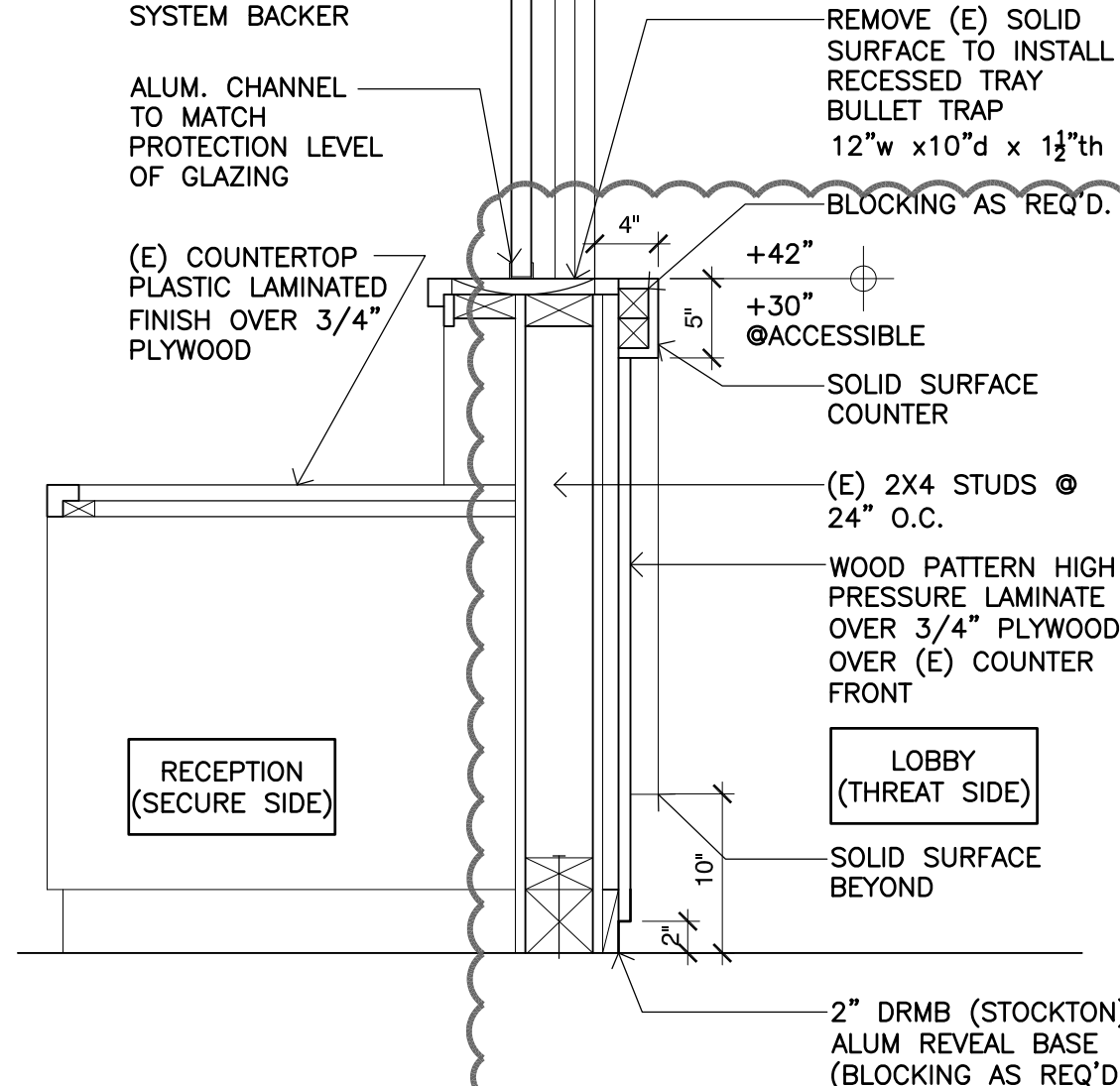
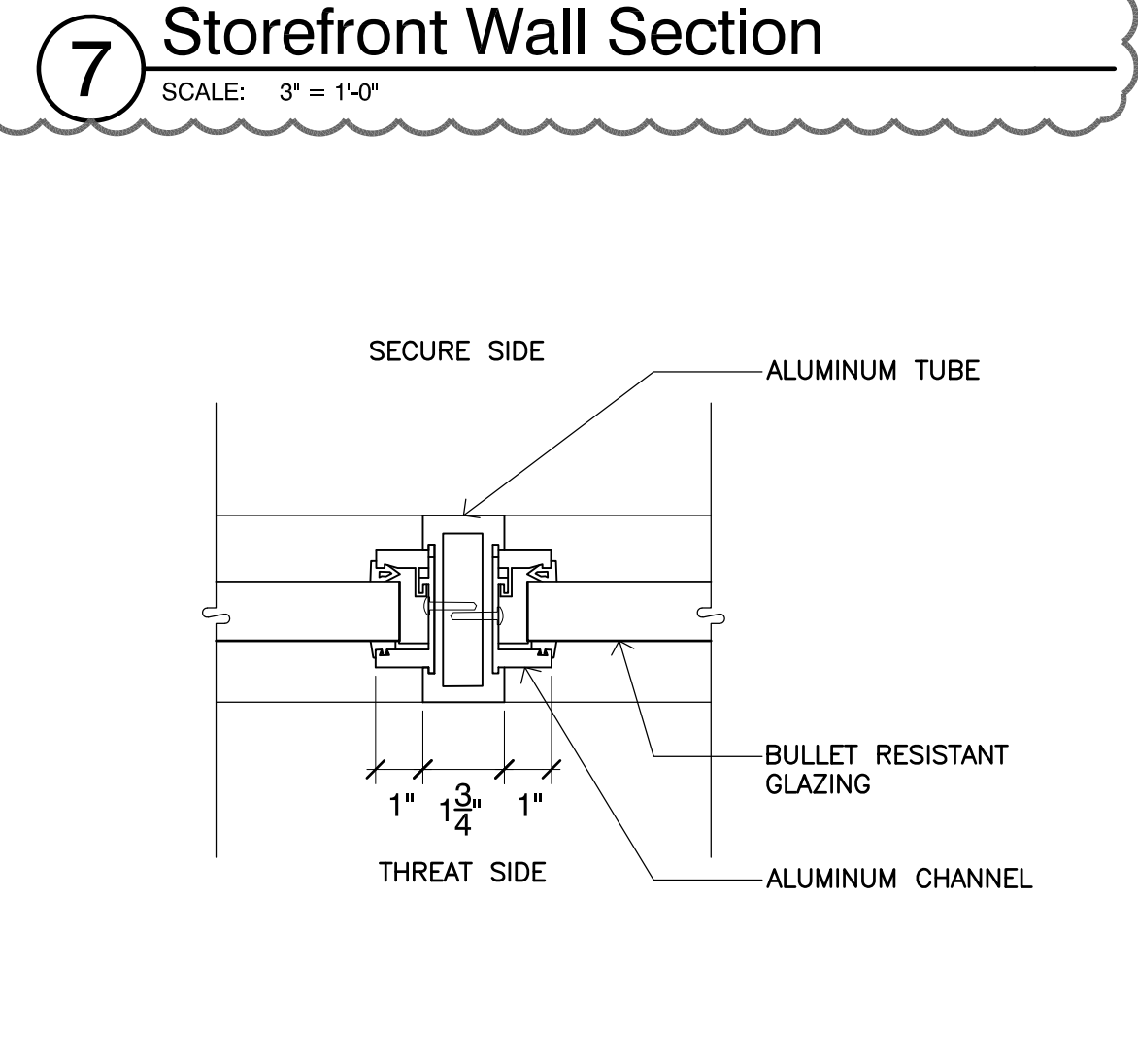
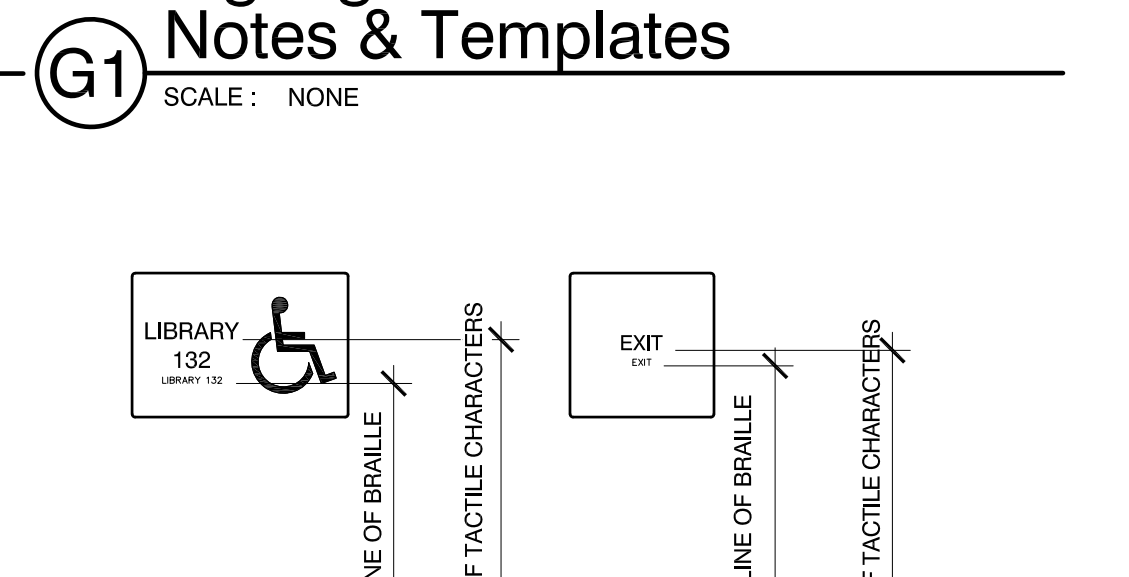
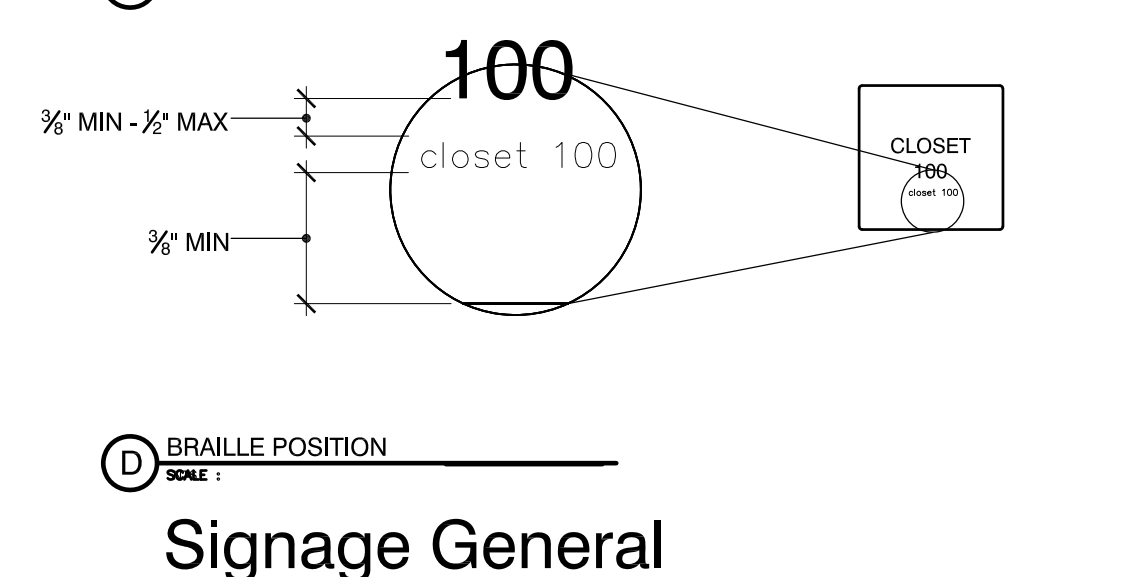
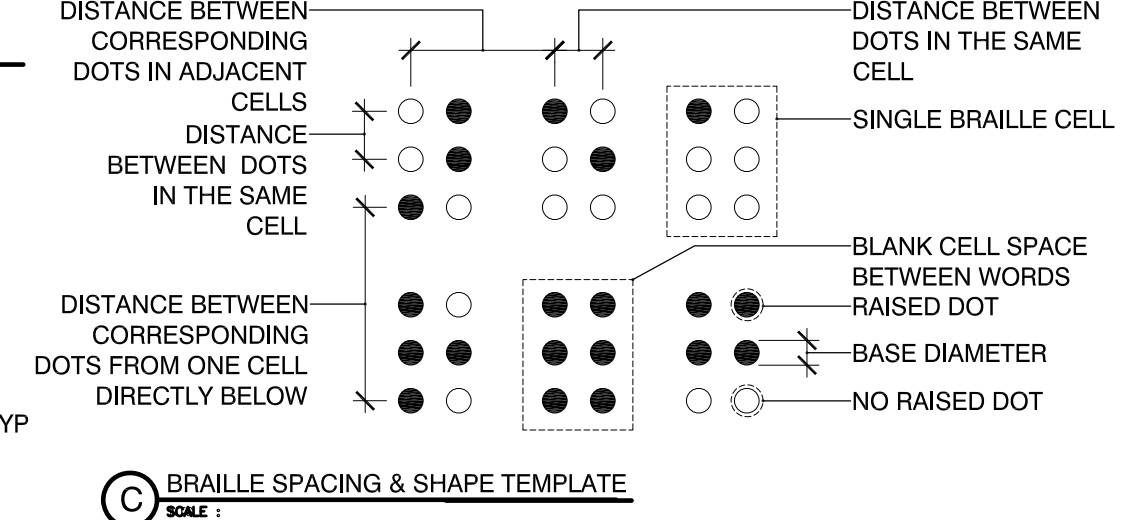
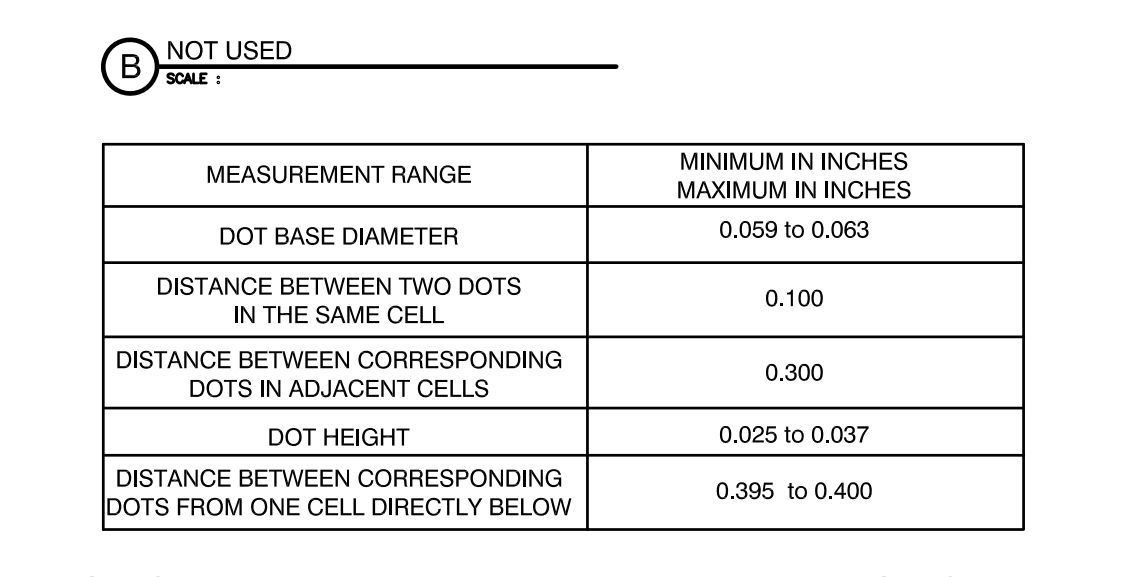
C. VISUAL CHARACTERS PER CBC 11B-703.5

- SHALL COMPLY WITH CBC 11B-703.2 & 11B-703.3
- FINISH & CONTRAST:** CHARACTERS AND THEIR BACKGROUND SHALL HAVE A NON-GLARE FINISH. CHARACTERS SHALL CONTRAST WITH THEIR BACKGROUND WITH EITHER LIGHT CHARACTERS ON A DARK BACKGROUND OR DARK CHARACTERS ON A LIGHT BACKGROUND.
- STROKE THICKNESS:** STROKE THICKNESS OF THE UPPERCASE LETTER 'I' SHALL BE 10% MINIMUM AND 20% MAXIMUM OF THE HEIGHT OF THE CHARACTER.

SIGNAGE GENERAL NOTES

SIGN BACKGROUND (FIELD) COLOR SC1: FILL IN COLOR
SIGN TEXT/SYMBOL COLOR SC2: FILL IN COLOR

MEASUREMENT RANGE	MINIMUM IN INCHES	MAXIMUM IN INCHES
DOT BASE DIAMETER	0.059 to 0.063	
DISTANCE BETWEEN TWO DOTS		0.100
DISTANCE BETWEEN CORRESPONDING DOTS IN ADJACENT CELLS		0.300
DOT HEIGHT	0.025 to 0.037	
DISTANCE BETWEEN CORRESPONDING DOTS FROM ONE CELL DIRECTLY BELOW		0.395 to 0.400



KBZ
KRUGER BENSEN ZIEMER ARCHITECTS, INC.
 159 FELDFORD ST., SUITE 100A VENTURA, CA 93001
 TELEPHONE (805) 650-1033
TODD A. JESPERSEN, AIA
 PRINCIPAL ARCHITECT
JONATHAN D. LEE
 ARCHITECTURAL ASSISTANT

All ideas, design arrangements and plans indicated or represented by this drawing are owned by and are the property of Kruger-Bensen-Ziemer, AIA, architect, and were created, refined and developed for use on, and in connection with, the specified project. None of such ideas, designs, arrangements or plans shall be used for or disclosed to any person, firm or corporation for any purpose whatsoever without the written permission of Kruger-Bensen-Ziemer.

ARCHITECTS: STAMP & SIGNATURE
 ENGINEERS: STAMP & SIGNATURE

REVISION	DESCRIPTION	DATE	BY
REVISIONS.01		9/11/19	TJ

DRAWN: PP/JL
 CHECKED: TJ
 DATE: 6/5/2019
 JOB NO.: 18028

SHEET: DETAILS
 TITLE: DETAILS
 SHEET: A-800