



**LABOR RELATIONS &
HR BUSINESS
PARTNERS
TENANT
IMPROVEMENT**

**1800 SOLAR DRIVE
OXNARD, CA 93030**

skt - Monday 4am -

16'-0" Deck Height

13'-0" Deck

3 5/8" walls

1 ISSUE FOR PLAN CHECK 05-01-2014

Date Issue Nr. Description Date

IA INTERIOR ARCHITECTS

LOS ANGELES

515 S. FIGUEROA ST., SUITE 2050
LOS ANGELES, CALIFORNIA 90071
TEL 213-623-2164 FAX 213-623-2139

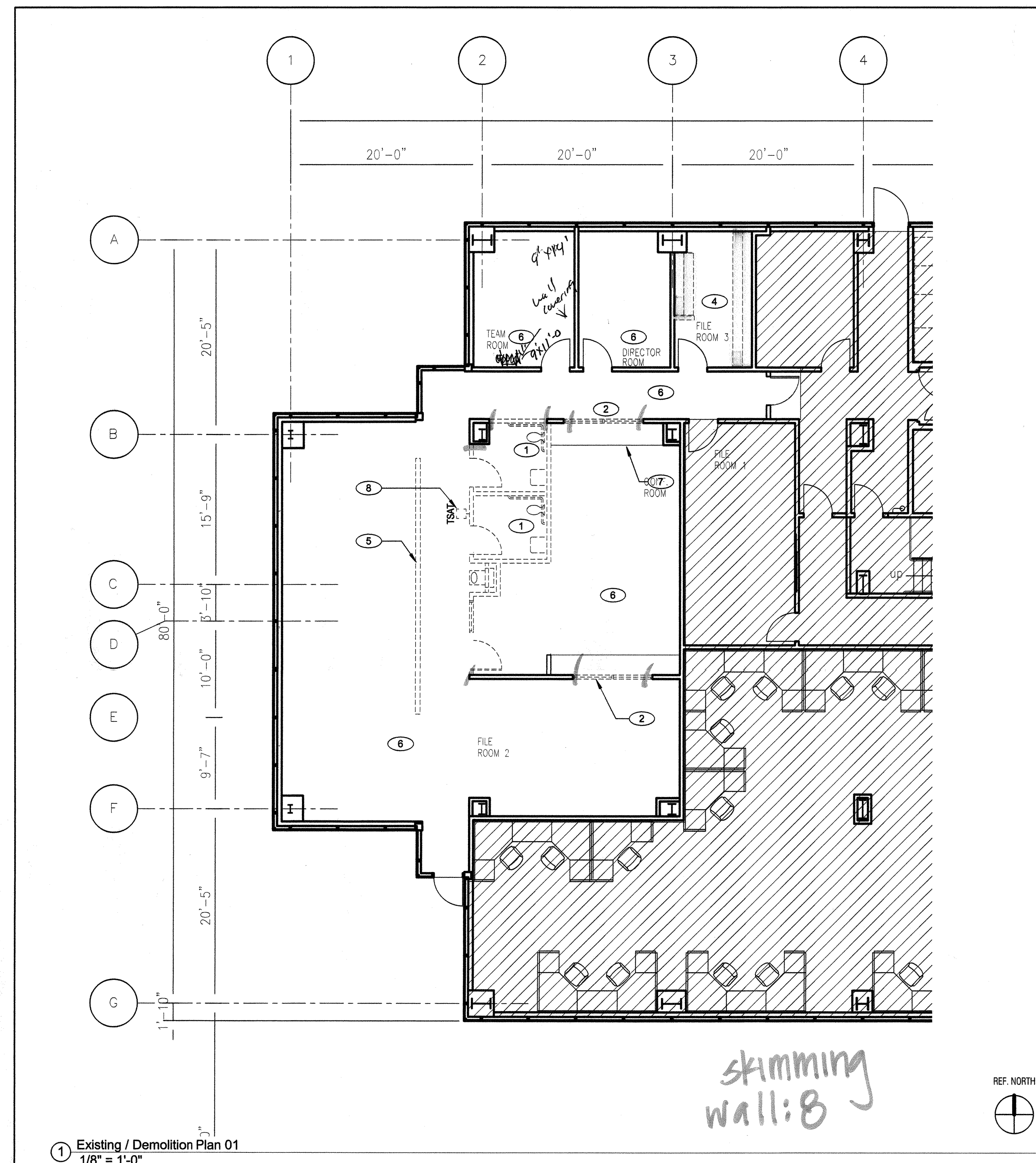
© 2014 INTERIOR ARCHITECTS, INC., A CALIFORNIA CORPORATION. ALL DRAWINGS AND WRITTEN MATERIAL HEREIN CONSTITUTE THE ORIGINAL AND UNPUBLISHED WORK OF THE ARCHITECT. AND THE SAME MAY NOT BE DUPLICATED, USED, OR DISCLOSED WITHOUT THE WRITTEN CONSENT OF THE ARCHITECT.

Drawn: AK Check: FL Owner Approval:

Job No: 014620.00 Scale: 1/8" = 1'-0"

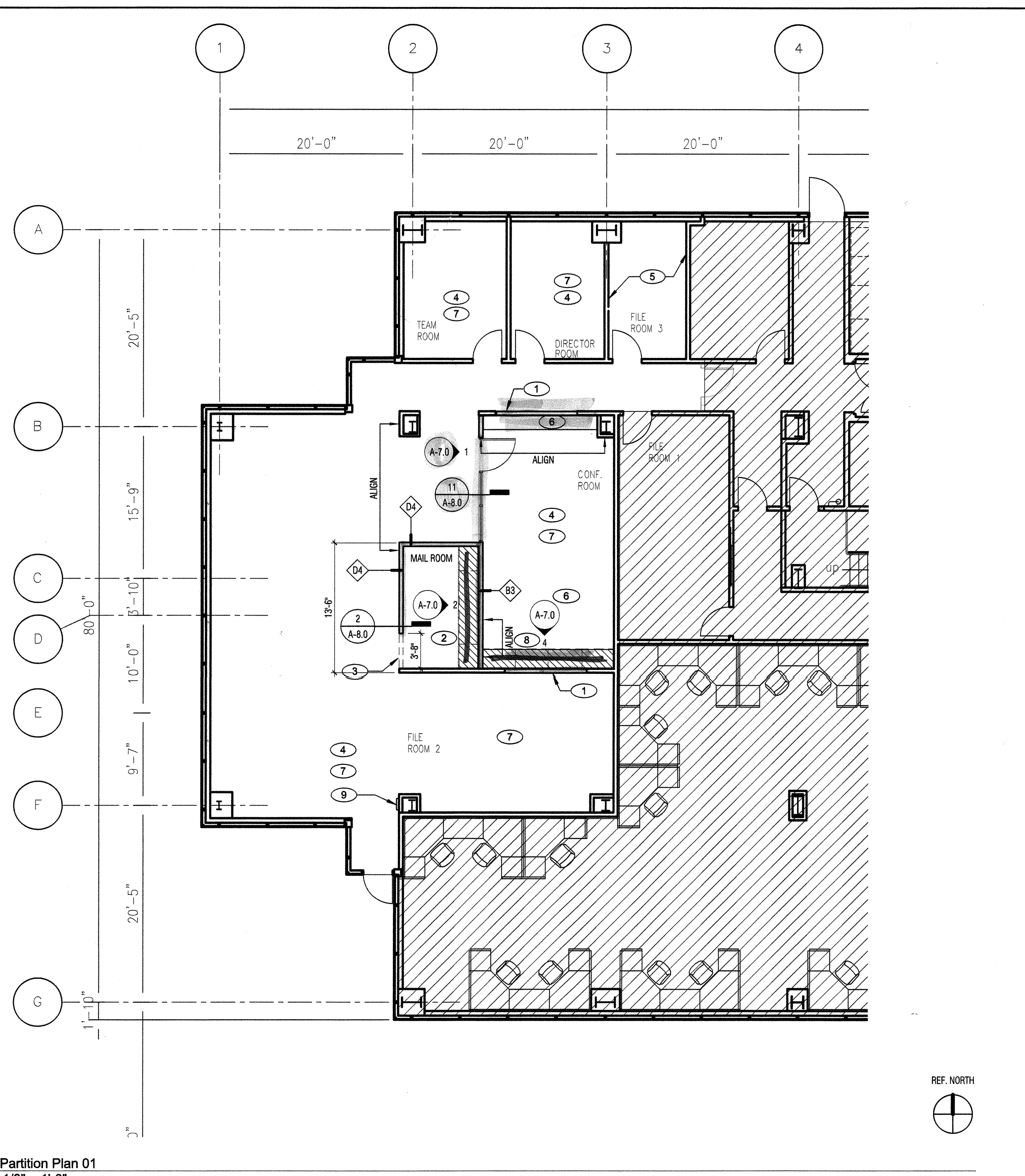
**EXISTING/DEMOLITION
PLAN & PARTITION
PLAN**

Sheet: **A-1.0**



REF. NORTH

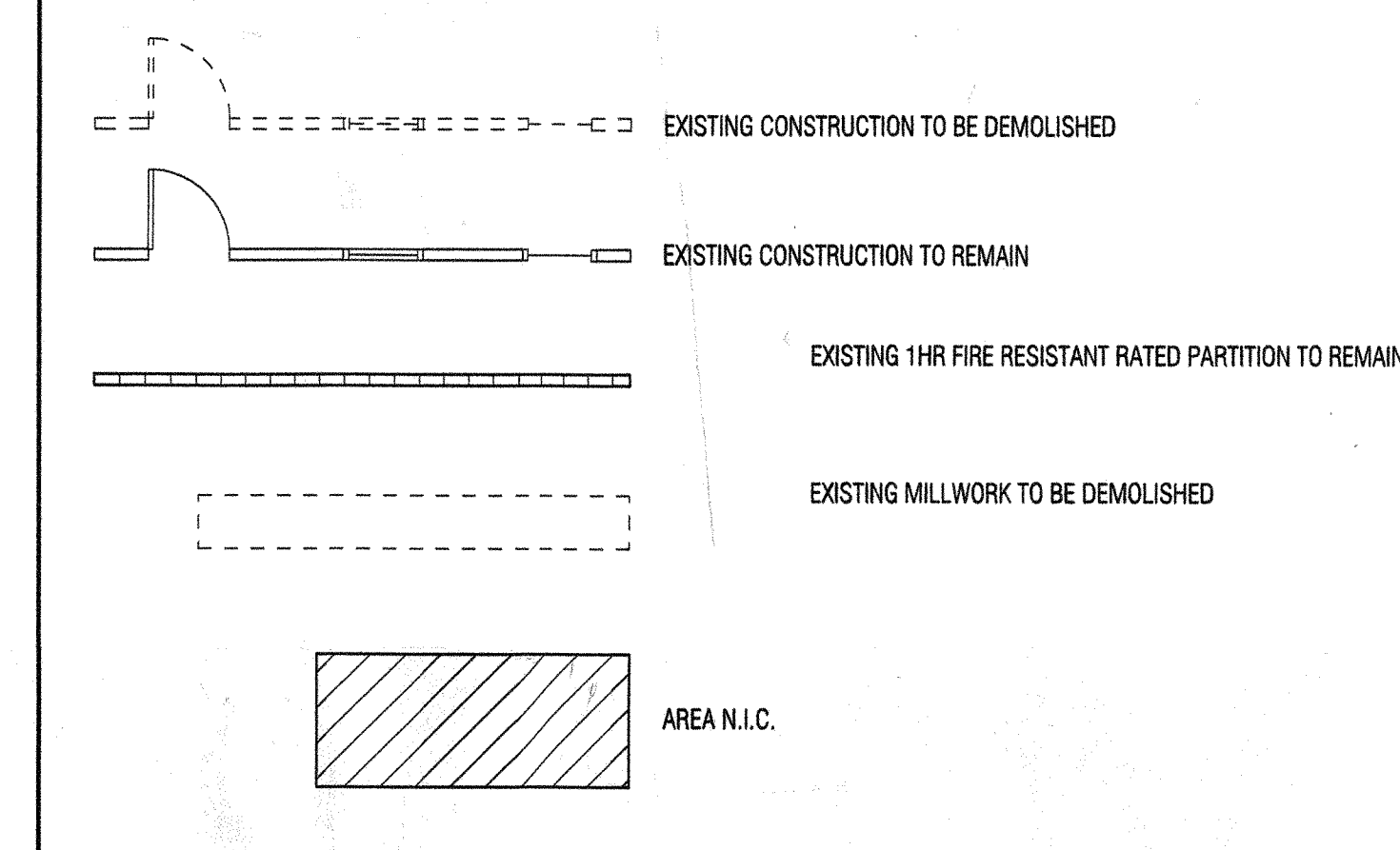
1 Existing / Demolition Plan 01
1/8" = 1'-0"



REF. NORTH

2 Partition Plan 01
1/8" = 1'-0"

EXISTING / DEMOLITION LEGEND



DEMOLITION NOTES

1. **ADDITIONAL NOTES**
SEE AN-SHEET SERIES FOR ADDITIONAL NOTES AND ABBREVIATIONS.

2. **EXISTING WORK**
ALL EXISTING WORK IS TO REMAIN UNLESS OTHERWISE NOTED.

CEILING:
EXISTING CEILING IS TO REMAIN / TO BE DEMOLISHED THROUGHOUT WORK AREA U.O.N. EXISTING LIGHT FIXTURES ARE TO REMAIN / BE REMOVED & SAVED FOR RELOCATION U.O.N. SEE REFLECTED CEILING PLAN FOR ADDITIONAL DEMO.

POWER & COMMUNICATIONS:
EXISTING POWER & COMMUNICATIONS OUTLETS ARE TO REMAIN / TO BE DEMOLISHED THROUGHOUT WORK AREA U.O.N. SEE POWER & SIGNAL PLAN FOR ADDITIONAL DEMO.

FINISHES:
EXISTING FLOOR FINISHES AND WALL BASE ARE TO BE DEMOLISHED THROUGHOUT WORK AREA U.O.N. EXISTING WALL FINISHES ARE TO REMAIN / TO BE DEMOLISHED THROUGHOUT WORK AREA U.O.N. PATCH AND PREP FLOORS AND WALLS AS REQUIRED AT DEMOLISHED LOCATIONS TO RECEIVE NEW FINISHES.

3. **GYPSUM BOARD SUBSTRATE**
WHERE EXISTING CERAMIC TILE, FABRIC OR VINYL WALL COVERING IS SCHEDULED TO BE REMOVED, AND THE GYPSUM BOARD PAPER IS DAMAGED IN THE PROCESS, REMOVE EXISTING LAYER OF GYPSUM BOARD TO EXPOSE EXISTING METAL STUD FRAMING. PROVIDE NEW GYPSUM BOARD TO MATCH EXISTING, AND AT RATED ASSEMBLIES, PROTECT AND MAINTAIN EXISTING UL COMPONENTS AS REQUIRED TO RETAIN UL RATING.

ANNOTATIONS AND DEFINITIONS

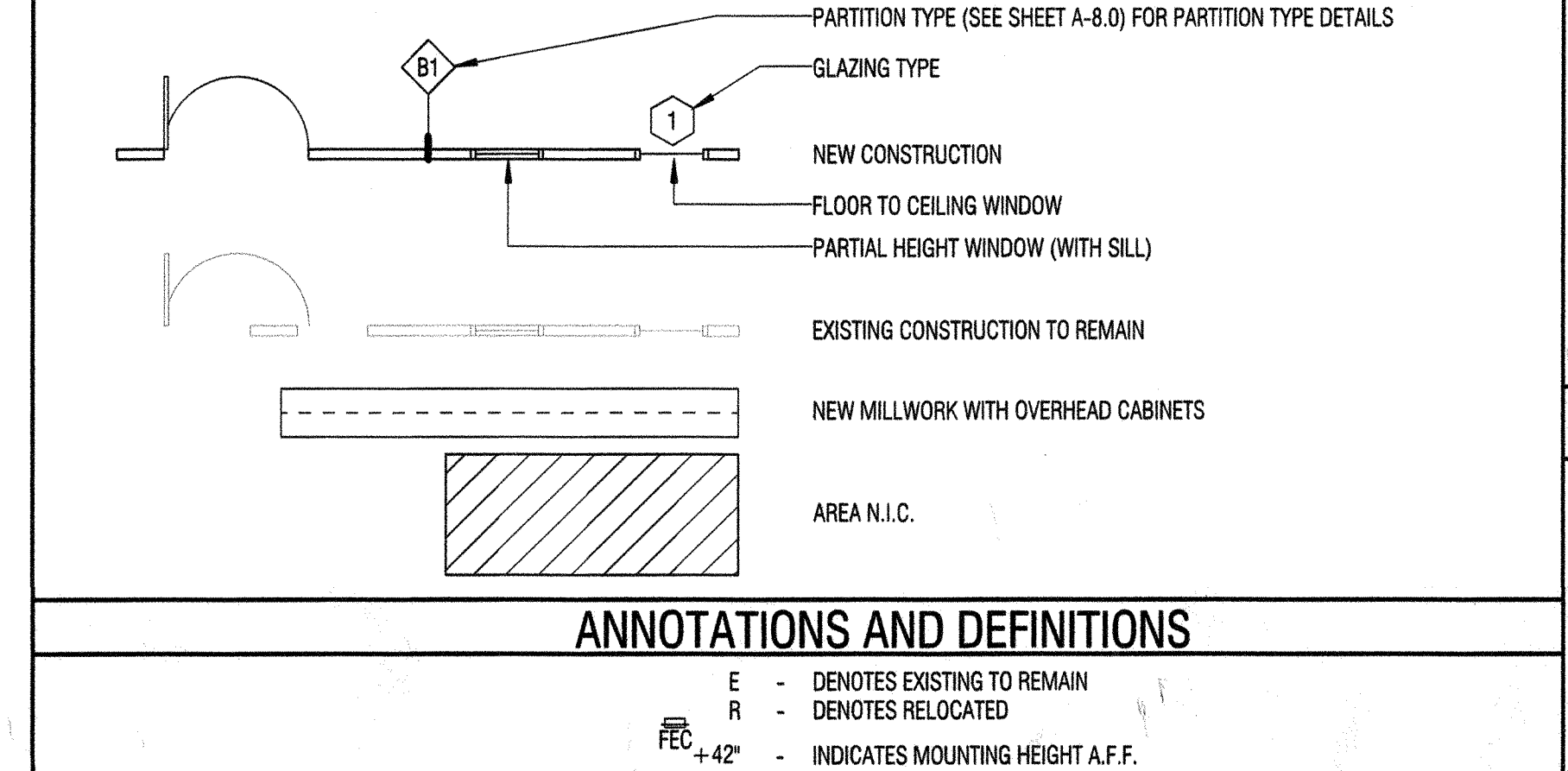
D - DENOTES DEMOLITION
E - DENOTES EXISTING TO REMAIN

EXISTING / DEMOLITION PLAN KEY NOTES

(KEY NOTES AS INDICATED WITH OVAL SYMBOL ON PLAN)

NO. 1 REMOVE FLOOR FINISHES AND CEILINGS AT DEMO RESTROOMS, PREP FLOORS FOR NEW FINISHES. CAP-OFF PLUMBING.
2 REMOVE EXISTING WINDOW.
4 REMOVE EXISTING MILLWORK.
5 REMOVE EXISTING LOW PARTITION & ASSOCIATE POWER.
6 REMOVE EXISTING FLOORING & BASE.
7 REMOVE KEYBOARD TRAYS.
8 RELOCATE T-STAT AS REQUIRED.

PARTITION / FINISH PLAN LEGEND



ANNOTATIONS AND DEFINITIONS

E - DENOTES EXISTING TO REMAIN
R - DENOTES RELOCATED
42" - INDICATES MOUNTING HEIGHT A.F.F.

PARTITION / FINISH NOTES

1. SEE A-8 SERIES (DETAIL SHEETS) FOR PARTITION DETAILS.
2. SEE AN-SERIES (ANNOTATION SHEETS) FOR ADDITIONAL NOTES AND ABBREVIATIONS.
3. PARTITIONS DIMENSIONED TO FINISH FACE U.O.N.
4. USE TYPE 'X' GWB ON FIRE RATED PARTITIONS.
5. USE CEMENTITIOUS BACKER BOARD (DUROCK) OR EQUAL AT PARTITIONS SCHEDULED TO RECEIVE CERAMIC TILE (U.O.N.). SEE FINISH PLAN FOR LOCATION OF TILE.
6. WHERE FLURRED PARTITIONS EXCEED MAXIMUM HEIGHT, BRACE TO ADJACENT STRUCTURE. SEE A-8 SERIES SHEETS FOR DETAILS.
7. FIRE SAFE PENETRATIONS AT FIRE RESISTANT RATED PARTITIONS PER APPLICABLE UL ASSEMBLY. SEE A-8 SERIES SHEETS FOR DETAILS.
8. MAINTAIN INTEGRITY OF EXISTING FIRE RESISTANT ASSEMBLIES FOR ALL PENETRATIONS.
9. PROVIDE BLOCKING AS REQUIRED AT LOCATIONS INCLUDING, BUT NOT LIMITED TO: GRAB BARS, SHELVING, OVERHEAD CABINETS, SIGNAGE, TOILET ROOM ACCESSORIES, WALLMOUNT, EQUIPMENT, ETC.
10. REFER TO A-2 SHEET SERIES FOR POWER & SIGNAL DEVICE LOCATIONS.
11. PROVIDE LEVEL 5 FINISH AT ALL PARTITIONS TO RECEIVE WALL COVERING. REFER TO FINISH PLANS FOR LOCATIONS AND ADDITIONAL INFORMATION.

PARTITION / FINISH PLAN KEY NOTES

No. 1 (KEY NOTES AS INDICATED WITH OVAL SYMBOL ON PLAN)
2 FILL IN EXISTING WALL OPENING AT DEMOLISHED WINDOW W/MATCHING STUD & GYP. BD.
3 NEW 3/4" H. x 24" W. P-LAM CABINET COUNTERTOP WITH P-LAM DOORS AND OPEN SHELVES. SEE ELEVATION.
4 44" DRYWALL FULL HEIGHT CASED OPENING, NO GYP. BD. HEADER.
5 NEW CARPET TILE & BASE.
6 REPLACE WITH NEW P-LAM COUNTERTOP.
7 NEW PAINT THROUGHOUT, TYP.
8 ALIGN NEW WALL WITH EXISTING.
9 EXIST. FIRE EXTINGUISHER CABINET.

PARTITION SCHEDULE

FIRE TYPE	RATING	UL #	DESCRIPTION	SSMA #	STUD SPACING	MAX DEFLECTION	MAX HT	STC	THICKNESS	DETAIL REFERENCE
B3	NR	NR	CONFERENCE ROOM - 1 3/4" X 4 1/2" MULLIONS W/ 1/4" CENTER GLAZING	362S125-33	16"	L/240	16' - 0"	40	4 7/8"	12 / A-8.0 1 / A-8.0
D4	NR	NR	FULL HEIGHT (SLAB TO SLAB), NON RATED, w/ 3 5/8" METAL STUDS @ 16" O.C., ONE LAYER 5/8" GYP BD EACH SIDE	362S125-33	24"	L/240	14' - 0"	40	4 7/8"	2 / A-8.0



**LABOR RELATIONS &
HR BUSINESS
PARTNERS
TENANT
IMPROVEMENT**

**1800 SOLAR DRIVE
OXNARD, CA 93030**

4qm start

1 ISSUE FOR PLAN CHECK 05-01-2014

Delta	Issue Nr.	Description	Date



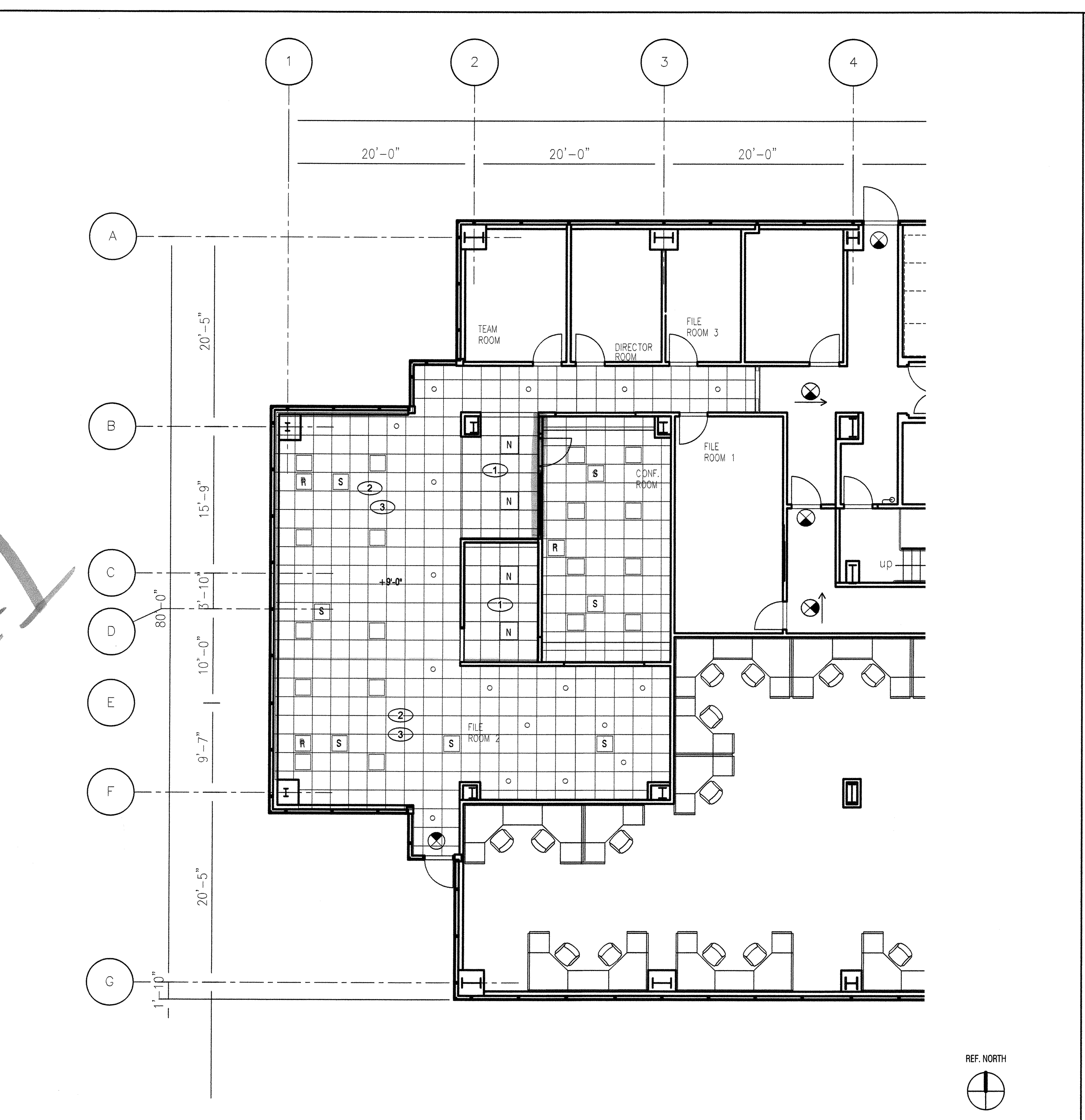
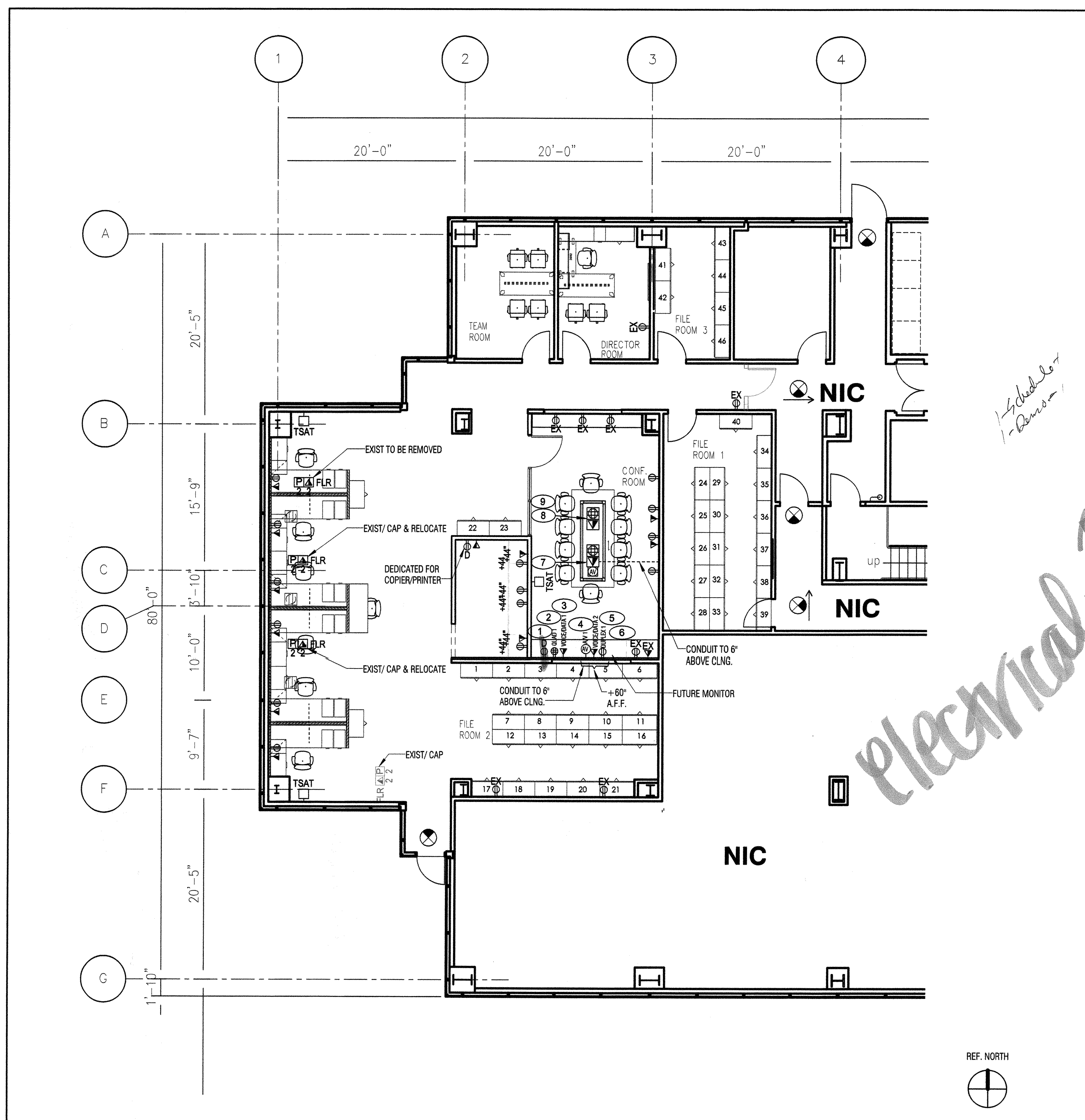
515 S. FIGUEROA ST., SUITE 2050
LOS ANGELES, CALIFORNIA 90071
TEL 213-623-2164 FAX 213-623-2139

© 2014 INTERIOR ARCHITECTS, INC., A CALIFORNIA CORPORATION. ALL DRAWINGS AND WRITTEN MATERIAL HEREBY CONSTITUTE THE ORIGINAL AND UNPUBLISHED WORK OF THE ARCHITECT, AND THE SAME MAY NOT BE DUPLICATED, USED, OR DISCLOSED WITHOUT THE WRITTEN CONSENT OF THE ARCHITECT.

Drawn: AK Check: FL Owner Approval: _____
Job No: 014620.00 Scale: 1/8" = 1'-0"

**POWER AND SIGNAL
PLAN & REFLECTED
CEILING PLAN**

Sheet: **A-2.0**



② Power and Signal Plan 01
1/8" = 1'-0"

① Reflected Ceiling Plan 01
1/8" = 1'-0"

POWER AND SIGNAL PLAN LEGEND	
⊕	WALL MOUNTED DUPLEX OUTLET
⊕	WALL MOUNTED DEDICATED OUTLET
⊕	WALL MOUNTED QUAD OUTLET
⊕	WALL MOUNTED JUNCTION BOX
⊕	FLUSH FLOOR MOUNTED DUPLEX OUTLET
⊕	FLUSH FLOOR MOUNTED WIRED JUNCTION BOX
⊕	FLOOR MOUNTED QUAD OUTLET
⊕	FURNITURE MOUNTED DUPLEX OUTLET
⊕	FLOOR MOUNTED - POWER
⊕	AV FLOOR MOUNTED JUNCTION BOX
⊕	EQUIPMENT DESIGNATION
⊕	FLUSH FLOOR MOUNTED TELEPHONE/DATA OUTLET
⊕	FLUSH FLOOR MOUNTED TELEPHONE OUTLET
⊕	FLUSH FLOOR MOUNTED DATA OUTLET
⊕	WALL MOUNTED TELEPHONE OUTLET
⊕	WALL MOUNTED DATA OUTLET
⊕	WALL MOUNTED TELEPHONE/DATA OUTLET
⊕	FURNITURE MOUNTED TELEPHONE/DATA OUTLET
⊕	WALL MOUNTED CARD READER
⊕	WALL MOUNTED PUSH BUTTON
⊕	WALL MOUNTED THERMOSTAT
⊕	WALL WHIP - POWER / DATA
⊕	FLOOR WHIP - POWER / DATA
⊕	AREA N.I.C.

POWER AND SIGNAL NOTES	
1.	SEE AN-SHEET SERIES FOR ADDITIONAL NOTES AND ABBREVIATIONS.
2.	SEE SHEET AN-4.0, DETAILS 10 & 15 FOR TYPICAL MOUNTING HEIGHTS AND ALIGNMENTS.
3.	SEE ENGINEERING DRAWINGS FOR ADDITIONAL INFORMATION.
4.	G.C. TO COORDINATE ALL FINAL FLOOR SCORE LOCATIONS WITH FURNITURE VENDOR, OWNER AND ARCHITECT PRIOR TO START OF WORK.
5.	G.C. TO MAINTAIN EXISTING UL FIRE RATED ASSEMBLY FOR ALL PENETRATIONS.
6.	ALL NEW COVER PLATES, STROBES, SWITCHES, AND PLUGS, ETC. TO BE WHITE AT PAINTED AND FABRIC WALL AREAS U.O.N. ALL COVER PLATES AT WOOD VENEER WALLS TO BE DARK BROWN U.O.N. REPLACE EXISTING COVER PLATES, PLUGS, SWITCHES, ETC. WITH NEW. SUBMIT COLOR SELECTION TO ARCHITECT PRIOR TO START OF WORK.
7.	WHERE DEVICES ARE SHOWN BACK TO BACK, OFFSET AS REQUIRED TO COMPENSATE FOR BOX AND STUD DIMENSIONS. USE CENTER POINT BETWEEN DEVICE LOCATIONS AS REFERENCE POINT FOR LOCATION DIMENSION U.O.N.
8.	COORDINATE DEVICE LOCATIONS PRIOR TO START OF WORK INCLUDING, BUT NOT LIMITED TO THE FOLLOWING CONDITIONS: SYSTEM FURNITURE LAYOUT, FREE STANDING AND BUILT-IN FURNITURE, MILLWORK, STRUCTURAL COLUMN LINES AT POKE-THROUGH LOCATIONS & FACE OF FINISH AT PARTITIONS AND FLOOR. WHERE APPLICABLE CONDUCT PRE-INSTALLATION CONFERENCE.
9.	WHERE WHIPS ARE SCHEDULED FOR SYSTEM FURNITURE, PROVIDE COMPLETE CODE COMPLIANT INSTALLATION INCLUDING, BUT NOT LIMITED TO: WHIP MUST BE VISIBLE AND READILY ACCESSIBLE. SYSTEM FURNITURE WHIP INSTALLATION, HOOK UP AND ACTIVATION SHALL COMPLY WITH LOCAL LABOR LAWS AND JURISDICTION REQUIREMENTS INCLUDING UL, LOCATE WHIP OUTSIDE CLEAR ZONES REQUIRED FOR CIRCULATION, ADA ACCESSIBLE ROUTES AND EXIT PATH.
ANNOTATIONS AND DEFINITIONS	
D	DENOTES DEMOLITION
E	DENOTES EXISTING TO REMAIN
R	DENOTES RELOCATED
⊕+80	INDICATES MOUNTING HEIGHT A.F.F.
⊕PS	INDICATES USE FOR PROJECTION SCREEN
⊕3	INDICATES THREE WAY SWITCH

REFLECTED CEILING PLAN LEGEND	
⊕	NEW 2x2 SUSPENDED CEILING GRID & ACOUSTIC TILES TO MATCH & ALIGN W/ EXISTING
⊕	EXISTING 2x2 SUSPENDED CEILING GRID & ACOUSTIC TILES TO REMAIN. REPLACE DAMAGED GRID AND TILES IN REMODEL AREA W/ NEW TO MATCH EXISTING, U.O.N.
⊕	NEW 2x2 LIGHT FIXTURE TO MATCH EXISTING
⊕	EXISTING 2x2 LIGHT FIXTURE TO REMAIN
⊕	EXISTING DOWNLIGHT FIXTURE TO REMAIN
⊕	EXISTING AIR SUPPLY TO REMAIN
⊕	EXISTING AIR RETURN TO REMAIN
+9'-6"	DENOTES CEILING HEIGHT
⊕	WALL MOUNTED SINGLE LIGHT SWITCH
⊕	WALL MOUNTED DIMMER LIGHT SWITCH
⊕	NEW WALL MOUNTED EXT. SIGN, SHADE INDICATES ILLUMINATED FACE, ARROW INDICATES DIRECTION
⊕	NEW CEILING MOUNTED EXT. SIGN, SHADE INDICATES ILLUMINATED FACE, ARROW INDICATES DIRECTION

CEILING NOTES	
1.	SEE SHEET A-8.1 FOR CEILING DETAILS.
2.	SEE AN-SHEET SERIES FOR ADDITIONAL NOTES AND ABBREVIATIONS.
3.	PROVIDE ACCESS PANELS WHERE REQUIRED IN GYP. SD. CEILING INCLUDING, BUT NOT LIMITED TO FIRE SMOKE DAMPERS, FIRE LIFE SAFETY J-BOXES, FAN COILS AND VAV BOXES PER MANUFACTURERS WRITTEN RECOMMENDATIONS, CONDUIT BANK PULL BOXES AND CONTROL AND SHUTOFF VALVES.
4.	UNLESS OTHERWISE SHOWN PROVIDE FLUSH DRYWALL TYPE ACCESS PANELS W/ CONCEALED FRAME AT ALL NON RATED LOCATION.
5.	EXISTING CEILING GRID TO REMAIN, PAINT/TOUCH UP GRID AS NEEDED FOR UNIFORM FINISH.
6.	REPLACE ALL CEILING TILES WITH NEW, MATCH EXISTING.
7.	EXISTING 2x2 PARABOLIC FIXTURES TO REMAIN. ADD NEW MATCHING LIGHT FIXTURE WHERE INDICATED.
REFLECTED CEILING PLAN KEY NOTES	
1.	EXPAND GRID CEILING TO MATCH EXISTING IN OPEN OFFICE AREA.
2.	EXISTING TILE REMAIN/REPLACE ALL DAMAGED OR DISCOLORED TILES WITH NEW.
3.	PROVIDE ALTERNATE COST TO REPLACE WITH ALL NEW CEILING TILE.

ANNOTATIONS AND DEFINITIONS	
FURNISH:	SUPPLY AND DELIVER TO PROJECT SITE READY FOR UNLOADING, UNPACKING & INSTALLATION.
INSTALL:	OPERATIONS ON PROJECT SITE INCL. UNLOADING, TEMP. STORING, UNPACKING, INSTALLING, ASSEMBLING, PLACING, ANCHORING, APPLYING, FINISHING, PROTECTING, CLEANING ETC.
PROVIDE:	FURNISH AND INSTALL, COMPLETE READY FOR THE INTENDED USE.
D	DENOTES DEMOLITION
E	DENOTES EXISTING TO REMAIN
R	DENOTES RELOCATED
GFI	DENOTES GROUND FAULT INTERRUPT
⊕+42"	INDICATES MOUNTING HEIGHT A.F.F.

POWER AND SIGNAL PLAN KEY NOTES	
[KEY NOTES AS INDICATED WITH OVAL SYMBOL ON PLAN]	
1.	PROVIDE DEDICATED OUTLET INSIDE LOWER CABINET @24" A.F.F. FOR FUTURE SOUND MASKING AMPLIFIER. PROVIDE 1" CONDUIT TO 6" ABOVE CEILING.
2.	QUAD 1 INSIDE LOWER CABINET @24" A.F.F. (1) CREDENZ & AV, DEMAND LOAD: 1,000-WATTS PER CONFERENCE ROOM. (1) 20-AMP CIRCUIT SHALL BE PROVIDED FOR UP TO (2) CONFERENCE ROOMS. ACCEPTABLE MANUFACTURERS: HUBBELL, LEGRAND. INSTALLATION: WALL MOUNTED POWER SOURCE: UTILITY.
3.	VOICE DATA 1 INSIDE LOWER CABINET @24" A.F.F. 4X4 BACK BOX WITH 1" CONDUIT STUB-UP TO ABOVE THE CEILING. PROVIDE PULL STRING FOR LOW VOLTAGE CABLING INSTALLATION.
4.	AV 1-4X4 BACK BOX WITH 1-1/4" CONDUIT STUB-UP TO ABOVE THE CEILING. PROVIDE PULL STRING FOR AV CABLING INSTALLATION.
5.	VOICE DATA 2, 4X4 BACK BOX WITH 1" CONDUIT STUB-UP TO ABOVE THE CEILING. PROVIDE PULL STRING FOR LOW VOLTAGE CABLING INSTALLATION.
6.	DUPLEX 1, TV SCREEN, DEMAND LOAD: 75-WATTS PER CONFERENCE ROOM. ONE (1) 20-AMP CIRCUIT SHALL BE PROVIDED FOR UP TO (2) CONFERENCE ROOMS. ACCEPTABLE MANUFACTURERS: HUBBELL, LEGRAND. INSTALLATION: WALL MOUNTED POWER SOURCE: UTILITY. PROVIDE 1.5" CONDUIT FROM CONF. TABLE AV PORT TO 6" ABOVE NEAREST WALL FOR CONNECTION TO AV MONITOR.
7.	TABLE INFED 1, INSIDE TABLE LEG. TABLETOP DEVICES & AV CONNECTION. DEMAND LOAD: 200-WATTS PER CONFERENCE ROOM. ONE (1) 20-AMP CIRCUIT SHALL BE PROVIDED FOR UP TO (2) CONFERENCE ROOMS. (CONNECTED TO DUPLEX 2) ACCEPTABLE MANUFACTURERS: HUBBELL, LEGRAND. INSTALLATION: WALL MOUNTED POWER SOURCE: UTILITY.
8.	TABLE INFED 2, TABLETOP DEVICES. DEMAND LOAD: 200-WATTS PER CONFERENCE ROOM. ONE (1) 20-AMP CIRCUIT SHALL BE PROVIDED FOR UP TO (2) CONFERENCE ROOMS. (CONNECTED TO DUPLEX 2) ACCEPTABLE MANUFACTURERS: HUBBELL, LEGRAND. INSTALLATION: WALL MOUNTED POWER SOURCE: UTILITY.
9.	LIGHTING CONTROL TO THE WORKSTATION AREAS SHALL BE CONTROLLED BY TIME CLOCK SYSTEM AND OCCUPANCY SENSORS LOCATED THROUGHOUT THE OPEN AREA. SEE STANDARDS FOR ACCEPTABLE OCCUPANCY SENSORS.



**LABOR RELATIONS &
HR BUSINESS
PARTNERS
TENANT
IMPROVEMENT**

**1800 SOLAR DRIVE
OXNARD, CA 93030**

1 ISSUE FOR PLAN CHECK 05-01-2014

Delta Issue Nr. Description Date

**IA INTERIOR
ARCHITECTS**

LOS ANGELES

515 S. FIGUEROA ST., SUITE 2050
LOS ANGELES, CALIFORNIA 90071
TEL 213-623-2164 FAX 213-623-2139

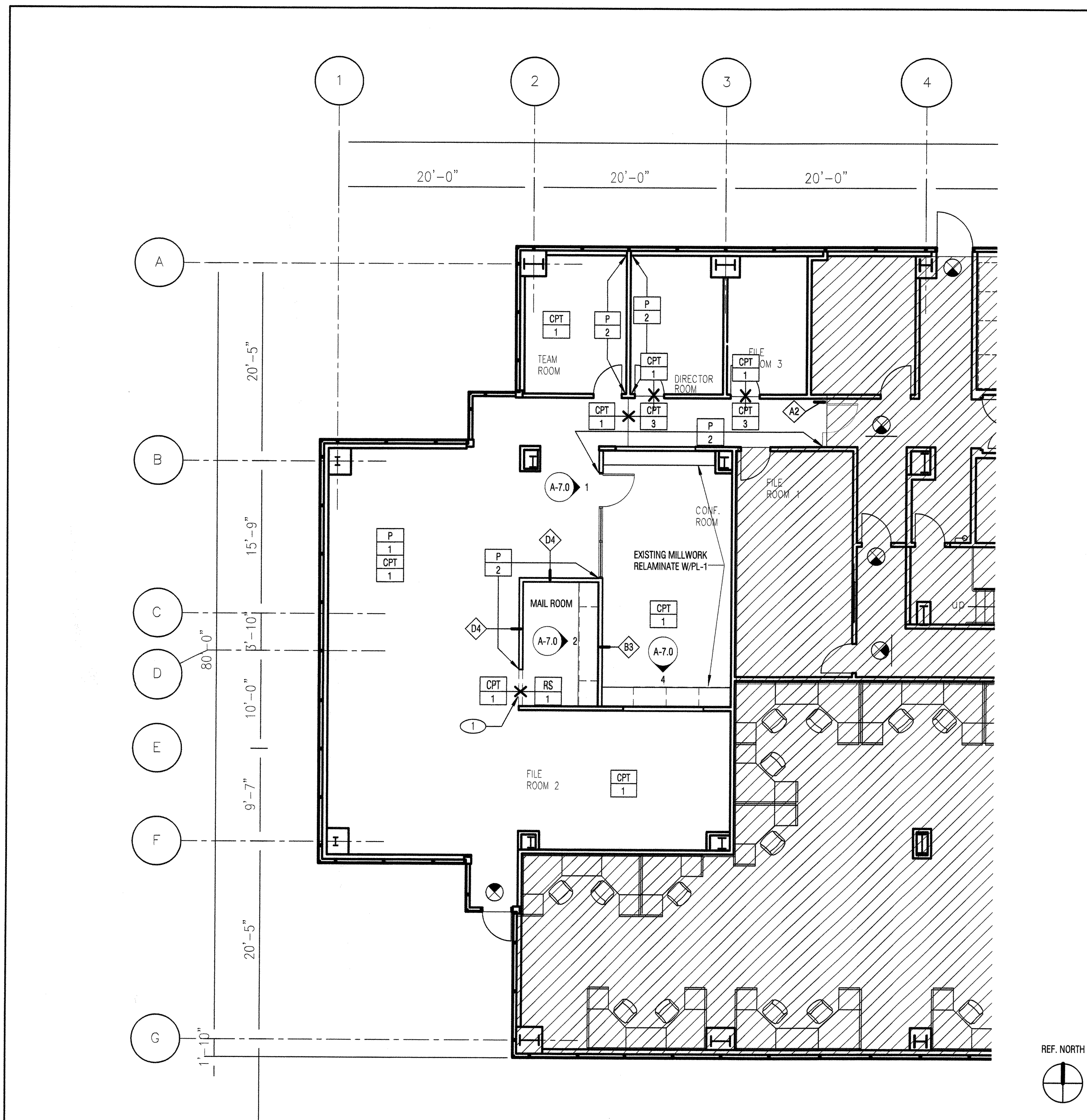
©2014 INTERIOR ARCHITECTS, INC., A CALIFORNIA CORPORATION. ALL DRAWINGS AND WRITTEN MATERIAL HEREIN CONSTITUTE THE ORIGINAL AND UNPUBLISHED WORK OF THE ARCHITECT, AND THE SAME MAY NOT BE DUPLICATED, USED, OR DISCLOSED WITHOUT THE WRITTEN CONSENT OF THE ARCHITECT.

Drawn: AK Check: FL Owner Approval:

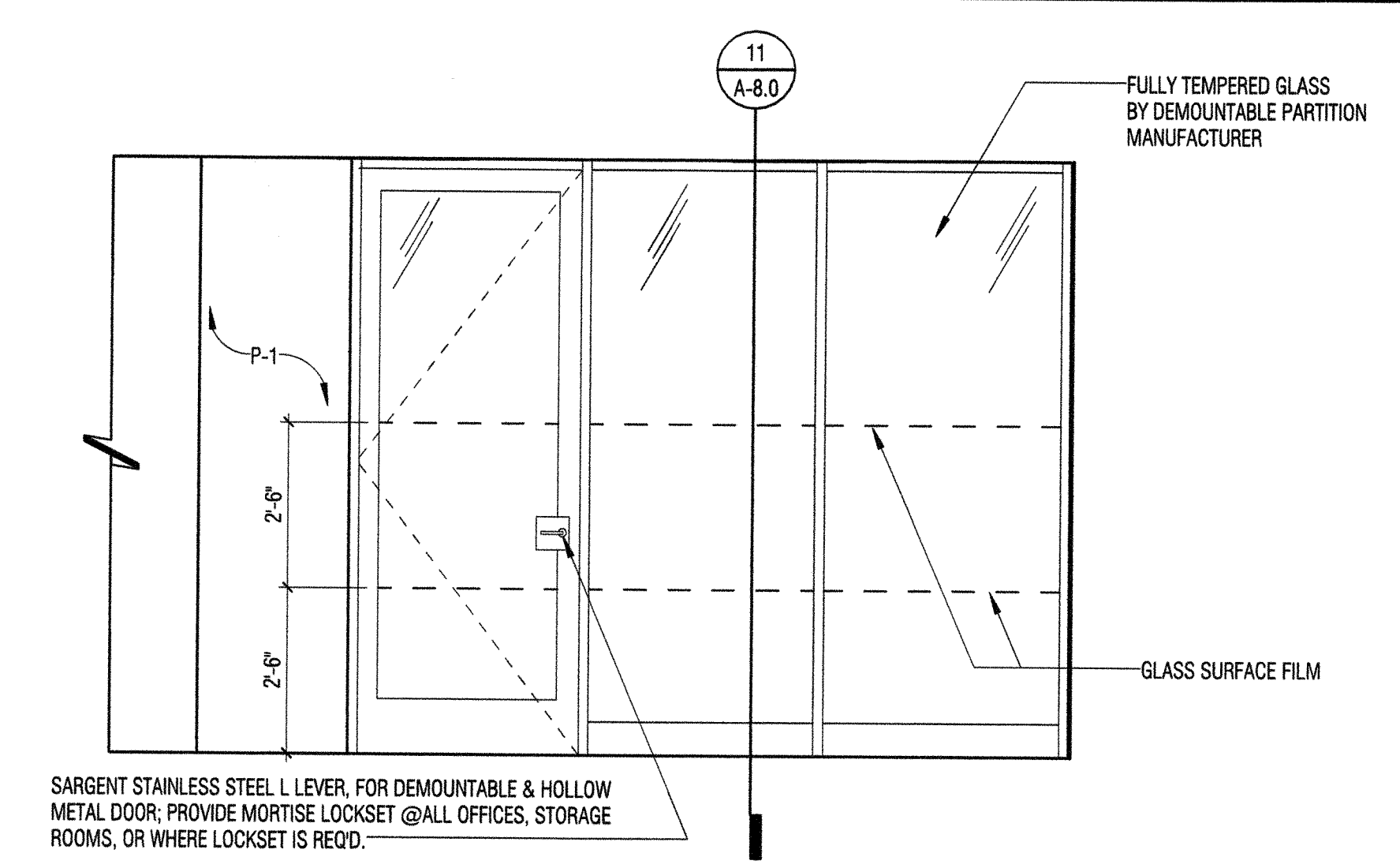
Job No: 014620.00 Scale: As Indicated

**FINISH PLAN /
INTERIOR
ELEVATIONS**

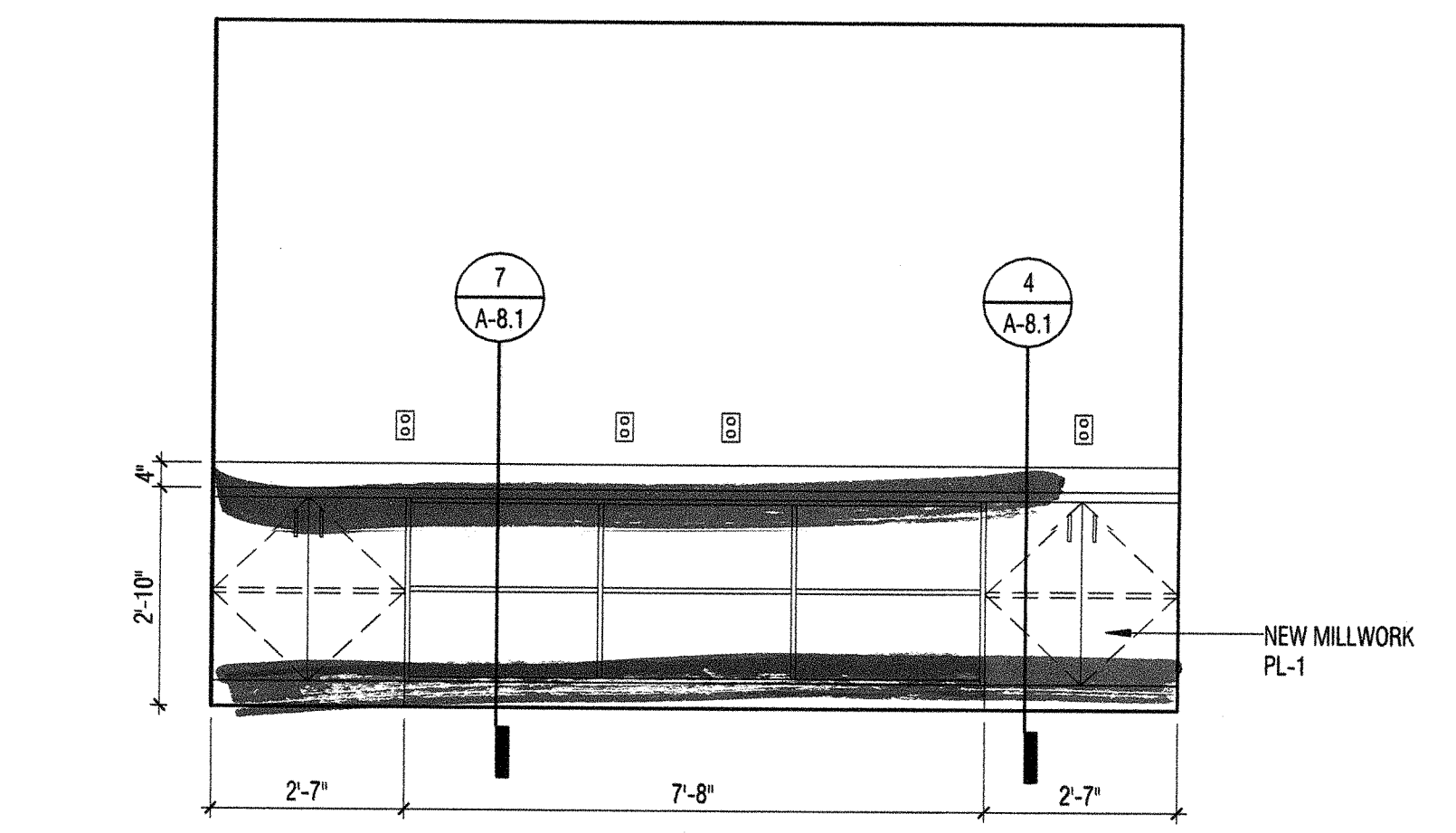
Sheet: **A-7.0**



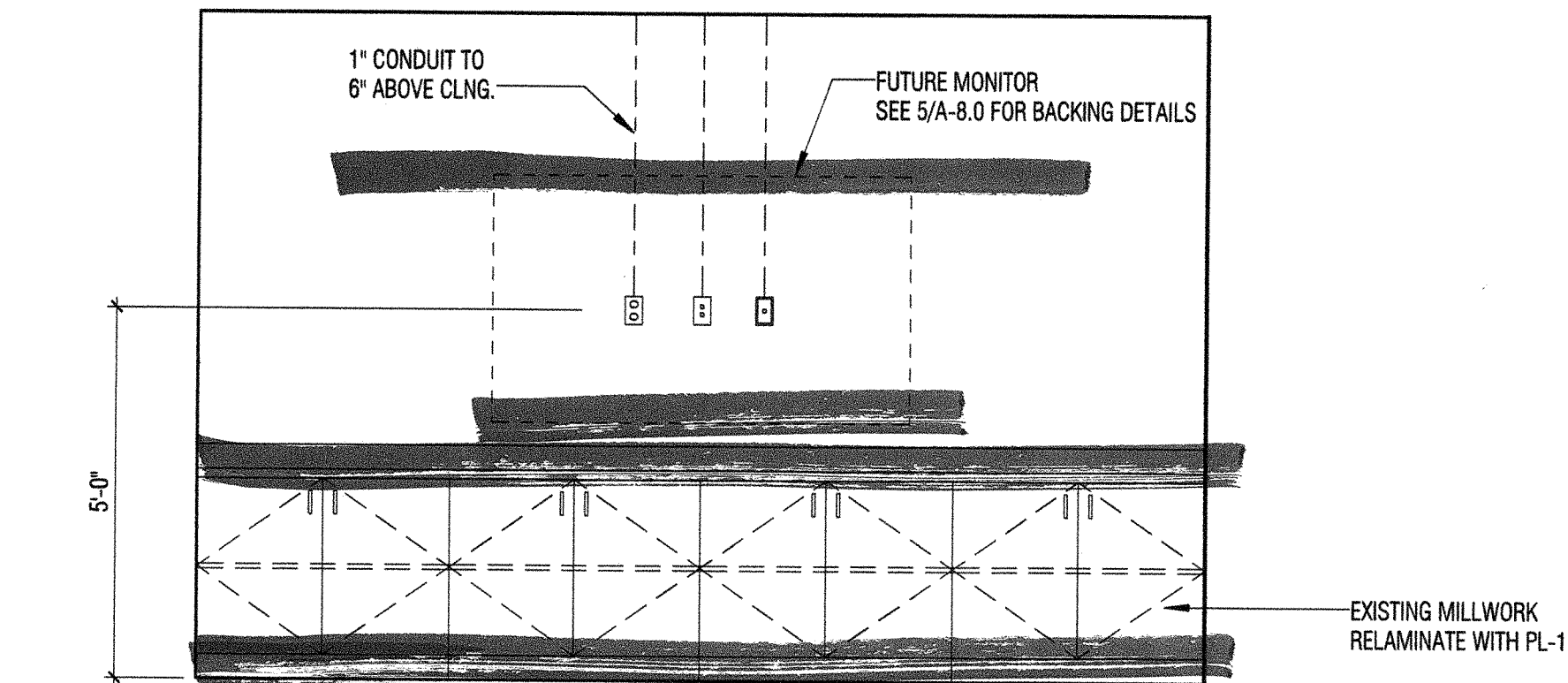
3 Finish Plan 01
1/8" = 1'-0"



1 OFFICE EXTERIOR
3/8" = 1'-0"



2 MAIL ROOM
3/8" = 1'-0"

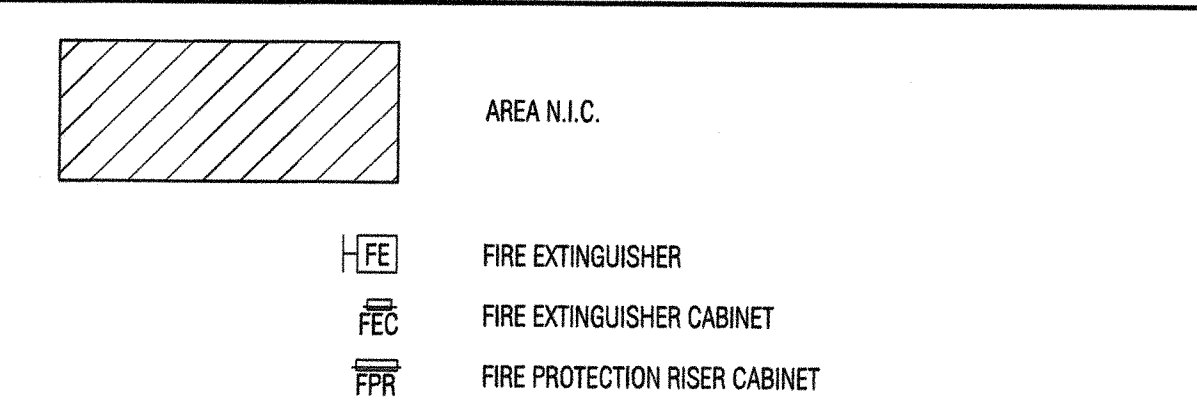


4 CONFERENCE ROOM AV WALL
3/8" = 1'-0"

FINISH SCHEDULE

FINISH TYPE	MARK	MANUFACTURER	STYLE	COLOR	SIZE	INSTALLATION	NOTES	LOCATION
CARPET								
CARPET	CPT-1	SHAW CONTRACT	SCULPT TILE 5T007	CLAY 83761	24"X24"	MONOLITHIC	PRIMARY BACKING: SYNTHETIC. SECONDARY BACKING: POLYOLEFIN OR EQUAL	GENERAL THROUGHOUT
CARPET	CPT-3	SHAW CONTRACT	THE SOCIALITE TILE	AUDRY 59585	24"X24"	MONOLITHIC	PRIMARY BACKING: SYNTHETIC. SECONDARY BACKING: ECOWORX TILE	HALLWAY AS SHOWN
PAINT								
PAINT	P-1	BENJAMIN MOORE	EGGSHELL FINISH 374 OR EQUAL	WHITE DOVE OC-17	N/A	USE W/ECO SPEC WB INTERIOR LATEX	TYPICAL PAINT THROUGHOUT	GENERAL LOCATIONS
PAINT	P-2	SHERWIN WILLIAMS	SEE INSTRUCTIONS	BACKDROP SW 7025			GENERAL LOCATIONS: EGGSHELL - PROMAR 200 INTERIOR LATEX EGGSHELL II FINISH, DOORS & FRAMES: SEMI-GLOSS PROMAR 200 INTERIOR LATEX SEMI-GLOSS FINISH 376	CORE ACCENT
PLASTIC LAMINATE								
PLASTIC LAMINATE	PL-1	WILSONART	SHEER MESH 4776-38	TEXTURED MATTE	N/A			COPY/MAIL
RESILIENT FLOOR FINISHES								
RESILIENT FLOOR FINISHES	RF-1	FORBO	MARMOLEUM REAL LINOLEUM SHEET	BLACK 2939	2.0M			COPY/PRINT, STORAGE/MAIL
TILE FLOOR FINISHES								
TILE FLOOR FINISHES	FT-1	CROSSVILLE CERAMICS	COLOR BLOX TOO	CELERY STALK/A1173	6"X12"	RESTROOM ONLY		
WALL BASE								
WALL BASE	B-1	ROPPE	700 SERIES	WHITE 170	1/8" THICK		STRAIGHT BASE @ CARPET, COVE BASE @ RESILIENT TILE	THROUGHOUT
WALL TILE								
WALL TILE	WT-1	CROSSVILLE CERAMICS	COLOR BLOX TOO	SLINKY/A1103	6"X12"		LOCATED AT RESTROOM	

FINISH PLAN LEGEND



SHEET NOTES

- SEE AN-SHEET SERIES FOR ADDITIONAL NOTES AND ABBREVIATIONS.
- ALL WALLS TO BE PAINTED P-1 IN SPECIFIED FINISH UNLESS NOTED.
- PARTITIONS DIMENSIONED TO FINISH FACE U.O.N.
- USE TYPE "X" GWB ON FIRE RATED PARTITIONS.
- USE CEMENTITIOUS BACKER BOARD (DUROCK) OR EQUAL AT PARTITIONS SCHEDULED TO RECEIVE CERAMIC TILE (U.O.N.). SEE FINISH PLAN FOR LOCATION OF TILE.
- SEE A-8 DETAIL SHEET SERIES FOR TYPICAL PARTITION DETAILS, EXTEND OF FRAMING AND FINISHES.
- WHERE FURRED PARTITIONS EXCEED MAXIMUM HEIGHT, BRACE TO ADJACENT STRUCTURE. SEE A-8 DETAIL SHEET SERIES.
- FIRE SAFE PENETRATIONS AT FIRE RESISTANT RATED PARTITIONS PER APPLICABLE UL ASSEMBLY. SEE A-8 SHEET SERIES FOR DETAILS.
- MAINTAIN INTEGRITY OF EXISTING FIRE RESISTANT RATED ASSEMBLIES FOR ALL PENETRATIONS.
- PROVIDE BLOCKING AS REQUIRED AT LOCATIONS INCLUDING, BUT NOT LIMITED TO: GRAB BARS, SHELVING, OVERHEAD CABINETS, SIGNAGE, TOILET ROOM ACCESSORIES, WALLMOUNT EQUIPMENT, ETC.
- REFER TO A-2 SHEET SERIES FOR POWER & SIGNAL DEVICE LOCATIONS.
- PROVIDE LEVEL 5 FINISH AT ALL PARTITIONS TO RECEIVE WALL COVERING. REFER TO FINISH PLANS FOR LOCATIONS AND ADDITIONAL INFORMATION.

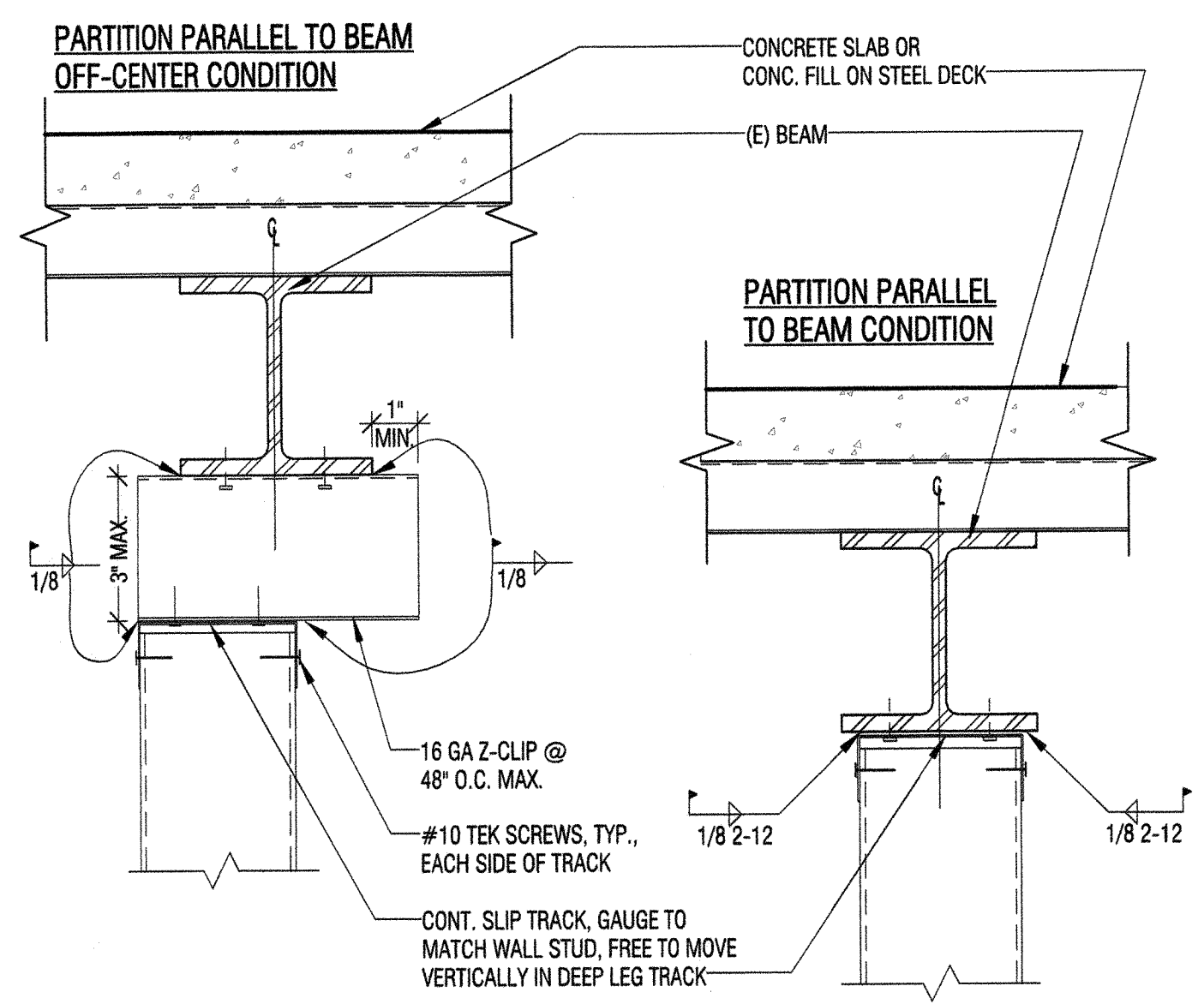
KEY NOTES

- NO. 1 [KEY NOTES AS INDICATED WITH OVAL SYMBOL ON PLAN]
1 SEE 1/A-8.1 FOR TRANSITION DETAIL.

ANNOTATIONS AND DEFINITIONS

- E - DENOTES EXISTING TO REMAIN
R - DENOTES RELOCATED
FEC +42" - INDICATES MOUNTING HEIGHT A.F.F.

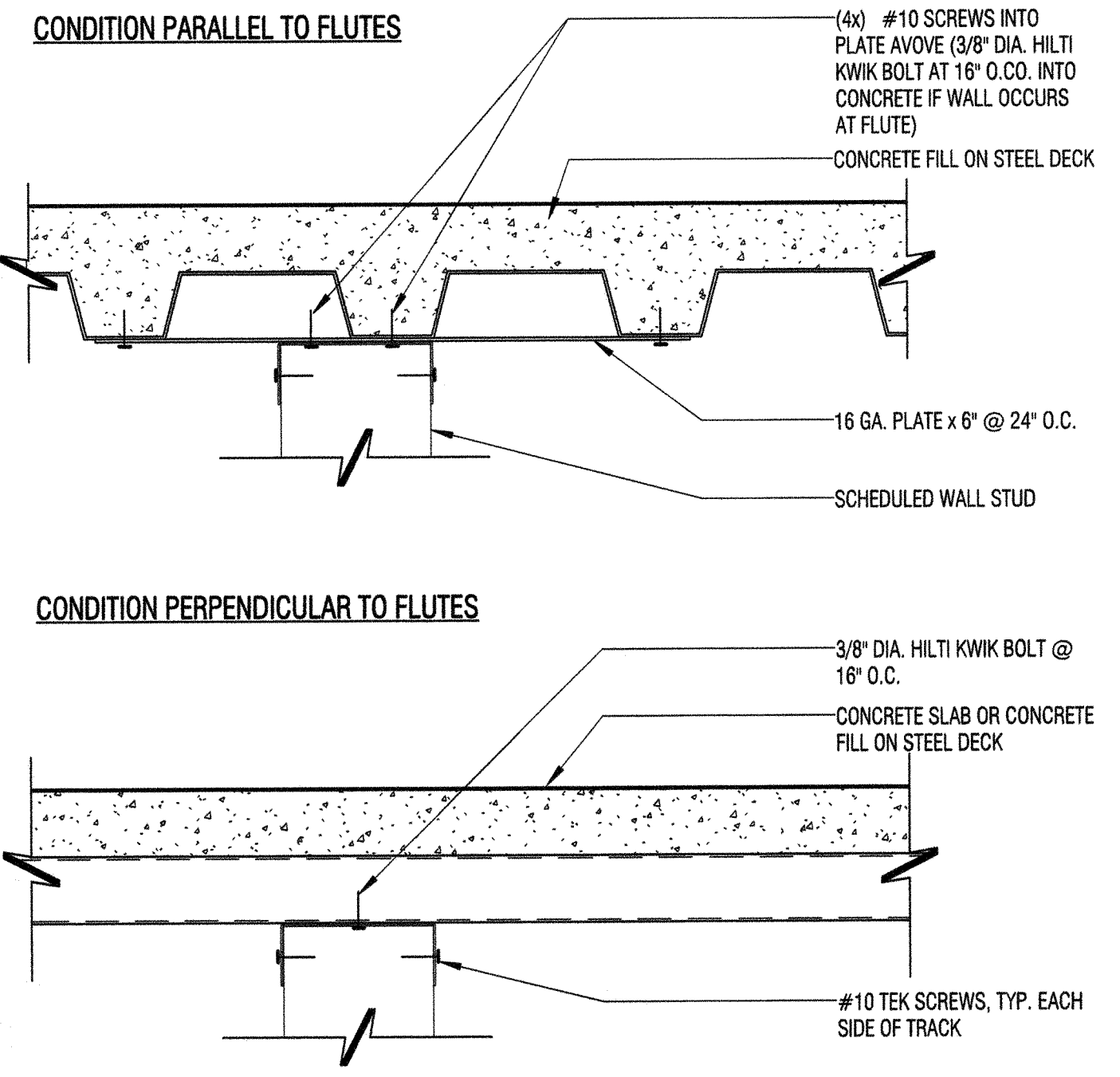
ALTERNATE PRICING KEY NOTES



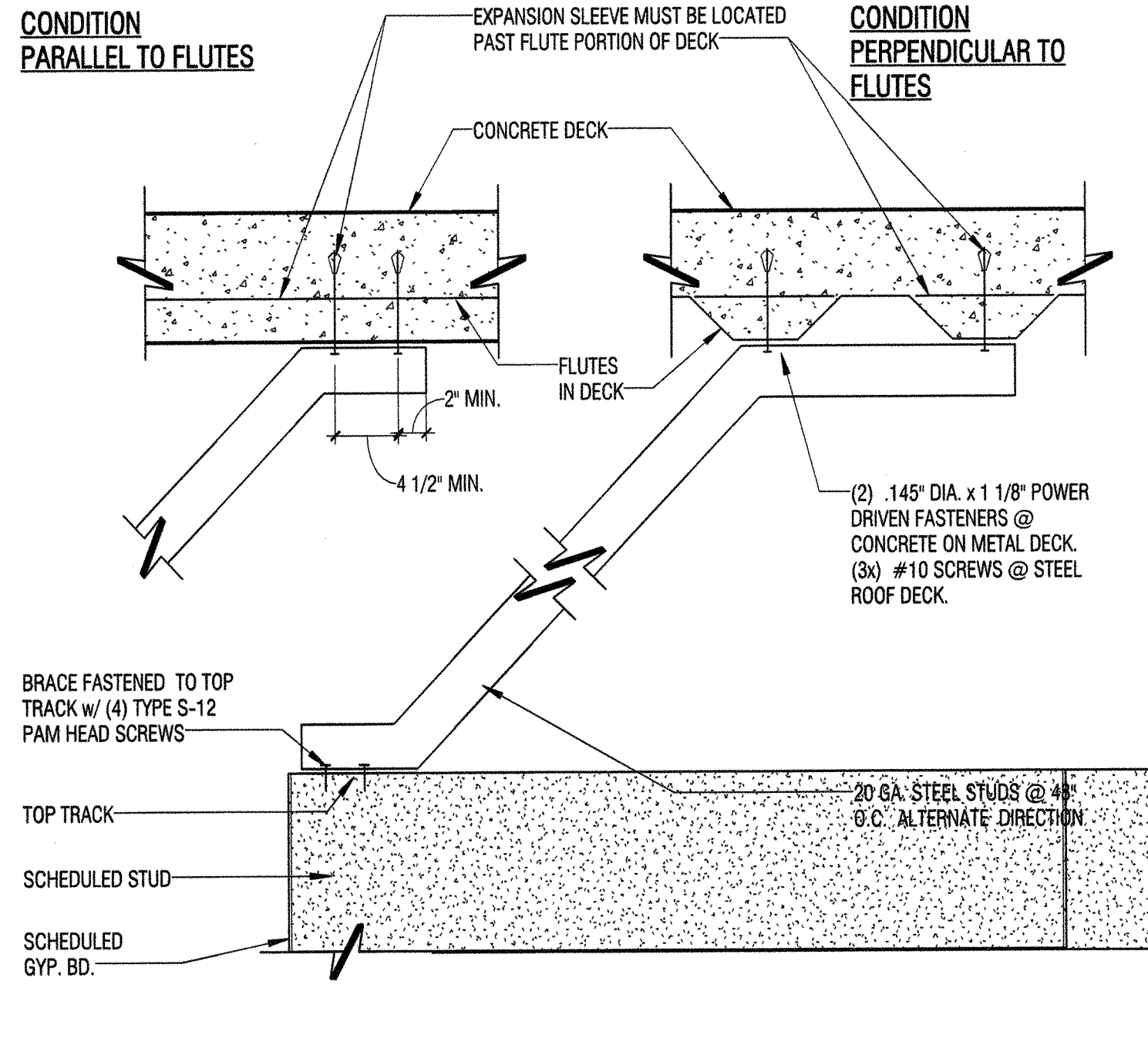
CONTRACTOR'S OPTION: IN LIEU OF WELD USE (2X) 0.145" DIA. POWDER DRIVEN FASTENERS INTO STEEL BEAM AND (2X) #10 TEK SCREWS AT 2'-CLIP (SHOWN DASHED)

CONTRACTOR'S OPTION: IN LIEU OF WELD USE (2X) 0.145" DIA. POWDER DRIVEN FASTENERS INTO STEEL BEAM AT 12" O.C. (SHOWN DASHED)

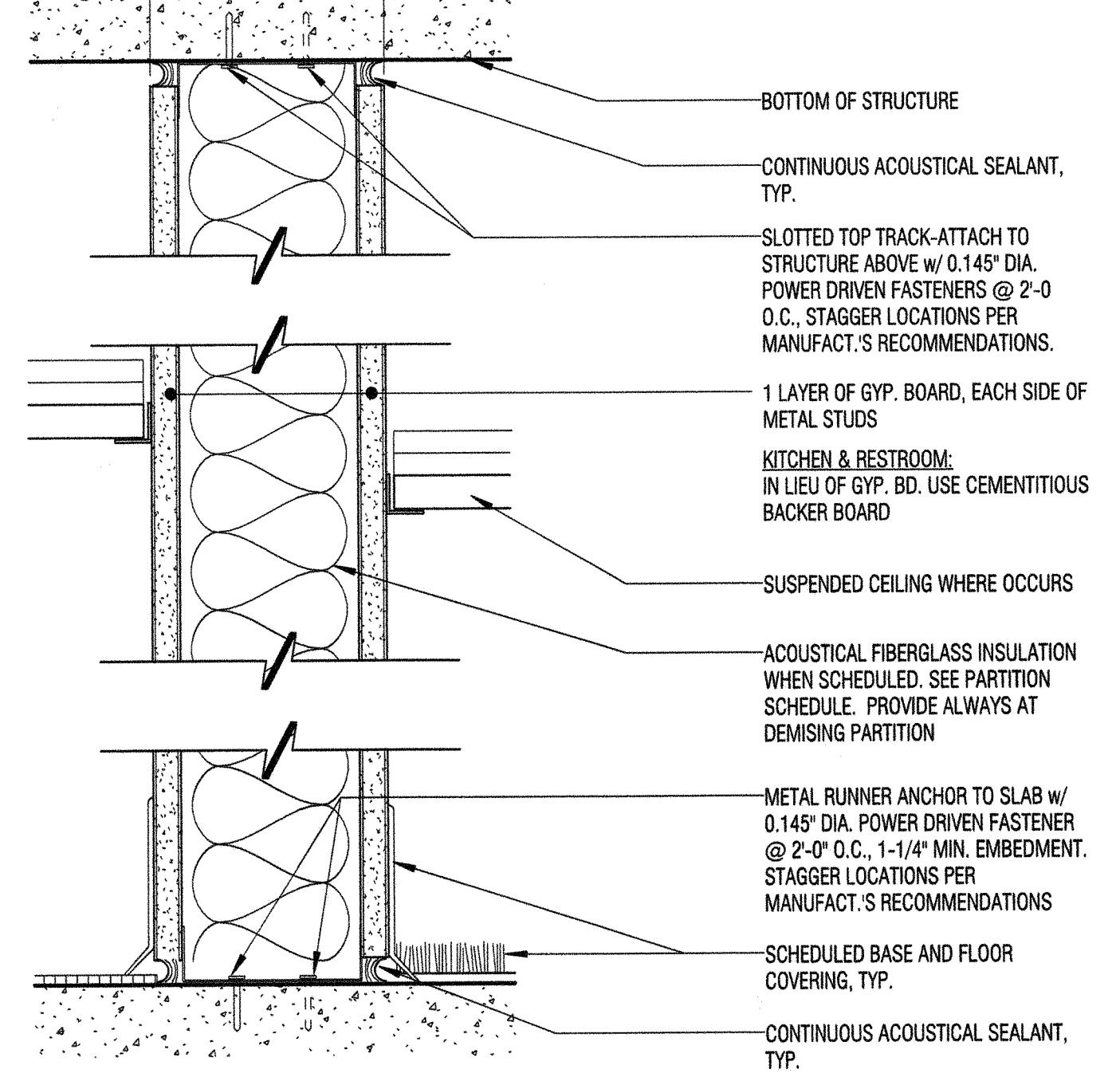
10 HEAD CONNECTION FULL HEIGHT PARTITION TO STRUCTURAL BEAM
3" = 1'-0"



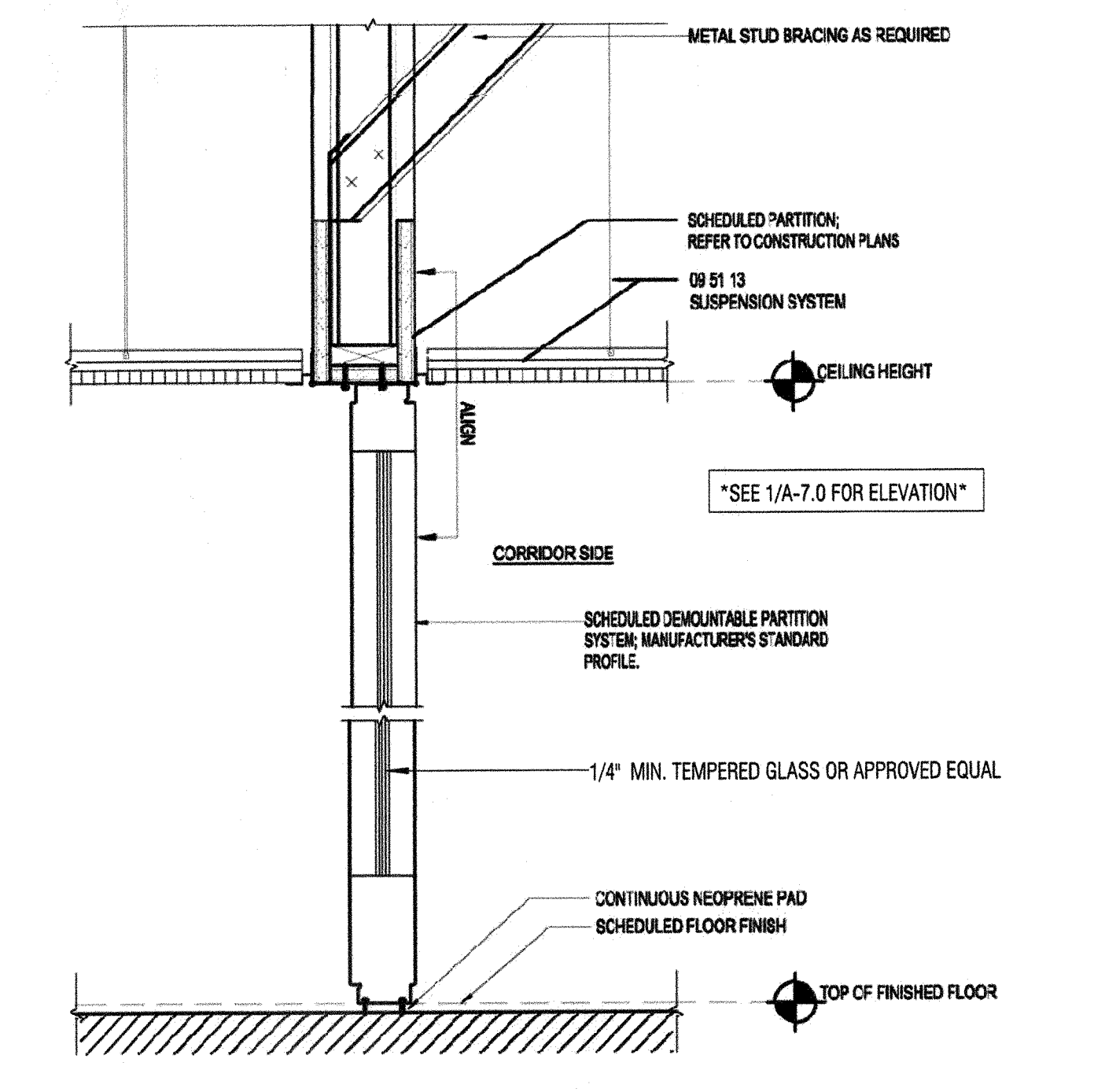
HEAD CONNECTION FULL HEIGHT PARTITION TO STEEL-CONCRETE DECK
3" = 1'-0"



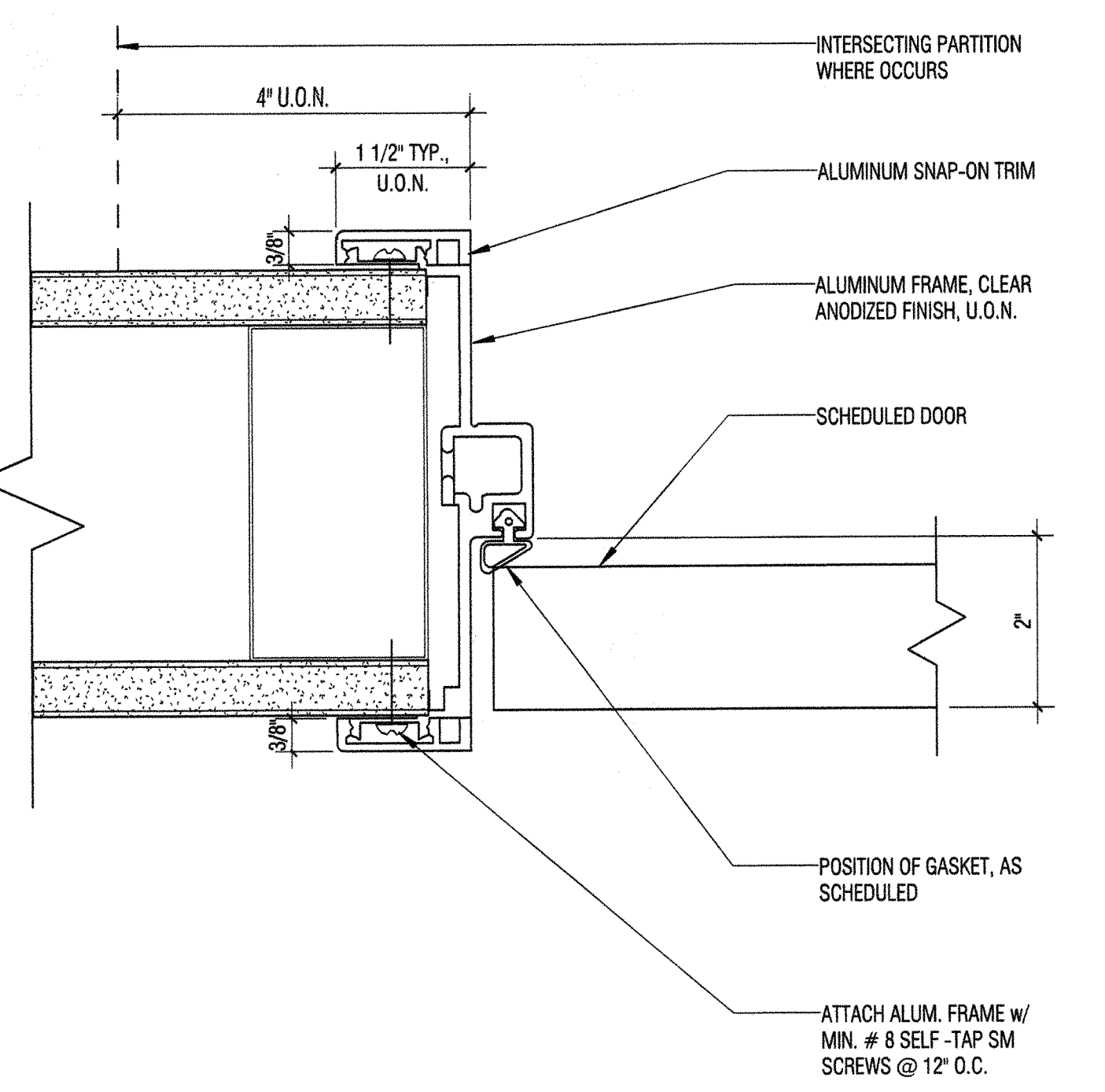
4 PARTIAL HEIGHT PARTITION BRACE CONNECTION @ DECK
3" = 1'-0"



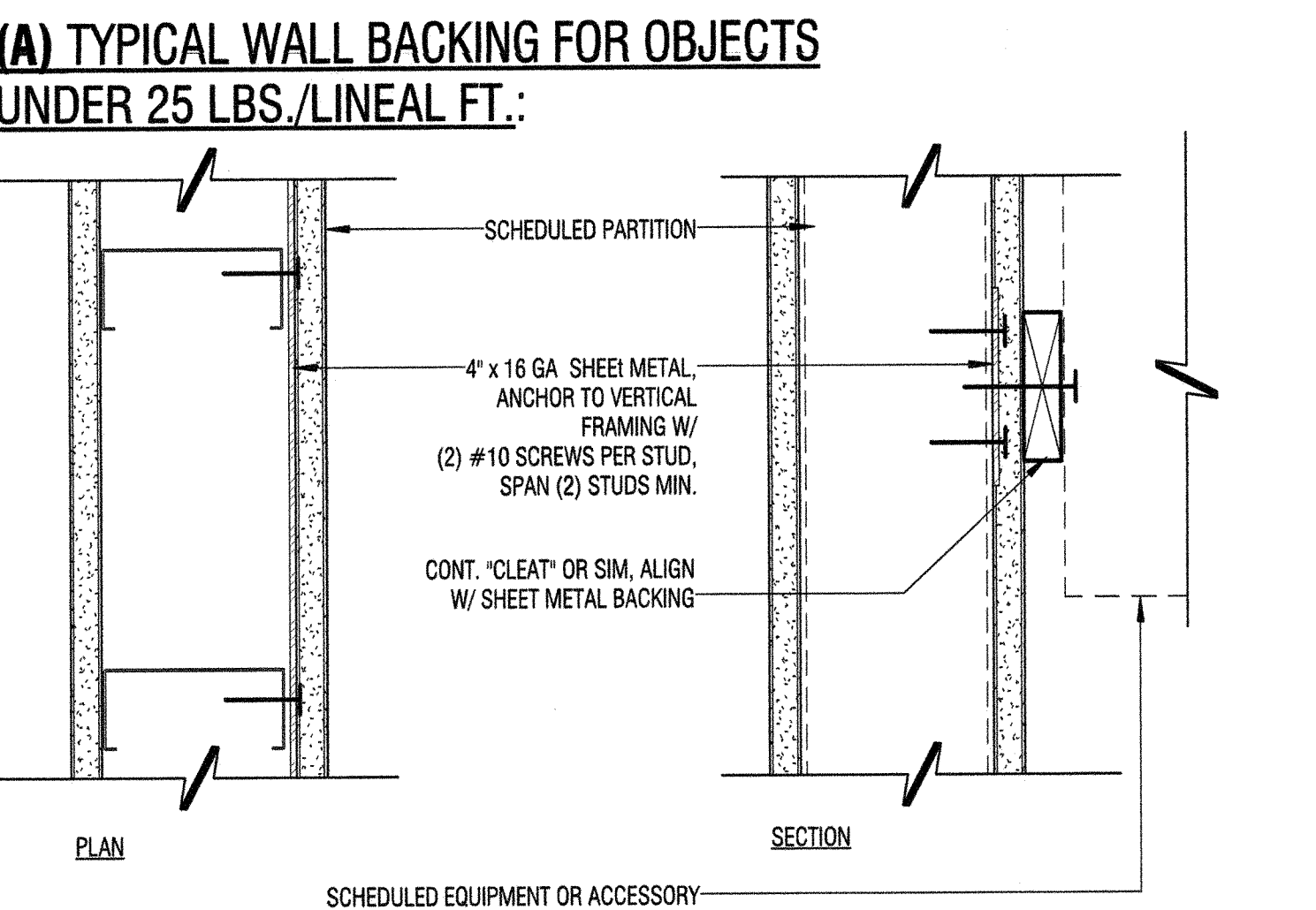
1 TYPE B (B1/ B2/ B3/ B4) - FULL HEIGHT PARTITION/ DEMISING, NON RATED
3" = 1'-0"



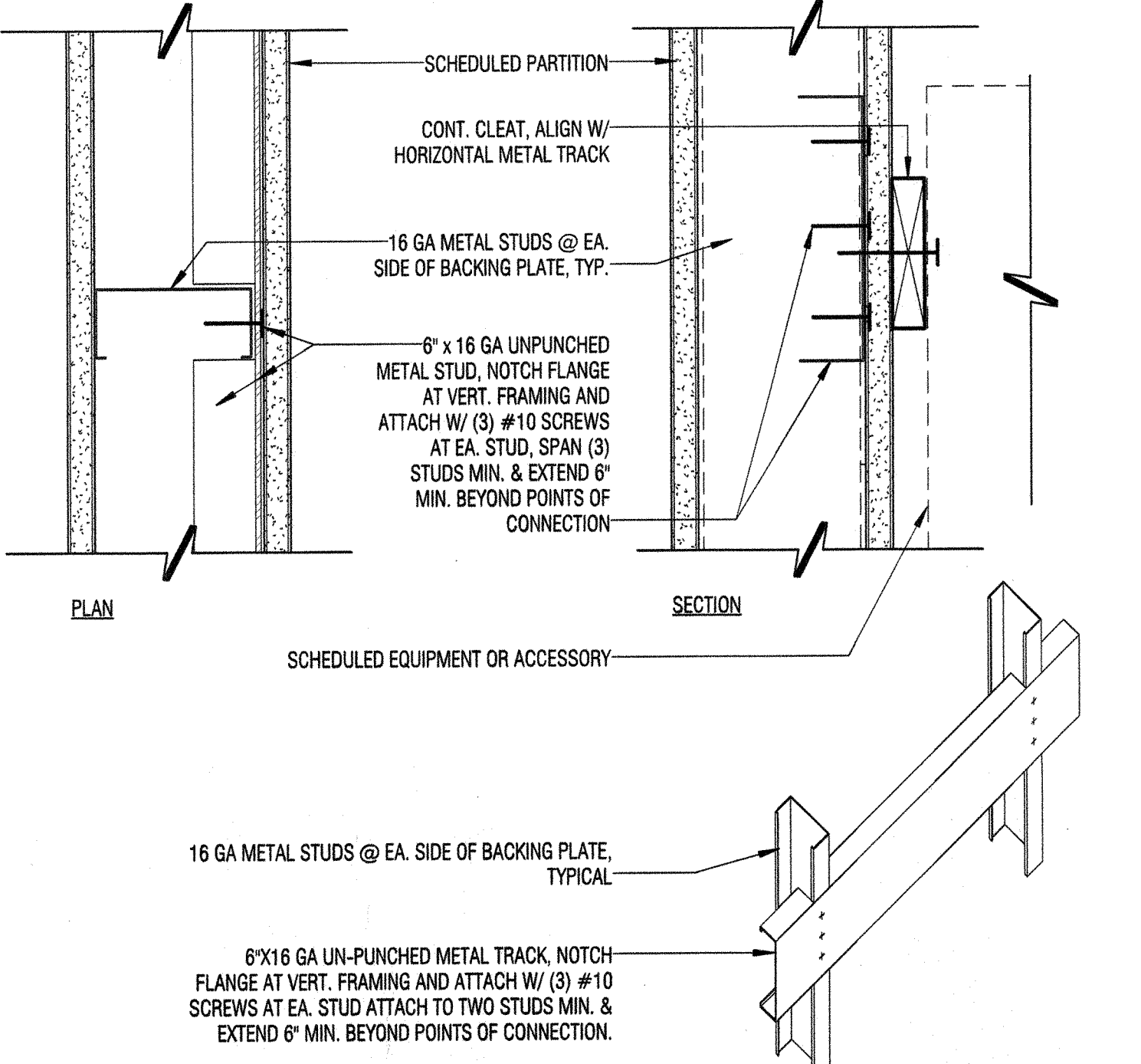
11 DEMOUNTABLE OFFICE FRONT DETAIL
N.T.S.



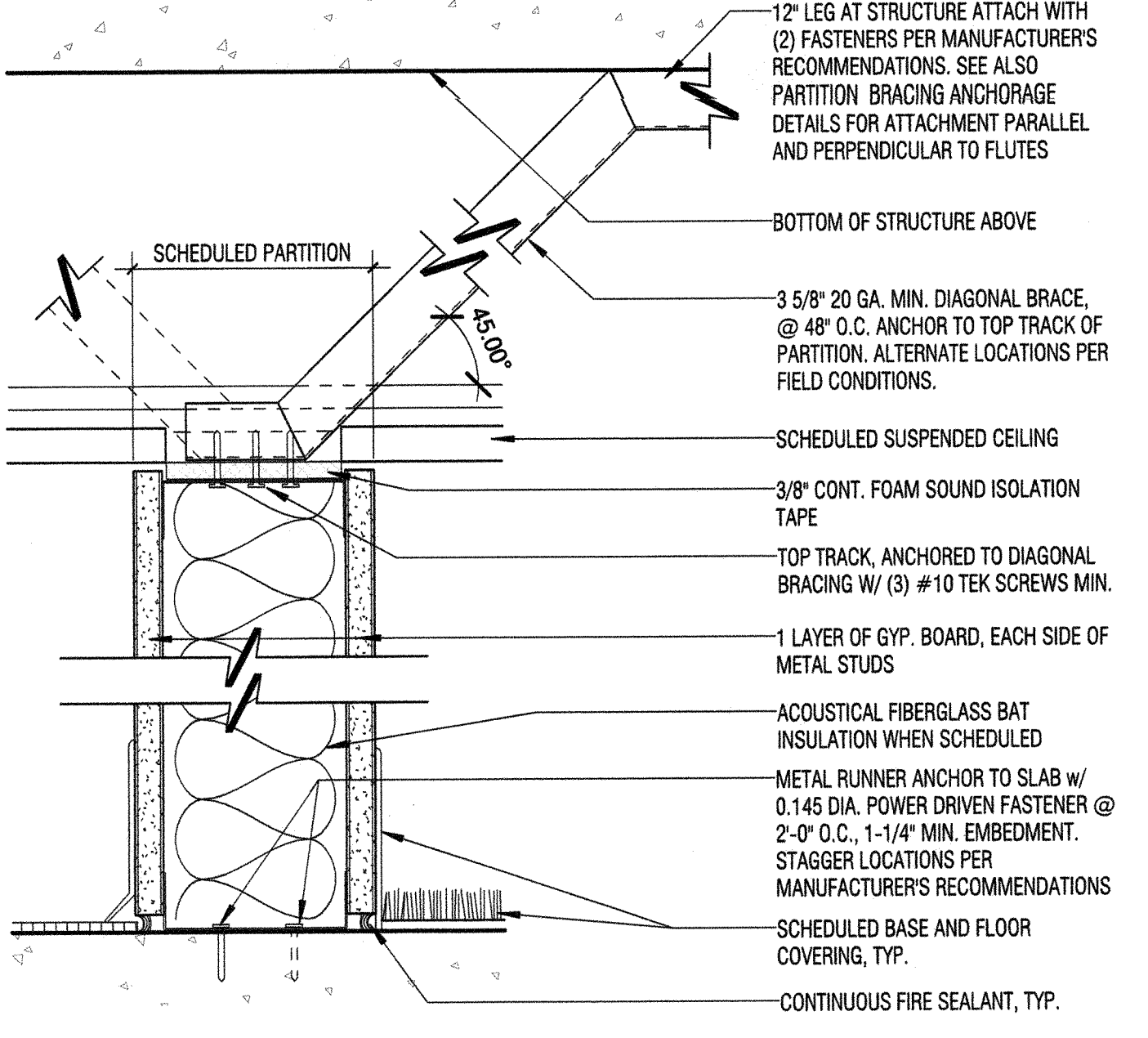
8 DOOR JAMB - ALUMINUM FRAME
6" = 1'-0"



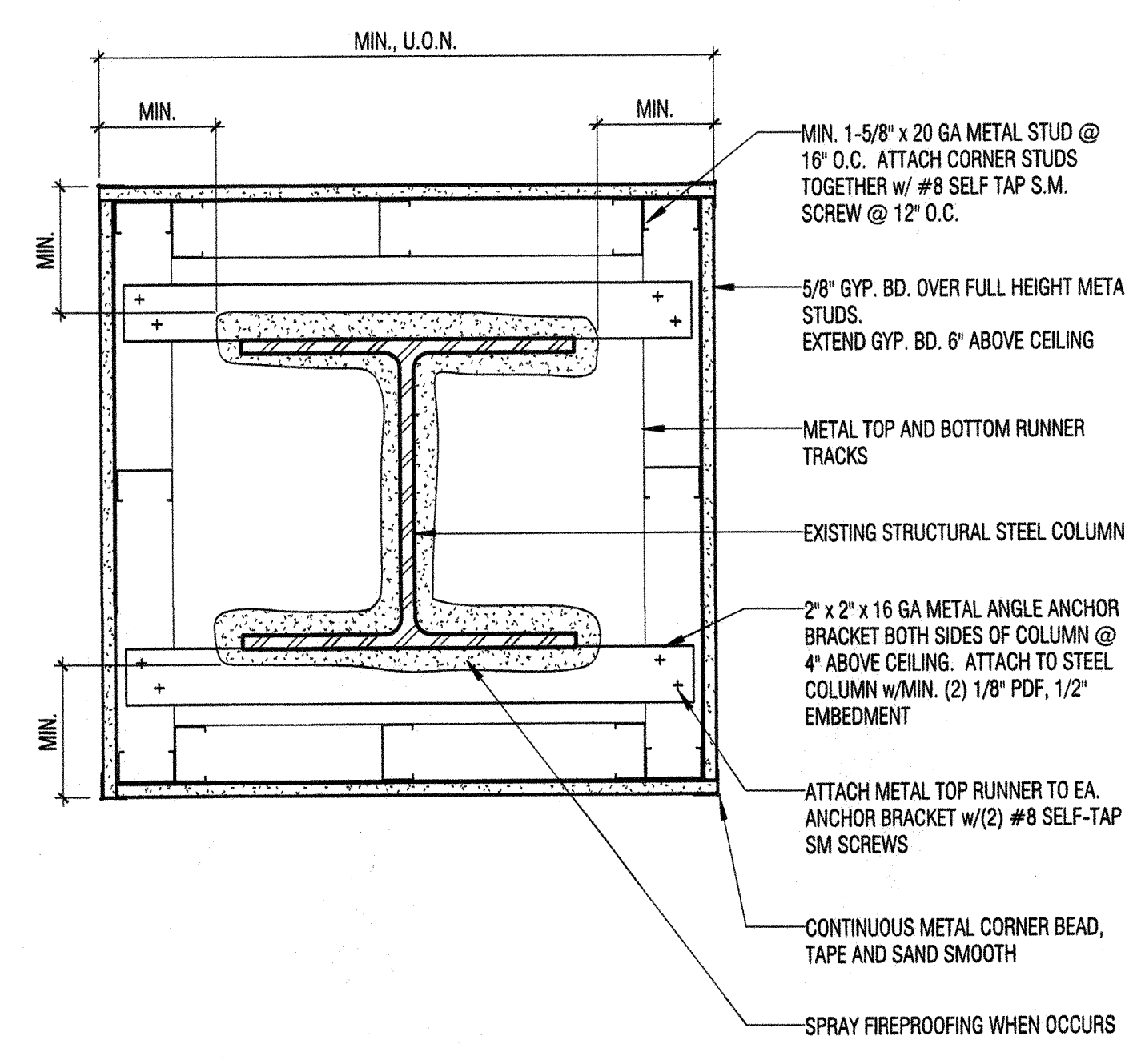
(B) TYPICAL WALL BACKING FOR WALL MOUNTED OBJECTS W/VERTICAL LOAD OF 100 LBS./LINEAL FT. OR 250 LBS POINT LOAD MAXIMUM.



6 TYPICAL BACKING PLATE DETAIL
3" = 1'-0"



2 TYPE D (D1/ D2/ D3/ D4) - CEILING HEIGHT PARTITION AND BRACING
3" = 1'-0"



3 TYPICAL COLUMN FURRING
1 1/2" = 1'-0"



LABOR RELATIONS & HR BUSINESS PARTNERS TENANT IMPROVEMENT

1800 SOLAR DRIVE
OXNARD, CA 93030

Delta	Issue No.	Description	Date
1	ISSUE FOR PLAN CHECK		05-01-2014

IA INTERIOR ARCHITECTS

LOS ANGELES

515 S. FIGUEROA ST., SUITE 2050
LOS ANGELES, CALIFORNIA 90071
TEL 213-623-2164 FAX 213-623-2139

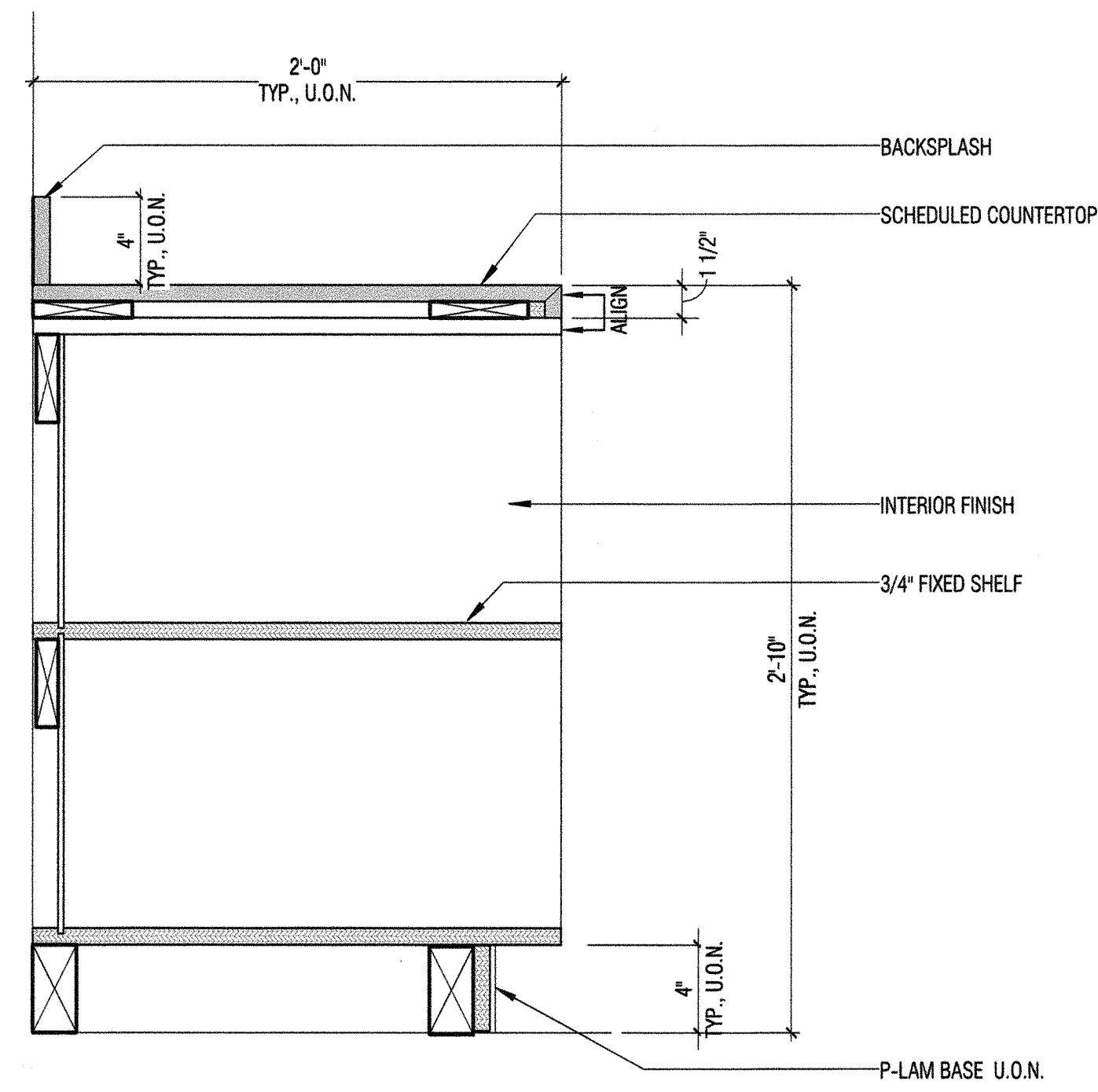
© 2014 INTERIOR ARCHITECTS, INC., A CALIFORNIA CORPORATION. ALL DRAWINGS AND WRITTEN MATERIAL HEREBY CONSTITUTE THE ORIGINAL AND UNPUBLISHED WORK OF THE ARCHITECT. AND THE SAME MAY NOT BE DUPLICATED, USED, OR DISCLOSED WITHOUT THE WRITTEN CONSENT OF THE ARCHITECT.

Drawn: AK Check: FL Owner Approval:

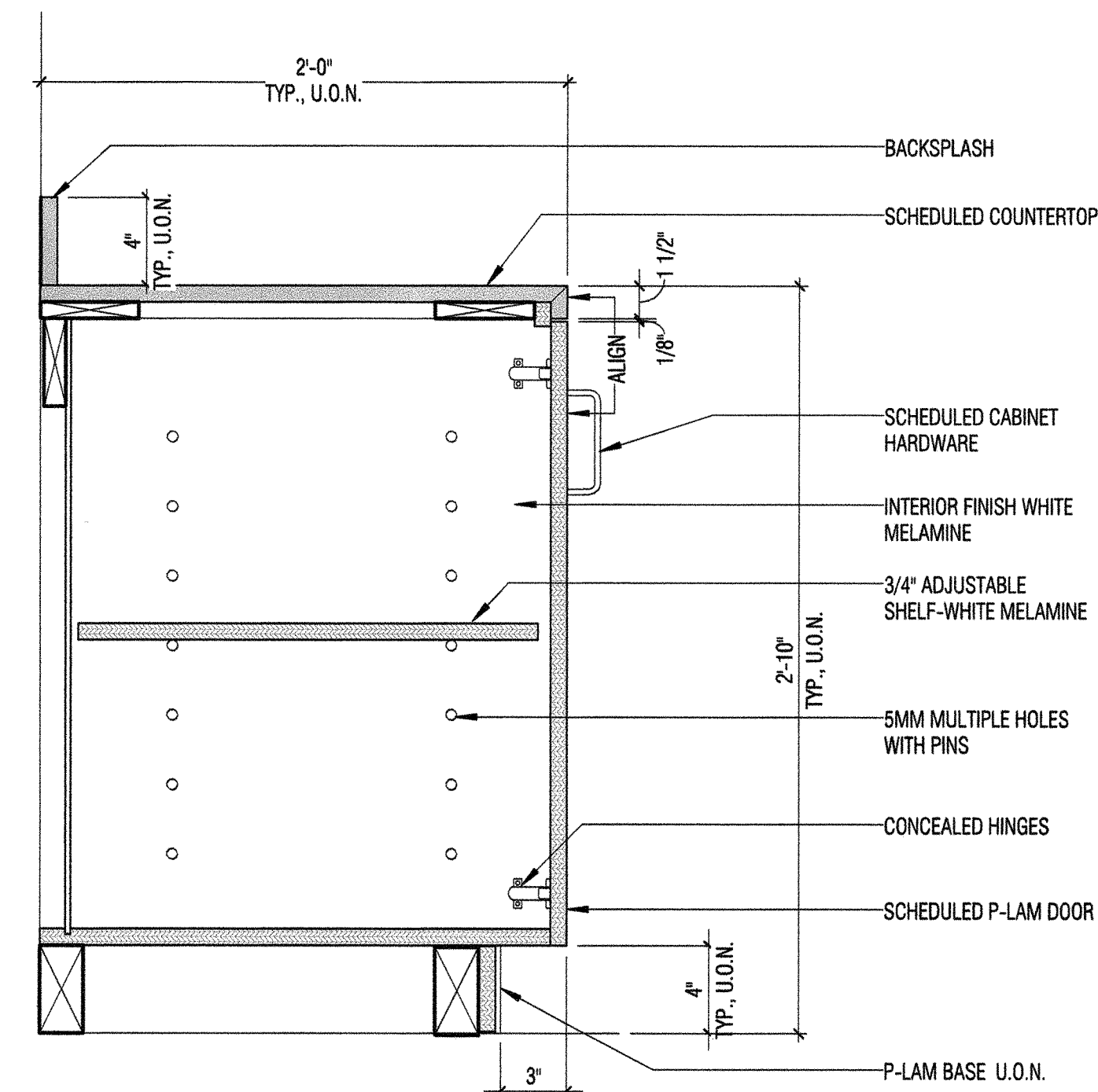
Job No: 014620.00 Scale: As Indicated

TYPICAL DETAILS

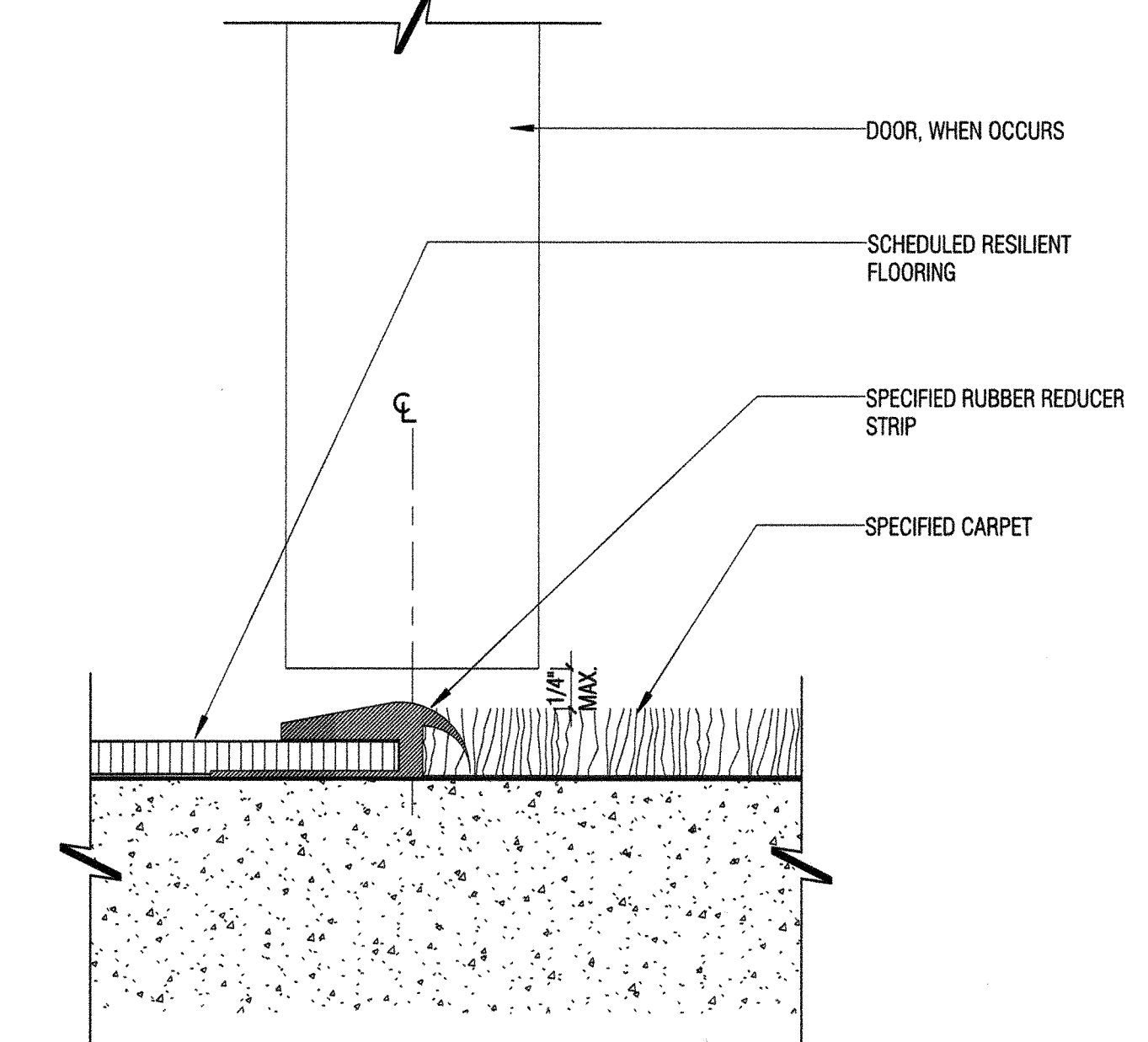
Sheet: **A-8.0**



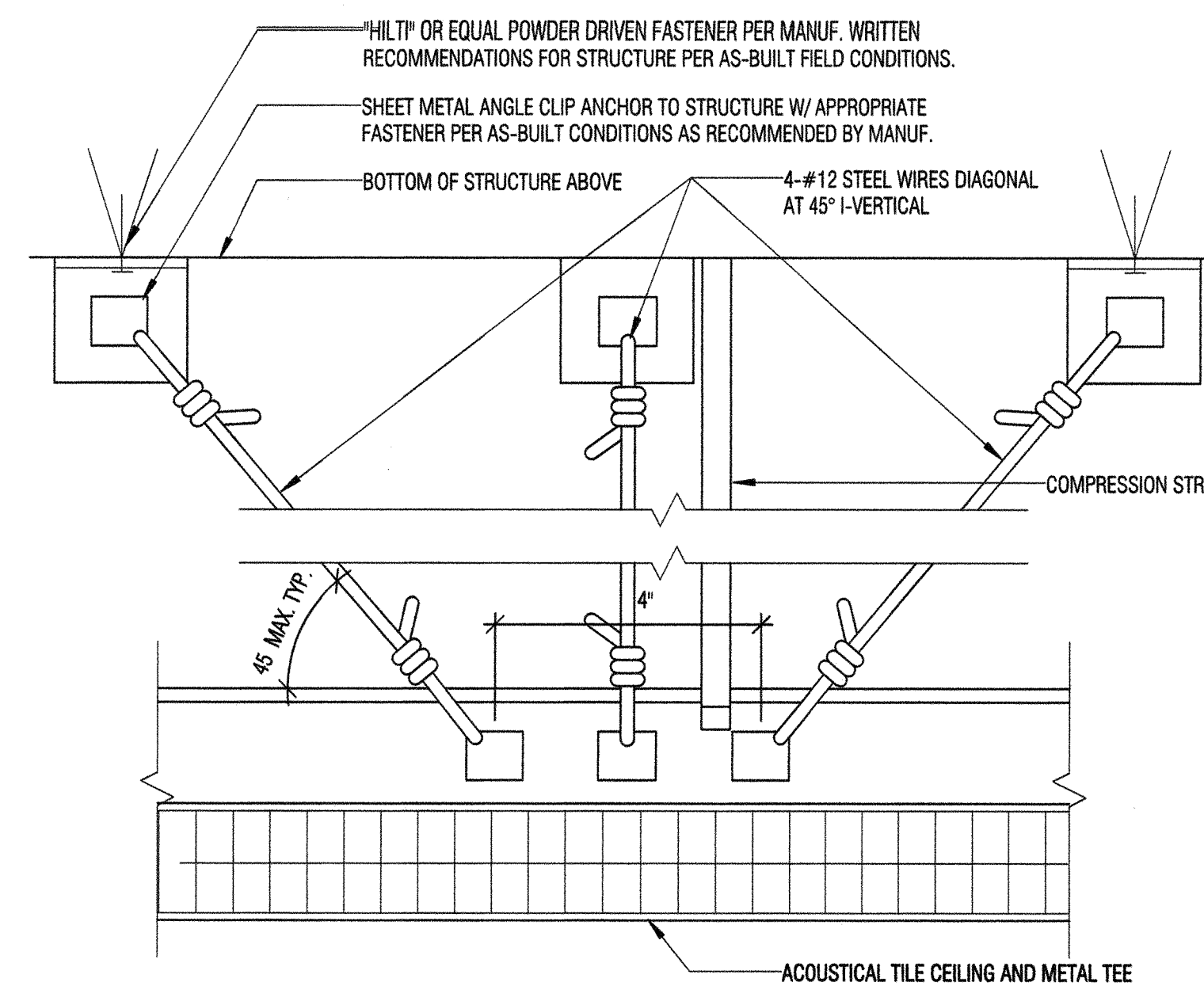
7 BASE CABINET W/OPEN SHELF
1 1/2" = 1'-0"



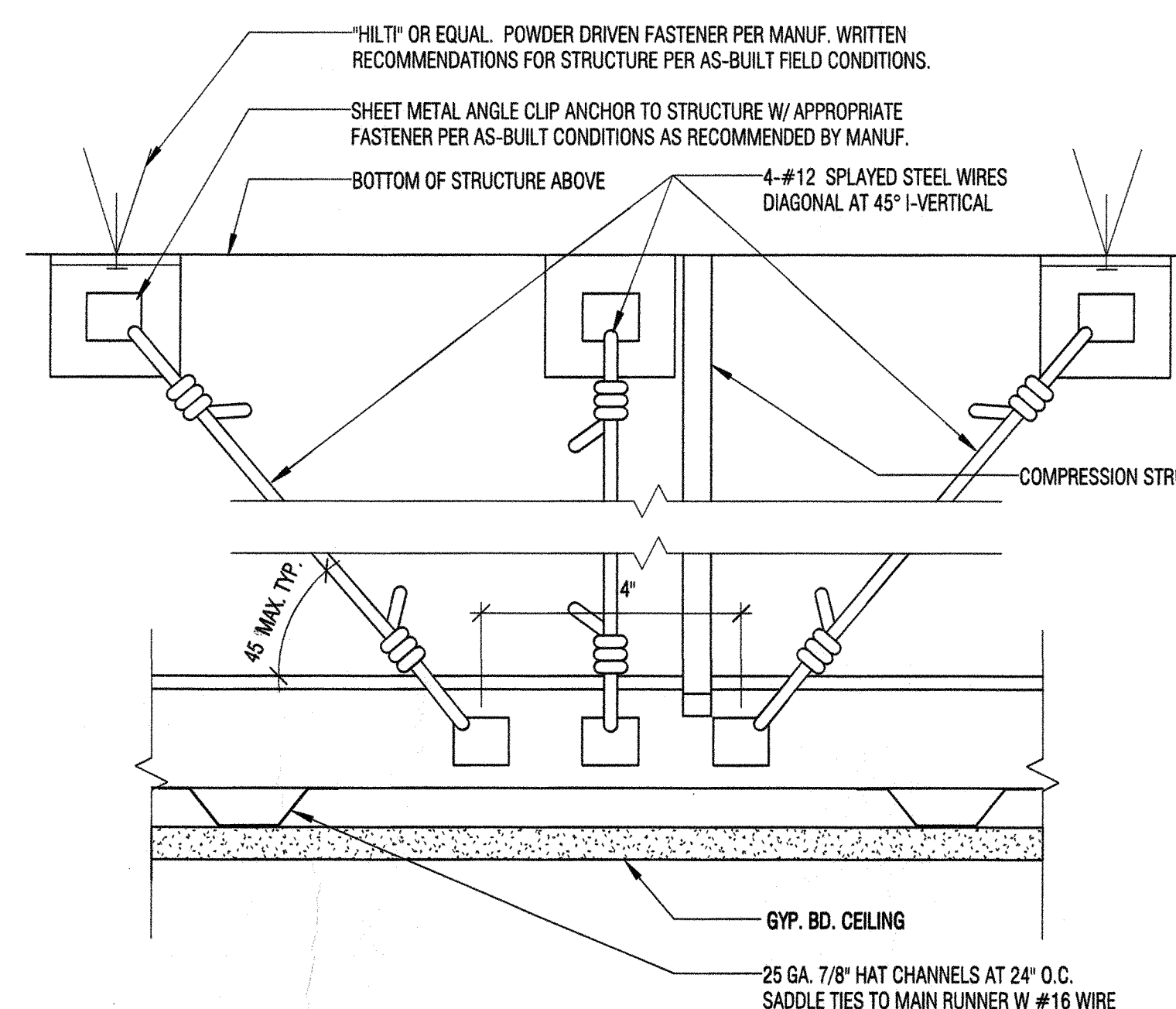
4 BASE CABINET w/ DOORS & ADJUSTABLE SHELF
1 1/2" = 1'-0"



1 CARPET TO RESILIENT FLOOR TRANSITION
12" = 1'-0"

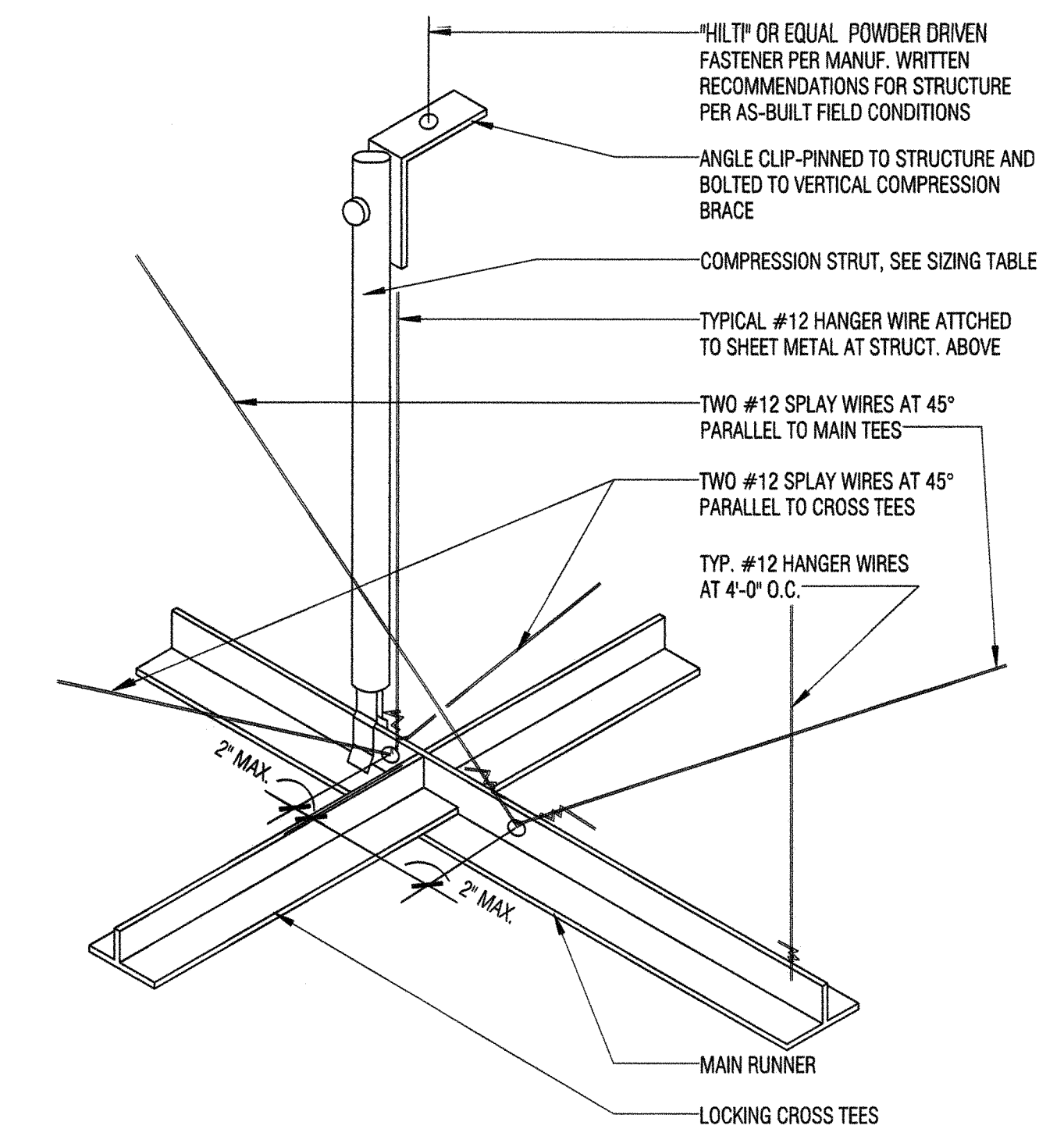


- NOTES:
1. AREA OF CEILING SUPPORTED NOT TO EXCEED 144 SQ. FT.
2. MAXIMUM BRACE SPACING NOT TO EXCEED 12'-0" O.C. EACH WAY, 6'-0" MAX. FROM WALL.
3. BRACE POINT ON MAIN RUNNER NOT TO EXCEED 2 INCH DISTANCE FROM CROSS RUNNER.



- NOTES:
1. AREA OF CEILING SUPPORTED NOT TO EXCEED 144 SQ. FT.
2. MAXIMUM BRACE SPACING NOT TO EXCEED 12'-0" O.C. EACH WAY, 6'-0" MAX. FROM WALL.
3. BRACE POINT ON MAIN RUNNER NOT TO EXCEED 2 INCH DISTANCE FROM CROSS RUNNER.

6 SUSPENDED CEILING WIRE BRACING
1/8" = 1'-0"



SPLAY WIRE BRACING
REF. IBC/ASCE 3-4 PAGE 2, INSTALLATION, ITEM 3.

3. LATERAL FORCE BRACING
WHERE SUBSTANTIATING DESIGN CALCULATIONS ARE NOT PROVIDED, HORIZONTAL RESTRAINTS SHALL BE EFFECTED BY FOUR NO. 12 GAGE WIRES SECURED TO THE MAIN RUNNERS WITHIN 2 INCHES OF THE CROSS RUNNER INTERSECTION AND SPLOYED 90 DEGREES FROM EACH OTHER AT AN ANGLE NOT EXCEEDING 45 DEGREES FROM THE PLANE OF THE CEILING. A STRUT FASTENED TO THE MAIN RUNNER SHALL BE EXTENDED TO AND FASTENED TO THE STRUCTURAL MEMBERS SUPPORTING THE ROOF OR FLOOR ABOVE. THE STRUT SHALL BE ADEQUATE TO RESIST THE VERTICAL COMPONENT INDUCED BY THE BRACING WIRES. THESE HORIZONTAL RESTRAINT POINTS SHALL BE PLACED 12 FEET ON CENTER IN BOTH DIRECTIONS WITH THE FIRST POINT WITHIN 6 FEET FROM EACH WALL. ATTACHMENT OF THE RESTRAINT WIRES TO THE STRUCTURE ABOVE SHALL BE ADEQUATE FOR THE LOAD IMPOSED. LATERAL FORCE BRACING MEMBERS SHALL BE SPACED A MINIMUM OF 6 INCHES FROM ALL HORIZONTAL PIPING OR DUCT WORK THAT IS NOT PROVIDED WITH BRACING RESTRAINTS FOR HORIZONTAL FORCES. BRACING WIRES SHALL BE ATTACHED TO THE GRID AND TO THE STRUCTURE IN SUCH A MANNER THAT THEY CAN SUPPORT A DESIGN LOAD OF NOT LESS THAN 200 POUNDS OR THE ACTUAL DESIGN LOAD, WITH A SAFETY FACTOR OF 2, WHICHEVER IS GREATER.

COMPRESSION STRUT SIZING TABLE

MIN. SIZE OF SMALLEST MEMBER	MAX. VERT. SPAN OF ASSEMBLY
1/2" EMT CONDUIT 0.042" WALL TH.	4'-0"
3/4" EMT CONDUIT 0.049" WALL TH.	5'-0"
1" EMT CONDUIT 0.057" WALL TH.	6'-0"
1 1/4" EMT CONDUIT 0.065" WALL TH.	8'-0"
1 1/2" EMT CONDUIT 0.069" WALL TH.	9'-10"
2" EMT CONDUIT 0.085" WALL TH.	11'-4"
2 1/2" EMT CONDUIT 0.072" WALL TH.	16'-6"
3" EMT CONDUIT 0.072" WALL TH.	20'-2"
4" EMT CONDUIT 0.085" WALL TH.	26'-0"
1-5/8" X 25 GA. STUD	6'-2"
2-1/2" X 25 GA. STUD	10'-6"
3/4" X 1 1/2" X 0.059 CHANNEL	2'-2"
1-1/2" X 9/16" X 0.059 CHANNEL	2'-9"



LABOR RELATIONS & HR BUSINESS PARTNERS TENANT IMPROVEMENT

1800 SOLAR DRIVE
OXNARD, CA 93030

1 ISSUE FOR PLAN CHECK 05-01-2014

Delta Issue Nr. Description Date

IA INTERIOR ARCHITECTS

LOS ANGELES

515 S. FIGUEROA ST., SUITE 2050
LOS ANGELES, CALIFORNIA 90071
TEL 213-623-2164 FAX 213-623-2139

© 2014 INTERIOR ARCHITECTS, INC., A CALIFORNIA CORPORATION. ALL DRAWINGS AND WRITTEN MATERIAL HEREIN CONSTITUTE THE ORIGINAL AND UNPUBLISHED WORK OF THE ARCHITECT, AND THE SAME MAY NOT BE REPRODUCED, USED, OR DISCLOSED WITHOUT THE WRITTEN CONSENT OF THE ARCHITECT.

Drawn: AK Check: FL Owner Approval:

Job No: 014620.00 Scale: As Indicated

Title: TYPICAL DETAILS

Sheet: A-8.1