



9166 4th Street, Suite 100  
 Agoura Hills, California 91301  
 P: 818.298.0057 F: 818.298.0000  
 www.pkaarchitecture.com



1800 N SOLAR DRIVE - 1st & 2nd Floors  
 OXNARD, CALIFORNIA

all drawings and written material appearing herein constitute the original and copyrighted work of the architect and the same may not be duplicated, used or disclosed without the written consent of the architect.

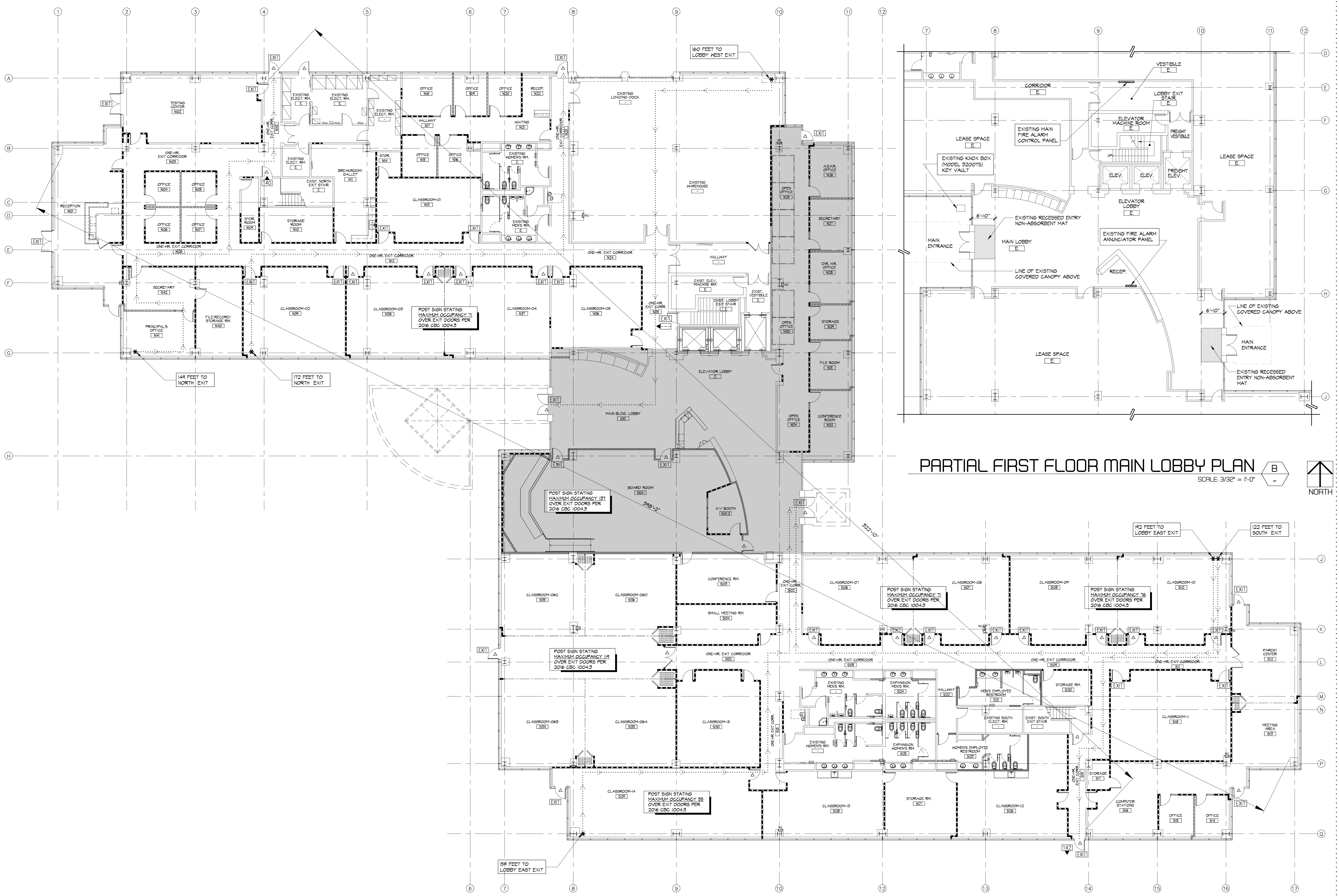
remarks	date
PROGRESS SET	10/14/19
PLAN CHECK SUBMIT.	12/19/19
BID ISSUE	02/24/20

sheet title

FIRST FLOOR  
 EGRESS PLAN

drawn by	
project no	18-66-60
date	
scale	

TA2.2



**PARTIAL FIRST FLOOR MAIN LOBBY PLAN**  
 SCALE: 3/32" = 1'-0"  
 NORTH

**FIRST FLOOR EGRESS PLAN**  
 SCALE: 3/32" = 1'-0"  
 NORTH

**OCCUPANCY LOAD CALCULATION**  
 1ST FLOOR

USE	AREA	OCC. / 100 S.F.	OCCUPANTS
a) OFFICE (B)	16,681 S.F.	1 OCC. / 100 S.F.	= 167 OCCUPANTS
b) CLASSROOMS	15,080 S.F.	1 OCC. / 20 S.F.	= 654 OCCUPANTS
c) BOARD ROOM (A-B)	1,771 S.F.	1 OCC. / 15 S.F.	= 118 OCCUPANTS
d) WAREHOUSE (S-1) & UTILITY ROOMS	4,305 S.F.	1 OCC. / 500 S.F.	= 9 OCCUPANTS
<b>TOTAL</b>			<b>1,065 OCCUPANTS</b>

**OCCUPANT LOAD FACTOR (PER TABLE 1004.1.2)**

OFFICE (B)	100 SQ. FT. PER OCCUPANT
CLASSROOMS	20 SQ. FT. PER OCCUPANT
ASSEMBLY (A-B)	15 SQ. FT. PER OCCUPANT
WAREHOUSE (S-1)	500 SQ. FT. PER OCCUPANT

**NUMBER OF EXITS**  
 1,065 OCC. / 1,000 OCC., THEREFORE 4 EXITS REQUIRED  
 EXITS PROVIDED: 10 TOTAL

PER CBC 2016 TABLE 1006.3, FOR MORE THAN 1,000 OCCUPANTS, MINIMUM NUMBER OF EXITS PER STORY REQUIRED IS 4

**EXIT SEPARATION**  
 REQUIRED: 1/3 MAX. DIAGONAL W/ SPRINKLERS  
 348'-2" = MAX. DIAGONAL  
 152'-5" = 1/3 DIAGONAL W/ SPRINKLERS  
 ##-# = SEPARATION PROVIDED FROM NORTH EXIT STAIR TO LOBBY EXIT STAIR

**EXIT TRAVEL DISTANCE**  
 MAX. EXIT TRAVEL DISTANCE = 251' OCC.  
 OCCUPANCY WITH SPRINKLERS = 300'  
 MAX. TRAVEL DIST. PROVIDED = 251'

- EXITING NOTES:**
- ALLOWABLE EXIT ACCESS TRAVEL DISTANCE FOR BUILDING WITH SPRINKLER SYSTEM (PER 2016 CBC, CHAPTER 10, TABLE 1012.2):  
 "A" - 5'-1" OCCUPANCY - 250 FEET  
 "B" OCCUPANCY - 300 FEET
  - THE EXIT PATH SHALL BE IDENTIFIED BY EXIT SIGNS CONFORMING TO THE REQUIREMENTS OF SECTION 101.2. EXIT SIGNS SHALL BE READILY VISIBLE FROM ANY DIRECTION OF APPROACH. EXIT SIGNS SHALL BE LOCATED AS NECESSARY TO CLEARLY INDICATE THE DIRECTION OF EGRESS TRAVEL. NO POINT SHALL BE MORE THAN 100 FEET FROM THE NEAREST VISIBLE SIGN. (101)
  - EXIT STAIRS ARE TO BE PROVIDED WITH APPROVED STAIRWAY SIGN INDICATING THE FLOOR LEVEL, TERMINUS OF THE TOP AND BOTTOM OF THE STAIR, IT IS TO BE LOCATED APPROXIMATELY 5' FT. ABOVE THE FLOOR LANDING AND READILY VISIBLE WHEN THE STAIR DOORS ARE IN AN OPEN OR CLOSED POSITION. (102.2.4)
- ILLUMINATED EXIT SIGN (DIRECTIONAL, AS SHOWN)  
 EXACT QUANTITIES AND LOCATIONS TO BE CONFIRMED WITH THE FIRE MARSHAL
- ACCUMULATION OF OCCUPANT LOAD TO EACH EXIT
- △ DENOTES DOOR EQUIPPED WITH PANIC DEVICE